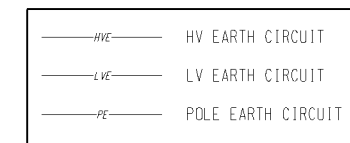
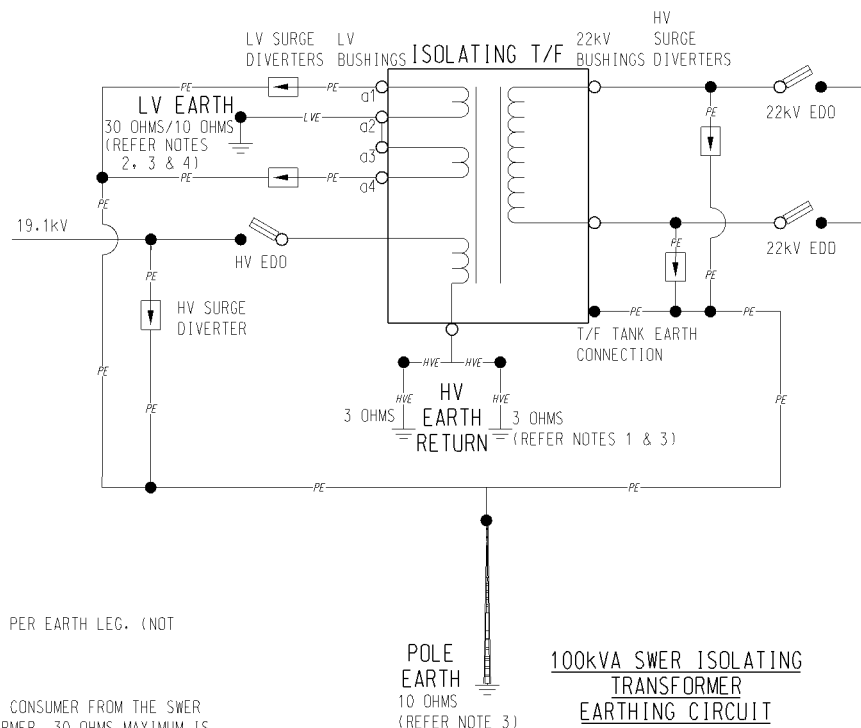


SWER T/F	MAX HV EARTH RESISTANCE/LEG
10 kVA	20 OHMS
20 kVA	10 OHMS
50 kVA	5 OHMS

10, 20, 50kVA SWER DISTRIBUTION TRANSFORMER POLE EARTHING CIRCUIT



LEGEND

NOTES:

- HV EARTHING MAX EARTH RESISTANCE SHOWN PER EARTH LEG. (NOT COMBINED)
- LV EARTHING:-
 - IF LV IS CONNECTED DIRECTLY TO THE CONSUMER FROM THE SWER DISTRIBUTION OR ISOLATING TRANSFORMER, 30 OHMS MAXIMUM IS REQUIRED.
 - IF LV IS CONNECTED TO A CONSUMER VIA AERIAL MAINS FROM THE SWER DISTRIBUTION OR ISOLATING TRANSFORMER, THE NUTRIAL IS REQUIRED TO HAVE 10 OHMS AT ANY POINT ALONG ITS' LENGTH.
- IF THE ABOVE VALUES CANNOT BE ACHIEVED CONTACT THE SENIOR ELECTRICAL ENGINEER. * DO NOT ENERGISE *
- REFER TO TRANSFORMER RATING PLATE FOR ALTERNATIVE LV TAPPING ARRANGEMENTS.
- FOR HV PROTECTION REFER SWER ISOLATING/DISTRIBUTION HV FUSE SELECTION CHARTS S25-3-1-3

NO	DESCRIPTION	DRN	DATE	CKD	APPD
1	APPROVED FOR CONSTRUCTION.	RGI	SEP'99	MWB	FRR
AMENDMENTS					



DES	M. BOCK	POWER STANDARD DRAWING			
DRN	R. INNES	SINGLE WIRE EARTH RETURN EARTHING SCHEM. MAX EARTHING RESISTANCE FOR ISOLATING & DISTRIBUTION TRANSFORMERS			
CKD	S. SAWYER				
APPD	F. ROBSON	SCALE	NO SCALE	A3	DRAWING NUMBER S25-3-1-02
ISSUED	20/10/97	ALL DIM. IN mm			
DRAFTING STANDARD TO A.S.1100		CAD PRODUCT - DO NOT AMMEND MANUALLY		1	