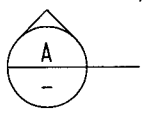
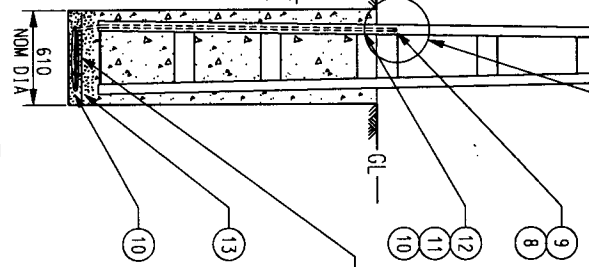


ELEVATION
Scale 1:40



SECTION
Scale 1:40



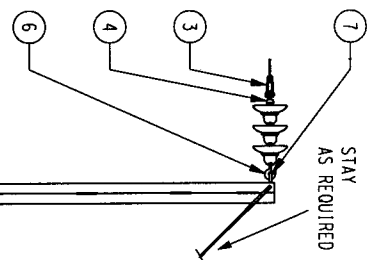
INSTALL DAMP PROOF COURSE OVER COIL. COIL 2m OF Cu 19/2.14 70 sq.mm BARE AND JOIN WITH COMPRESSION CONNECTOR PROFILE 'C' STOCK NO. 255786.

REFER EARTHING ATTACHMENT AS PER STD DRG S1-2-3-2

NOTES:

- ALL CROSSARMS AND BRACKETS FIXED TO THE POLE. USE A 6mm FILLET WELD ALL ROUND WITH E41XX ELECTRODES UNO.
- POLE AND ABS WELD POINTS TO BE GROUND TO CLEAN STEEL PRIOR TO WELDING. WELDS TO BE COLD GALVANISED WITH ZINC RICH PAINT.
- ALL WELDING IS TO COMPLY WITH AS 1554.
- FOR POLE LOADINGS REFER VOLUME 1 DESIGN DATA.

REFER DRG S25-2-3-2



13	1	DAMP PROOF MEMBRANE		NEW
12	1	HALF SADDLE 20mm		81711
11	1	CONDUIT FEXILBLE 20mm		3996
10	1	Cu CONDUCTOR, 19/2.14, 70sqmm	S1-1-5-5	9803
9	1	LUG COPPER COMPRESSION 70sqmm 19/2.14	S1-2-3-11	5512
8	1	M12 BOLT, WASHER AND NUT		114462
7	1	D HOOK (welded to pole)	S1-1-4-5	9159
6	1	BALL HOOK	S1-1-4-2	3111
5	1	DISC INSULATOR ASSEMBLY	S1-2-1-5	
4	1	SOCKET TONGUE	S1-1-4-3	3087
3	1	ALUMINIUM ANGLE CLAMP	S25-2-3-2	
2	-	CONDUCTOR 3/2.75 SC/AC OR 3/4/2.50ACSR/GZ		8740/1610
1	1	13.5B POLE, 13.5m LONG	S1-1-1-2	11114
TAG NO	QTY	DESCRIPTION	DRG REF	STOCK CODE

MATERIALS

POWER STANDARD DRAWING

SINGLE WIRE EARTH RETURN
DEVIATION POLE
13.5B ARRANGEMENT

DES M. BOCK
DRN R. INNES
CKD S. SAWYER
APPD F. ROBSON
SCALE 1:40
ISSUED 23/10/97

A3

DRAWING NUMBER

S25-1-1-06

DRAFTING STANDARD TO A.S.1100

CAD PRODUCT - DO NOT AMMEND MANUALLY



2 ITEM 9 Q/LUG CHANGED TO COMPRESSION.
1 APPROVED FOR CONSTRUCTION.

K.I. FEB'05 C.C. C.C.
RGI SEP'99 MWB FRR



NO	DESCRIPTION	DRN	DATE	CKD	APPD
AMENDMENTS					