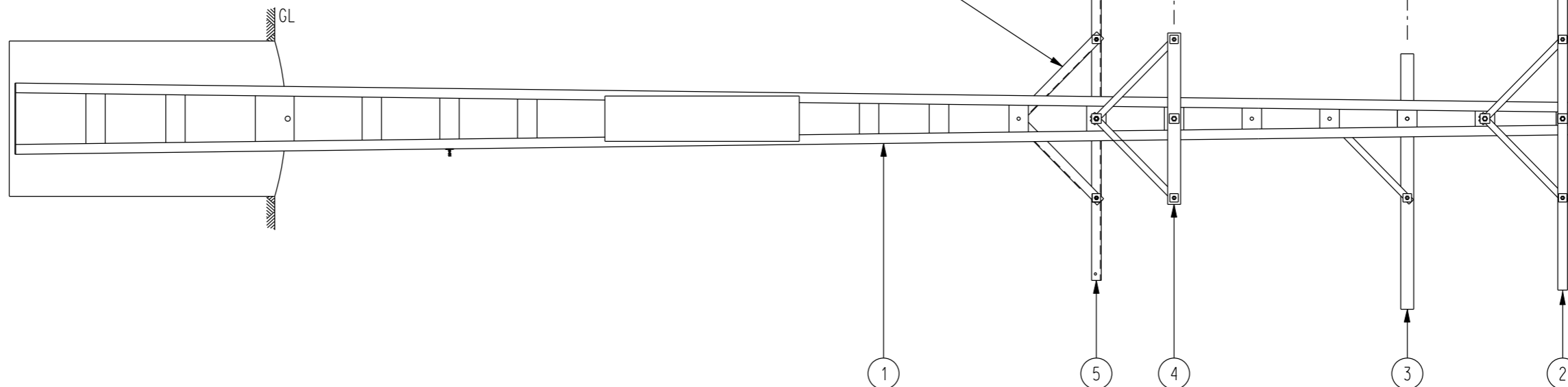
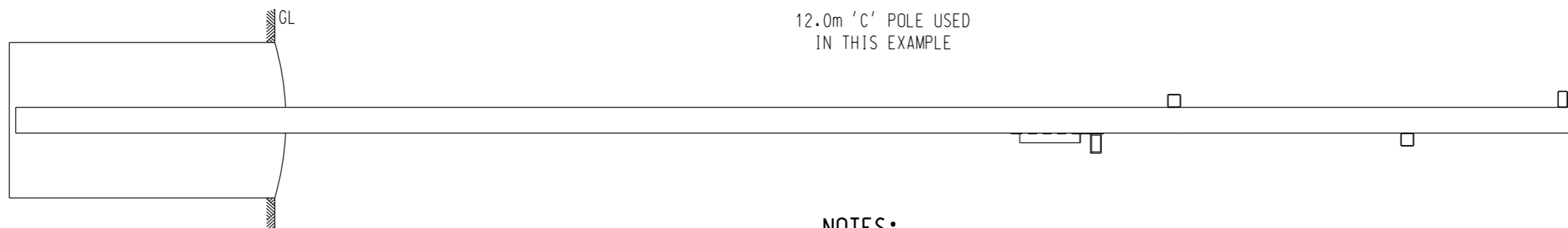


ELEVATION  
SCALE 1:40



END ELEVATION  
SCALE 1:40



12.0m 'C' POLE USED  
IN THIS EXAMPLE

**NOTES:**

1. ALL BOLTED CONNECTIONS TO USE GALVANISED MILD STEEL BOLTS, SPRING WASHERS, LARGE FLAT WASHERS AND GALVANISED NUTS.
2. GREASE TO BE USED ON ALL BOLTED CONNECTIONS.

| TAG No. | QTY. | DESCRIPTION                                              | STOCK CODE | DRG. REF.  |
|---------|------|----------------------------------------------------------|------------|------------|
| 5       | 1    | CROSSARM, TRANSF. & LV - ABC TERM. & FUSE SWITCH BRACKET | 406823     | S04-1-2-19 |
| 4       | 1    | CROSSARM, TRANSFORMER MOUNTING, & M24 BOLT 400 LONG      | 298596     | S01-1-2-12 |
| 3       | 1    | CROSSARM, HV EDO MOUNTING, & M24 BOLT 180 LONG           | 298547     | S01-1-2-10 |
| 2       | 1    | CROSSARM HV, & M24 BOLT 210 LONG                         | -          | S01-1-2-10 |
| 1       | 1    | LINE POLE, UNIVERSAL POLE                                | -          | S01-1-1-XX |

MATERIAL SCHEDULE

| NO | DESCRIPTION                                         | DRN  | DATE    | CKD  | APPD   |
|----|-----------------------------------------------------|------|---------|------|--------|
| 2  | CROSSARM REMOVED TO S04-1-2-19. TRANSFORMER LOWERED | A.T. | DEC'12  | B.C. | B.C.   |
| 1  | LOCATION OFF ITEMS 3 & 4 AMENDED                    | A.S. | 28.8.06 | R.S. | S.C.   |
| 0  | ISSUED FOR CONSTRUCTION                             | A.S. | 10.4.02 | M.B. | F.R.R. |



|                               |           |                                      |                           |
|-------------------------------|-----------|--------------------------------------|---------------------------|
| DES                           | M. BOCK   | POWER STANDARD DRAWING               |                           |
| DRN                           | R. INNESS | POLE STRUCTURES - BOLTED CONNECTIONS |                           |
| CKD                           | M. BOCK   | SUBSTATION - LV ABC                  |                           |
| APPD                          | F. ROBSON | SINGLE POLE                          |                           |
| SCALE                         | 1 : 40    | A3                                   | DRAWING NUMBER S04-2-5-02 |
| ISSUED                        | JULY'00   |                                      |                           |
| ALL DIM.                      | IN mm     | CAD PRODUCT - DO NOT AMEND MANUALLY  |                           |
| DRAFTING STANDARD TO A.S.1100 |           | AMDT                                 |                           |