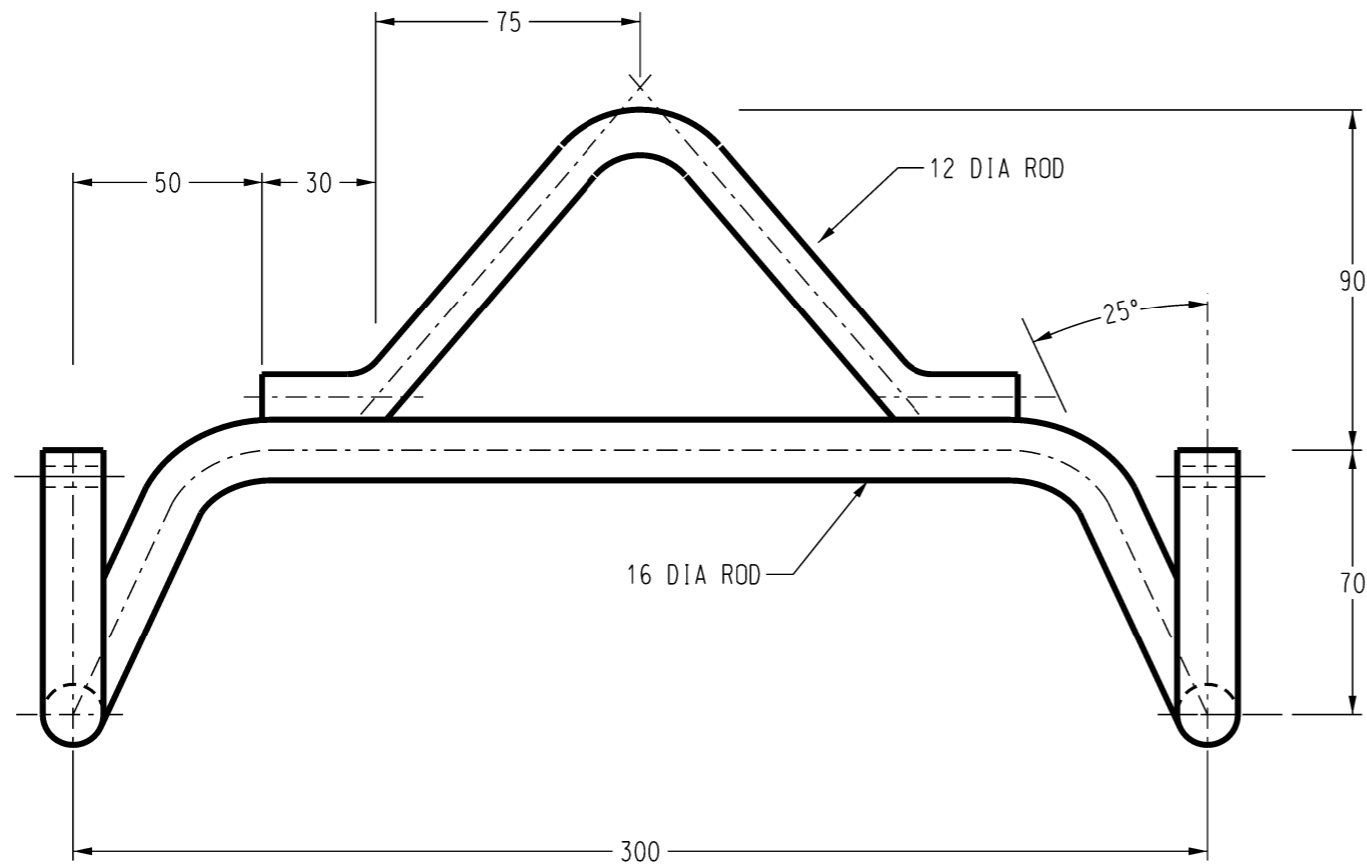
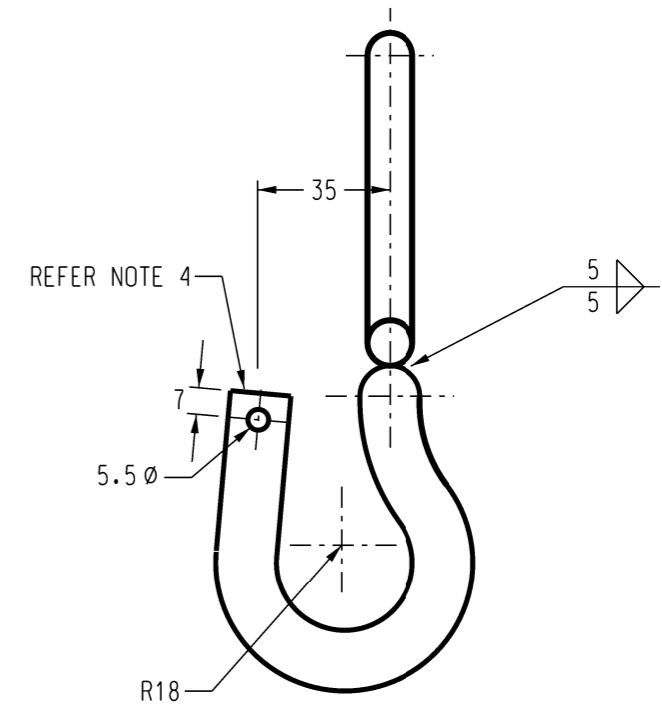


3RD ANGLE -DO NOT SCALE - REPORT ANY ERRORS, OMISSIONS TO DRAFTING OFFICE



ELEVATION

ITEM 1 - YOKE
STOCK CODE 218222



SIDE VIEW

NOTES :

1. ALL WORKMANSHIP AND MATERIALS SHALL BE IN ACCORDANCE WITH AS 3678.
2. ALL ROUGH OR BURRED EDGES ARE TO BE DRESSED CLEAN.
3. CORROSION PROTECTION TO BE HOT DIPPED GALVANIZING, WHEREBY COMPONENTS ARE TO BE EVEN AND FREE OF LUMPS AND BUILD-UP AND TRUE TO SHAPE AFTER GALVANIZING. COMPONENTS ARE TO BE TESTED IN ACCORDANCE WITH AS 1650.
4. YORK HOOKS ARE TO BE CONSTRUCTED SUCH THAT THE CLOSING PLATE (STOCK CODE 213876) ON DRG. No. S4-1-2-7 CAN BE FITTED FOR NON-BREAKAWAY USAGE.

| NO | DESCRIPTION | DRN | DATE | CKD | APPD |
|------------|----------------|------|--------|------|------|
| 1 | REDRAWN IN CAD | A.D. | MAY'98 | R.I. | F.R. |
| AMENDMENTS | | | | | |



| | | | | |
|-------------------------------|----------|---------------------------------------------------------------------------------|-------------------------------------|------------|
| DES | gmck | POWER STANDARD DRAWING | | |
| DRN | A.DAVIS | LINE HARDWARE LV - ABC YOKE FOR ANGLES 26-50 DEGREES | | |
| CKD | R.INNES | | | |
| APPD | F.ROBSON | | | |
| SCALE | 1:2 | | | |
| ISSUED | MAY'98 | A3 | DRAWING NUMBER | S04-1-2-08 |
| ALL DIM. | IN mm | | | 1 |
| DRAFTING STANDARD TO A.S.1100 | | | CAD PRODUCT - DO NOT AMEND MANUALLY | |

