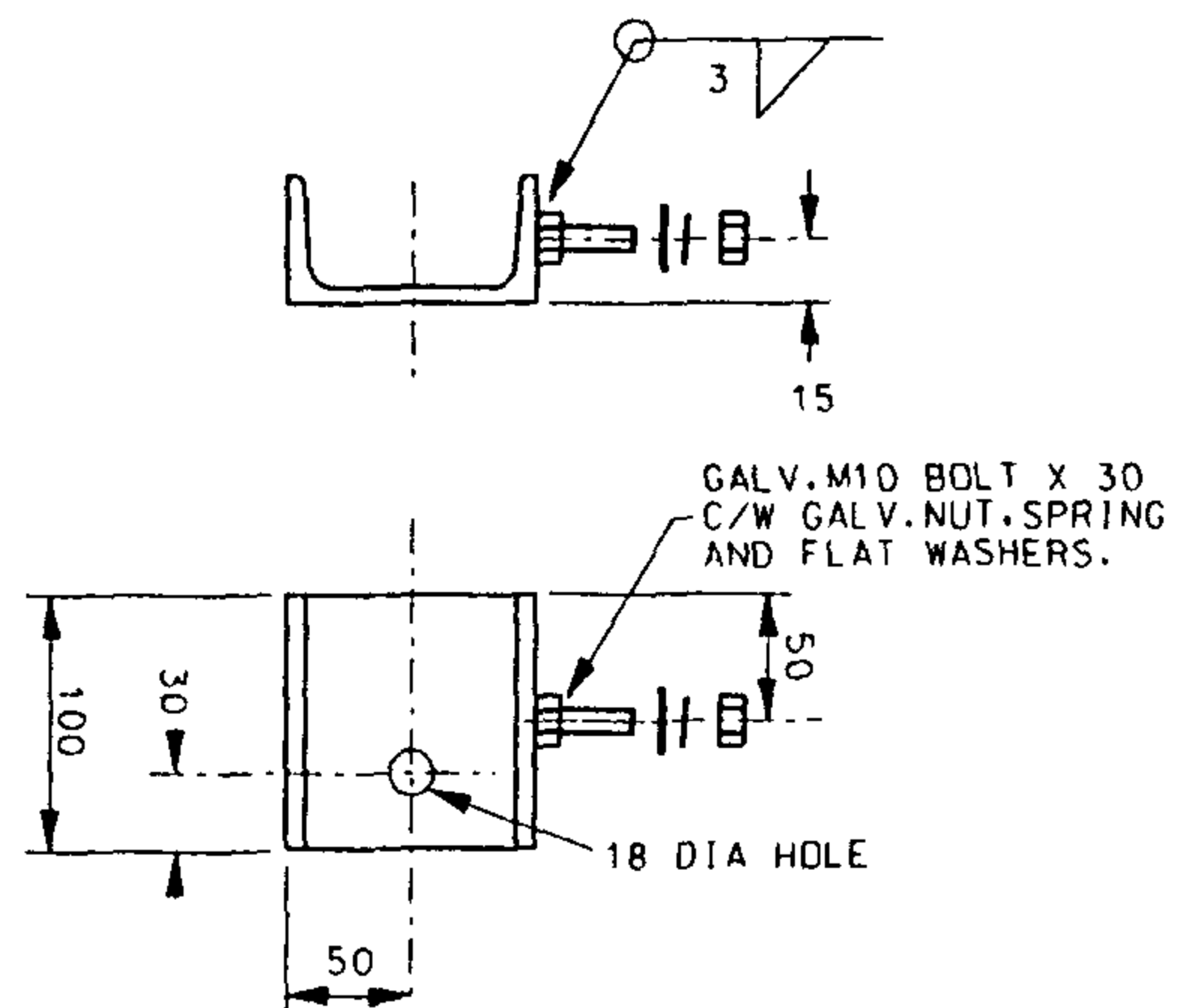
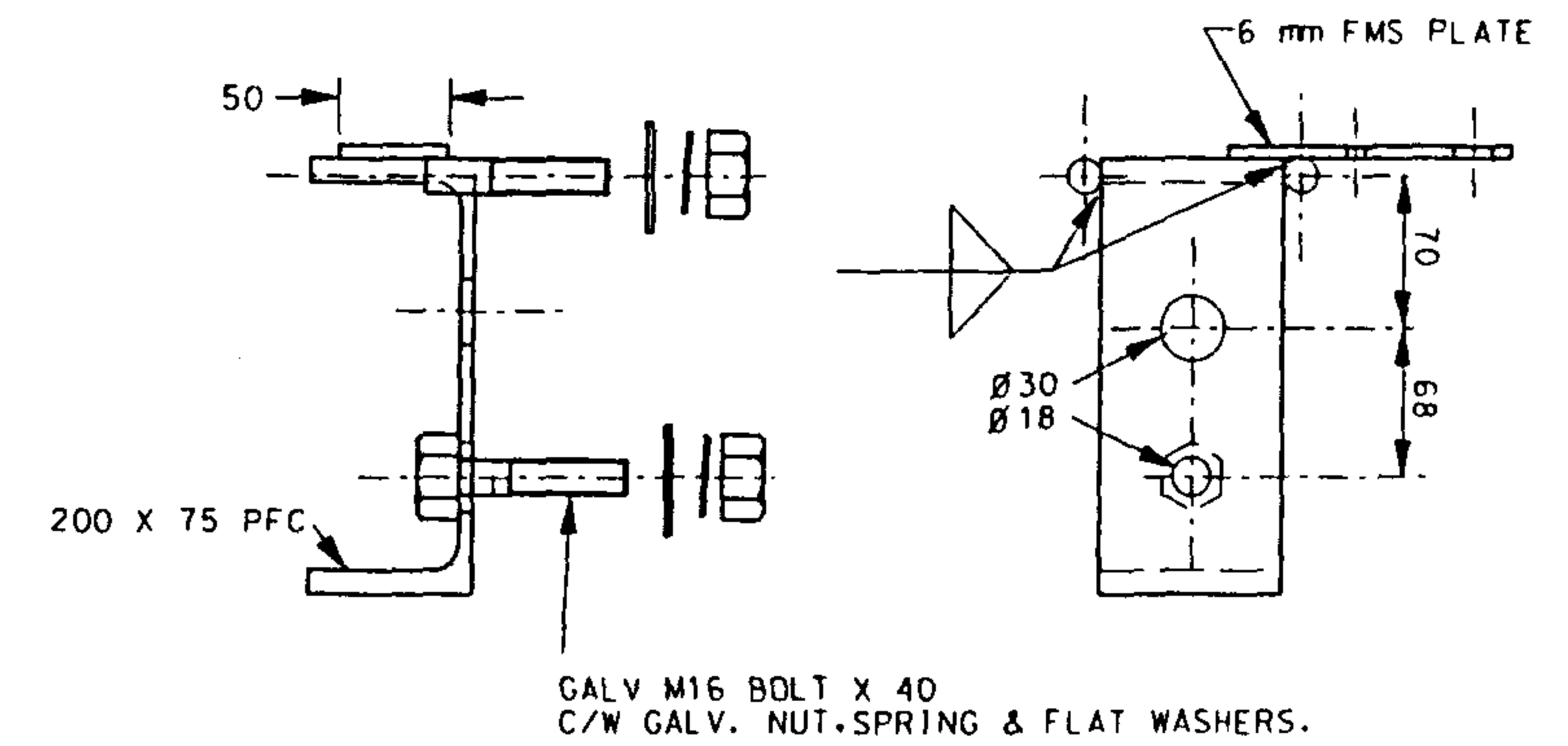
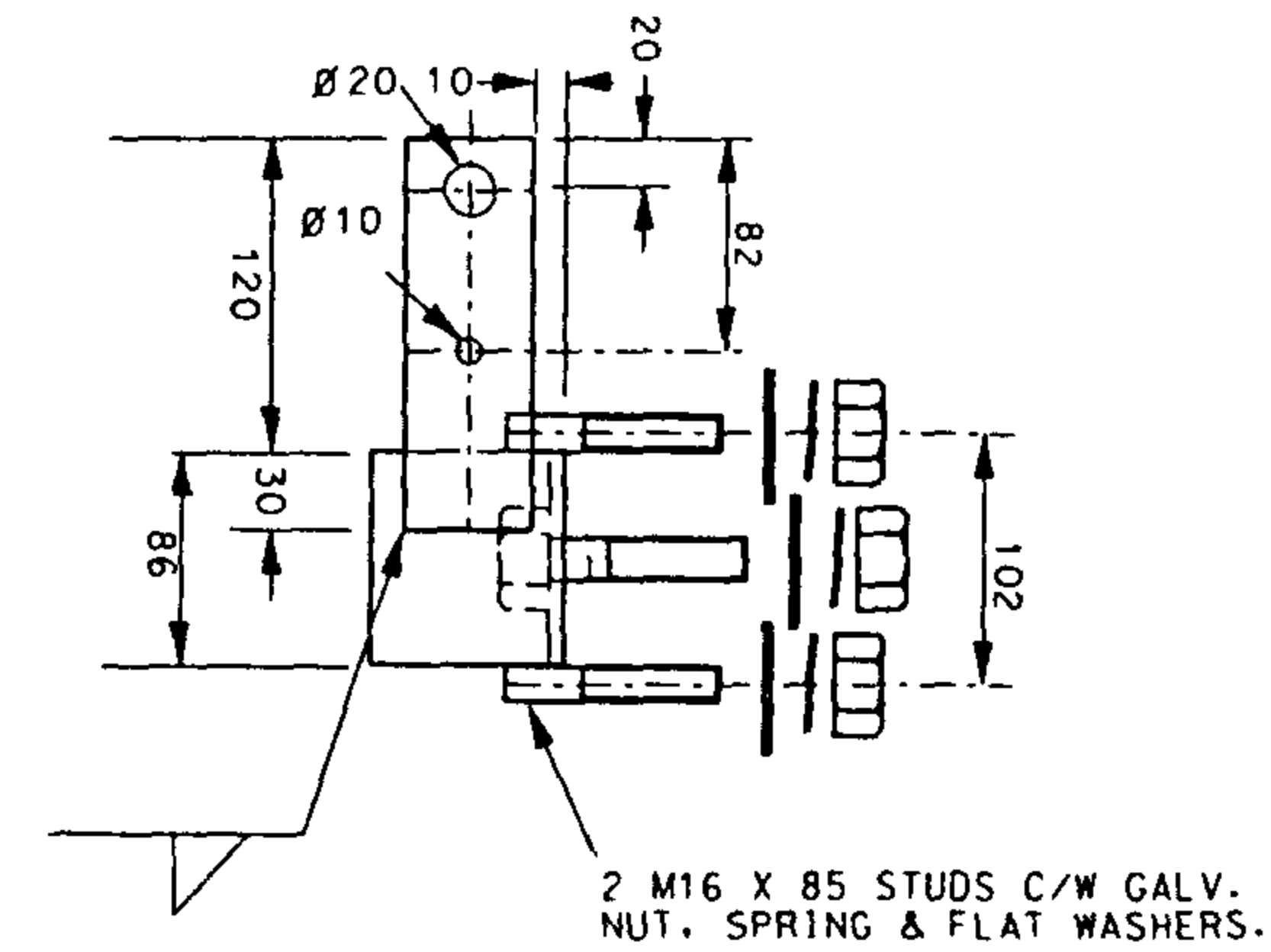


ITEM 1 - BRACKET-DOUBLE CLAMP MOUNTING
(STOCK CODE 203653)



ITEM 3 - BRACKET HOOK MOUNTING
(STOCK CODE 203679)



ITEM 2 - BRACKET OUTREACH MOUNTING
(STOCK CODE 203661)

NOTES

1. ALL WORKMANSHIP AND MATERIALS TO BE IN ACCORDANCE WITH AS 3678 & 3679.
2. ALL WELDING AND WELD PREPARATION TO BE IN ACCORDANCE WITH AS 1554. UNLESS INDICATED OTHERWISE, FILLET WELDS TO BE 6 mm U.N.O.
3. ALL ROUGH OR BURRED EDGES ARE TO BE DRESSED CLEAN.
4. BOLTS TO BE ISO METRIC AND PROPERTY CLASS 4.6 IN ACCORDANCE WITH AS 1111).
5. NUTS AND WASHERS TO BE IN ACCORDANCE WITH AS 1112 & AS 1237 RESPECTIVELY.
6. AFTER COMPLETION OF WELDING, ALL ITEMS ARE TO BE HOT DIP GALVANISED TO AS 1650.

1	ITEM 2 MODIFIED TO ALLOW ATTACHMENT OF FUSE ASSEMBLY. NOTES MODIFIED.	J.A.L.	S.C.M.P.	J.D.	APR '95	<p>POWER AND WATER AUTHORITY</p>	DES	D.S.	N.T. STANDARD DRAWING			
							DRN	g.mck				LINE HARDWARE
No.	AMENDMENT	DRN	CKD	APPD	DATE	NORTHERN TERRITORY	CKD	G. SCHUBERT	LV - ABC	DRAWING NUMBER	S4-1-2-2	AMDT
							APPD	B. T. KENT	BRACKET			
							SCALE	1 : 5	DOUBLE CLAMP, OUTREACH & HOOK MOUNTING			
							ISSUED	SEPT '89				
							ALL DIM. IN	mm				
							DRAFTING STANDARD TO	AS 1100	CAD PRODUCT - DO NOT AMEND MANUALLY			