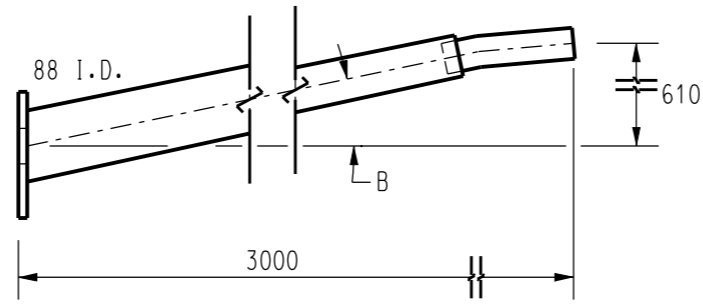
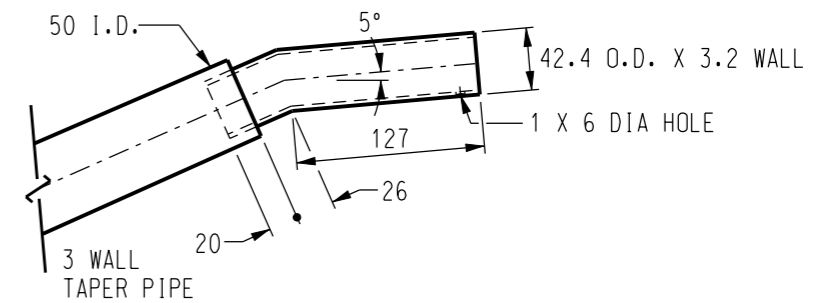


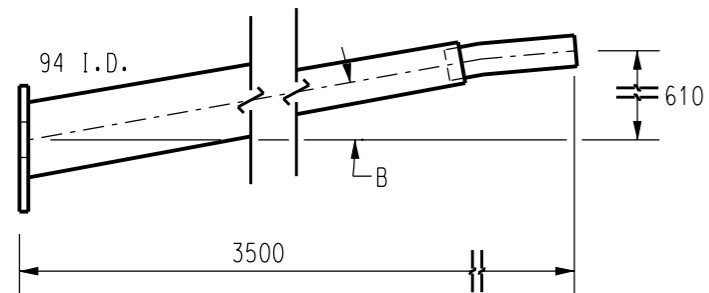
ITEM 1 SCALE 1:10



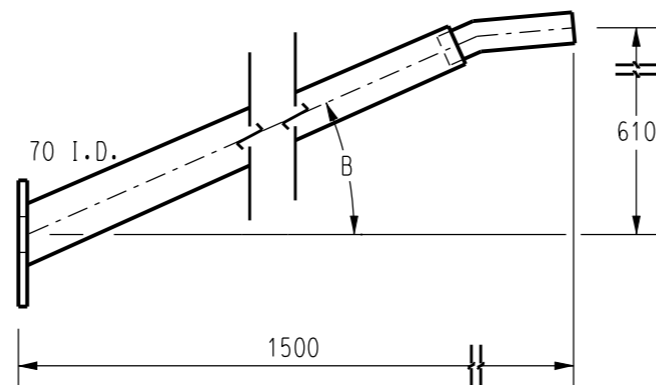
ITEM 3 SCALE 1:10



TYPICAL SPIGOT DETAIL
SCALE 1:5



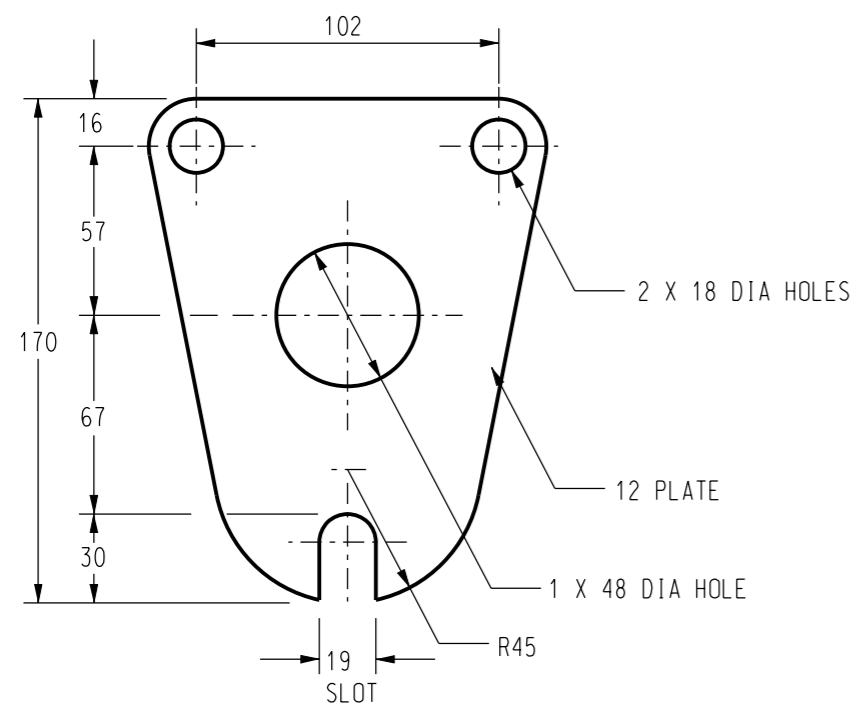
ITEM 2 SCALE 1:10



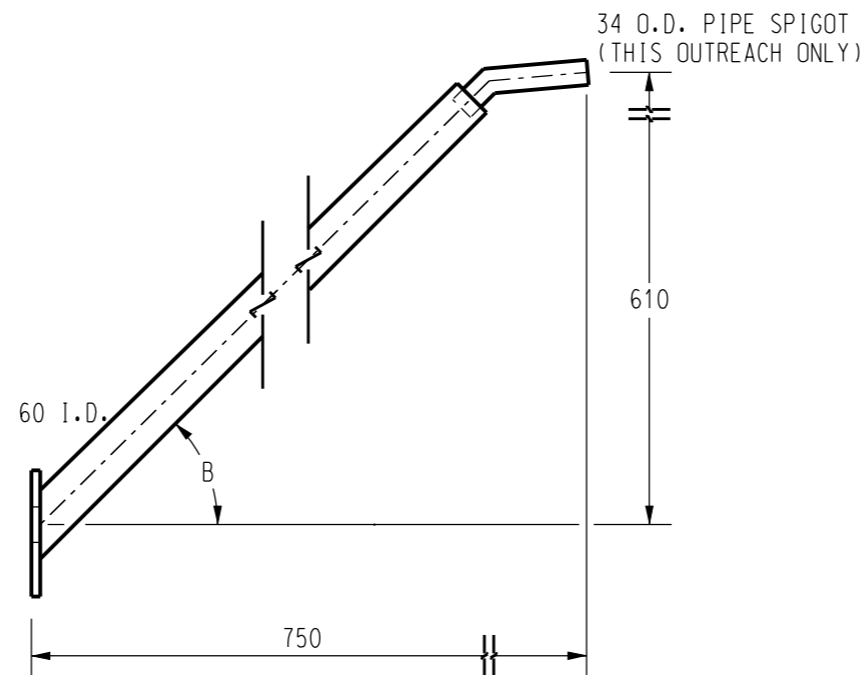
ITEM 4 SCALE 1:10

NOTES:

1. ALL WELDING AND WELD PREPARATION SHALL BE IN ACCORDANCE WITH AS1554.
2. CIRCUMFERENTIAL WELDS TO BE JOGGLED BUTT TYPE. LONGITUDINAL WELDS TO BE SINGLE BUTT TYPE. ALL WELDS TO BE MADE BY CONTINUOUS AUTOMATIC PROCESS AND ARE NOT TO BE DRESSED SMOOTH.
3. AFTER FABRICATION ALL COMPONENTS TO BE ACID DESCALED AND HOT DIPPED GALVANIZED MINIMUM 450g/sq.m TO AS4680.
4. WIND LOADINGS TO COMPLY WITH THE REQUIREMENTS OF AS1170 PART 2, i.e. REGION C AND TERRAIN CATEGORY 3. DESIGN TO BE BASED ON LUMINARIES WITH A WIND AREA OF 0.13sq.m, A MASS OF 12kg AND A DRAG COEFFICIENT OF 0.8 APPLIED TO IT.
5. OUTREACHES ARE TO CONFORM TO THE REQUIREMENTS OF AS4100 AND AS1798.
6. OUTREACHES ARE TO HAVE CONTINUOUS TAPER OVER THEIR ENTIRE LENGTH.
7. OUTREACHES OF A SHARP PRISMATIC SHAPE, i.e. POLYGONAL WILL NOT BE CONSIDERED DUE TO THEIR INCREASED DRAG COEFFICIENT.
8. ALL OUTREACH MANUFACTURERS SHALL COMPLY WITH ISO 3834.



MOUNTING FLANGE DETAIL
SCALE 1:2.5



ITEM 5 SCALE 1:10

OUTREACH DESCRIPTION					
ITEM NO	SPIGOT SIZE	STOCK CODE	LANTERN MOUNTING HEIGHT	NOMINAL LENGTH 'A'	UPLIFT ANGLE 'B'
1	42mm	6684	12m	4.5m	9°
2	42mm	228536	12m	3.5m	10°
3	42mm	6700	12m	3.0m	12°
4	42mm	10801	9m or 12m	1.5m	24°
5	34mm	287607	10.5m	0.75m	45°

NO	DESCRIPTION	DRN	DATE	CKD	APPD
8	GALVANIZING STANDARD UPDATED TO AS4680 NOTE 8 ADDED	A.T.	JAN'13	B.C.	B.C.
7	NEW OUTREACH. CHANGE TO MOUNTING FLANGE	RG1	SEP96	MWB	PJD
6	NOTE 4 AMENDED TO INCLUDE DRAG CO-EFFICIENT. NOTE 7 ADDED.	GMcK	SEP91	...	PMC
5	REDRAWN. NOTE 4 AMENDED TO SUIT NEW WIND LOADING CODE	GMcK	FEB91	...	NS
AMENDMENTS					



DES	...	POWER STANDARD DRAWING	
DRN	R. INNES	OUTREACH TAPERED STEEL 0.75. 1.5. 3.0. 3.5 & 4.5 metre	
CKD	M. BOCK		
APPD	P. DEWAR		
SCALE	1:5	A3	DRAWING NUMBER S03-1-1-10
ISSUED	FEB'91		
ALL DIM.	IN mm	DRAWING NUMBER S03-1-1-10	
DRAFTING STANDARD TO A.S.1100		CAD PRODUCT - DO NOT AMEND MANUALLY	

