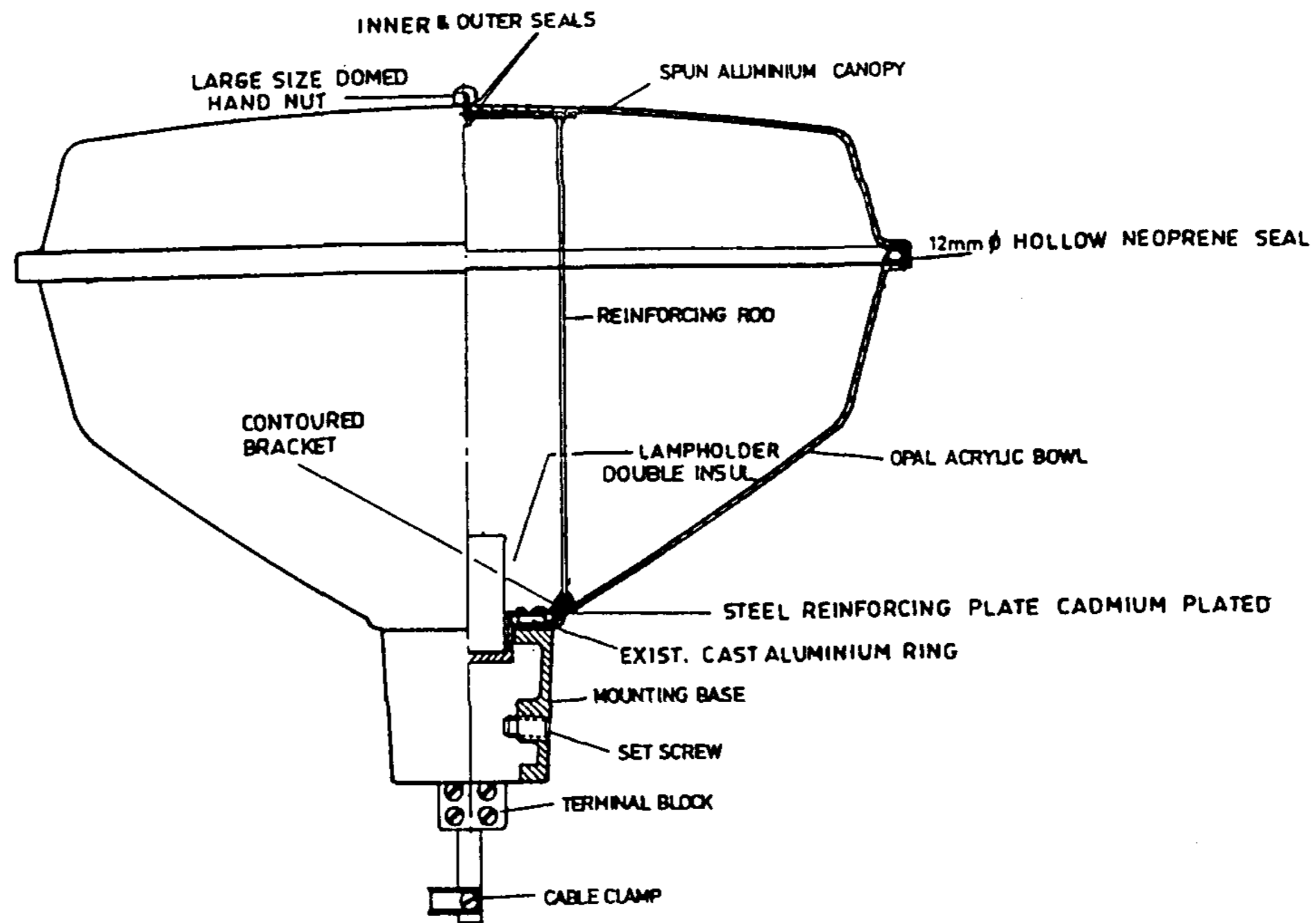


3RD ANGLE — DO NOT SCALE — REPORT ANY ERRORS. OMISSIONS TO DRAFTING OFFICE



NOTES

1. REINFORCING RODS WELDED TO CONTOURED BRACKET. SCREWED TO CAST ALUMINIUM RING & WELDED TO 25 x 3 x 250 F.M.S. AT LANTERN TOP. F.M.S. TO HAVE 8mm. BOLT WELDED CENTRALLY. THE COMPLETE UNIT CADMIUM PLATED.
2. LANTERN TO COMPLY WITH AS3771 FOR CATEGORY 'A' ROAD LUMINAIRES.

ITEM	STOCK No	DESCRIPTION
1	15990	COMPLETE LANTERN
2	7088	OPAL ACRYLIC BOWL (SPARE)

TECHNICAL DATA:
 LAMP CAPACITY — 250-400W MBF/U
 WEIGHT — 7.26 kg
 OPERATING VOLTAGE — 240V.

MATERIAL:
 MOUNTING BASE — CAST MEEHANITE
 BOWL — OPAL ACRYLIC
 CANOPY — SPUN ALUMINIUM

ITEM SIMILAR TO:
 G.E.C. AUSTRALIA PTY. LTD.
 PARKWAY 1
 CAT. No SL4891

No.	AMENDMENT	DATE	INIT
4	NOTE 2 AMENDED	FEB91	R.T.F.
3	NOTE No 2 ADDED	6/89	@
2	TITLE & DRAWING NUMBER CHANGED	12/87	RLS
1	ITEM & STOCK CODES ADDED	01.87	RLS



DES 4 MRS	STANDARD DRAWING	
DRN 111 FEB 86.	TITLE LANTERN & LAMPS	
CKD <i>Schindler</i>	MAJOR ROADS	
APPD <i>Went</i>	MERCURY VAPOUR 250/400W	
ISSUED 20.2.86	POST TOP MOUNTING	
DRAFTING STANDARD TO A.S. 1100	A3	DRAWING NUMBER S3-1-4-5
ALL DIM. IN m.m.	SCALE	SHEET
		AMD T