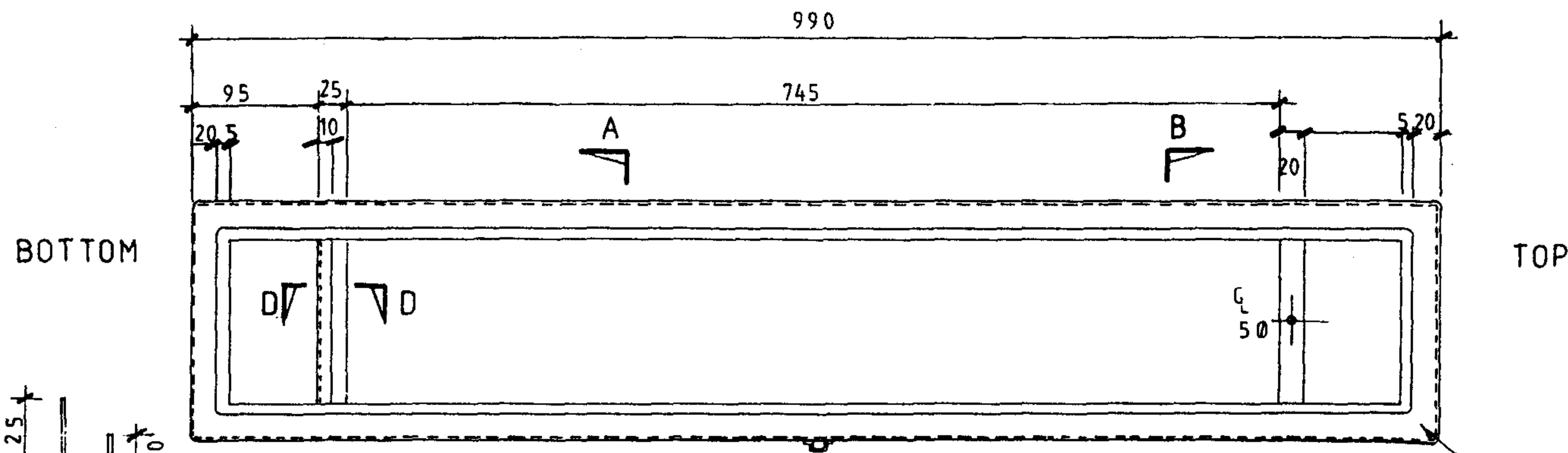
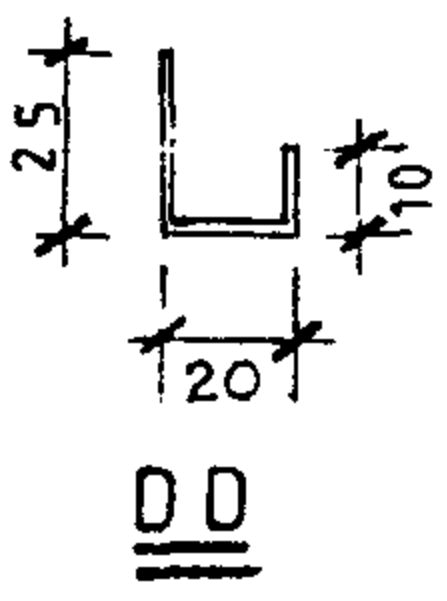


3RD ANGLE — DO NOT SCALE — REPORT ANY ERRORS, OMISSIONS TO DRAFTING OFFICE



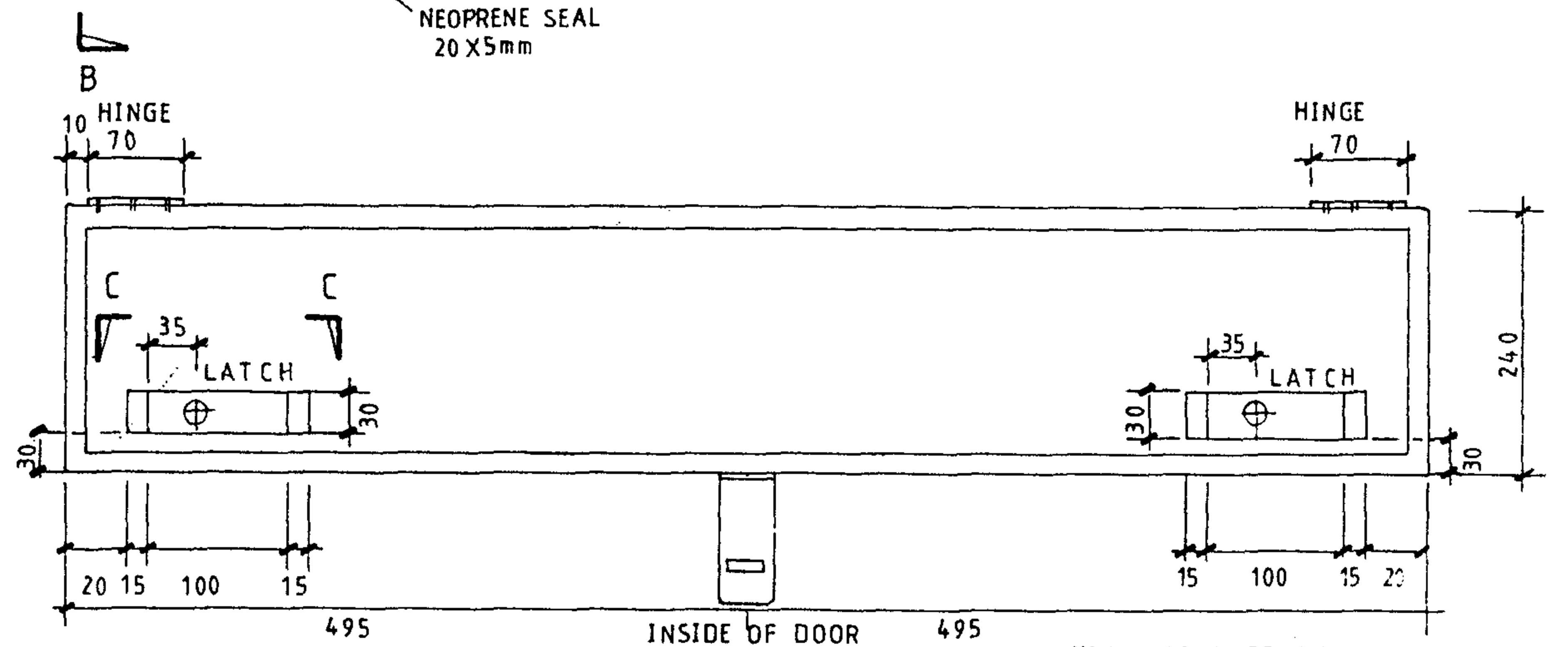
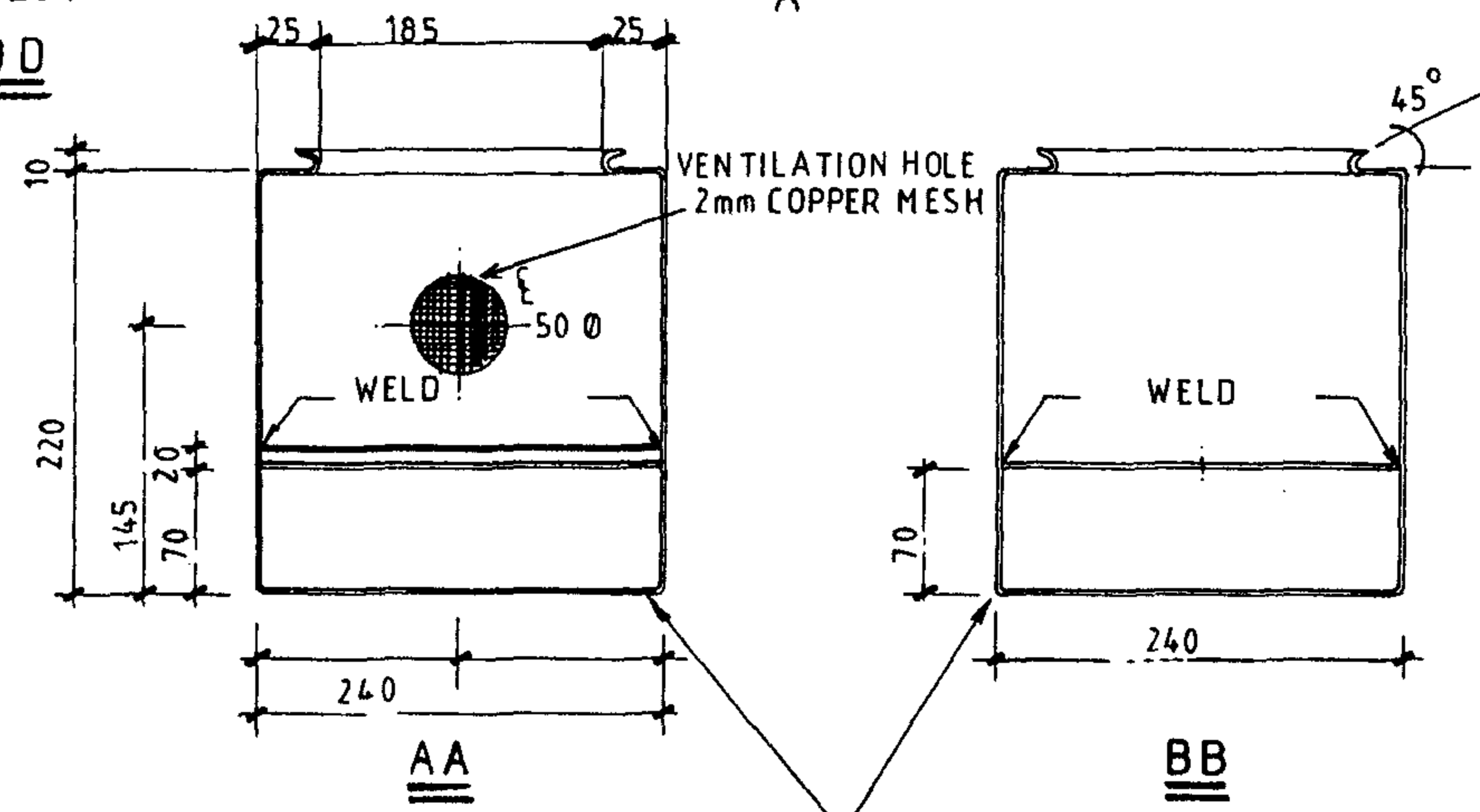
NOTES

MATERIAL : BOX AND LID SHALL BE MANUFACTURED FROM 1.4mm MILD STEEL
 PANEL SUPPORTS SHALL BE MANUFACTURED FROM 1.6mm MILD STEEL
 BOX TO BE FOLDED METAL CONSTRUCTION WITH WELDED TOP AND BOTTOM PLATES
 BOX SHALL BE PREPARED AND SUITABLY PRIMED WITH ZINC OXIDE, TWO COATS OF BIEGE ENAMEL No 388 TO B.S. S 381C - 1961 A S K 185-1968 SHALL BE APPLIED
 NEOPRENE DOOR SEAL SHALL BE FIXED TO CONTROL BOX CUBICLE WITH 'LOCTITE 406' ADHESIVE.
 HASP AND HINGE FITTINGS SHALL BE FIXED TO CONTROL BOX WITH 4mm RIVETS

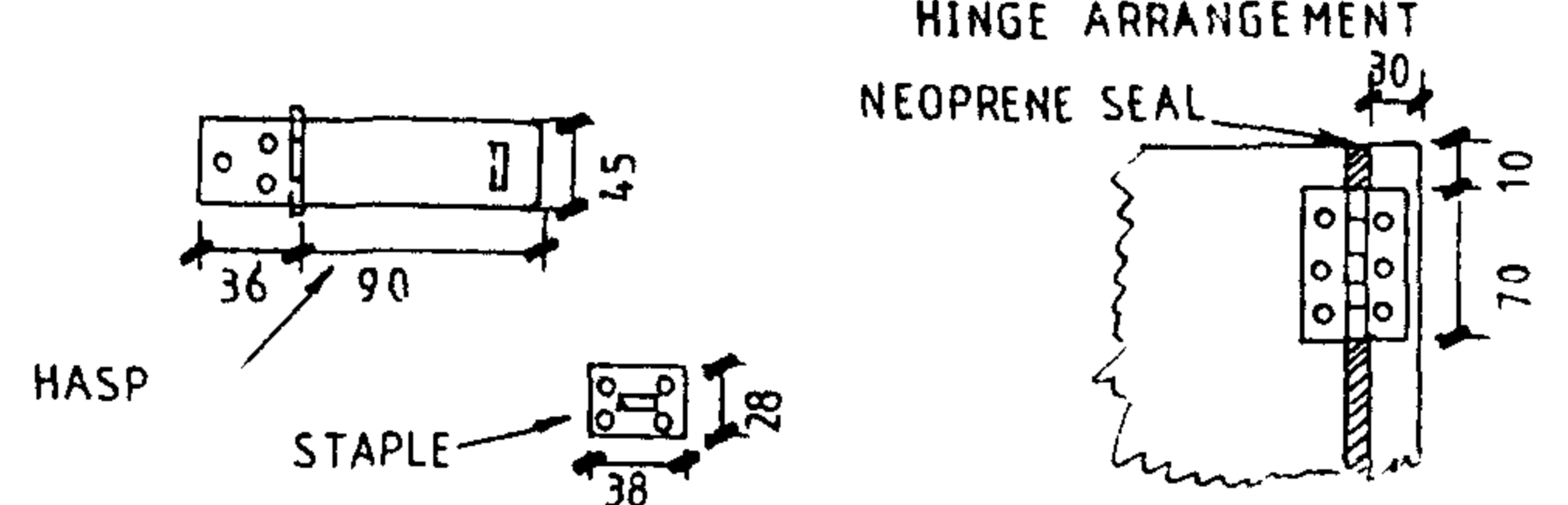
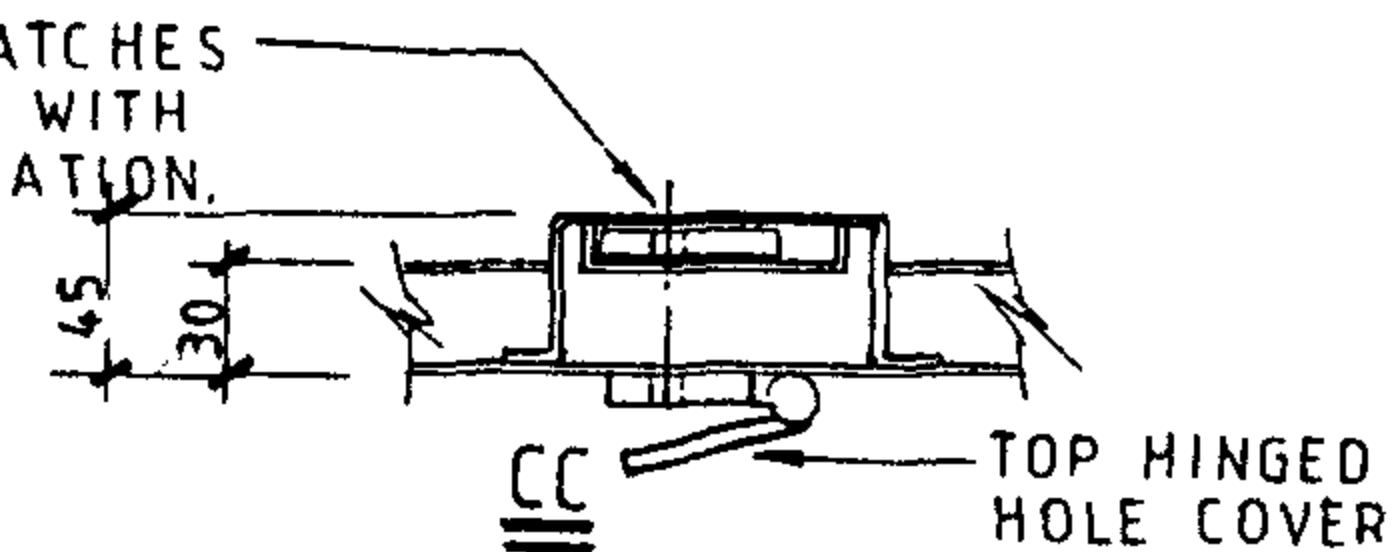


FRONT VIEW
DOOR REMOVED

NEOPRENE SEAL
20 X 5mm

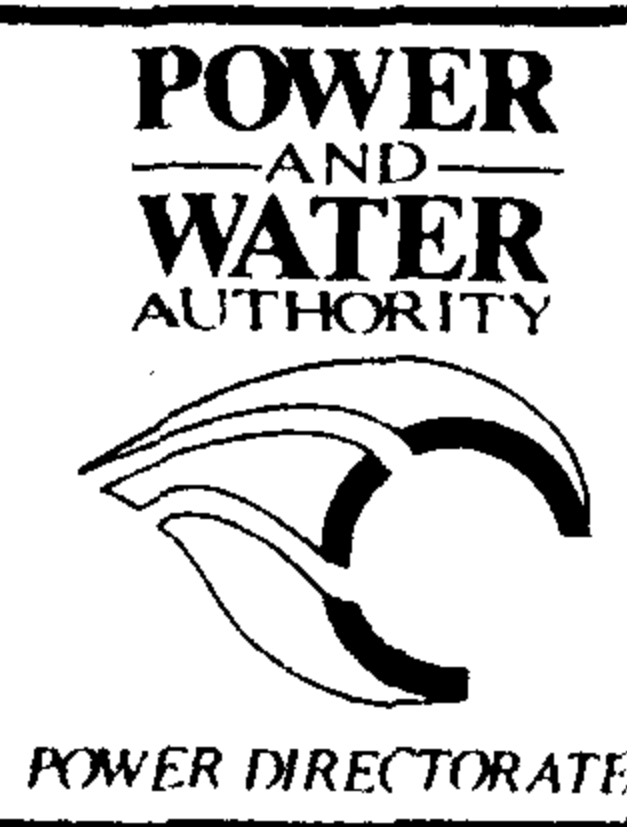


FILLET WELD ALL ROUND
 TWO DEAD BOLT LATCHES (SQUARE TONGUE) WITH ALLEN KEY OPERATION.



STOCK CODE 8466

No	AMENDMENT	DATE	INIT
4	SECTION D-D REVISED	6/93	m
3	GENERAL REVISION	3/93	m
2	TITLE & DRAWING NUMBER CHANGED	12/87	6224
1	STOCK CODE AMENDED	01.87	m



DES G McShanag
 DRNG G McShanag
 CKD *[Signature]*
 APPD *[Signature]*
 ISSUED 20.1.86
 DRAFTING STANDARD TO A.S. 1100
 ALL DIM. IN m.m.

STANDARD DRAWING	
TITL	CONTROL DATA CONTROL BOX FABRICATION DETAILS
DRAWING NUMBER	A3 S3-1-5-1
SCALE	SHEET

