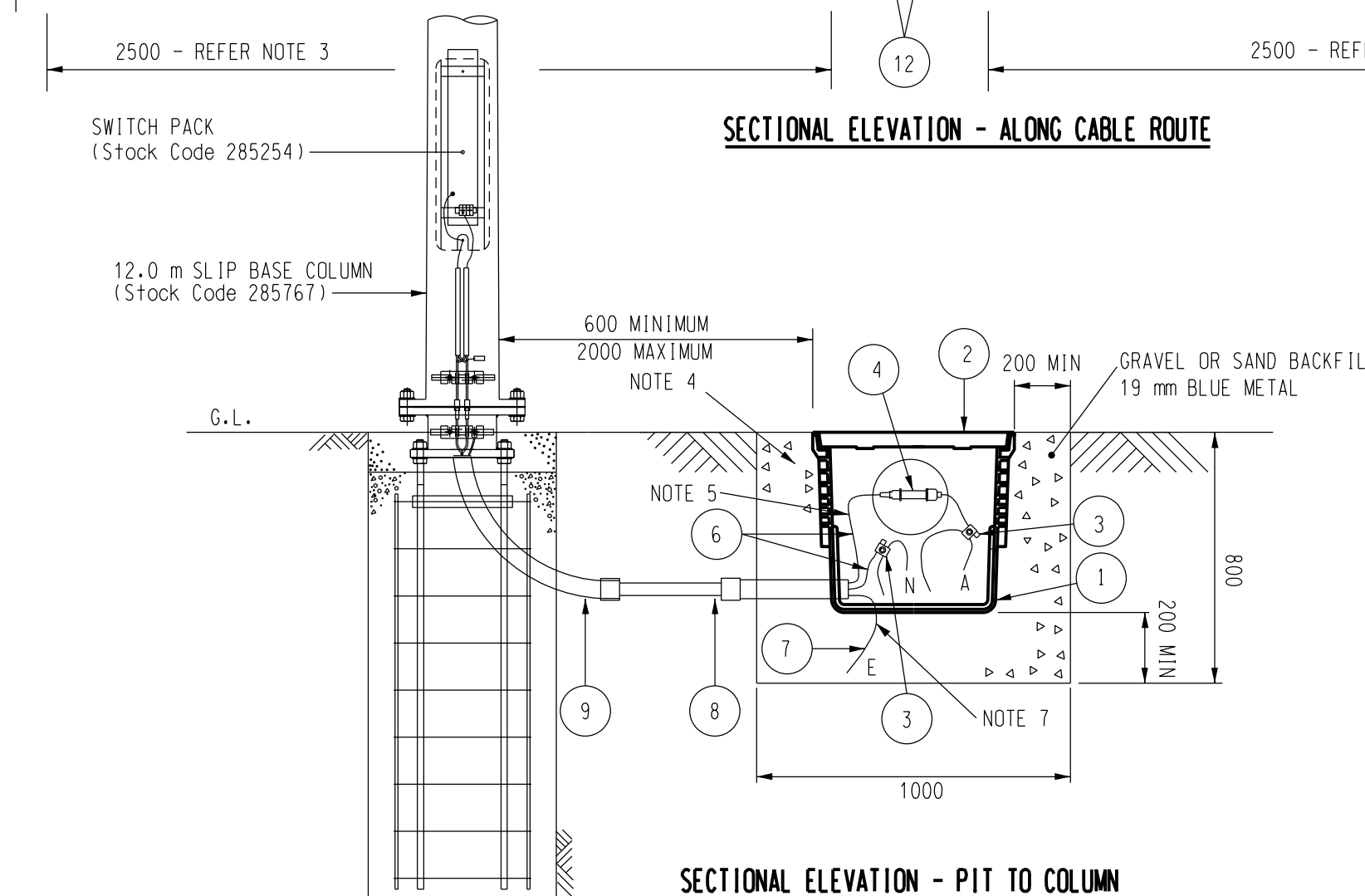


SECTIONAL ELEVATION - ALONG CABLE ROUTE



SECTIONAL ELEVATION - PIT TO COLUMN

NOTES

1. REMOVE SACRIFICIAL SHEATH AND NYLON JACKET FOR A DISTANCE OF 30mm TO ALLOW INSTALLATION OF PIERCING CONNECTOR ON MAINS CONDUCTOR.
2. CUT HOLES IN PIT AS REQUIRED TO SUIT CABLE AND CONDUIT ENTRIES.
3. CONDUITS ARE TO BE CURVED FROM THE NORMAL CABLE DEPTH (900mm) TO THE BOTTOM OF THE PIT OVER A DISTANCE OF 2500mm.
4. AREA AROUND THE LID MUST BE RIGIDLY SUPPORTED BY A MIN 150mm WIDE x 150mm DEEP CONCRETE SURROUND. THE TOP OF THE CONCRETE SURROUND SHALL BE AT FINAL GROUND LEVEL.
5. MINIMUM LENGTH OF 0.5m OF EXCESS CABLE SHALL BE STORED INSIDE THE PIT ON BOTH SIDES OF THE SUBMERSIBLE FUSE (ITEM 4).
6. ALL CRIMP CONNECTIONS SHALL BE DONE AS PER S02-2-2-10.
7. 35sqmm CU EARTH CAN BE JOINTED WITH THE PIT USING 'C' CRIMP 35/35 CONNECTOR

REFERENCE DRAWINGS

- S03-1-1-11 - COLUMN, STREET LIGHTING, SLIP BASE, TAPERED STEEL, 12.0 m OUTREACH TYPE.
- S03-1-1-12 - SLIP BASE 12.0 m COLUMN OUTREACH TYPE.
- S03-1-2-04 - RAG BOLT REINFORCEMENT FOUNDATION ARRANGEMENT
- S03-1-2-05 - INSTALLATION DETAILS - MECHANICAL AND ELECTRICAL
- S03-1-5-06 - SWITCH PACK LIGHTING COLUMN INTEGRAL
- S03-1-5-07 - SWITCH PACK WIRING DIAGRAM
- S03-1-5-14 - ELECTRICAL CONNECTION DETAILS, SLIP BASE 12.0 m COLUMN.

TAG No	QTY.	DESCRIPTION	STOCK CODE	DRG REF
12	2	'C' CLAMP 35/35 CONNECTOR	406821	S01-1-5-08
11	AR	CONDUIT - 80mm CATEGORY 'A' PVC	3939	-
10	AR	CABLE - 25sq.mm LV XLPE	9340	-
9	1	BEND - 50mm CATEGORY 'A' PVC	3871	-
8	AR	CONDUIT - 50mm CATEGORY 'A' PVC	3913	-
7	AR	CONDUCTOR - EARTHING - 35mm sq. COPPER	9829	-
6	AR	CABLE - 6mm sq. COPPER DIS	NSI	-
4	1	FUSE- SUBMERSIBLE, 16A	415807	S03-1-6-07
3	2	SUBMERSIBLE CONNECTOR 95/35	400918	-
2	1	COVER - CABLE JOINTING PIT	500705	S03-1-6-01
1	1	PIT - CABLE JOINTING	247759	S03-1-6-01

MATERIAL SCHEDULE

NO	DESCRIPTION	DRN	DATE	CKD	APPD
10	NOTE 7 ADDED	C.C.	AUG'17	I.B.	B.C.
9	FUSE RATING AMMENDED	CWM	DEC'14	B.C.	S.C.
8	NOTE 6 ADDED, SUBMERSIBLE FUSE UPDATED	A.T.	MAY'12	B.C.	S.C.
7	MIN CABLE LENGTH ADDED	J.C.	06'10	A.T.	S.C.
6	POLE TO PIT MAXIMUM ADDED	C.M.	03'10	A.T.	S.C.
5	ITEM 12 CHANGED TO 35/35 CONNECTOR	A.B.	JUL'09	A.T.	S.C.
4	S/C ITEM 3 CHANGED	J.C.	MAR'09	A.T.	S.C.
3	CONCRETE LID SURROUND	J.C.	SEP'07	B.C.	B.C.

AMENDMENTS



DES	M.BOCK	POWER STANDARD DRAWING	
DRN	J.LIVESLY	COLUMN, TAPERED STEEL, 12.0m, OUTREACH TYPE	
CKD	M.BOCK	SLIP-BASE MOUNTED SERVICE PIT/POLE BASE	
APPD	F.ROBSON	INSTALLATION AND CONNECTION DETAILS	
SCALE	NTS	A3	DRAWING NUMBER S03-1-6-03
ISSUED	FEB'97		
ALL DIM. IN	mm	CAD PRODUCT - DO NOT AMMEND MANUALLY	

