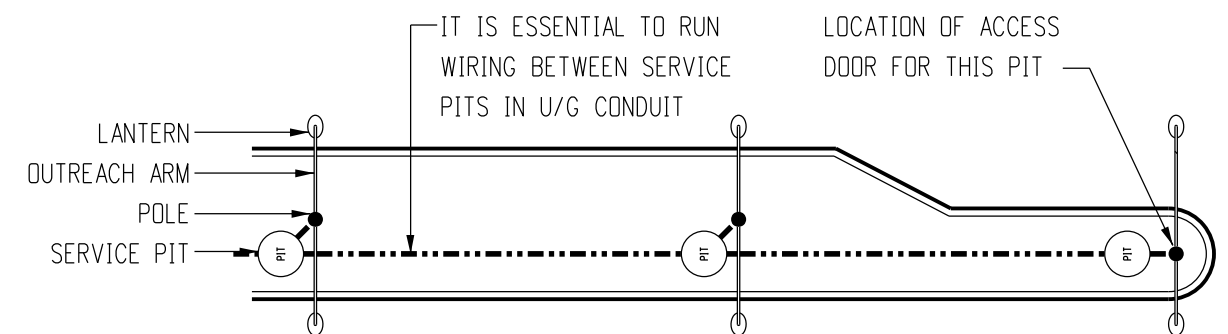


INSTALLATION OF A SLIP BASE MOUNTED COLUMN

- COLUMNS SHOULD BE DELIVERED TO PAWA IN AN ASSEMBLED CONDITION, COMPLETE WITH SLIP BASE (INCLUDING SLIP PLANE WASHER ETC) BOLTED TO THE FLANGE. ARRANGE TRANSPORT OF SLIP BASE COLUMN IN ASSEMBLED CONDITION (AS DELIVERED) TO SITE.
- AUGER POLE HOLE DEEP ENOUGH SO THAT THE SLIP PLANE WILL BE 75mm ABOVE THE FINISHED GROUND. ALSO AUGER HOLE FOR CABLE PIT AND INSTALL, IF NOT ALREADY INSTALLED AS SHOWN ON STD DRG NO S3-1-6-3 IN POSITION INDICATED BY ADJACENT DIAGRAMS.
- BEFORE STANDING THE POLE:
 - ATTACH OUTREACH ARM TO THE POLE SPIGOT USING THE CLAMPING BOLT ASSEMBLY SUPPLIED WITH THE OUTREACH ARM; THE STEEL CAP AND CABLE SUPPORT SHOULD BE REMOVED PRIOR TO THIS ACTION.
 - DRAW 4sq.mm SUPPLY CABLE THROUGH THE POLE, USING A FIBREGLASS PULL ROD, FROM THE CABLE TERMINATION ACCESS DOOR THROUGH THE TOP OF THE OUTREACH ARM AND THROUGH THE OUTREACH ARM. REPLACE THE CABLE SUPPORT WITH THE SUPPLY CABLE LOOPED AROUND IT.
 - REPLACE STEEL CAP.
 - SECURE LANTERN TO OUTREACH ARM SPIGOT AND TERMINATE CABLE.
 - ALIGN LANTERN SO THAT IT WILL BE PARALLEL WITH THE ROAD SURFACE WHEN POLE IS ERECTED; SCREW LAMP INTO HOLDER AND PHOTO ELECTRIC SWITCH INTO BASE.

TYPICAL MEDIAN STRIP AT INTERSECTION



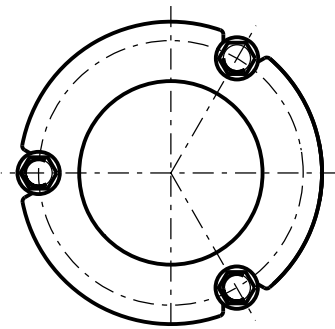
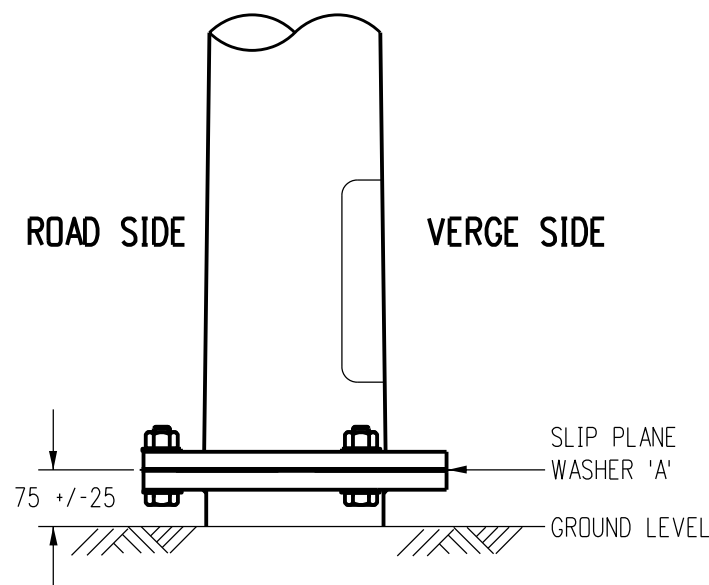
IMPORTANT

THIS IS A SLIP BASE POLE. IT IS DESIGNED TO MINIMIZE INJURIES IF INVOLVED IN A CRASH.

IT IS IMPORTANT THAT ON INSTALLATION THE FLANGE BOLTS ARE SLACKENED OFF AND RETIGHTENED TO 90Nm (105 ft.lb) ONE AT A TIME. IT IS ALSO IMPORTANT THAT THE THIN SLIP PLANE WASHER BETWEEN THE FLANGES IS NOT DAMAGED. DAMAGED SLIP PLANE WASHERS ARE TO BE REPLACED.

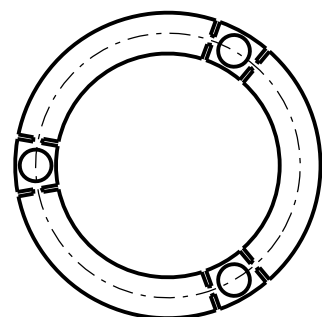
THE SLIP PLANE SHOULD BE 75mm ABOVE GROUND LEVEL TO ALLOW MOVEMENT OF THE POLE IF INVOLVED IN A CRASH.

IF CONCRETE MOWER PAD IS FORMED AROUND POLE, BOLTS AND NUTS MUST BE CLEAR OF CONCRETE.

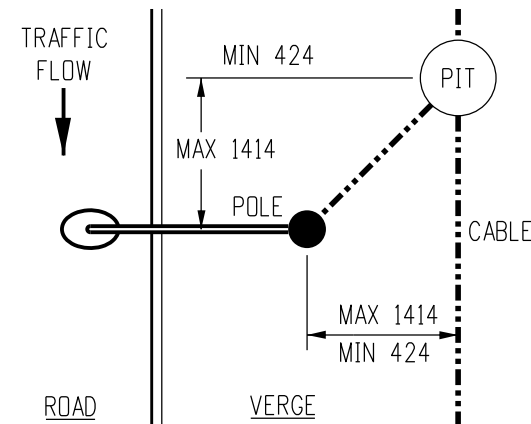


PLAN

SCALE 1:10



DETAIL A
SLIP PLANE WASHER



POLE ERECTED ON VERGES:
ACCESS DOOR, CABLE AND PIT SHOULD BE AWAY FROM ROAD.
CABLE PIT SHOULD BE ON APPROACH SIDE OF POLE.

POLES ERECTED IN CENTRE MEDIANS:
THE CHOICE OF WHICH SIDE THE ACCESS DOOR, PIT AND CABLE IS OPTIONAL EXCEPT THOSE POLES ADJACENT TO A RIGHT HAND TURN LANE.

POLES ERECTED ON TRAFFIC ISLANDS:
THE ACCESS DOOR SHOULD BE ON THE LEAST VULNERABLE SIDE FOR MAINTENANCE PERSONNEL.

REFERENCE DRAWINGS

S3-1-1-11: SPECIFICATION AND FABRICATION DETAILS
S3-1-1-12: SLIP BASE SPECIFICATION & FAB DETAILS
S3-1-2-2 : RAG BOLT REINF, TYPE 12 & 18 FAB DETAILS
S3-1-2-4 : FOUNDATION ARRANGEMENT
S3-1-5-14: ELECTRICAL CONNECTION DETAILS
S3-1-6-3 : SERVICE PIT/POLE BASE INST & CON DETAILS

NO	DESCRIPTION	DRN	DATE	CKD	APPD
1	TORQUE VALUE & POLE TO PIT DISTANCE UPDATED	JC	MAY'2010	A.T.	S.C.
AMENDMENTS					

PowerWater
NORTHERN TERRITORY

DES	P.DEWAR	POWER STANDARD DRAWING		
DRN	R.INNES	COLUMN, TAPERED STEEL, 12.0m, OUTREACH TYPE SLIP-BASE MOUNTED INSTALLATION DETAILS MECHANICAL AND ELECTRICAL		
CKD	M.BOCK			
APPD	F.ROBSON			
SCALE	AS SHOWN			
ISSUED	FEB'97	A3	DRAWING NUMBER	S03-1-2-5
ALL DIM. IN	mm		CAD PRODUCT - DO NOT AMEND MANUALLY	
DRAFTING STANDARD TO A.S.1100				AMDT