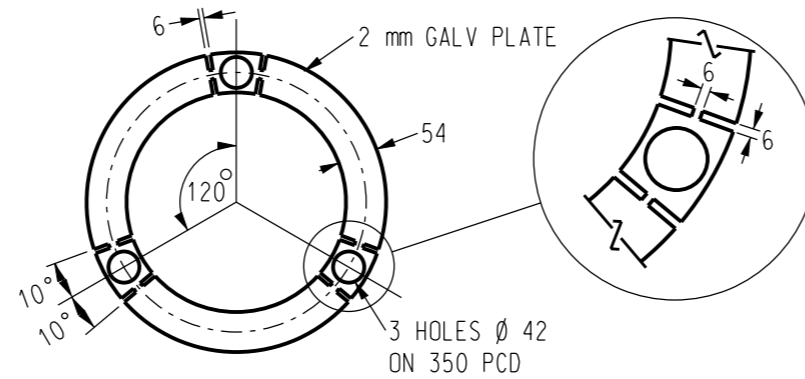
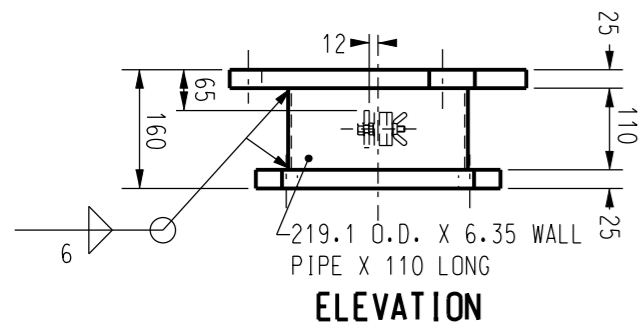


PLAN

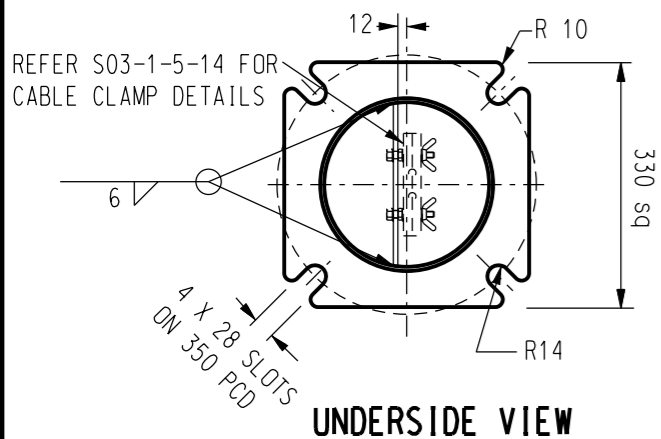


ITEM 2 - SLIP JOINT WASHER

SCALE 1:10



ELEVATION



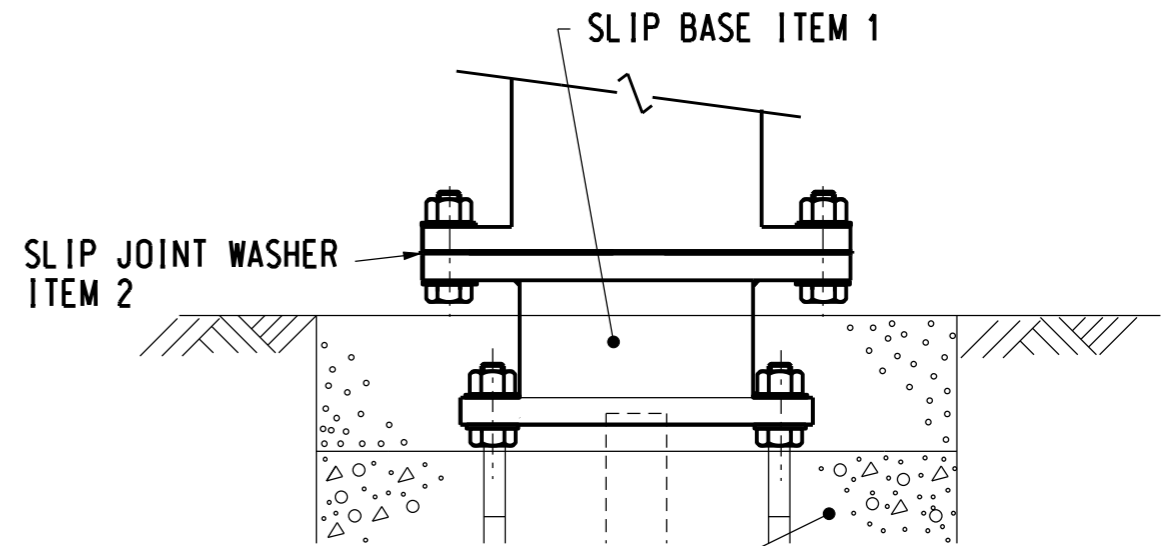
UNDERSIDE VIEW

ITEM 1 - SLIP BASE

SCALE 1:10

**NOTES :**

1. ALL WELDING AND WELD PREPARATION SHALL BE IN ACCORDANCE WITH AS 1554.
2. EACH SLIP BASE TO BE SUPPLIED WITH 3 OFF M36 HIGH TENSILE CLAMPING BOLT, WASHER AND NUT ASSEMBLIES (ALL HOT DIP GALVANIZED).
3. SLIP BASE AND SLIP JOINT WASHER MATERIAL TO BE STEEL GRADE 250 MINIMUM TO AS 3673.
4. CIRCUMFERENTIAL WELDS TO BE JOGGLED BUTT TYPE. LONGITUDINAL WELDS TO BE SINGLE BUTT TYPE. ALL WELDS TO BE MADE BY CONTINUOUS AUTOMATIC PROCESS AND ARE NOT TO BE DRESSED SMOOTH.
5. AFTER FABRICATION ALL COMPONENTS TO BE ACID DE-SCALED AND HOT DIPPED GALVANIZED MINIMUM 450g/sq.m TO AS4680.



FOR FOOTING DETAILS REFER DRG S03-1-2-04  
**SLIP BASE GENERAL ARRANGEMENT**

SCALE N.T.S.

**REFERENCE DRAWINGS**

- S03-1-1-11 : COLUMN STREET LIGHTING, SLIP BASE, TAPERED STEEL 12.0 m OUTREACH TYPE.
- S03-1-2-02 : RAG BOLT REINFORCEMENT, TYPE 12 & TYPE 18 FABRICATION DETAILS
- S03-1-2-04 : RAG BOLT REINFORCEMENT SLIP BASE 12.0 m COLUMN, FOUNDATION ARRANGEMENT.
- S03-1-2-05 : INSTALLATION DETAILS, MECHANICAL AND ELECTRICAL.
- S03-1-5-14 : ELECTRICAL CONNECTION DETAILS, SLIP BASE, 12 m COLUMN.
- S03-1-6-03 : MISCELLANEOUS SLIP BASE POLE & PIT CONNECTION DETAILS.

NO	DESCRIPTION	DRN	DATE	CKD	APPD
1	GALVANIZING STANDARD UPDATED TO AS4680	A.T.	JAN'13	B.C.	B.C.
AMENDMENTS					



DES	M. BOCK	POWER STANDARD DRAWING		
DRN	J. LIVESLY	<b>COLUMN, TAPERED STEEL, 12.0m, OUTREACH TYPE SLIP-BASE MOUNTED SLIP BASE SPECIFICATION AND FABRICATION DETAILS</b>		
CKD	M. BOCK			
APPD	F. ROBSON			
SCALE	AS SHOWN			
ISSUED	FEB'97	<b>A3</b>	<b>DRAWING NUMBER</b>	<b>S03-1-1-12</b>
ALL DIM.	IN mm			
DRAFTING STANDARD TO A.S.1100		CAD PRODUCT - DO NOT AMEND MANUALLY		AMD T