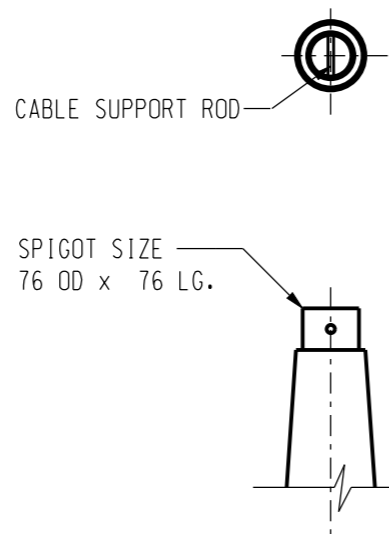
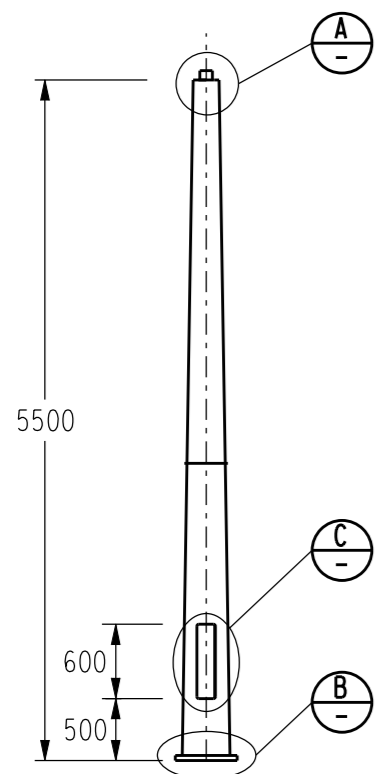
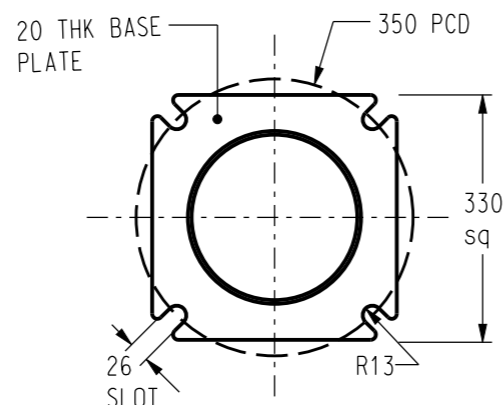


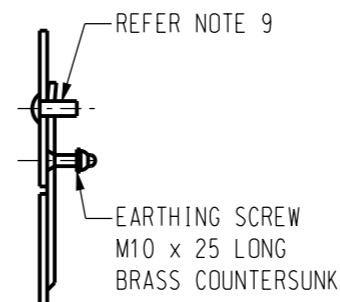
3RD ANGLE -DO NOT SCALE - REPORT ANY ERRORS, OMISSIONS TO DRAFTING OFFICE



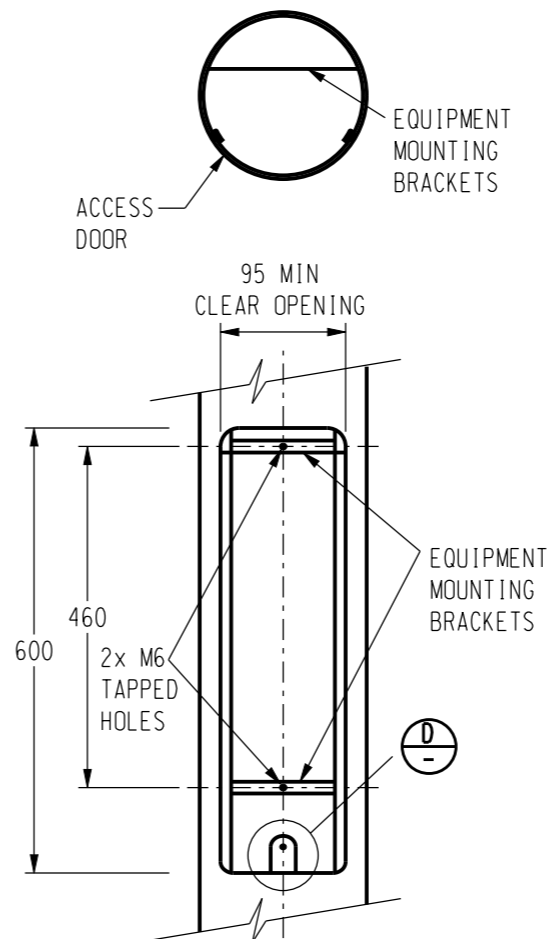
SPIGOT - DETAIL A
SCALE 1:10



BASE PLATE - DETAIL B
SCALE 1:15



DETAIL C
SCALE 1:5



EQUIPMENT ACCESS - DETAIL D
SCALE 1:10
(DOOR REMOVED FOR CLARITY)

NOTES :

- ALL WELDING AND WELD PREPARATION SHALL BE IN ACCORDANCE WITH AS1554.
- CIRCUMFERENTIAL WELDS TO BE JOGGLED BUTT TYPE. LONGITUDINAL WELDS TO BE SINGLE BUTT TYPE. ALL WELDS TO BE MADE BY CONTINUOUS AUTOMATIC PROCESS AND ARE NOT TO BE DRESSED SMOOTH.
- AFTER FABRICATION ALL COMPONENTS TO BE ACID DE-SCALED AND HOT DIPPED GALVANIZED MINIMUM 450g/sq.m TO AS4680.
- WIND LOADINGS TO COMPLY WITH THE REQUIREMENTS OF AS1170.2 - SECTION 4
DESIGNS ARE TO BE BASED ON -
- MAXIMUM WIND SPEED OF $V_u = 66\text{m/sec}$ DERIVED FROM A DESIGN LIFE OF 25 YEARS WITH A 5% PROBABILITY FACTOR OF V_u BEING EXCEEDED IN THAT PERIOD.
- MAXIMUM WIND SPEED OF $V_s = 47\text{m/sec}$ DERIVED FROM A DESIGN LIFE OF 25 YEARS WITH A 63% PROBABILITY FACTOR OF V_s BEING EXCEEDED IN THAT PERIOD WITH A MAXIMUM DEFLECTION LIMIT OF 4% OF NOMINAL LENGTH.
- REGION 'C' AND TERRAIN CATEGORY '3'
- LUMINARIES WITH A WIND AREA OF 0.16sq.m, A MASS OF 7kg EACH AND DRAG CO-EFFICIENT OF 0.9
- COLUMNS ARE TO CONFORM TO THE REQUIREMENTS OF AS4100 AND AS1798.
- COLUMNS ARE TO HAVE CONTINUOUS TAPER OVER THEIR ENTIRE LENGTH AND A STEEL THICKNESS OF NOT LESS THAN 3mm.
- TWO PIECE COLUMNS MUST BE ASSEMBLED PRIOR TO DELIVERY.
- ACCESS DOORS ARE NOT INTERCHANGEABLE. ENSURE THAT INDIVIDUAL COLUMNS AND DOORS ARE SUITABLY MATCHED AND MARKED.
- EQUIPMENT ACCESS DOOR TO BE PROVIDED (DETAIL C) HAVING 'TAMPER PROOF' LOCKING DEVICE. DOOR ACCESS SCREW TO BE M10 STAINLESS STEEL I.S.O. METRIC BUTTON HEAD SOCKET TYPE.
- ALL POLE MANUFACTURERS SHALL COMPLY WITH ISO 3834.

ITEM 1 - 5.5m POST TOP TYPE COLUMN
STOCK CODE 8912
SCALE 1:60

NO	DESCRIPTION	DRN	DATE	CKD	APPD
11	GALVANIZING STANDARD UPDATED TO AS4680 NOTE 10 ADDED	A.T.	JAN'13	B.C.	B.C.
10	REDRAWN ON CAD	A.D	05/98	R.I.	F.R.
9	DOOR WIDTH OPENING INCREASED	gmck	7/93	N.S	B.T.K
8	NOTE 4 AMENDED	gmck	11/91	N.S	-
7	DOOR OPENING DIMENSION ALTERED FROM 150 TO 100	gmck	9/91	pmc	-
6	REDRAWN, NOTE 4 AMENDED TO SUIT NEW WIND LOADING CODE	gmck	2/91	N.S.	-
AMENDMENTS					



DES	POWER STANDARD DRAWING	
DRN	A.DAVIS	COLUMN TAPERED STEEL 5.5 METRE POST TOP TYPE
CKD	R.INNES	
APPD	F.ROBSON	
SCALE	AS SHOWN	
ISSUED	MAY'98	A3
ALL DIM. IN mm		
DRAWING NUMBER		S03-1-1-08
DRAFTING STANDARD TO A.S.1100		CAD PRODUCT - DO NOT AMEND MANUALLY

