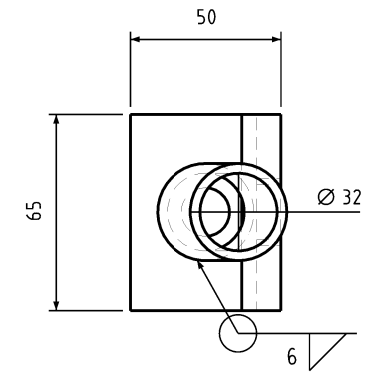
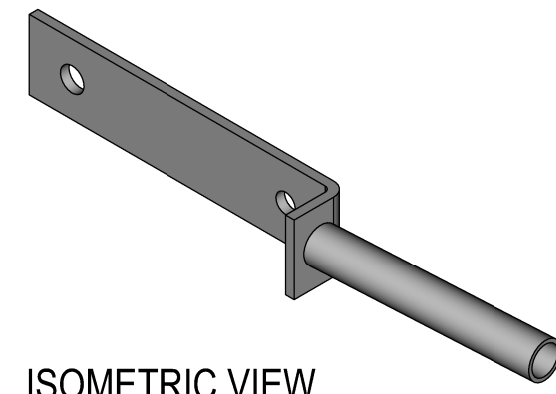


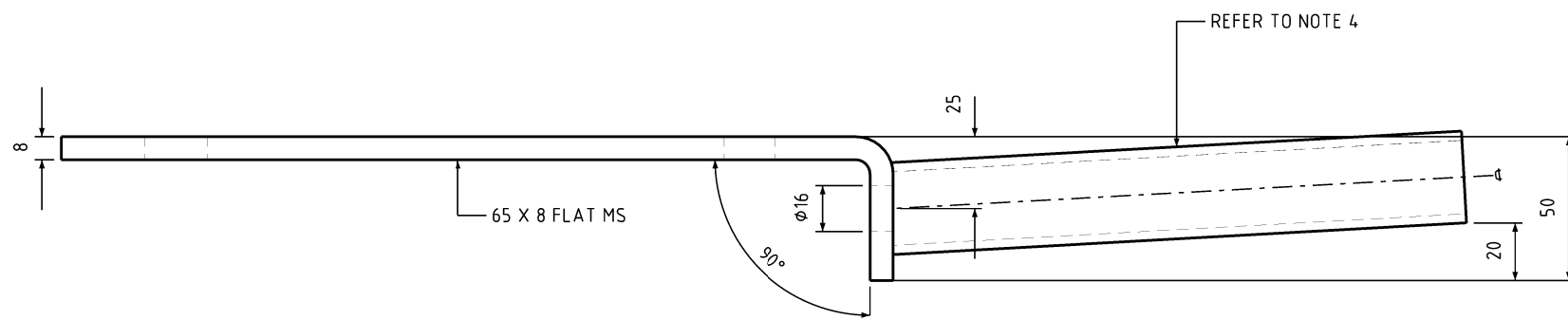
PLAN VIEW
1:2.5



FRONT VIEW
1:2.5



ISOMETRIC VIEW
N.T.S.



SIDE VIEW
1:2.5

NOTES:

1. ALL WORKMANSHIP AND MATERIALS TO BE IN ACCORDANCE WITH AS 1204.
2. ALL WELDING AND WELD PREPARATION TO BE IN ACCORDANCE WITH AS 1554. FILLET WELDS TO BE 6mm U.N.O.
3. ALL ROUGH OR BURRED SURFACES TO BE DRESSED CLEAN.
4. AFTER FABRICATION AND CLEANING UP ALL COMPONENTS TO BE ACID DESCALED AND HOT DIPPED GALVANIZED IN ACCORDANCE WITH PAWA STANDARD TECHNICAL SPECIFICATION NO STS 029.
5. OUTREACHES ARE TO CONFORM TO REQUIREMENTS OF AS 4100 AND AS 1798.
6. SPIGOT ANGLE SET FOR 5° UPCAST.
7. FOR LUMINAIRES 5kg
8. OUTREACH MOUNTING PLATE SHALL BE IN COMPLETE CONTACT WITH LV CROSSARM

ITEM 1 - LUMINAIRE OUTREACH (ITEM NUMBER - 288803)

DRG NO	DESCRIPTION	NO	DESCRIPTION	DRN	DATE	CKD	APPD
x	x	1	NOTE 7 AMENDED & NOTE 8 ADDED	C.C.	NOV'18	B.V.	B.C.
		0	ISSUED FOR CONSTRUCTION	R.I.	FEB'97	A.B.	F.R.R.
ASSOCIATED DRAWINGS		AMENDMENTS					



DES	R.HAIGH	POWER STANDARD DRAWING	
DRN	R.INNES	BRACKET LUMINAIRE OUTREACH (MAXI) LV CROSSARM	
CKD	A.B.	A3	DRAWING NUMBER S03-1-3-10
APPD	F.R.R.		
SCALE	AS SHOWN		
ISSUED	FEBRUARY 1997		
ALL DIM. IN mm			
DRAFTING STANDARD TO A.S.1100		CAD PRODUCT - DO NOT AMEND MANUALLY	

