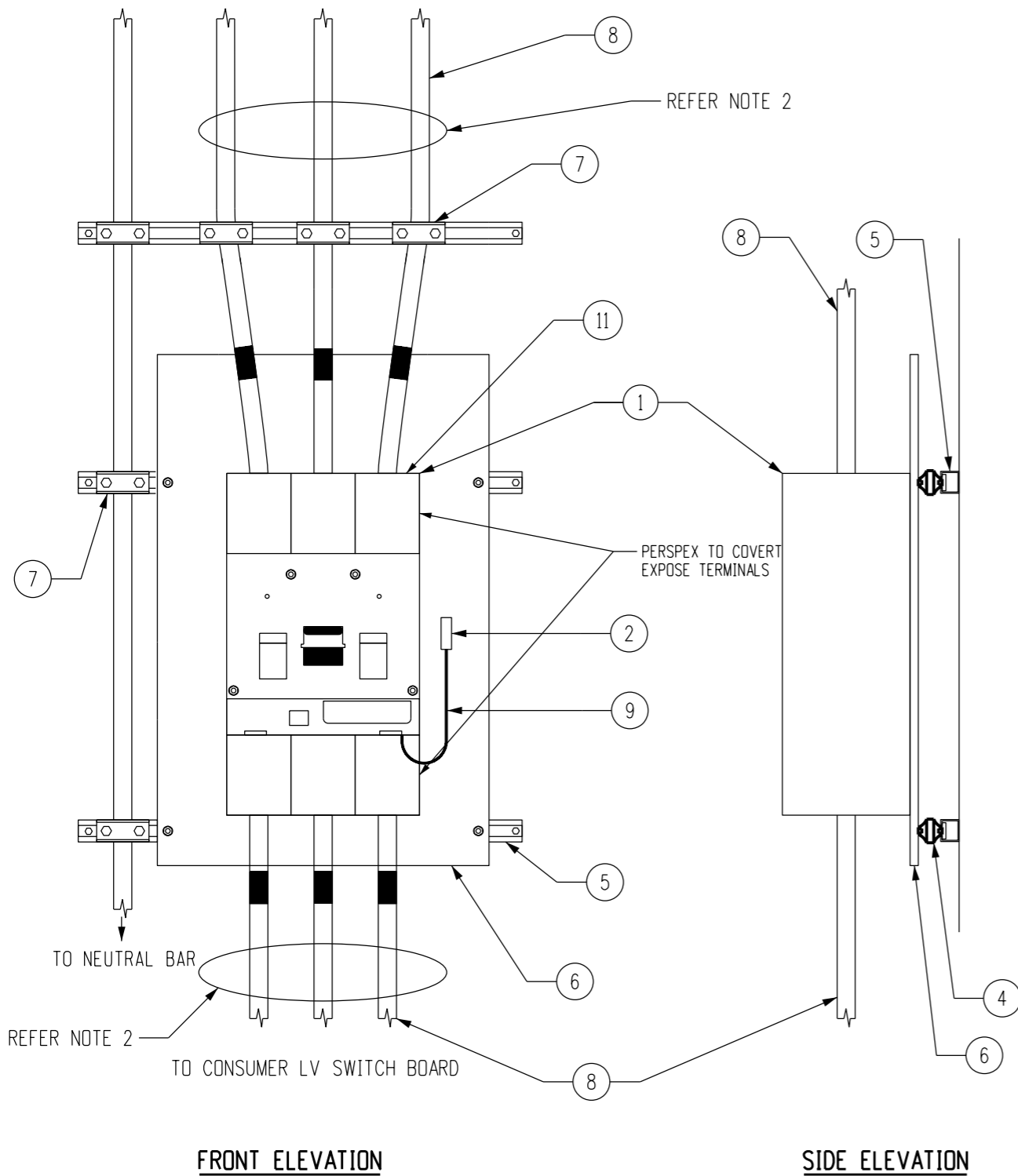


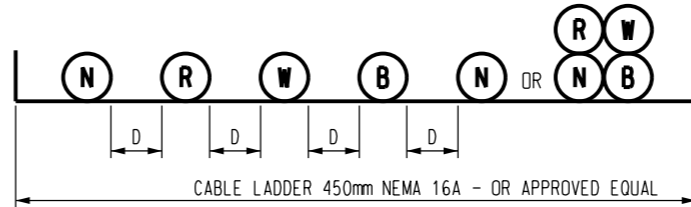
FROM TRANSFORMER LV BUSHINGS REFER TO S02-2-7-62



NOTES:

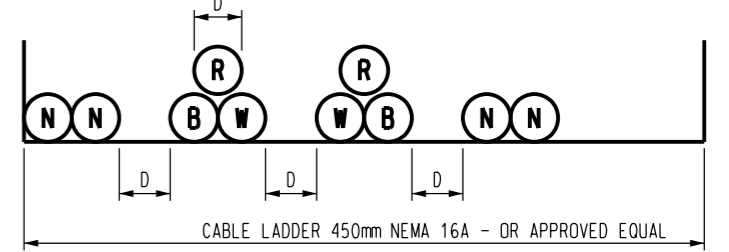
1. MCCB SIZE IS TO SUIT THE SCOPE OF WORKS
2. CABLES SHALL BE SECURED ON CABLE LADDERS MOUNTED ON WALLS OR SUSPENDED FOR THE CEILING. CABLES SHALL BE MOUNTED IN A TREFOIL CONFIGURATION WHENEVER POSSIBLE USING AN APPROVED CABLE CLEAT AND CABLE LADDER ARRANGEMENT.
3. PREFERRED THAT THE CONSUMER MAIN IS CONNECTED TO THE BOTTOM OF THE MCCB.
4. THE MCCB SHALL BE MOUNTED ON A 15mm THICK INSULATED BAKELITE BOARD, WHICH IS MOUNTED TO THE SUBSTATION WALL USING UNISTRUT CHANNELS AND 50mm LV INSULATING BOBBINS.
5. ALL NEUTRAL AND EARTH CONNECTIONS SHALL BE CONNECTED TO THE SUBSTATION MAIN EARTH BAR ON EITHER SIDE OF THE MCCB. REFER TO S02-2-5-09.
6. PHASE COLOUR CODE HEATSHRINK SHALL BE APPLIED TO CABLES BEFORE CONNECTION ONTO THE MCCB AND TERMINATION COVERS.

500KVA TRANSFORMERS. SINGLE CIRCUIT EACH PHASE



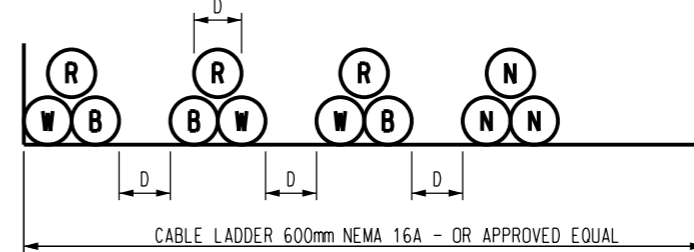
LOCATE NEUTRAL AT ONE LOCATION ONLY AS SHOWN TO SUIT EQUIPMENT LOCATION.

750 AND 1000KVA TRANSFORMERS. TWIN CIRCUIT EACH PHASE



LOCATE NEUTRAL AT ONE LOCATION ONLY AS SHOWN TO SUIT EQUIPMENT LOCATION.

1500KVA TRANSFORMERS. TRIPLE CIRCUIT EACH PHASE



ITEM	QTY	DESCRIPTION	STOCK CODE	DWG No.
11	A/R	LV CABLE TERMINATION DETAILS		S02-2-2-10
10	A/R	70SQMM YELLOW/GREEN EARTH CABLE, COPPER	401059	-
9	500mm	16SQmm SDI CABLE, NO LONGER THAN 500mm	1644	-
8	A/R	FLEXIBLE COPPER CABLE R-EP-110	-	S02-1-1-41
7	A/R	SUITABLE PWC APPROVED CABLE CLEAT, SINGLE AND FOUR CORE SUITABLE PWC APPROVED CABLE CLEAT, THREE CORE	-	S02-1-9-03 S01-1-4-53
6	A/R	15mm THICK INSULATED BAKELITE BOARD	-	-
5	A/R	UNISTRUT P1000-HC HDG CHANNEL,	8680	-
4	A/R	50mm LV INSULATING BOBBIN	-	-
3	1	63A "RED SPOT" FUSE	9936	-
2	1	"RED SPOT" FUSE BASE FOR INTERNAL LIGHTING AND POWER SUPPLY	1503	-
1	A/R	PWC APPROVED MCCB	-	-

MATERIAL SCHEDULE

NO	DESCRIPTION	DRN	DATE	CKD	APPD
3	NOTES AMENDED & ITEM ADDED	C.C.	MAY'18	I.B.	B.C.
2	RENAMED, SHEET 2 ADDED, MCCB ARRANGMENT REDESIGNED	A.T.	AUG'16	I.B.	B.C.
1	TRANSFORMER SIZING ADDED, NOTES UPDATED	A.T.	JUN'14	B.C.	B.C.



DES	B.C.	POWER STANDARD DRAWING		
DRN	A.T.	INDOOR SUBSTATION LV EQUIPMENT GENERAL ARRANGMENT		
CKD	I.B.			
APPD	B.C.			
SCALE	N.T.S.			
ISSUED	AUG'16	A3	DRAWING NUMBER	S02-2-7-49
ALL DIM. IN mm				
DRAFTING STANDARD TO A.S.1100		CAD PRODUCT - DO NOT AMEND MANUALLY		AMDT