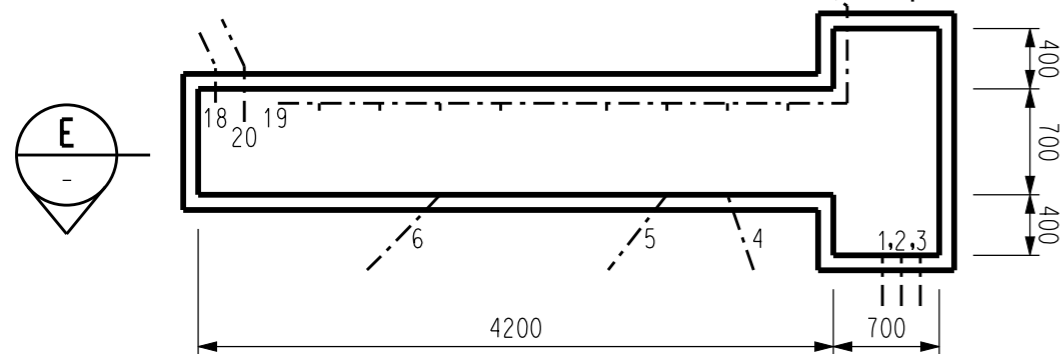
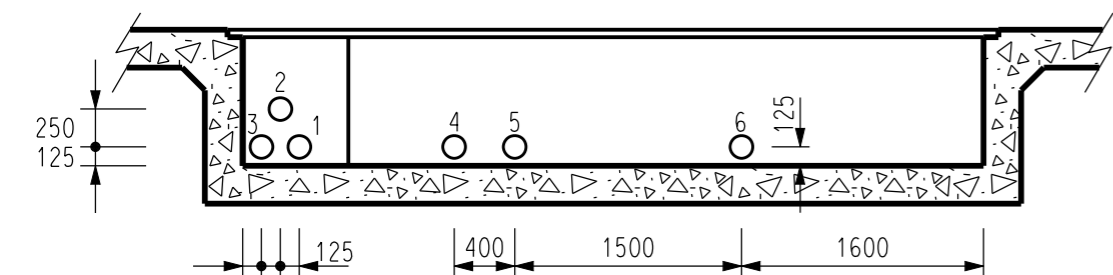


SECTION C-C
(TYPICAL FOR PERSONNEL DOORS)

NOT TO SCALE

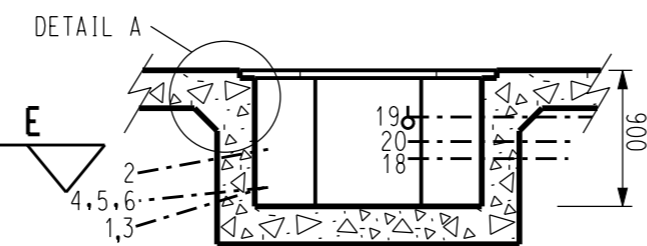


PLAN VIEW SCALE 1:50

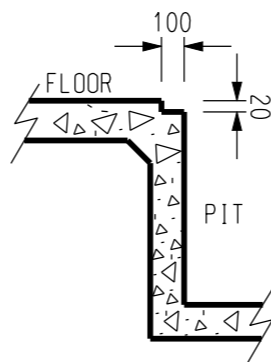


SECTION E-E SCALE 1:50

HV PIT LID



SECTION F-F SCALE 1:50



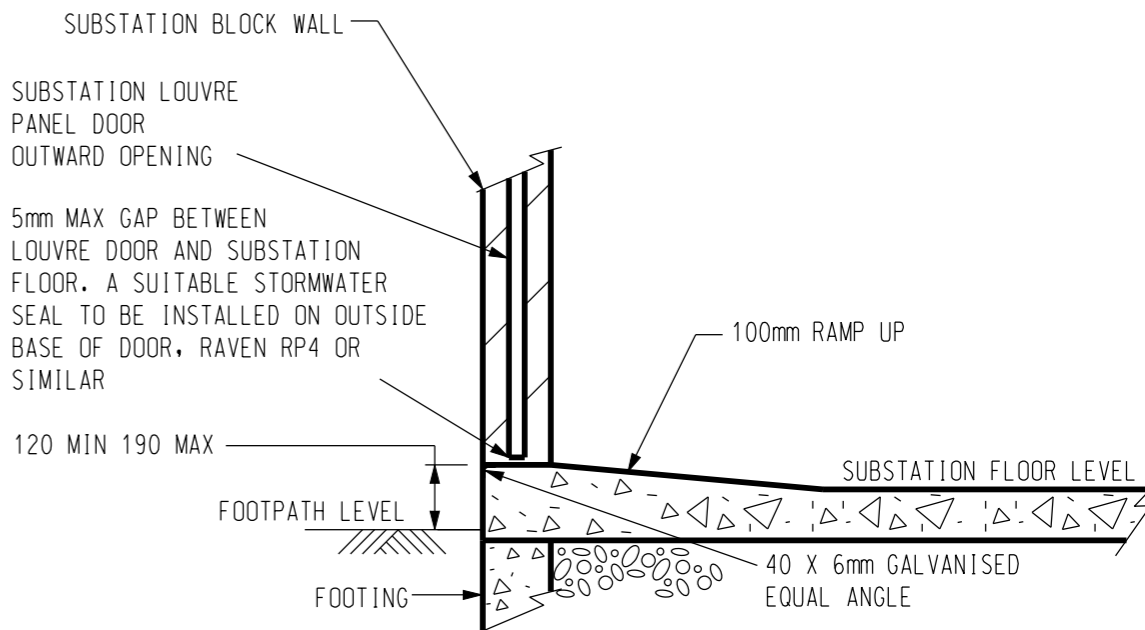
DETAIL - A

NOTES

1. ALL PERSONNEL DOORS ARE TO BE HUNG SO THAT THE CENTRELINE OF DOOR IS DIRECTLY OVER THE THRESHOLD.
2. ADDITIONAL STEPS (UP TO A MAXIMUM OF 3) INCLUDING AN APPROPRIATE HANDRAIL MAY BE PROVIDED AT ANY PERSONNEL DOORWAY. IF THE STEPS ARE TO BE LOCATED WITHIN THE SUBSTATION CHAMBERS, IT WILL BE NECESSARY TO EXTEND THE SUBSTATION CHAMBER TO ACCOMMODATE THE ENCROACHMENT OF THE STEPS, SUCH THAT THE INTERNAL DIMENSIONS OF THE SUBSTATION CHAMBER ARE NOT REDUCED.

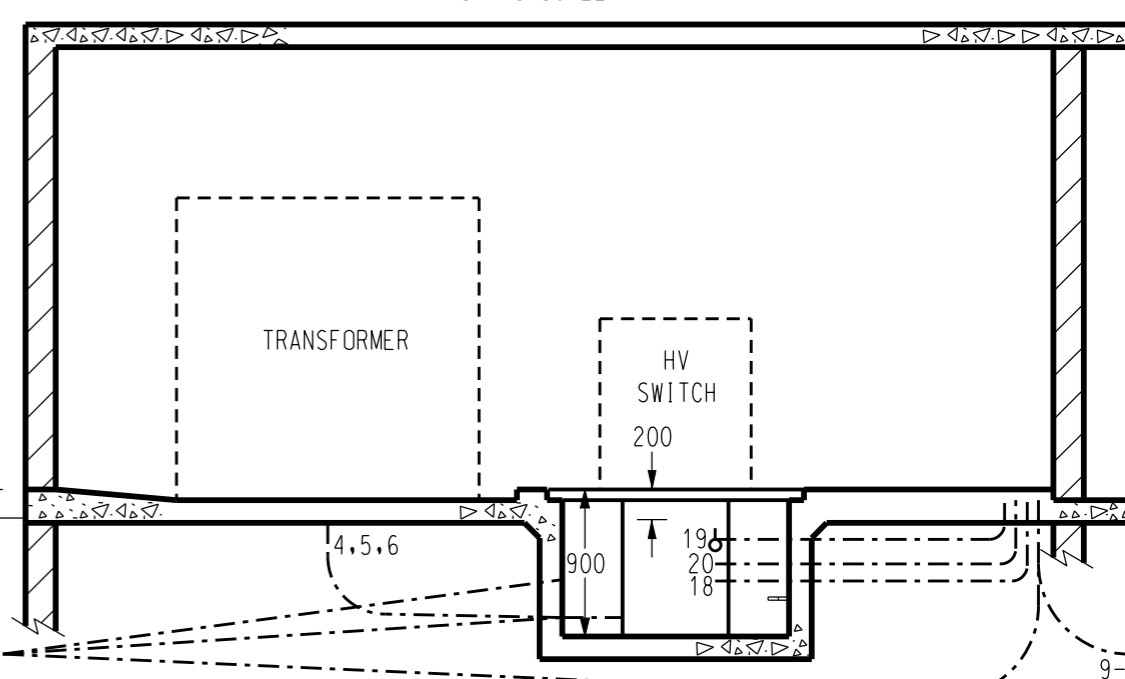
120 MIN 190 MAX
STEP UP AT
PERSONNEL DOORS.
REFER NOTE 2

FOOTPATH LEVEL



SECTION D-D
(TYPICAL FOR TRANSFORMER LOUVRE DOORS)

NOT TO SCALE



SECTION B-B

NOT TO SCALE

NO	DESCRIPTION	DRN	DATE	CKD	APPD
1	NOTE 2 AMENDED	A.T.	NOV'13	B.C.	B.C.
AMENDMENTS					



DES	I.PURVES	POWER STANDARD DRAWING		
DRN	G.R./A.D.	THREE TRANSFORMER INDOOR SUBSTATION SURFACE CHAMBER - OPTION 3 CONSTRUCTION DETAILS SHEET 3 OF 3		
CKD	S.LEACH			
APPD	F.ROBSON			
SCALE	AS SHOWN			
ISSUED	MARCH '98	A3	DRAWING NUMBER	S02-2-7-44
ALL DIM.	IN mm			
DRAFTING STANDARD TO A.S.1100		CAD PRODUCT - DO NOT AMEND MANUALLY		AMDT