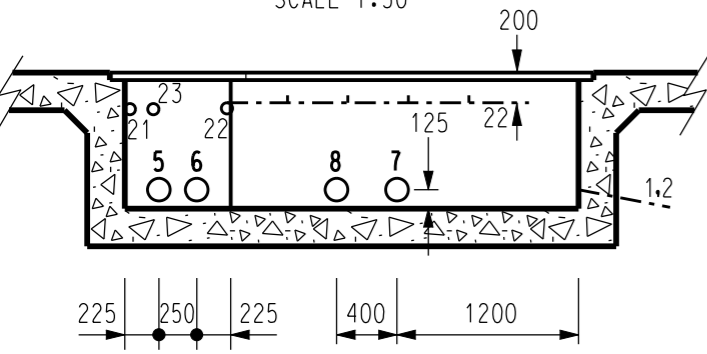
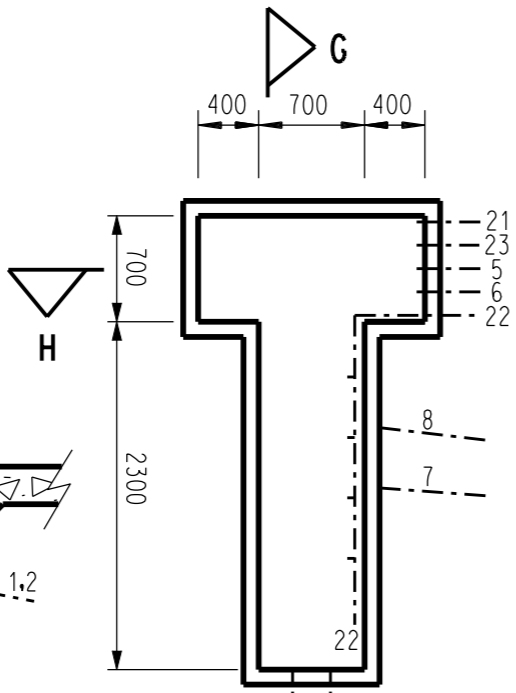


SECTION H-H
SCALE 1:50

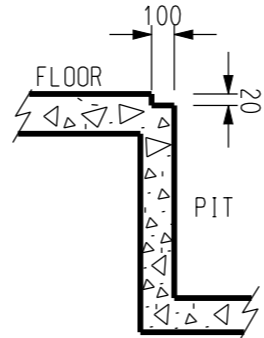
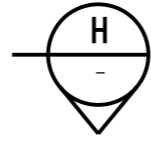


SECTION G-G
SCALE 1:50

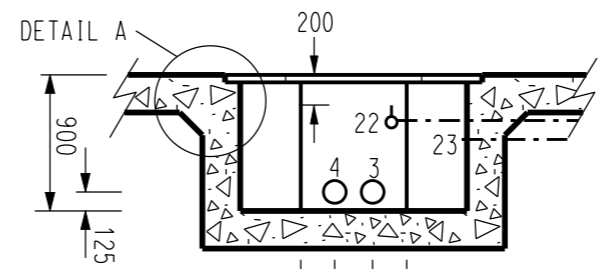
HV PIT-1 DETAILS



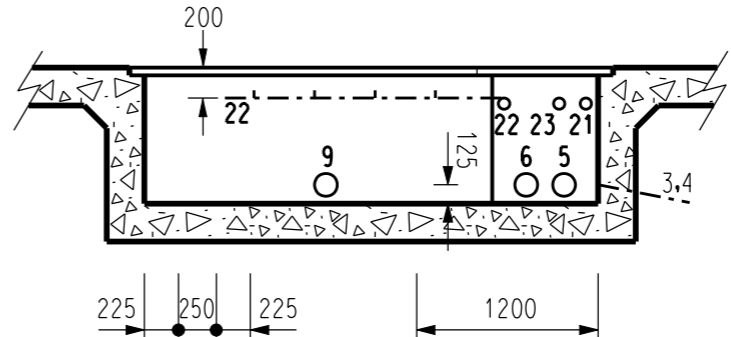
PLAN VIEW
SCALE 1:50



DETAIL - A
NOT TO SCALE

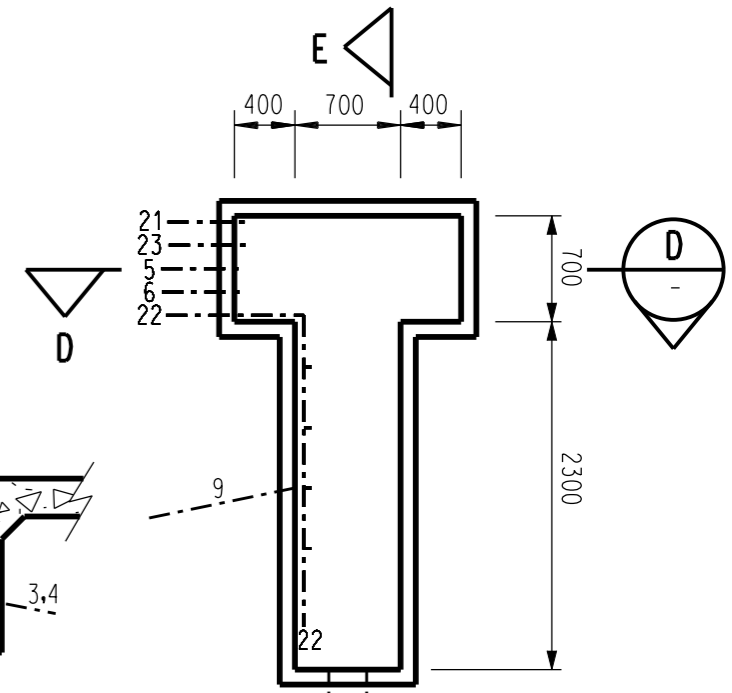


SECTION D-D
SCALE 1:50

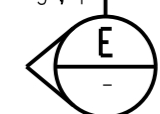


SECTION E-E
SCALE 1:50

HV PIT-2 DETAILS

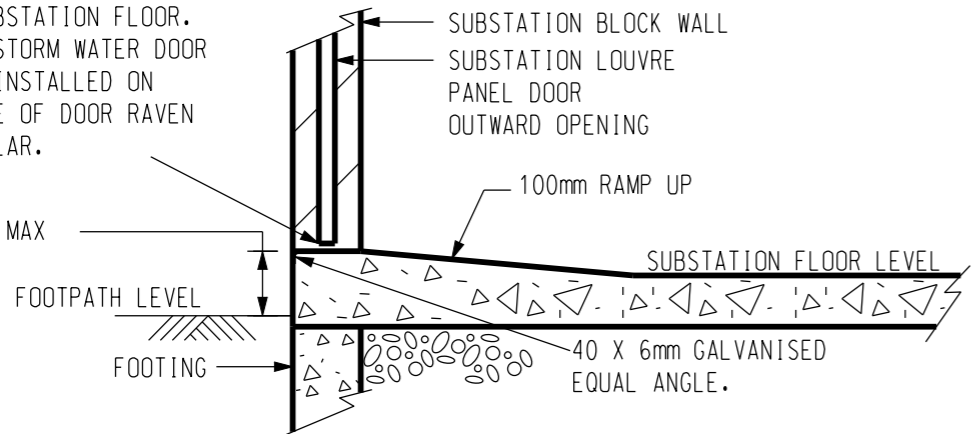


PLAN VIEW
SCALE 1:50



5mm MAX GAP BETWEEN LOUVRE DOOR AND SUBSTATION FLOOR. A SUITABLE STORM WATER DOOR SEAL TO BE INSTALLED ON OUTSIDE BASE OF DOOR RAVEN RP4 OR SIMILAR.

120 MIN 190 MAX



SECTION K-K
(TYPICAL FOR TRANSFORMER LOUVRE DOORS)
NOT TO SCALE

NOTES

1. ALL PERSONNEL DOORS ARE TO BE HUNG SO THAT THE CENTRELINE OF DOOR IS DIRECTLY OVER THE THRESHOLD, WITH A SUITABLE STORMWATER DOOR SEAL TO BE INSTALLED AT THE BASE OF THE DOOR, RAVEN RP4 OR SIMILAR.
2. ADDITIONAL STEPS (UP TO A MAXIMUM OF 3) INCLUDING AN APPROPRIATE HANDRAIL MAY BE PROVIDED AT ANY PERSONNEL DOORWAY. IF THE STEPS ARE TO BE LOCATED WITHIN THE SUBSTATION CHAMBERS, IT WILL BE NECESSARY TO EXTEND THE SUBSTATION CHAMBER TO ACCOMMODATE THE ENCROACHMENT OF THE STEPS, SUCH THAT THE INTERNAL DIMENSIONS OF THE SUBSTATION CHAMBER ARE NOT REDUCED.

NO	DESCRIPTION	DRN	DATE	CKD	APPD
1	NOTE 2 AMENDED	A.T.	NOV'13	B.C.	B.C.
AMENDMENTS					



DES	I.PURVES	POWER STANDARD DRAWING		
DRN	G.R./A.D.	INDOOR SUBSTATION THREE TRANSFORMER ARRANGEMENT SURFACE CHAMBER - OPTION 1 CONSTRUCTION DETAILS SHEET 4 OF 4		
CKD	S.LEACH			
APPD	F.ROBSON			
SCALE	AS SHOWN			
ISSUED	MARCH '98	A3	DRAWING NUMBER	S02-2-7-38
ALL DIM.	IN mm			
DRAFTING STANDARD TO A.S.1100		CAD PRODUCT - DO NOT AMEND MANUALLY		AMDT