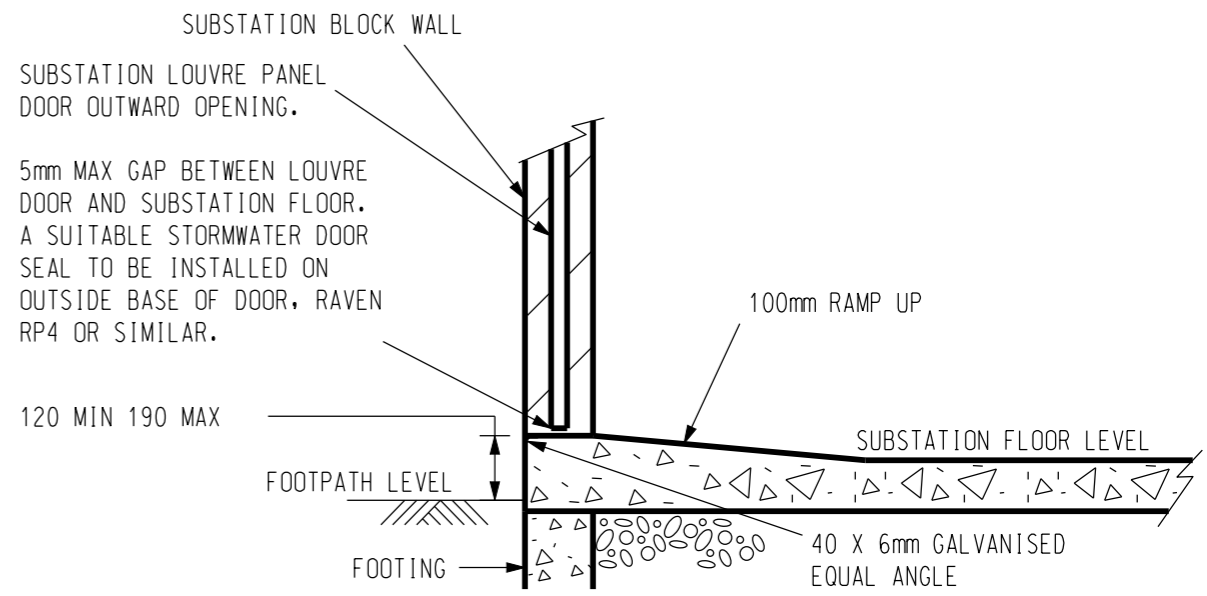


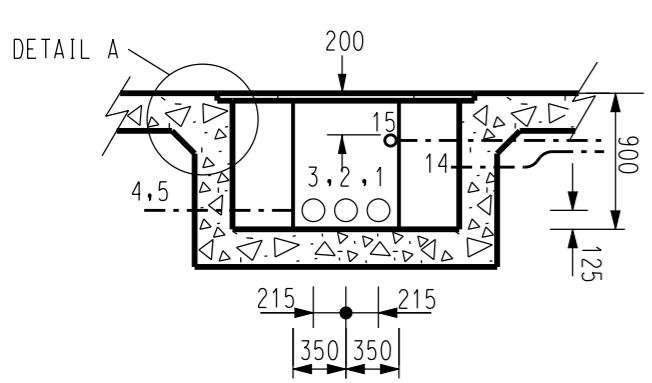
SECTION C-C
(TYPICAL FOR PERSONNEL DOORS)
NOT TO SCALE

NOTES

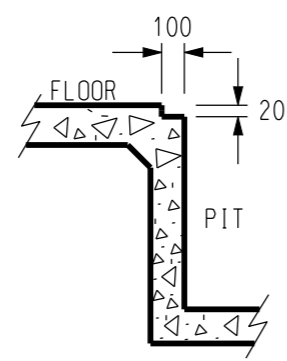
1. ALL PERSONNEL DOORS ARE TO BE HUNG SO THAT THE CENTRELINE OF DOOR IS DIRECTLY OVER THE THRESHOLD, WITH A SUITABLE STORMWATER DOOR SEAL TO BE INSTALLED AT THE BASE OF THE DOOR, RAVEN RP4 OR SIMILAR.
2. ADDITIONAL STEPS (UP TO A MAXIMUM OF 3) INCLUDING AN APPROPRIATE HANDRAIL MAY BE PROVIDED AT ANY PERSONNEL DOORWAY. IF THE STEPS ARE TO BE LOCATED WITHIN THE SUBSTATION CHAMBERS, IT WILL BE NECESSARY TO EXTEND THE SUBSTATION CHAMBER TO ACCOMMODATE THE ENCROACHMENT OF THE STEPS, SUCH THAT THE INTERNAL DIMENSIONS OF THE SUBSTATION CHAMBER ARE NOT REDUCED.



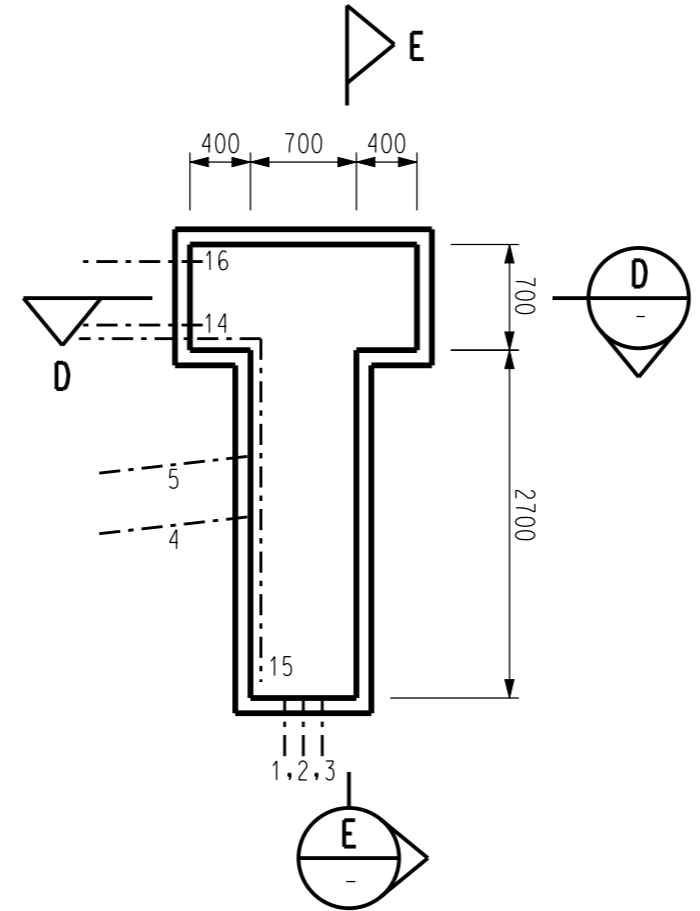
SECTION F-F
(TYPICAL FOR TRANSFORMER LOUVRE DOORS)
NOT TO SCALE



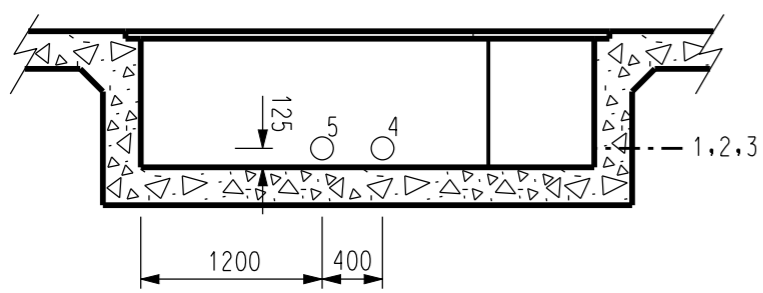
SECTION D-D
SCALE 1:50



DETAIL - A
NOT TO SCALE



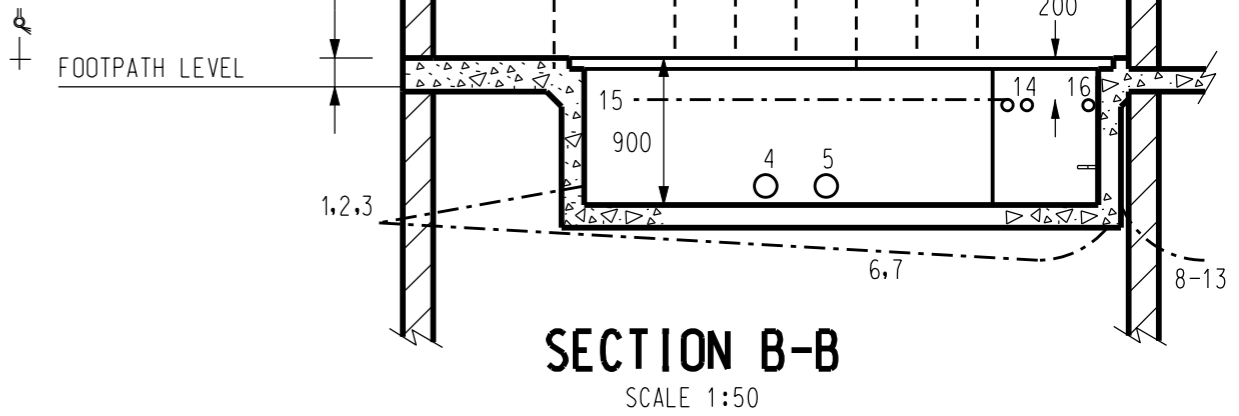
PLAN VIEW
SCALE 1:50



SECTION E-E
SCALE 1:50

H.V PIT DETAILS

120 MIN 190 MAX
STEP UP AT PERSONNEL
DOORS REFER NOTE 2



SECTION B-B
SCALE 1:50

NO	DESCRIPTION	DRN	DATE	CKD	APPD
3	NOTE 2 AMENDED	A.T.	NOV'13	B.C.	B.C.
2	PLAN VIEW REDRAWN TO SCALE	K.I.	SEPT'06	R.S.	S.C.
1	CHANGE DIM ON PLAN VIEW TO 2700 UPDATE LOGO	K.I.	MAR '05	C.C.	C.C.
AMENDMENTS					



DES	I.PURVES	POWER STANDARD DRAWING	
DRN	G.R./A.D.	INDOOR SUBSTATION	
CKD	S.LEACH	TWO TRANSFORMER ARRANGEMENT	
APPD	F.ROBSON	SURFACE CHAMBER - OPTION 1	
SCALE	AS SHOWN	CONSTRUCTION DETAILS SHEET 3 OF 3	
ISSUED	MARCH '98	A3	DRAWING NUMBER S2-2-7-27
ALL DIM. IN mm			
DRAFTING STANDARD TO AS 1100		CAD PRODUCT - DO NOT AMEND MANUALLY	