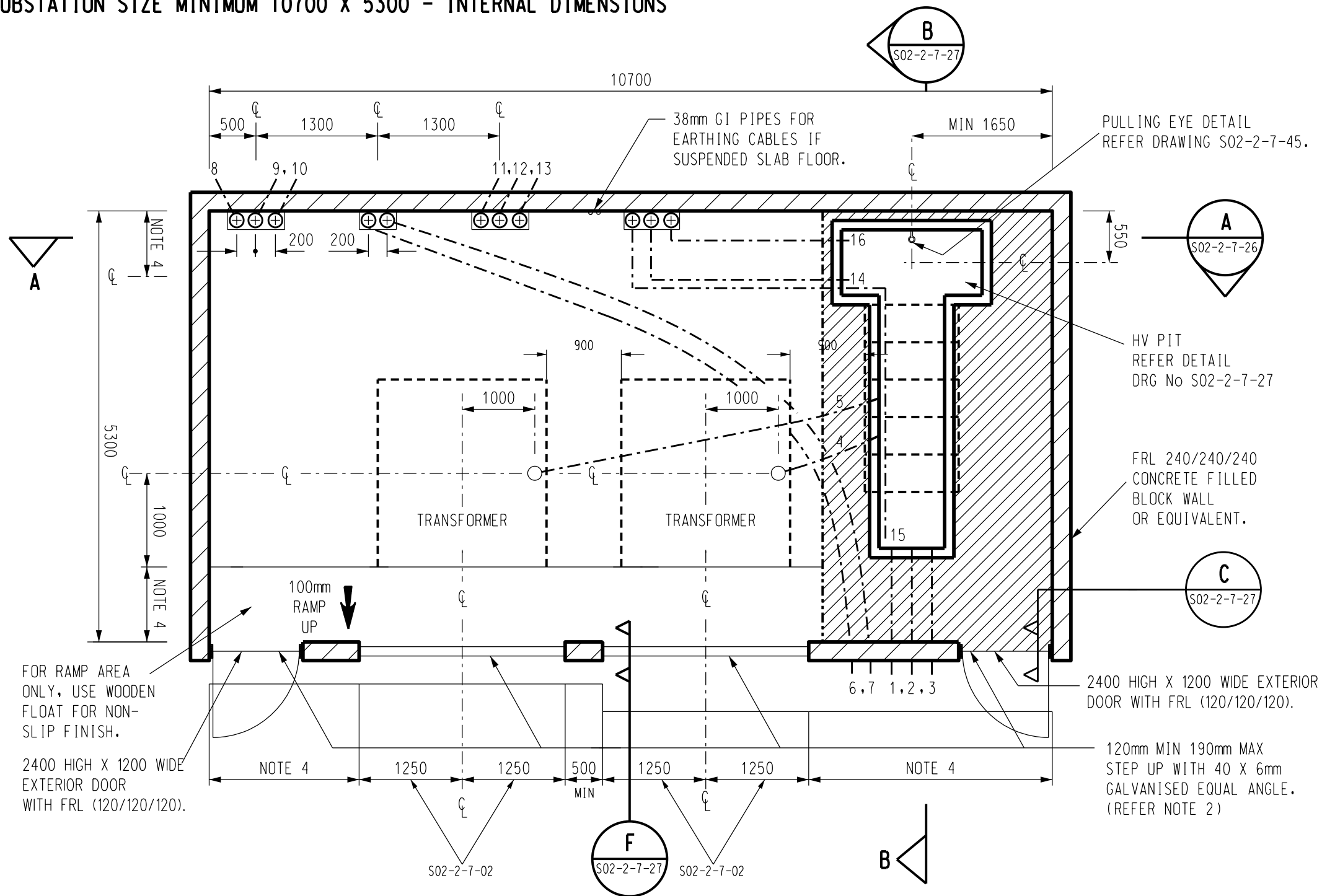


**TWO TRANSFORMER SUBSTATION**  
**SUBSTATION SIZE MINIMUM 10700 X 5300 - INTERNAL DIMENSIONS**



**PLAN VIEW**

**NOTE**

1. SUBSTATION PLAN CAN BE MIRROR IMAGED TO SUIT THE CONSUMERS' BUILDING LAYOUT.
2. ADDITIONAL STEPS (UP TO A MAXIMUM OF 3) INCLUDING AN APPROPRIATE HANDRAIL MAY BE PROVIDED AT ANY PERSONNEL DOORWAY. IF THE STEPS ARE TO BE LOCATED WITHIN THE SUBSTATION CHAMBER, IT WILL BE NECESSARY TO EXTEND THE SUBSTATION CHAMBER TO ACCOMMODATE THE ENCROACHMENT OF THE STEPS, SUCH THAT THE INTERNAL DIMENSIONS OF THE SUBSTATION CHAMBER ARE NOT REDUCED.
3. RAISED FLOOR AREA TO BE 150mm BEYOND OUTSIDE EDGE OF PIT.
4. SUBSTATION DIMENSIONS WILL VARY DEPENDING ON THE LOCATION IN WHICH EQUIPMENT IS INSTALLED. THROUGH OUT THE SUBSTATION CHAMBER A MINIMUM OF 1000mm CLEAR OPENING SHALL BE PROVIDED FROM ANY STRUCTURE TO EQUIPMENT AND A MINIMUM OF 900mm BETWEEN EQUIPMENT.

|  |            |
|--|------------|
| INDOOR SUBSTATION EARTHING LAYOUT  | S02-2-7-46 |
| INDOOR SUBSTATION SURFACE CHAMBER CABLE TRAY DETAILS   | S02-2-7-49 |
| INDOOR SUBSTATION SURFACE CHAMBER LOUVRED DOOR DETAILS   | S02-2-7-02 |
| INDOOR SUBSTATION SURFACE CHAMBER CONSTRUCTION NOTES   | S02-2-7-00 |
| TWO TRANSFORMER INDOOR SUBSTATION SURFACE CHAMBER - OPTION 1 CONSTRUCTION DETAILS SHEET 2 OF 3 | S02-2-7-26 |
| TWO TRANSFORMER INDOOR SUBSTATION SURFACE CHAMBER - OPTION 1 CONSTRUCTION DETAILS SHEET 3 OF 3 | S02-2-7-27 |
| REFERENCE DRAWING  | DRWG. No.  |

| No.   | DIA. mm | MAT       | BEND RAD. | REMARKS                    |
|-------|---------|-----------|-----------|----------------------------|
| 16    | 50      | CAT.A PVC |           | CONTROL CABLES             |
| 14,15 | 50,65   | CAT.A PVC |           | HV SW/GR EARTH, HV HEATERS |
| 8-13  | 150     | CAT.A PVC | 1200      | LV TO CONSUMER             |
| 6,7   | 150     | CAT.A PVC | 1200      | LV TO STREET NETWORK       |
| 4,5   | 150     | CAT.A PVC | 760       | HV TO TRANSFORMER          |
| 1,2,3 | 150     | CAT.A PVC | 1200      | HV FEEDERS                 |

**CONDUIT SCHEDULE**

| NO | DESCRIPTION  | DRN  | DATE   | CKD  | APPD |
|----|--|------|--------|------|------|
| 3  | DIMENSIONS AMENDED   | A.B. | JAN'17 | I.B. | B.C. |
| 2  | DIMENSIONS AMENDED AND NOTE 4 ADDED DRAWINGS S02-2-7-22 AND S02-2-7-23 REPLACED WITH S02-2-7-00. DOORS UPDATED | C.C. | JUN'14 | A.T. | B.C. |
| 1  | CONDUIT MATERIAL UPDATED   | J.C. | OCT'09 | A.T. | S.C. |

**AMENDMENTS**



|                               |           |   |                           |
|-------------------------------|-----------|---|---------------------------|
| DES                           | I.PURVES  | POWER STANDARD DRAWING  |                           |
| DRN                           | G.R./A.D. | <b>INDOOR SUBSTATION TWO TRANSFORMER ARRANGEMENT SURFACE CHAMBER - OPTION 1 CONSTRUCTION DETAILS SHEET 1 OF 3</b> |                           |
| CKD                           | S.LEACH   | A3  | DRAWING NUMBER S02-2-7-25 |
| APPD                          | F.ROBSON  |   |                           |
| SCALE                         | N.T.S.    |   |                           |
| ISSUED                        | MARCH '98 |   |                           |
| ALL DIM. IN mm                |           |   |                           |
| DRAFTING STANDARD TO A.S.1100 |           | CAD PRODUCT - DO NOT AMEND MANUALLY   |                           |

