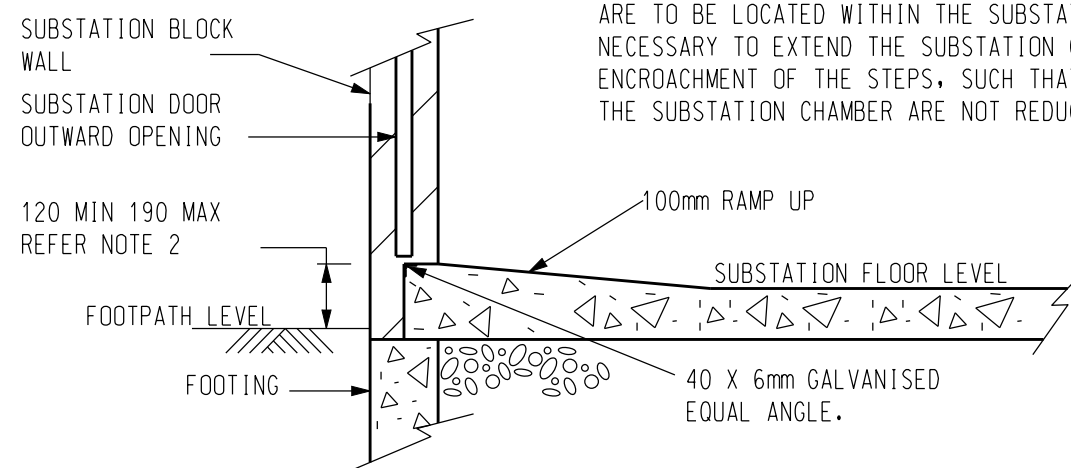


SECTION E-E (TYPICAL FOR TRANSFORMER LOUVRE DOORS)

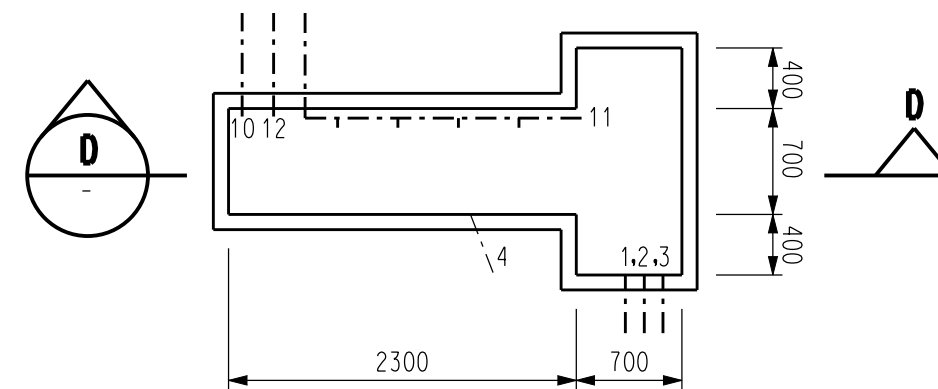
NOT TO SCALE

NOTES

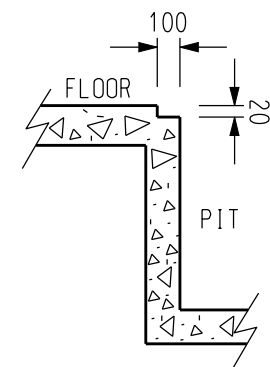
1. ALL PERSONNEL DOORS ARE TO BE HUNG SO THAT THE CENTRELINE OF DOOR IS DIRECTLY OVER THE THRESHOLD.
2. ADDITIONAL STEPS (UP TO A MAXIMUM OF 3) INCLUDING AN APPROPRIATE HANDRAIL MAY BE PROVIDED AT ANY PERSONNEL DOORWAY. IF THE STEPS ARE TO BE LOCATED WITHIN THE SUBSTATION CHAMBERS, IT WILL BE NECESSARY TO EXTEND THE SUBSTATION CHAMBER TO ACCOMMODATE THE ENCROACHMENT OF THE STEPS, SUCH THAT THE INTERNAL DIMENSIONS OF THE SUBSTATION CHAMBER ARE NOT REDUCED.



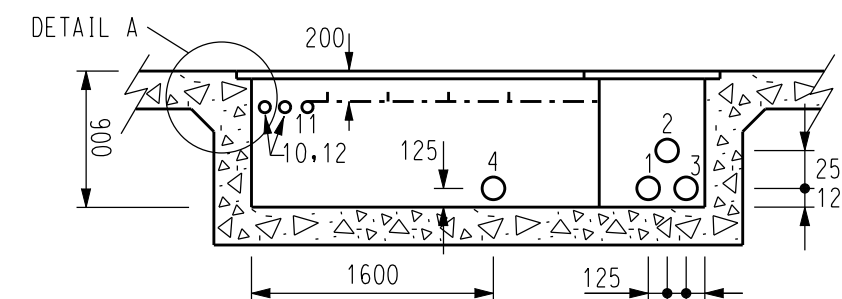
SECTION C-C (TYPICAL FOR PERSONNEL DOORS)



**PLAN VIEW
SCALE 1:50**



**DETAIL - A
NOT TO SCALE**



**SECTION D-D
SCALE 1:50**

HV PIT DETAILS

NO	DESCRIPTION	DRN	DATE	CKD	APPD
1	NOTE 2 AMENDED	C.C.	NOV'13	A.T.	B.C.
AMENDMENTS					



DES	I.PURVES	POWER STANDARD DRAWING		
DRN	G.R./A.D.	INDOOR SUBSTATION ONE TRANSFORMER ARRANGEMENT SURFACE CHAMBER - OPTION 2 CONSTRUCTION DETAILS SHEET 3 OF 3		
CKD	S.LEACH	A3	DRAWING NUMBER	S02-2-7-18
APPD	F.ROBSON			
SCALE	AS SHOWN			
ISSUED	MARCH'98			
ALL DIM. IN mm		CAD PRODUCT - DO NOT AMEND MANUALLY		
DRAFTING STANDARD TO A.S.1100		AMDT		