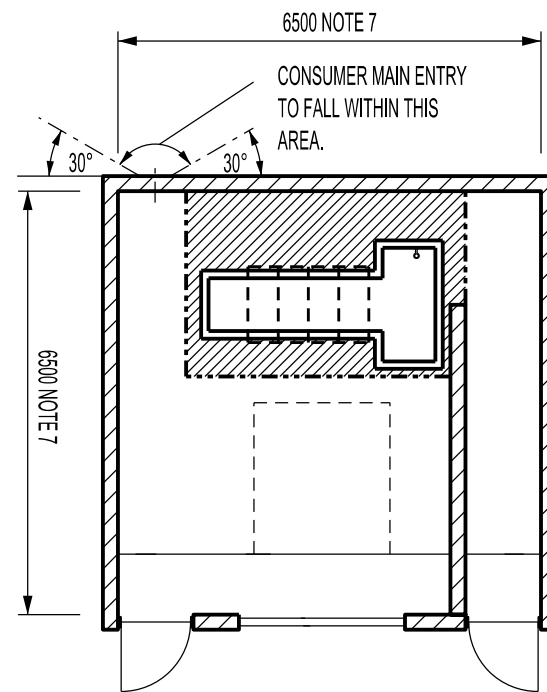


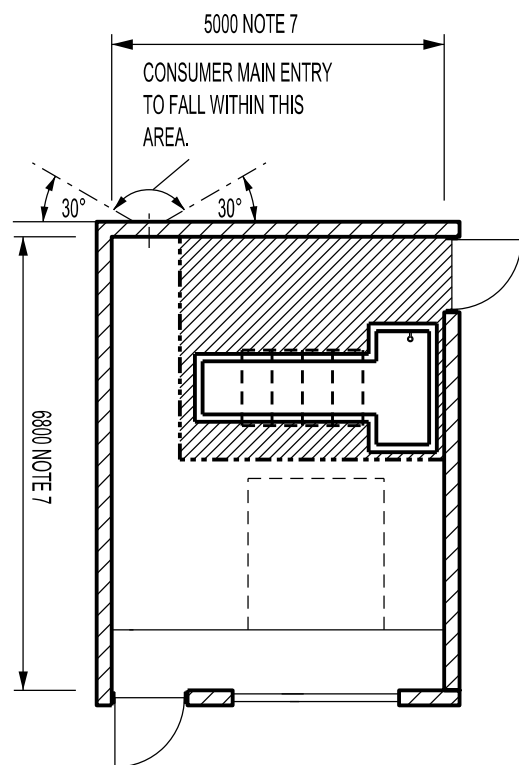
OPTION 1
SCALE 1:100

LEGEND

- RAISED FLOOR LINE
- ▨ RAISED FLOOR AREA

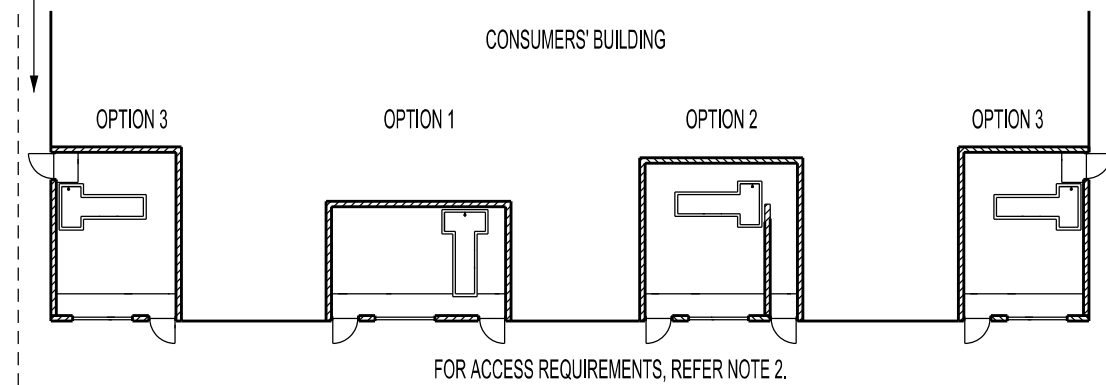


OPTION 2
SCALE 1:100



OPTION 3
SCALE 1:100

PERSONNEL ACCESS
1200 WIDE



KEY DIAGRAM - PLAN VIEW
SCALE 1:300

NOTE

1. PURPOSE OF OPTION PLAN
THIS DRAWING ILLUSTRATES THE RANGE OF OPTIONS AVAILABLE FOR THIS TYPE OF SUBSTATION. ALL SUBSTATION PLANS CAN BE MIRROR-IMAGED TO SUIT THE CONSUMERS' BUILDING LAYOUT. REFERENCE SHOULD BE MADE TO THE DRAWINGS LISTED BELOW FOR CONSTRUCTION DETAILS AND TO THE PUBLICATION "ELECTRICITY SUPPLY TO LARGE CUSTOMERS" FOR ADDITIONAL INFORMATION.
2. ACCESS
UNLESS THE CHAMBER FRONTS ONTO THE STREET, AN ACCESS ROAD FOR HEAVY VEHICLES IS REQUIRED FROM THE STREET TO THE FRONT OF THE SUBSTATION CHAMBER. REFER TO THE PUBLICATION "ELECTRICITY SUPPLY TO LARGE CUSTOMERS" FOR ACCESS REQUIREMENTS.
3. SITE
THE GROUND BENEATH THE SUBSTATION IS REQUIRED TO ACCOMMODATE EARTHING ELECTRODES. IT MUST BE FREE OF ALL OBSTRUCTIONS, INCLUDING SEWERS, PIPES AND UNDERGROUND CONSTRUCTION.
4. STEPS
UP TO 3 STEPS, INCLUDING AN APPROPRIATE HANDRAIL MAY BE PROVIDED AT ANY PERSONNEL DOOR. IF STEPS ARE TO BE LOCATED WITHIN THE SUBSTATION CHAMBER, IT WILL BE NECESSARY TO EXTEND THE SUBSTATION CHAMBER TO ACCOMMODATE THE ENCROACHMENT OF THE STEPS SUCH THAT THE INTERNAL DIMENSIONS.
5. SUBSTATION HEADROOM - 3000mm MINIMUM
6. DEPTH OF HV PIT - 900mm OF THE SUBSTATION CHAMBER ARE NOT REDUCED.
7. SUBSTATION DIMENSIONS WILL VARY DEPENDING ON THE LOCATION IN WHICH EQUIPMENT IS INSTALLED. THROUGHOUT THE SUBSTATION CHAMBER A MINIMUM OF 1000mm CLEAR OPENING SHALL BE PROVIDED FROM ANY STRUCTURE TO EQUIPMENT AND MINIMUM OF 900mm BETWEEN EQUIPMENT.

INTERNAL FITOUT DETAILS	S02-2-7-50 S02-2-7-51
INDOOR SUBSTATION SURFACE CHAMBERS CONSTRUCTION NOTES	S02-2-7-00
ONE TRANSFORMER INDOOR SUBSTATION SURFACE CHAMBER - OPTION 3 CONSTRUCTION DETAILS	S02-2-7-19 S02-2-7-20 S02-2-7-21
ONE TRANSFORMER INDOOR SUBSTATION SURFACE CHAMBER - OPTION 2 CONSTRUCTION DETAILS	S02-2-7-16 S02-2-7-17 S02-2-7-18
ONE TRANSFORMER INDOOR SUBSTATION SURFACE CHAMBER - OPTION 1 CONSTRUCTION DETAILS	S02-2-7-13 S02-2-7-14 S02-2-7-15
REFERENCE DRAWING	DRWG. No.

NO	DESCRIPTION	DRN	DATE	CKD	APPD
3	NOTE 7 AMENDED	A.B.	JAN'17	I.B.	B.C.
2	REFERENCE DRAWING NUMBERS UPDATED	K.T.	APR'16	I.B.	B.C.
1	NOTE 7 ADDED DRAWINGS S02-2-7-22 AND S02-2-7-23 REPLACED WITH S02-2-7-00	C.M.	DEC'13	A.T.	B.C.
AMENDMENTS					

DES I.PURVES		POWER STANDARD DRAWING	
DRN G.R./A.D.		INDOOR SUBSTATION	
CKD S.LEACH		ONE TRANSFORMER ARRANGEMENT	
APPD F.ROBSON		SURFACE CHAMBER	
SCALE		LAYOUT OPTIONS PLAN	
ISSUED MARCH'98		A3	DRAWING NUMBER S02-2-7-12
ALL DIM. IN mm			
DRAFTING STANDARD TO AS 1100		CAD PRODUCT - DO NOT AMEND MANUALLY	

