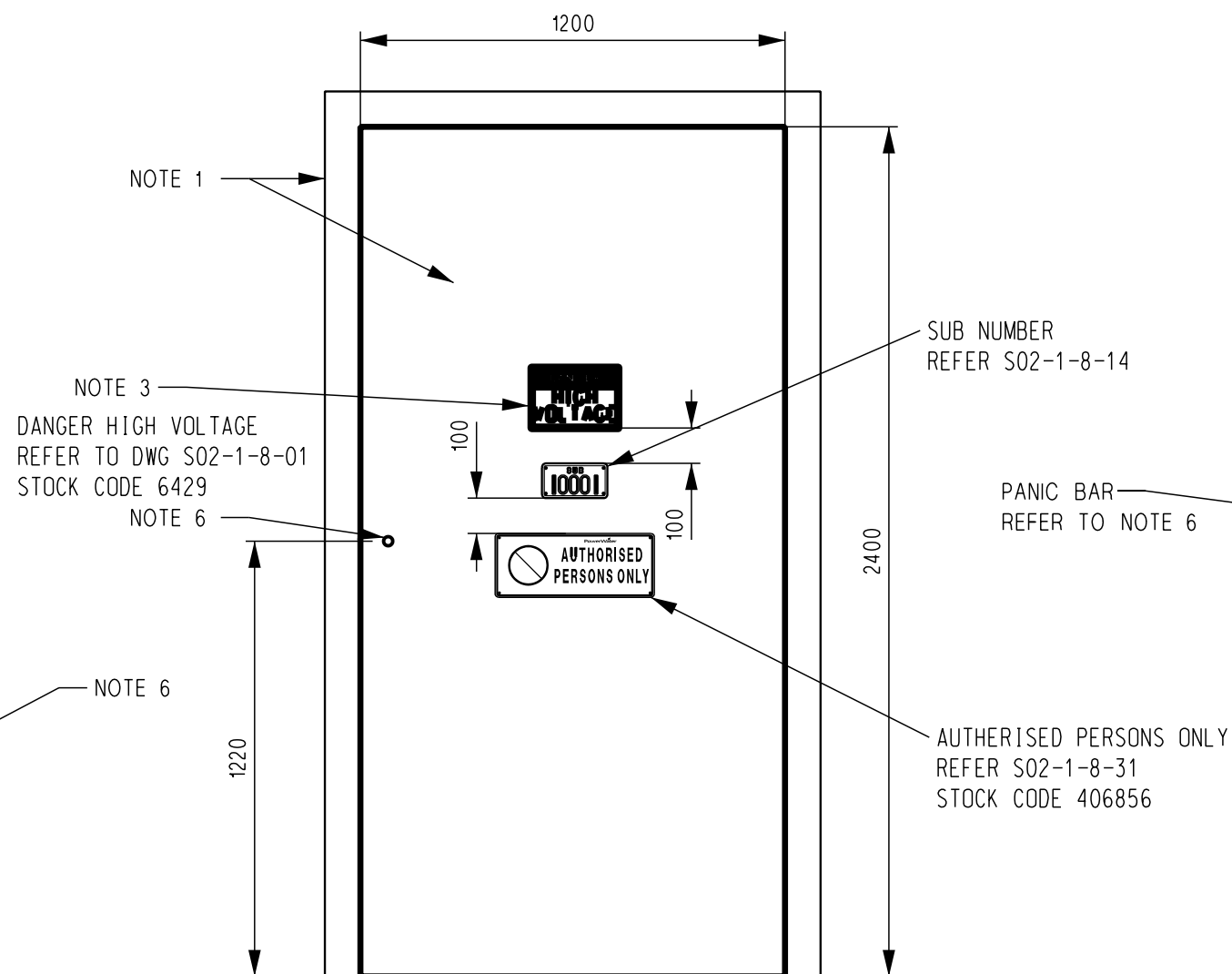
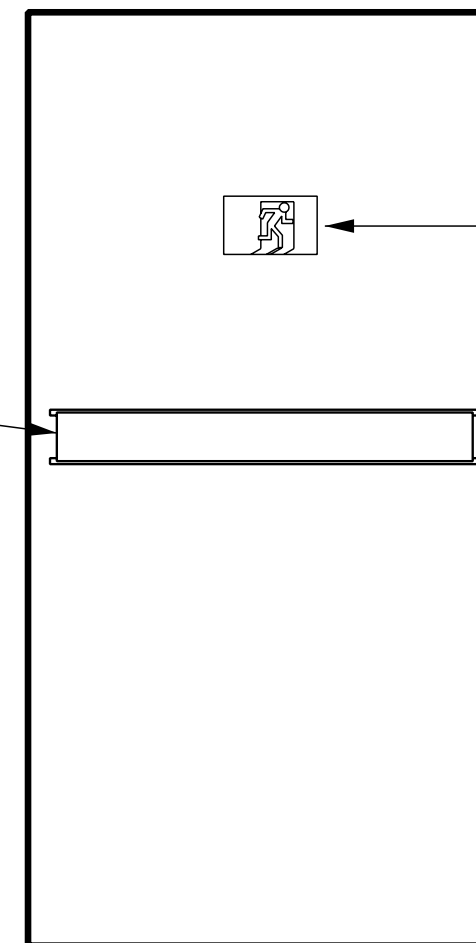


DETAIL 'A'



DETAIL A  
FRONT DOOR SIGN



DETAIL A  
INSIDE FACE OF PERSONNEL DOOR

REFER TO DWG  
S02-1-8-09.  
STOCK CODE 501207

SUB NUMBER  
REFER S02-1-8-14

PANIC BAR  
REFER TO NOTE 6

AUTHORISED PERSONS ONLY  
REFER S02-1-8-31  
STOCK CODE 406856

**NOTES:**

1. DOOR TO BE SOLID CORE EXTERIOR, SET IN A STEEL FRAME.
2. DOORS TO BE PAINTED BY BUILDER, COLOUR TO SUIT BUILDING.
3. ALL SIGNS TO BE INSTALLED BY CONTRACTOR/DEVELOPER.
4. THE ESCAPE PASSAGE MAY BE DELETED UNDER CERTAIN CIRCUMSTANCES - POWER AND WATER REQUIREMENTS WILL BE DISCUSSED AT THE DESIGN STAGE.
5. OPENING IN BLOCK WORK TO SUIT STEEL FRAME DOOR.
6. PERSONAL DOOR LOCK ARRANGMENTS REFER DWG S02-2-7-00.
7. PERSONNEL ACCESS DOORS SHALL ACHIEVE A MINIMUM FRL OF 2 HOURS.
8. SHALL COMPLY WITH BCA FIRE RESISTANT CONSTRUCTION, FIRE SEGREGATION REQUIREMENTS AS WELL AS VERIFIED AND TAGGED BY A CERTIFIED AUDITOR.
9. ALL SIGNAGE SHALL BE INSTALLED ON BOTH DOORS EXCEPT FOR THE SUBSTATION NUMBER WHICH SHALL BE INSTALLED ON THE MOST VISIBLE DOOR.
10. A 75mm WEATHER SHIELD SHALL OVERHANG THE TOP OF ALL EXTERIOR DOORWAYS.

NO	DESCRIPTION	DRN	DATE	CKD	APPD
9	NOTE 6 AMENDED	K.T.	JUN'16	A.T.	B.C.
8	DOOR DIMENSIONS AMENDED, NOTES 7, 8, 9, 10 ADDED, NOTE 6 AMENDED	A.T.	JUN'14	B.C.	B.C.
7	DANGER SIGNS STOCK CODE UPDATED, SIGNAGE ADDED TO OUTER DOOR, EXIT SIGN STOCK CODES UPDATED	A.T.	MAR'13	B.C.	B.C.
6	DANGER SIGNS UPDATED TO NEW LOGO, EXIT SIGNS ADDED	K.I.	02/05	R.C.	C.C.
5	NOTE 6 ADDED	..	09/90	..	..
4	TRENCH LAYOUT AMENDED	..	03/90	..	..
3	REDRAWN. TITLE & DRG NUMBER CHANGED. NOTES ALTERED DOOR MEASUREMENTS ADDED	..	11/88	..	..



DES	...	POWER STANDARD DRAWING		
DRN	R.L.F	<b>INDOOR SUBSTATION DOOR EMERGENCY EXIT</b>		
CKD	...			
APPD	B.KENT			
SCALE	N.T.S.			
ISSUED	28/11/88	A3	DRAWING NUMBER	S02-2-7-04
ALL DIM. IN	mm			
DRAFTING STANDARD TO A.S.1100		CAD PRODUCT - DO NOT AMEND MANUALLY		AMD T

