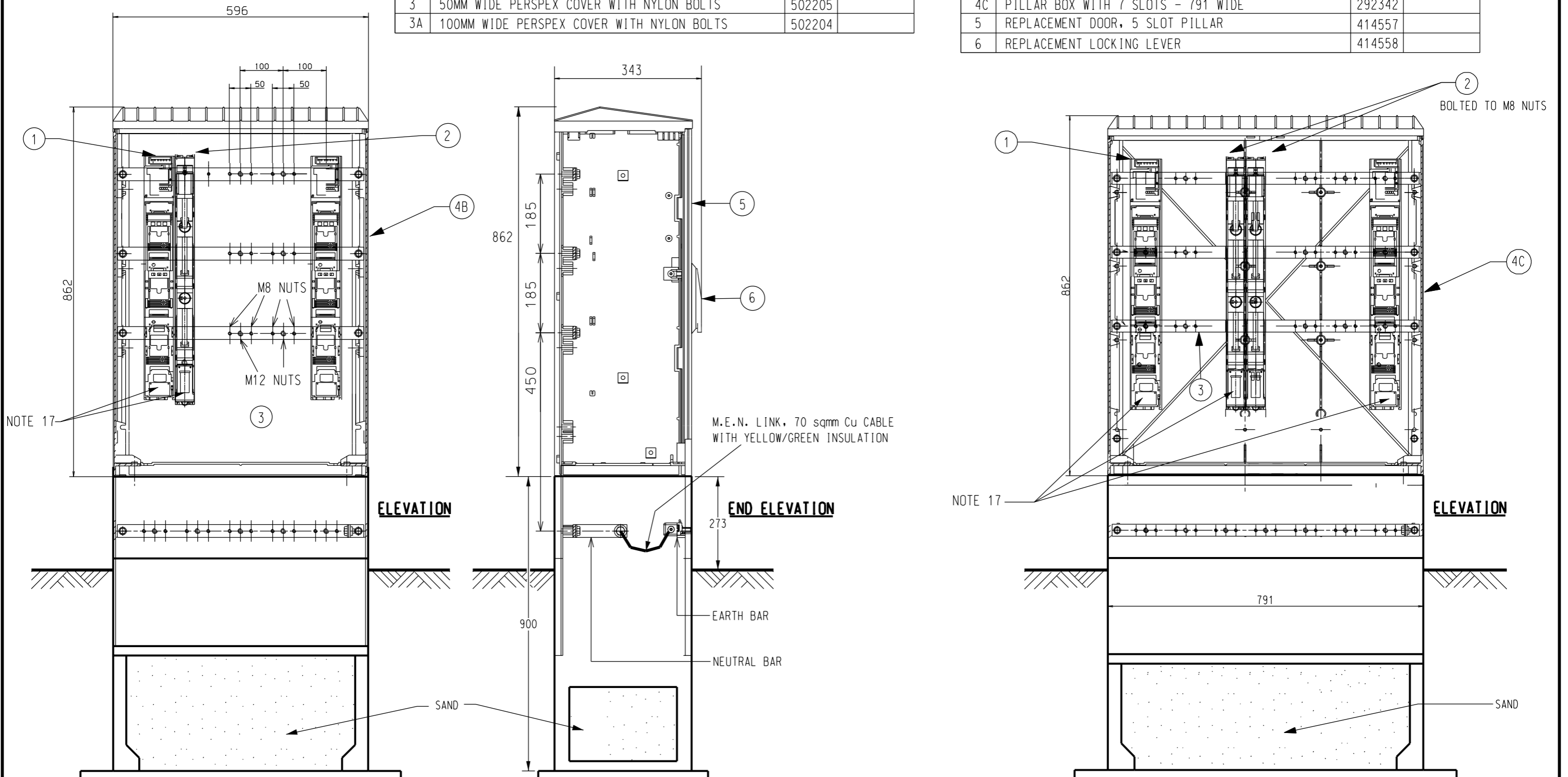


	ITEM	S/C	DRG No
1	FUSE SWITCH BASE 630A	11866	S02-1-4-8
2	FUSE SWITCH BASE 160A	407050	S02-1-4-18
3	50MM WIDE PERSPEX COVER WITH NYLON BOLTS	502205	
3A	100MM WIDE PERSPEX COVER WITH NYLON BOLTS	502204	

	ITEM	S/C	DRG No
4A	PILLAR BOX WITH 3 SLOTS - 396 WIDE	292326	
4B	PILLAR BOX WITH 5 SLOTS - 596 WIDE	292334	
4C	PILLAR BOX WITH 7 SLOTS - 791 WIDE	292342	
5	REPLACEMENT DOOR, 5 SLOT PILLAR	414557	
6	REPLACEMENT LOCKING LEVER	414558	



NO	DESCRIPTION	DRN	DATE	CKD	APPD
8	ITEMS 3 AND 3A ADDED	A.T.	APR'14	B.C.	B.C.
7	ITEMS 5 AND 6 ADDED	A.T.	SEP'11	B.C.	S.C.
6	NOTES MOVED TO SHEET 2, 7 SLOT PILLAR ADDED	C.M.	FEB'10	B.C.	S.C.
5	NOTE 5 ADDED	J.C.	JUN'09	B.C.	S.C.
4	STOCK CODES CHANGED	J.C.	NOV'08	B.C.	S.C.
3	DIMENSIONS ADDED	J.C.	FEB'08	B.C.	S.C.



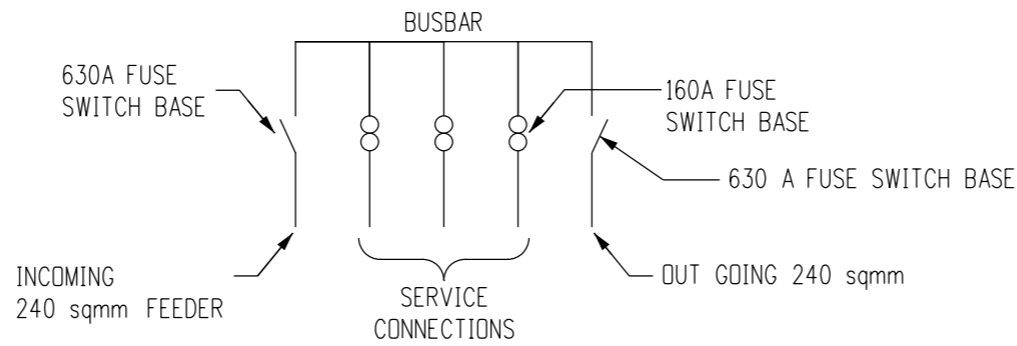
DES	-	POWER STANDARD DRAWING	
DRN	R. INNES	STRIPLE FUSE PILLAR FRONT OPENING SHEET 1 OF 2	
CKD	-		
APPD	F. ROBSON		
SCALE	NO SCALE	A3	DRAWING NUMBER S02-2-3-08
ISSUED	APR'01		
ALL DIM. IN mm		CAD PRODUCT - DO NOT AMEND MANUALLY	
DRAFTING STANDARD TO A.S.1100			

NOTES

1. FUSE PILLARS CONSTRUCTED FROM IMPACT RESISTANT, GLASS-FIBRE REINFORCED POLYESTER. EXTRA COATING FOR UV PROTECTION REQUIRED.
2. PADLOCK HASP AND STAPLE PREFERRED.
3. 630A BUS BARS REQUIRED FOR ALL ACTIVE PHASE, NEUTRAL BUS BAR AND EARTH BUS BAR.
4. FOR CONSUMER CONNECTIONS 100 AMP, DIN SIZE 00 STRIPLE FUSES (STOCK CODE 286237) TO BE INSTALLED IN 160AMP STRIPLE FUSE SWITCH BASE
5. ALL BOLT HOLES SHALL HAVE CAPTIVE NUTS FITTED.
6. 630 AMP FUSE SWITCH BASES SHALL BE INSTALLED TO BOTH SIDES OF ACTIVE BUS BARS AND SHALL FITTED WITH SOLID LINKS. (S/C 213116).
7. BUS BAR EXTENSION TO BE USED IF EXTRA NEUTRAL CONNECTION POINTS ARE REQUIRED. REFER ITEM A, FOR BUS BAR EXTENSION.
8. BUS BAR PHASE SEQUENCE, FROM TOP TO BOTTOM, IS RED, WHITE, BLUE, NEUTRAL.
9. IF A NON-OPEN POINT FUSED TERMINATION PILLAR IS SUPPLYING A MAXIMUM OF 1 CUSTOMER PER PHASE, THE INCOMING FEEDER CAN BE A 0.6/1kV/25 sq mm /Cu/XLPE/NYLON/PVC CABLE. OTHERWISE IT SHALL BE THE STANDARD POWER AND WATER LOW VOLTAGE 240 sq mm AL XLPE CABLE.
10. ALL EXPOSED ACTIVE BUS BARS SHALL BE COVERED WITH PERPLEX SHEETING ATTACHED WITH NYLON BOLTS.
11. NEUTRAL AND EARTH BUS BARS SHALL BE THE SAME SIZE AS THE ACTIVE PHASE BUS BARS.
12. REFER TO DRAWINGS S02-2-3-12 FOR STRIPLE FUSE PILLAR EASEMENT DETAILS.
13. ALL CABLES SHALL HAVE THEIR FULL DESTINATION OR LOT TAGGED ON THE CABLE, INCLUDING NEUTRAL, WITH CROTCHETY K-TYPE TAGS SECURED TO THE CABLE WITH NYLON CABLE TIES. PHASING AND LOT DESTINATION SHALL BE LABELLED ONTO THE BASE OF THE 160AMP FUSE SWITCH BASE. E.G. R:L1234, W:L1235, B:L1236 USING BRADY BMP71 PRINTER, BLACK INK (S/C:502497) AND WHITE RIBBONS (S/C:502498)(BLACK-M71-R6000)
14. ALL ASSOCIATED EQUIPMENT WITHIN THE PILLAR SHALL BE SUPPLIED AND INSTALLED BY THE PROJECT DEVELOPER AND READY FOR FINAL CONNECTION BY PWC.
15. ALL FUSE PILLARS SHALL USE THE PWC 1-13 LOCKING SYSTEM.
16. REFER TO S02-2-2-10 FOR CABLE TERMINATION AND HEATSHRINK APPLICATION.

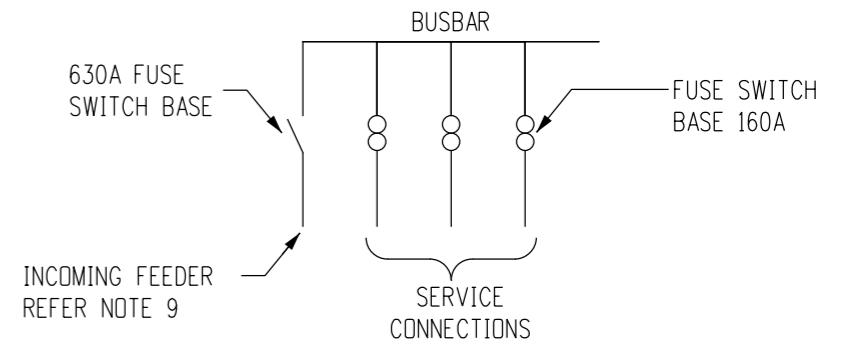
17. ALL CURRENT CARRYING BOLTED CONNECTIONS SHALL BE VIA CLASS 8.8 STAINLESS STEEL BOLTS TO THE FOLLOWING TORQUE SPECIFICATIONS:
 M8: 10-15NM
 M10: 30-35NM
 M12: 35-40NM
 ALL CONNECTIONS SHALL USE A SPRING WASHER BETWEEN A FLAT WASHER AND THE NUT. WHERE CAPTIVE NUTS ARE USED THE SPRING WASHER SHALL BE ON THE BOLT SIDE OF THE CONNECTION.
 ALL STAINLESS STEEL BOLTS REQUIRE A COATING OF ANTI-SEIZE BEFORE INSTALLATION. WHERE MULTIPLE BOLTS ARE USED TO MAKE A CONNECTION, DO NOT APPLY FULL TORQUE TO THE BOLTS ON THE FIRST PASS.

FUSED RESIDENTIAL PILLAR

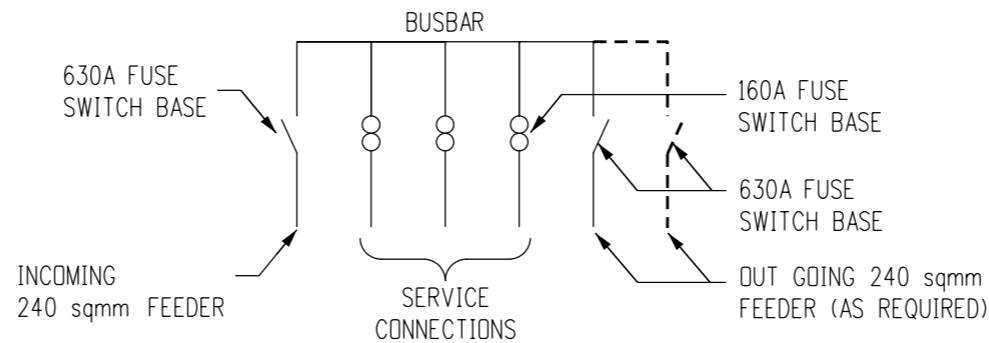


SINGLE LINE DIAGRAM

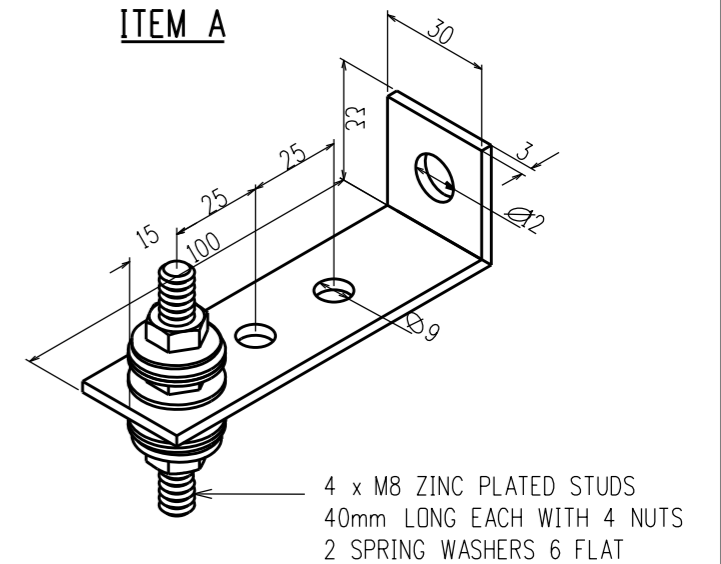
NON-OPEN POINT FUSED TERMINATION PILLAR



3 WAY/LINK/OPEN POINT FUSED PILLAR



ITEM A



11	NOTE 6, 13 AMENDED. SINGLE LINE DIAGRAM UPDATED	C.C.	APR'15	I.B.	B.C.
10	NOTE 13 UPDATED	A.T.	APR'14	B.C.	B.C.
9	NOTE 17 ADDED	C.C.	NOV'11	B.C.	S.C.
8	NOTE 16 ADDED	A.T.	SEP'11	B.C.	S.C.
7	NOTE 15 ADDED	C.C.	DEC'10	A.T.	S.C.
6	FUSE SIZE CHANGED	J.C.	JUN'10	B.C.	S.C.
NO	DESCRIPTION	DRN	DATE	CKD	APPD
AMENDMENTS					



DES	-	POWER STANDARD DRAWING			
DRN	R. INNES	STRIPLE FUSE PILLAR FRONT OPENING SHEET 2 OF 2			
CKD	-				
APPD	F. ROBSON				
SCALE	NO SCALE				
ISSUED	APR'01	A3	DRAWING NUMBER	S02-2-3-08_2	
ALL DIM. IN mm				AMDT	
DRAFTING STANDARD TO A.S.1100		CAD PRODUCT - DO NOT AMEND MANUALLY			