

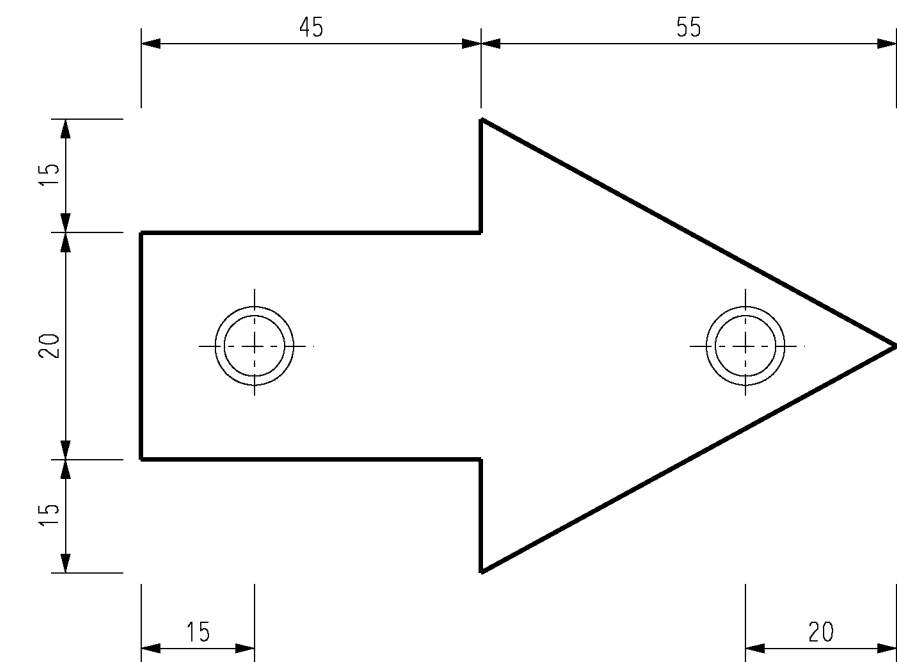
**NOTES:**

1. HOLES TO SUIT M6 COUNTERSUNK SCREWS.
2. MATERIAL TO BE 6mm ALUMINIUM.
3. LETTERING TO BE CONCAVE TO A DEPTH OF 2mm FILLED TO FLUSH WITH RED EPOXY.
4. 2 ARROWS TO BE SUPPLIED WITH EACH PLATE, POSITIONED TO SHOW CABLE DIRECTION.
5. CABLE ROUTE MARKER AND DIRECTIONAL ARROWS TO BE MOUNTED IN CONCRETE SLAB DIRECTLY OVER CABLES.
6. ARROWS TO INDICATE DIRECTION OF CABLES.

STOCK CODE 5066

ITEM 1 PLATE - (1 OFF)

ITEM 2 ARROWS - (2 OFF)



NO	DESCRIPTION	DRN	DATE	CKD	APPD
11	REDRAWN ON CAD AND "POWER and WATER" INSTEAD OF "PAWA"	A.S.	11/02		
10	TITLE AND DRAWING No. CHANGED	Q.L.J.	05/88		
9	REDRAWN AND REDESIGNED	W.T.	06/87		
AMENDMENTS					



DES	-	POWER STANDARD DRAWING		
DRN	W. TAYLOR	SIGNS DANGER MARKER - CABLE ROUTE		
CKD	-			
APPD	B.KENT	A3	DRAWING NUMBER	S2-1-8-4
SCALE	1 : 1.			
ISSUED	11.6.87	DRAWING NUMBER S2-1-8-4		
ALL DIM.	IN mm			
DRAFTING STANDARD TO A.S.1100		CAD PRODUCT - DO NOT AMEND MANUALLY		AMDT