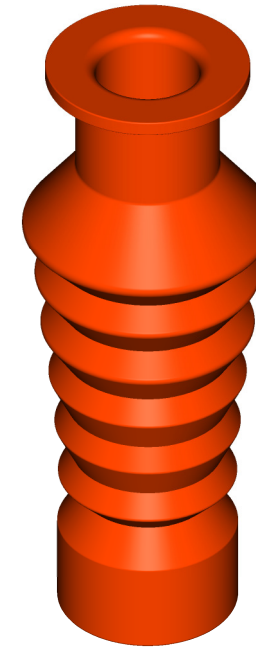


HEATSHRINK INSULATING BUSHING BOOT
(ITEMS 1,2,3,4,5)



ELASTOMERIC INSULATING BUSHING BOOT
(ITEM 6)

ITEM	TYPE	CABLE CROSS SECTION (mm ²)	BUSHING DIMENSION (mm)	TERMINATION	MAX SYSTEM VOLTAGE (KV)	ITEM NUMBER
1	HEATSHRINK INSULATING BUSHING BOOT	10-35	LENGTH 90-130	RIGHT ANGLE	17.5	3756
2	HEATSHRINK INSULATING BUSHING BOOT	50-95	LENGTH 60-90	RIGHT ANGLE	17.5	292177
3	HEATSHRINK INSULATING BUSHING BOOT	50-95	LENGTH 90-130	RIGHT ANGLE	17.5	3772
4	HEATSHRINK INSULATING BUSHING BOOT	120-300	LENGTH 90-130	RIGHT ANGLE	17.5	3780
5	HEATSHRINK INSULATING BUSHING BOOT	120-300	LENGTH 60-90	RIGHT ANGLE	17.5	292185
6	ELASTOMERIC INSULATING BUSHING BOOT	35-400	DIAMETER 46-70	INLINE OR RIGHT ANGLE	17.5	406928

							DES R S		POWER STANDARD DRAWING			
							DRN K. IBBOTT		INSULATING BUSHING BOOT			
							CKD PWC					
							APPD					
							SCALE N.T.S.					
							ISSUED JANUARY 2007		A3	DRAWING NUMBER	S02-1-2-19	3
							ALL DIM. IN mm					
x		x					DRAFTING STANDARD TO A.S.1100		CAD PRODUCT - DO NOT AMEND MANUALLY			AMDT
DRG NO	DESCRIPTION	NO	DESCRIPTION	DRN	DATE	CKD	APPD					
ASSOCIATED DRAWINGS		AMENDMENTS										
		3	INCLUDED HEATSHRINK INSULATED BUSHING BOOT	C.C.	DEC'18	B.V.	B.C.					
		2	DWG NUMBER CHANGED	J.C.	DEC'08	B.C.	S.C.					
		1	STOCK CODE ADDED. DRAWING No. CHANGED	A.S.	APR'07	R.S.	S.C.					
		0	ISSUED FOR CONSTRUCTION	K.I.	JAN'07	-	-					

