

ITEM 1

STANDARD CRIMP LUG

TECHNICAL DATA
 CONDUCTIVE MATERIALS
 COPPER
 OXYGEN CONTENT
 TENSILE STRENGTH
 TIN
 THICKNESS

99.95% pure
 30 PPM MAX
 200MPa
 99.9% PURE
 5-10 MICRONS

GENERAL ELECTRICAL PROPERTIES
 TOTAL CONDUCTIVITY
 TOTAL RESISTIVITY

99.9% IACS
 1.738 micro-ohm cm

CONFORMANT TO AUSTRALIAN STANDARD
 AS 4325.1

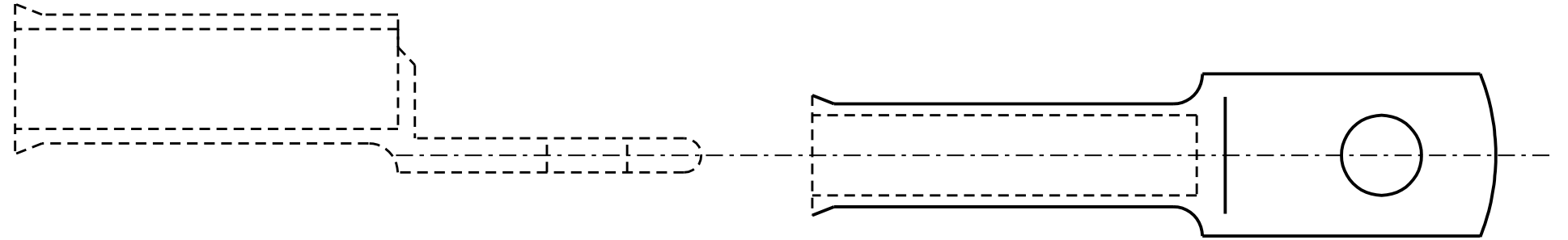
TORQUE RECOMMENDATIONS

FOR HARDWARE BEING METRIC
 8.8 TENSILE GRADE

THREAD DIA. (mm)	TORQUE (Nm)
5	5
6	9
8	22
10	44
12	77
16	190

ITEM LEGEND

- A → STANDARD LUG
- B → LONG BARREL LUG
- C → NARROW PALM BELL MOUTH LUG
- D → LONG PALM SHORT BARREL BELL MOUTH LUG
- E → STANDARD BELL MOUTH LUG



ITEM 2

BELL MOUTH CRIMP LUG

ITEM No.	STOCK CODE No.	NOMINAL CONDUCTOR SIZE (mm ²)	I.D.	STUD	A	B	C	D	E	A/F HEX DIE SIZE (mm ²)	No. OF CRIMPS	ITEM TYPE	TOOLING	
													INDENT	HEX
1	5439	16	5.5	M8	39	14	1.7	16	19	6.3	1	A	✓	✓
2	402023	16	5.5	M12	46	18	2.4	23	19	6.3	1	B	✓	✓
3	5470	25	7.1	M10	44	16	2.0	18	21	7.7	1	A	✓	✓
4	402689	35	8.2	M12	50	20	2.3	24	21	9.2	1	E		✓
5	5496	50	9.5	M10	48	18	3.2	20	22	10.4	1	A	✓	✓
6	402020	50	9.5	M12	52	21	2.7	24	22	10.4	1	B	✓	✓
7	5512	70	11.2	M12	54	21	3.3	24	24	11.5	1	A	✓	✓
8	406766	70	11.2	M112	54	21	3.3	24	24	11.5	1	E		✓
9	5538	95	13.4	M16	64	28	3.4	30	27	14.2	1	A	✓	✓
10	5553	120	15.6	M12	64	29	5.0	26	30	16.5	1	A	✓	✓
11	400864	120	15.6	M12	98	29	5.0	30	60	16.5	3	B	✓	✓
12	5561	150	16.7	M16	80	32	5.5	41	30	18.3	1	A	✓	✓
13	402692	150	16.7	M12	80	32	5.5	41	30	18.3	1	E		✓
14	406769	150	16.7	M16	80	32	5.5	41	30	18.3	1	E		✓
15	5587	185	18.4	M16	83	35	5.7	41	32	20.0	1	A	✓	✓
16	406930	185	18.4	M12	79	31	5.2	32	32	-	2	C		
17	406934	185	18.4	-	147	37	5.4	100	32	-	2	D		
18	5595	240	21.2	-	92	40	7.1	42	38	23.1	3	A	✓	✓
19	406931	240	21.2	M12	127	31	7.1	32	38	-	3	C		
20	406936	240	21.2	-	168	42	7.1	110	38	-	3	D		
21	5611	300	23.5	-	101	45	7.8	46	47.6	26.0	3	A	✓	✓
22	402695	300	23.5	M12	101	45	7.8	46	42	26.0	3	E	✓	✓
23	406932	300	23.8	M12	127	31	7.9	32	42	-	3	C		
24	406935	300	23.8	-	177.6	46	7.9	110	47.6	-	3	D		
25	5629	400	26.8	-	114	50	7.7	52	44	28.1	3	A	✓	✓
26	5645	500	30.0	-	124	56	8.5	56	48	31.0	3	A	✓	✓
27	406933	500	30.0	-	127	31	8.5	32	42	-	2	C		
28	406929	500	30.0	-	195.5	64	11.5	100	55.5	-	2	D		

NO	DESCRIPTION	DRN	DATE	CKD	APPD
3	ITEM 16,17,19,20,23,24,27,28 : STOCK CODE ADDED	A.S.	APR'07	R.S.	S.C.
2	BELL MOUTH TABLE UPDATED	K.I.	MAR'07	RAJ	-
1	BELL MOUTH LUGS ADDED	RAJ	JUL'06	RAJ	S.C.
0	ISSUED FOR CONSTRUCTION	K.I.	JUN'05	R.S.C.	C.C.
AMENDMENTS					



DES	R.S.C	POWER STANDARD DRAWING	
DRN	K.I.	LUGS COPPER CRIMP LUGS FOR STANDARD CONNECTIONS	
CKD	C.F.C		
APPD	C.F.C		
SCALE	...		
ISSUED	MAY '05	A3	DRAWING NUMBER S02-1-2-11
ALL DIM. IN mm			
DRAFTING STANDARD TO A.S.1100		CAD PRODUCT - DO NOT AMEND MANUALLY	

