

- NOTES :
1. FOR DETAILS OF NULEC RECLOSER INSTALLATION REFER TO S01-2-5-17.
  2. FOR DETAILS OF GAS BREAK SWITCH INSTALLATION REFER TO S01-2-7-13.
  3. FOR EARTHING GENERAL ARRANGEMENT REFER TO S01-2-3-22.
  4. FOR SURGE DIVERTER EARTHING ARRANGEMENT REFER TO S01-2-3-10.
  5. EARTH MAT TO BE CAST CENTRALLY AND FLUSH WITH TOP SURFACE OF UNREINFORCED SLAB.
  6. WHERE POSSIBLE, USE EXISTING LV MAINS TO POWER RECLOSER INSTEAD OF INSTALLING A VT.

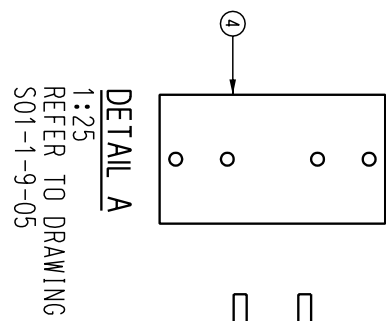
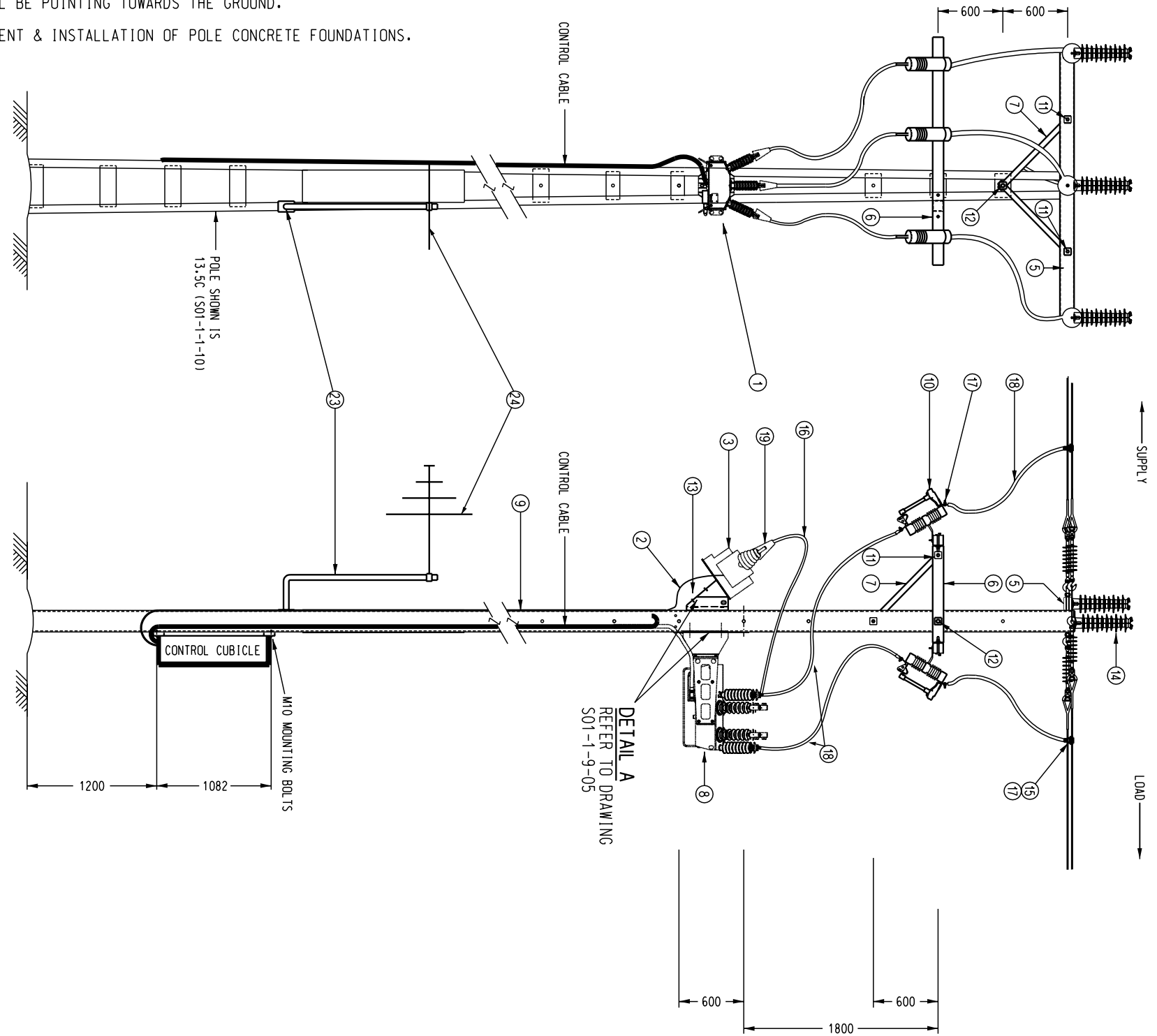
ITEM	QTY.	DESCRIPTION	DRAWING NO.	STOCK CODE
27	1	EARTH MAT	S01-1-5-2	11882
26	24	70 sq mm Cu LUG	S02-1-2-11	5512
25	AR	70 sq mm BARE COPPER CONDUCTOR	S01-1-5-5	9803
24	1	BRACKET FOR RECLOSER	S01-2-5-17	-
23	9	M12 x 40 BOLT & NUT, 2 x FLAT WASHER, SPRING WASHER	S01-1-4-43	114462, 114280, 114249
22	9	M16 x 50 BOLT & NUT, SPRING WASHER	S01-1-4-43	114504, 114322
21	AR	CABLE Cu 1-CORE 150 sq mm FLEXIBLE	S02-1-1-34	299081
20	6	LIVE LINE BAIL CLAMP 420A	S01-1-4-10	239020
19	12	LUG 120 sq mm Cu COMPRESSION BELL MOUTH	S02-1-2-11	402692
18	6	BI-METAL COMPRESSION LUG 185 sq mm	-	5280
17	6	LIVE LINE CLAMP AGP 460A	S01-1-4-17	2121
16	1	GAS BREAK SWITCH "ABB"	S01-2-1-51	406532
15	1	COMMUNICATIONS ANTENNA	-	-
14	1	ANTENNA MOUNT - 1400mm x 2mm PIPE	-	-
13	AR	CABLE - 125 sq mm HV EPR DROPPER	-	400904
12	2	M16 BOLT, 60 LONG, SPRING WASHER & NUT	S01-1-4-43	211144, 114322
11	2	M24 BOLT, 180 LONG, 2 x LARGE FLAT WASHER, SPRING WASHER & NUT	S01-1-4-43	400802, 113993, 114330
10	3	M16 BOLT, 160 LONG, 2 x LARGE FLAT WASHER, SPRING WASHER & NUT	S01-1-4-43	114553, 113985, 114322
9	6	22KV ISOLATING SWITCH	S1-1-6-7	2204
8	6	SURGE DIVERTER MOUNTING BRACKET	S1-1-4-19	251926
7	6	HV SURGE DIVERTER WITH BIRD CAP	S1-1-4-19	-
6	3	CROSSARM BRACE	S01-1-4-38	249433, 249466
5	1	HV SURGE DIVERTER CROSSARM ASSEMBLY	S01-2-1-39	298687
4	1	HV LINE TERMINATION CROSSARM	S01-1-2-10	-
3	1	MOUNTING BRACKET FOR EXTERNAL VOLTAGE TRANSFORMER	-	298521
2	1	22KV EXTERNAL VOLTAGE TRANSFORMER	-	-
1	1	11KV EXTERNAL VOLTAGE TRANSFORMER	-	-
1	1	"NULEC" RECLOSER	-	SUPPLY WITH RECLOSER 287573

NOT FOR  
NEW CONSTRUCTION

					DES C. CAMILLERI		POWER STANDARD DRAWING	
					DRN A. SCHMID		ASSEMBLIES FOR UNIVERSIAL POLE CONSTRUCTION	
2 ADDED - NOT FOR NEW CONSTRUCTION 1 DRAWING NUMBER CHANGED FROM S01-2-1-38 TO S01-2-7-12 0 AS INSTALLED					CKD C. CAMILLERI		"NULEC" RECLOSER & "ABB" GBS SHEET 1 OF 2	
					APPD C. CAMILLERI		SCALE 1 : 50	
C.M. JAN'10 A.T. S.C. J.C. NOV'08 A.T. S.C. A.S. JULY'06					ISSUED JUNE'06		A3 DRAWING NUMBER S01-2-7-12.1	
					ALL DIM. IN mm		DRAFTING STANDARD TO A.S.1100	
AMENDMENTS					CAD PRODUCT - DO NOT AMEND MANUALLY			

NOTES :

1. REFER TO S01-2-3-25 FOR RECLOSER AND VOLTAGE TRANSFORMER EARTHING ARRANGEMENT.
2. FOR UNDERGROUND EARTHING ARRANGEMENT REFER TO EITHER S01-2-3-11, S01-2-3-12 OR S01-2-3-13.
3. WHERE POSSIBLE, POWER THE RECLOSER VIA A PRE- EXISTING LOW VOLTAGE NETWORK THAT IS CONNECTED TO THE SUPPLY SIDE OF THE RECLOSER.
4. WHERE THE EXISTING LV NETWORK IS USED, THE POWER SUPPLY SHALL BE PROTECTED VIA 10A FUSE INSTALLED IN A SERVICE FUSE BASE. A LV SURGE ARRESTOR SHALL BE INSTALLED BETWEEN THE CONTROL BOX SIDE OF THE FUSE AND EARTH.
5. ONLY USE A VOLTAGE TRANSFORMER IF A SUITABLE LOW VOLTAGE NETWORK IS NOT AVAILABLE. THE POWER SUPPLY ACTIVE, NEUTRAL AND EARTH SHALL COME FROM THE VOLTAGE TRANSFORMER.
6. POWER SUPPLY CONDUIT TO BE SADDLE CLAMPED TO THE POLE EVERY 1000MM. ANY OPEN CONDUIT ENDS SHALL BE POINTING TOWARDS THE GROUND.
7. REFER TO S01-2-7-16 FOR COMMUNICATIONS INSTALLATION REQUIREMENTS.
8. REFER TO S01-4-4-01 ON PROCEDURE "POLE INSTALLATION PROCEDURES (CIVIL WORKS)" FOR THE REQUIREMENT & INSTALLATION OF POLE CONCRETE FOUNDATIONS.



ITEM	QTY.	DESCRIPTION	DRAWING No.	STOCK CODE
24	1	COMMUNICATIONS ANTENNA	S01-2-7-16	-
23	1	ANTENNA MOUNTING BRACKET	S01-2-7-16	-
22	AR	LOCK NUTS FOR ANACONDA CONDUIT	-	415549
21	AR	CABLE GLAND FOR ANACONDA CONDUIT	-	415547
20	AR	EARTH TAG FOR ANACONDA CONDUIT	-	415548
19	4	LUG 35SQMM CU COMPRESSION BELL MOUTH	S02-1-2-11	402689
18	AR	CABLE CU 1-CORE 150 SQMM FLEXIBLE	S02-1-1-34	300368
17	24	LUG 150 SQMM CU COMPRESSION BELL MOUTH	S02-1-2-11	402692
16	AR	CABLE CU 1-CORE 35 SQMM FLEXIBLE	S02-1-1-34	402707
15	6	DISCONNECT TEE	S01-1-4-10	2295
14	3	22KV POST TOP INSULATOR	S01-1-3-10	300467
13	4	M16 BOLT, 60 LONG, SPRING WASHER & NUT REFER TO S01-1-6-15	S01-1-4-43	211144,114322
12	2	M24 BOLT, 180 LONG, 2 x LARGE FLAT WASHER, SPRING WASHER & NUT	S01-1-4-43	400802,113993,114330
11	3	M16 BOLT, 160 LONG, 2 x LARGE FLAT WASHER, SPRING WASHER & NUT	S01-1-4-43	400805,113985,114322
10	6	22KV ISOLATING SWITCH	S01-1-6-07	2204
9	AR	20mm DIAMETER ANACONDA CONDUIT	-	415546
8	6	22KV SURGE DIVERTER WITH BIRD CAP (SUPPLIED WITH RECLOSER)	S01-1-4-19	299433
7	3	CROSSARM BRACE	S01-2-1-49	298687
6	1	HV SURGE DIVERTER CROSSARM ASSEMBLY	S01-2-1-39	413506
5	1	HV LINE TERMINATION CROSSARM 125X125	S01-1-2-10	414398
4	2	MOUNTING BRACKET FOR EXTERNAL VOLTAGE TRANSFORMER / RECLOSER	S01-1-9-05	406941
3	1	22KV EXTERNAL VOLTAGE TRANSFORMER - REFER NOTE 4	S01-1-9-05	SUPPLY WITH RECLOSER
2	AR	LV POWER SUPPLY CABLE 2.5SQMM 2 CORE + EARTH	-	503089
1	1	NOJA OSN27 RECLOSER	-	501806

NO	DESCRIPTION	DRN	DATE	CKD	APPD
7	NOTE 8 ADDED, POLE FOUNDATION REMOVED	K.T.	APR'16	I.B.	B.C.
6	ITEM 1, 2, 11 UPDATED	A.T.	MAR'15	I.B.	B.C.
5	BYPASS GBS REMOVED	A.T.	JUN'14	B.C.	B.C.
4	ITEM 2, 5, 9, 14, 15, 16, 17, 18, 19 AND NOTES UPDATED	C.C.	OCT'12	B.C.	S.C.
3	NOTE 5 ADDED	C.M.	FEB'10	...	S.C.
2	DRAWING NUMBER CHANGED FROM S01-2-1-38 TO S01-2-7-11	A.B.	AUG'09	...	S.C.



DES	C. CAMILLERI	POWER STANDARD DRAWING	
DRN	A. SCHMID	ASSEMBLIES, SWITCHGEAR FOR UNIVERSAL POLE CONSTRUCTION "NOJA" RECLOSER & "ABB" GBS SHEET 2 OF 2	
CKD	C. CAMILLERI		
APPD	C. CAMILLERI		
SCALE	1 : 50 ON A2		
ISSUED	JUNE '06	A3	DRAWING NUMBER S01-2-7-12_2
ALL DIM.	IN mm		
DRAFTING STANDARD TO A.S.1100		CAD PRODUCT - DO NOT AMEND MANUALLY	

