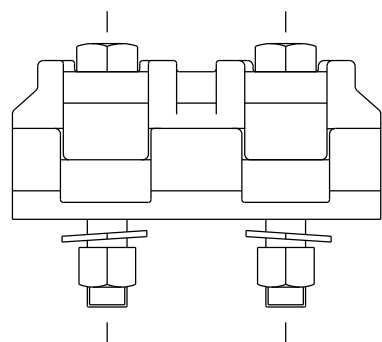
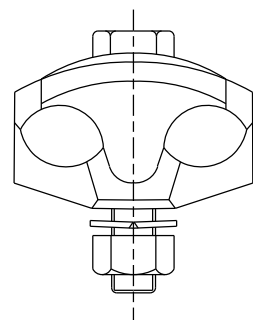


PLAN



ELEVATION



SIDE VIEW

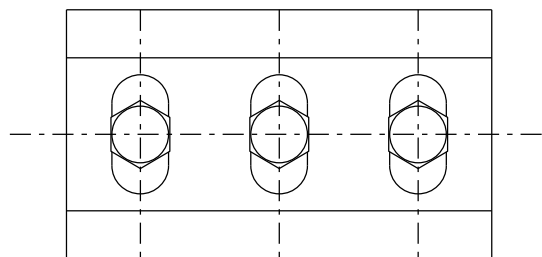
ITEM 1
CLAMP - PARALLEL GROOVE

ITEM NUMBER: 292102

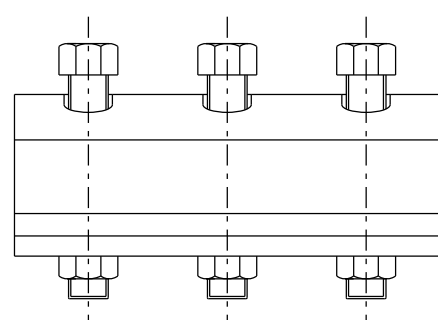
MATERIALS: CLAMP - FORGED ALUMINIUM
BOLTS - STAINLESS STEEL M12x65

CONDUCTOR SIZE: MIN 25mm²
MAX. 150mm²

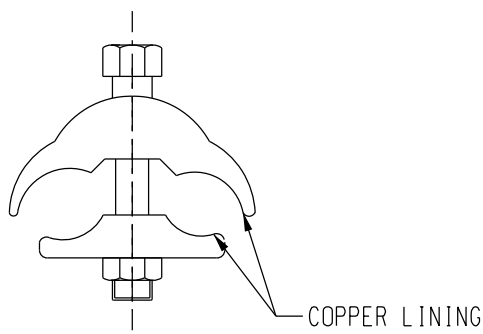
CURRENT RATING - 500A



PLAN



ELEVATION



SIDE VIEW

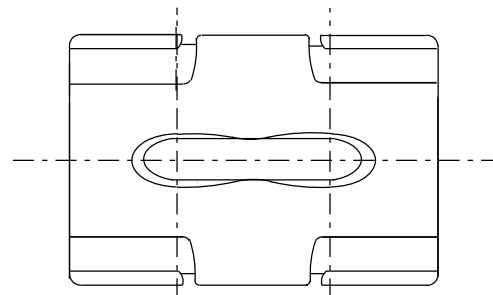
ITEM 2
CLAMP - BIMETAL PARALLEL GROOVE

ITEM NUMBER: 115774

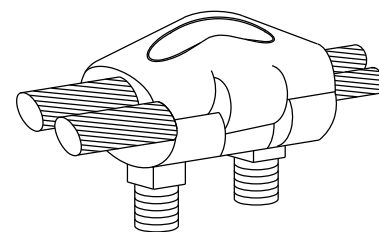
MATERIALS: CLAMP - FORGED ALUMINIUM WITH SWAGED COPPER LINDER ON ONE SIDE TO PROVIDE ALUMINIUM TO COPPER CONNECTION.
BOLTS - STAINLESS STEEL M10x77

CONDUCTOR SIZE: ALUMINIUM - MIN 35sqmm
- MAX 300sqmm
COPPER - MIN 35sqmm
- MAX 240sqmm

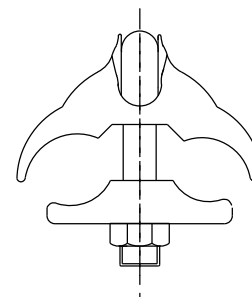
CURRENT RATING - 500A



PLAN



ELEVATION



SIDE VIEW

ITEM 3
CLAMP - PARALLEL GROOVE ALUMINIUM

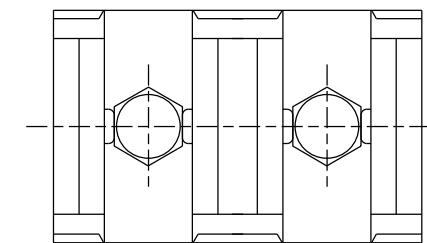
ITEM NUMBER: 402371

MATERIALS: CLAMP - ALUMINIUM TO ALUMINIUM
- HIGH STRENGTH CORROSION RESISTANT AL-ALLOY.
BOLTS - U-BOLT STAINLESS STEEL GRADE 304

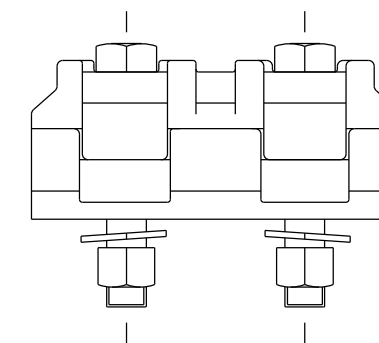
CONDUCTOR SIZE: ALUMINIUM - MIN 95sqmm
- MAX 240sqmm

CURRENT RATING - 500A

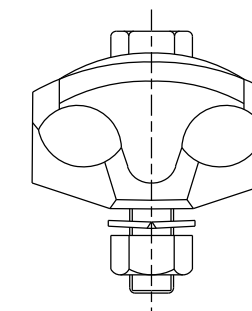
RECOMMENDED BOLT TORQUES: M8 - 23 Nm
M10 - 46 Nm
M12 - 80Nm



PLAN



ELEVATION



SIDE VIEW

ITEM 4
CLAMP - PARALLEL GROOVE ALUMINIUM

ITEM NUMBER: 504145

MATERIALS: CLAMP - COPPER
BOLTS - COPPER

CONDUCTOR SIZE: COPPER - MIN 6sqmm
- MAX 70sqmm

CURRENT RATING - 500A

RECOMMENDED SCREW TORQUES: - 20 Nm

NOTES

1. FITTING TO BE PREFILLED WITH INHIBITOR COMPOUND.
2. FITTING TO BE IDENTIFIED WITH SIZE RANGE.
3. FITTING TO BE INDIVIDUALLY PACKED IN PLASTIC BAGS.

3RD ANGLE -DO NOT SCALE - REPORT ANY ERRORS, OMISSIONS TO DRAFTING OFFICE

						DES -		POWER STANDARD DRAWING	
						DRN A.DAVIS		LINE HARDWARE CLAMPS PARALLEL GROOVE	
						CKD R.INNES			
						APPD F.ROBSON			
						SCALE N.T.S.			
						ISSUED MAY'98			
						ALL DIM. IN mm			
						DRAFTING STANDARD TO A.S.1100		CAD PRODUCT - DO NOT AMEND MANUALLY	
						A3		DRAWING NUMBER S1-1-4-25	
								6	
								AMDT	

NO	DESCRIPTION	DRN	DATE	CKD	APPD
6.	ITEM 4 ADDED.	P.H.	APR'18	B.C.	B.V.
5.	ITEM UPDATED, BI METAL ITEM 3 REMOVED	J.C.	JAN'09	A.T.	S.C.
4.	ITEM 3 ADDED.	K.I.	FEB'05	R.C.	C.C.
3.	ITEM 2 REDRAWN.	RGI	DEC'00	F.R.	F.R.
2.	ITEM 1 MATERIAL CHANGED TO FORGED ALUMINIUM.	RGI	07/98	-	F.R.
1.	REDRAWN ON CAD	A.D.	05/98	R.I.	F.R.

