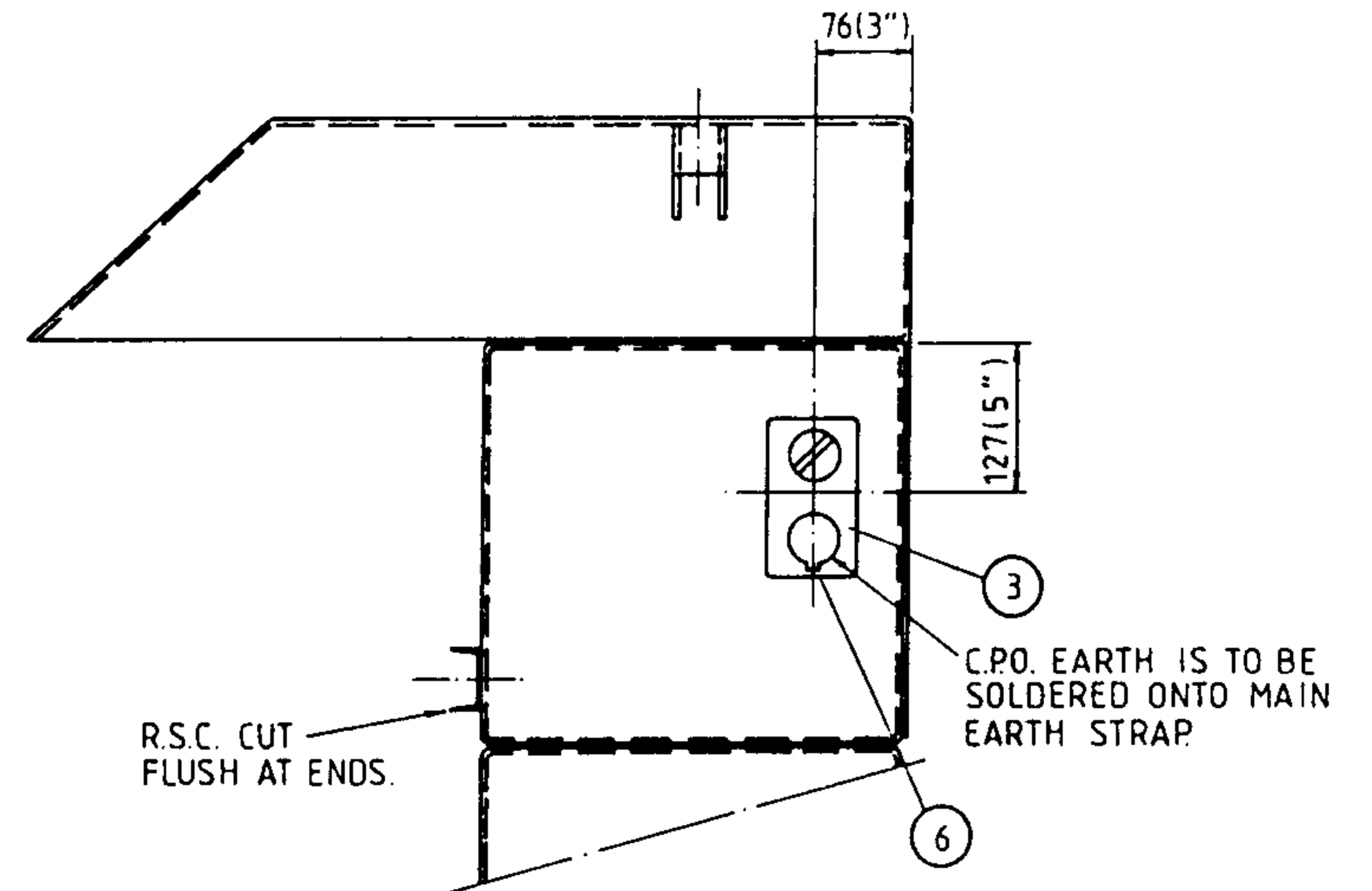
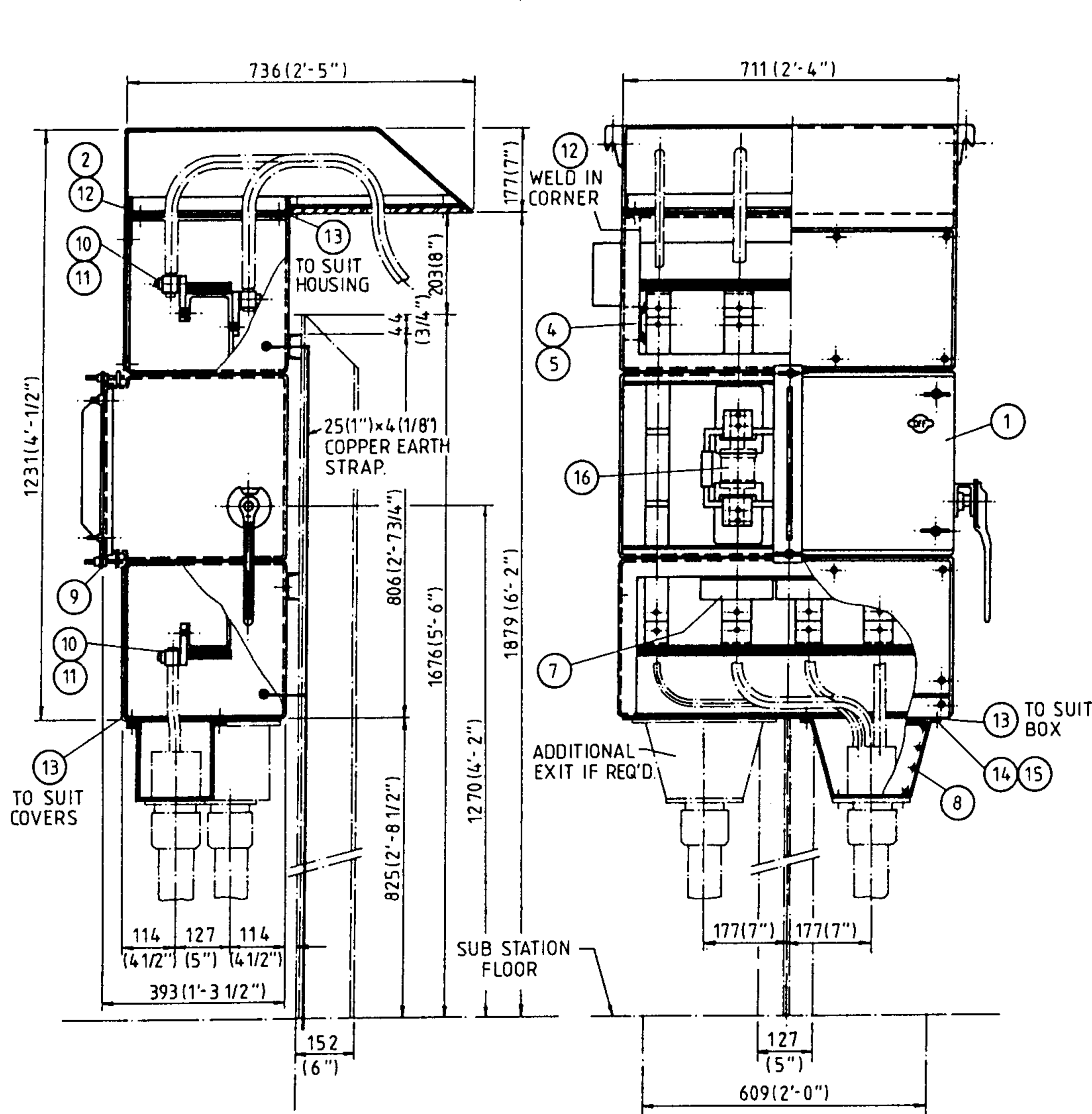


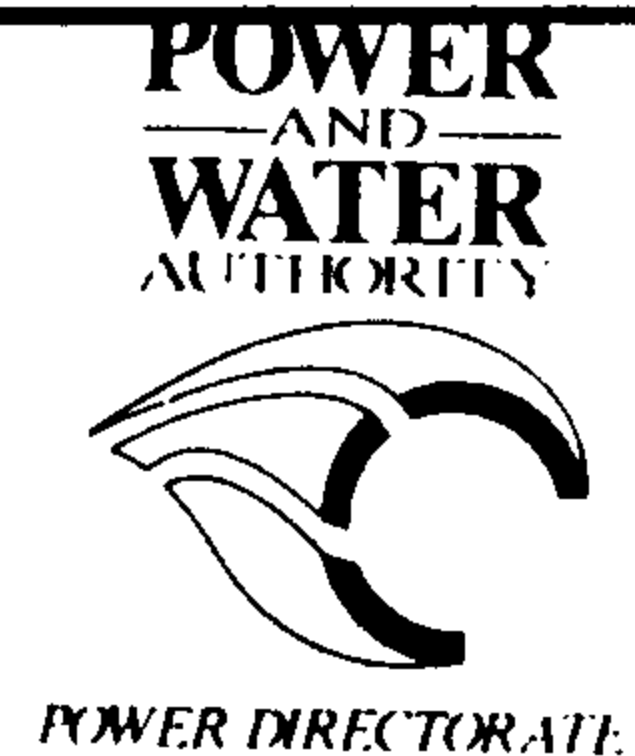
3RD ANGLE — DO NOT SCALE — REPORT ANY ERRORS, OMISSIONS TO DRAFTING OFFICE



16	3	FUSE LINK-H.R.C. CENT. TAG-4 HOLE L.V.
15	8	NUT PRESSED - BRASS 6mm (1/4'')
14	8	SCREW-R.D. HD.-BRASS 6(1/4'') x 25(1'') L.G.
13	AS REQ	GASKET MATERIAL - NEOPRENE 6(1/4'') THICK
12	1	R.S.A. 57(2 1/4'') x 57(2 1/4'') x 6(1/4'') x 673(2'-2 1/4'') L.G.
11	12	BOLT-HEX. H.D.-BRASS 19(3/4'') x 38(1 1/2'') C/W UNIT.
10	12	'QUICK'LUG'-1 HOLE TYPE-CU. COND.
9	1	CLAMP-DOOR SEALING-C.F.S. UNIT
8	1	ADAPTOR BOX - CABLE GLAND L.V.
7	3	C.T. - METERING - BUS BAR MOUNTING
6	AS REQ	CABLE SINGLE CORE 7/036 GREEN
5	1	FUSE LINK - H.R.C. CLIP FIXING - L.V. 15AMP.
4	1	FUSE BASE & CARRIER - F/CONNECT - L.V. 20AMP.
3	1	SWITCH PLUG W/PROOF - 'ROWCO' 9310.
2	1	HOOD - CABLE ENTRY - O/DOOR - C.F.S. UNIT.
1	1	COMBINATION FUSE SWITCH - 750A - L.V.
ITEM	QTY.	DESCRIPTION

MATERIALS SCHEDULE

6	GENERAL REVISION. TITLE & Drg NUMBER CHANGED.	6/88	Q13
NO	AMENDMENT	DATE	INIL



DES R. HAIGH	NT STANDARD DRAWING
DRN T. RICARDO	TITLE
CKD <i>[Signature]</i>	FUSES AND SWITCHGEAR
APPD <i>[Signature]</i>	COMBINATION FUSE SWITCH
ISSUED 5.2.86	OUTDOOR - GROUND SUBSTATION
DRAFTING STANDARD TO A.S. 1100	ASSEMBLY DETAILS
A3	DRAWING NUMBER S2-2-4-1
ALL DIM. IN m.m.	SCALE
	SHEET
	AMDT