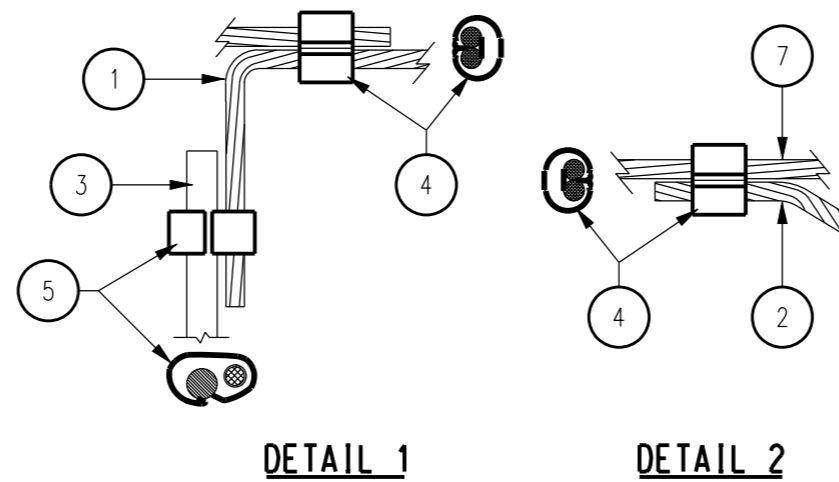


NOTES:

1. EARTHING RODS, CONDUCTORS, AND MESH TO BE INSTALLED BEFORE CONCRETE IS POURED.
2. EARTH ROD AUGER DIAMETER NOT TO BE GREATER THAN 150mm AND BORE DEPTH IS 2000mm.
CLAMP EACH EARTH ROD TO 70sq.mm COPPER CONDUCTOR.
COPPER CONDUCTOR IS BARE UNDER CONCRETE AND INSULATED IN CABLE ENTRY TRENCH.
BACKFILL BORE HOLE FIRST WITH WATERED SLURRY MIXTURE OF ONE BAG OF EARTHING COMPOUND AND SOIL AT 1:1 RATIO, THEN TOP UP WITH EXISTING SOIL.
3. THREE ADDITIONAAL EARTH RODS ARE TO BE INSTALLED AT THE BOTTOM OF THE CABLE ENTRY TRENCH A MINMUM DISTANCE OF 3m APART. THESE EARTH RODS MAY BE DRIVEN.
4. NO PART OF THE M.E.N. EARTH MUST COME INTO ELECTRICAL CONTACT WITH THE FOUNDATION AND THE CABLE ENTRY TRENCH EARTH.
5. EARTH TAILS, AT LEAST TWO, ARE TO BE PROVIDED FOR EARTHING OF FENCE. THE TAILS ARE TO BE BROUGHT UP INSIDE OF CONCRETING BOXING.
6. EQUIPOTENTIAL EARTH PERIMETER MESH OF 300mm WIDTH TO BE LAID AND CONNECTED AS SHOWN.



TAG NO	QTY	DESCRIPTION	STOCK CODE	DRG REF
7	4	EQUIPOTENTIAL EARTHING MESH	288415	-
6	4	EARTHING COMPOUND.	10876	-
5	7	COMPRESSION CONNECTOR, "6" PROFILE.	257394	S1-2-3-15
4	17	COMPRESSION CONNECTOR, "C" PROFILE.	255786	S1-2-3-15
3	7	EARTH ROD - 14mm DIA.	230037	S1-1-5-1
2	AS REQ	70sq.mm INSULATED COPPER CONDUCTOR.	1578	S2-1-1-23
1	AS REQ	70sq.mm BARE COPPER CONDUCTOR.	9803	S1-1-5-5

MATERIAL SCHEDULE

NO	DESCRIPTION	DRN	DATE	CKD	APPD
1	SUPERSEDED BY S02-2-5-08	A.T.	DEC'12	B.C.	B.C.
AMENDMENTS					



DES	F.ROBSON	POWER STANDARD DRAWING		
DRN	R. INNES	EARTHING SUBSTATION FOUNDATION GENERAL ARRANGEMENT		
CKD	-			
APPD	F.ROBSON			
SCALE	1:50			
ISSUED	APR'01	A3	DRAWING NUMBER	S02-2-5-05
ALL DIM.	IN mm			
DRAFTING STANDARD TO A.S.1100		CAD PRODUCT - DO NOT AMEND MANUALLY		AMDT