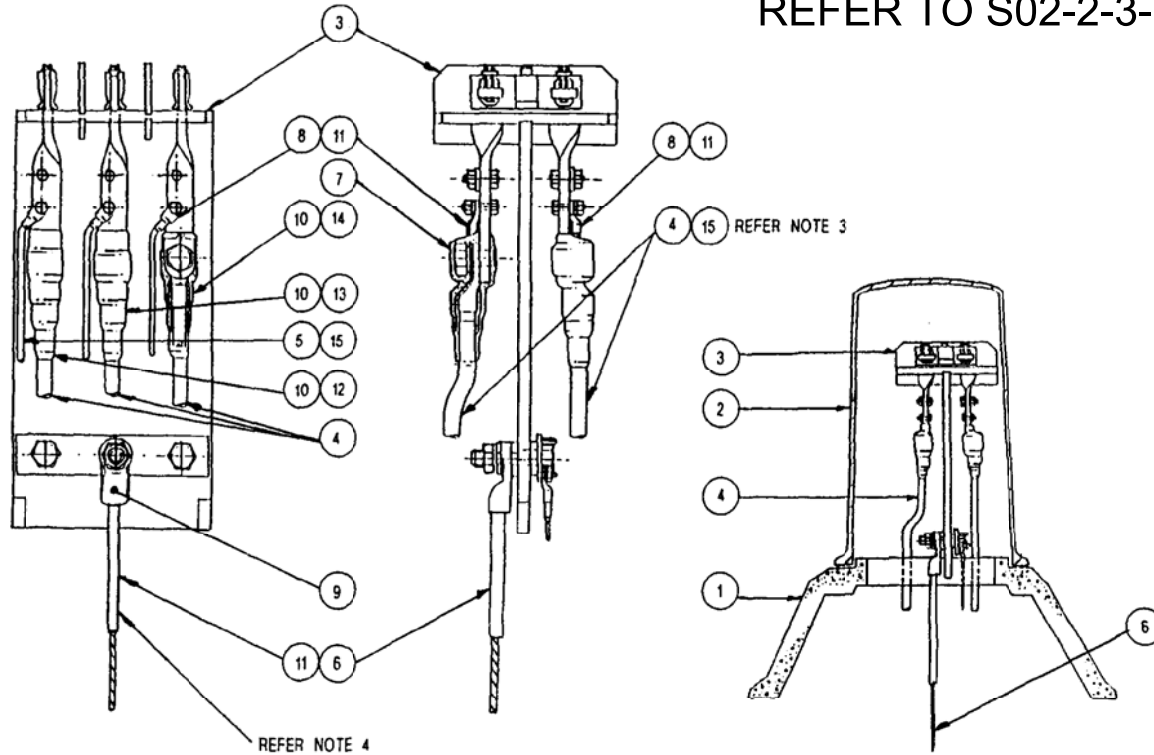


# NOT FOR NEW CONSTRUCTION

## REFER TO S02-2-3-08

### NOTES

- 1 PHASE SEQUENCE - RED, WHITE, BLUE - LEFT TO RIGHT, AS VIEWED FROM MAINS EARTH/NEUTRAL SIDE OF PANEL.
- 2 FOR HEATSHRINK INSTALLATION DETAILS, REFER TO DRG S2-2-2-10.
- 3 MARKERS ARE TO BE ATTACHED TO ALL 'MAINS' CABLES AND ALL 'SERVICE' CABLES, INDICATING THEIR DESTINATION.
- 4 HEATSHRINK TUBING TO BE PLACED OVER BARE NEUTRAL/ EARTHING CONDUCTOR TO A MINIMUM OF 300mm BELOW GROUND LEVEL.



ELEVATION

SECTIONAL VIEW

CROSS SECTION

CABLE and PANEL INSTALLATION ARRANGEMENT

Scale 1:5

PILLAR INSTALLATION ARRANGEMENT


Scale 1:10

| TAG No | QTY. | DESCRIPTION                                   | STOCK CODE | DRG REF   |
|--------|------|---|------------|-----------|
| 15     | AR   | MARKER - UNLABEL & CHANNEL (CRITCHLEY) SIZE 5 | NSI        | -         |
| 14     | 2    | TUBING - HEATSHRINK - BLUE 38-19mm            | 4218       | S2-1-2-15 |
| 13     | 2    | TUBING - HEATSHRINK - WHITE 38-19mm           | 4192       | S2-1-2-15 |
| 12     | 2    | TUBING - HEATSHRINK - RED 38-19mm             | 4184       | S2-1-2-15 |
| 11     | AR   | TUBING - HEATSHRINK - BLACK 35-12mm           | 3228       | S2-1-2-15 |
| 10     | AR   | TUBING - HEATSHRINK - BLACK 50-16mm           | 3210       | S2-1-2-15 |
| 9      | 1    | LUG - COPPER COMPRESSION 95sq.mm              | 156232     | -         |
| 8      | AR   | LUG - COPPER COMPRESSION 25sq.mm              | 5470       | -         |
| 7      | 6    | LUG - BI-METAL COMPRESSION 185sq.mm           | 5280       | -         |
| 6      | AR   | CONDUCTOR - EARTHING - COPPER 95sq.mm         | 9811       | S1-1-5-5  |
| 5      | AR   | CABLE - SERVICE - XLPE 25sq.mm                | 9340       | S2-1-1-19 |
| 4      | AR   | CABLE - MAIN - XLPE 185sq.mm                  | 9316       | S2-1-1-19 |
| 3      | 1    | PANEL - DISTRIBUTION PILLAR - LINK TYPE       | 3491       | S2-1-3-4  |
| 2      | 1    | COVER - DISTRIBUTION PILLAR                   | 3582       | S2-1-3-1  |
| 1      | 1    | BASE - DISTRIBUTION PILLAR                    | 3533       | S2-1-3-1  |

| TAG No | QTY. | DESCRIPTION | STOCK CODE | DRG REF |
|--------|------|-------------|------------|---------|
|--------|------|-------------|------------|---------|

### MATERIAL SCHEDULE

|                             |          |   |                   |          |
|-----------------------------|----------|---|-------------------|----------|
| DES                         | N.F.S.   | N.T. STANDARD DRAWING   |                   |          |
| DRN                         | gmck     | DISTRIBUTION PILLARS<br>RESIDENTIAL - LINK TYPE<br>BARE NEUTRAL ARRANGEMENT |                   |          |
| CKD                         | N.Stubbs |   |                   |          |
| APPD                        | B.T.Kent |   |                   |          |
| SCALE                       | as shown |   |                   |          |
| ISSUED                      | NOV'92   | A3  | DRAWING<br>NUMBER | S2-2-3-7 |
| ALL DIM. IN                 | mm       |   |                   |          |
| DRAFTING STANDARD TO AS 100 |          | CAD PRODUCT - DO NOT AMEND MANUALLY   |                   | 2        |

|     |                          |                   |      |      |        |   |
|-----|--------------------------|-------------------|------|------|--------|---|
| 2   | SUPERSEDED BY S02-2-3-08 | J.C.              | B.C. | S.C. | MAY'09 |  |
|     | 1                        | TAG No.9 REVISED. | gmck | A.G. | B.T.K. |   |
| NO. | AMENDMENT                | DRN               | CKD  | APPD | DATE   | NORTHERN TERRITORY  |