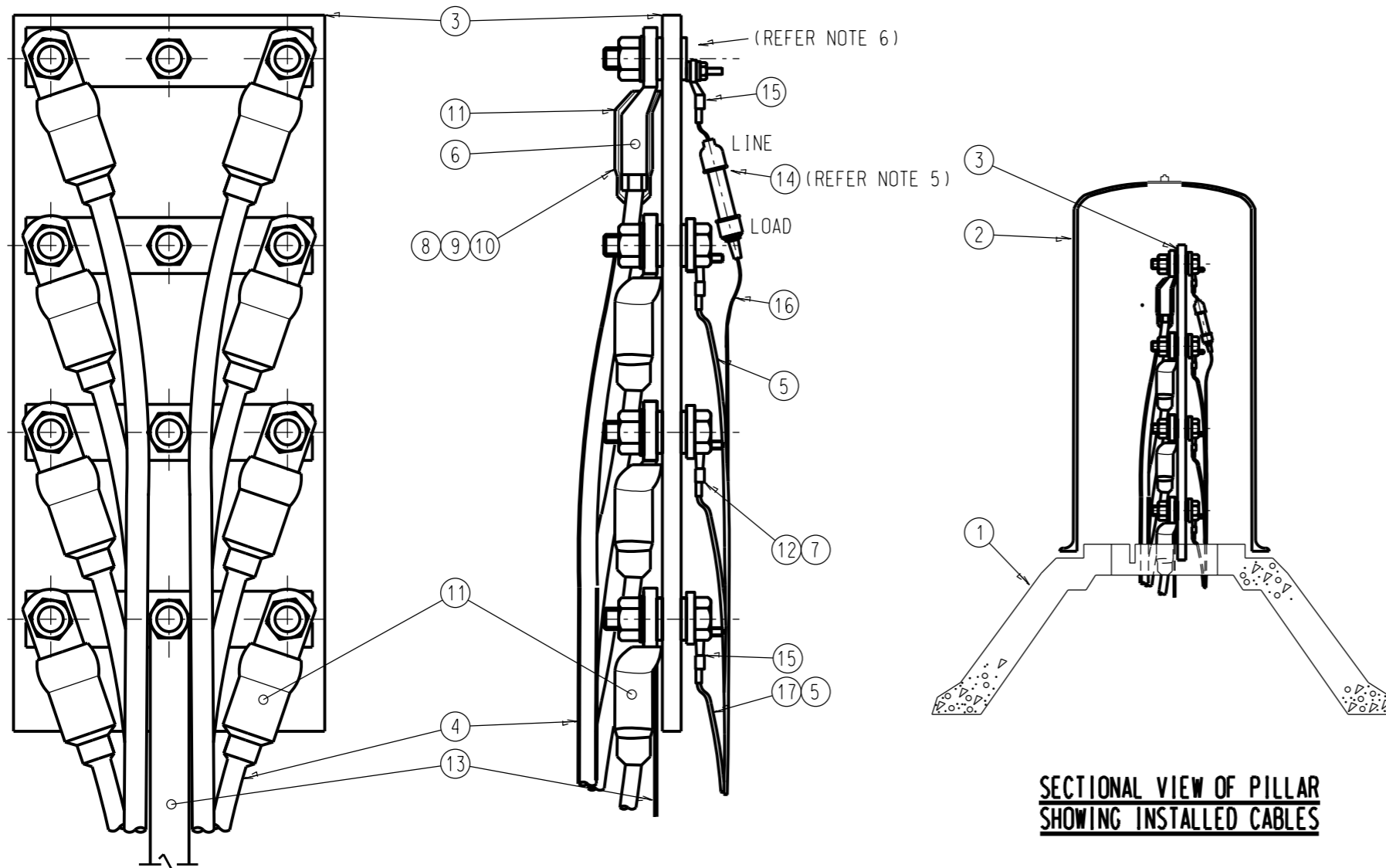


**NOTES :**

1. PHASE SEQUENCE, RED, WHITE, BLUE, NEUTRAL, TOP TO BOTTOM.
2. FOR PANEL DETAILS SEE DRG S2-1-3-5.
3. FOR HEAT SHRINK INSTALLATION DETAILS SEE DRG S2-2-2-10.
4. FOR PILLAR DETAILS SEE DRG S2-1-3-1.
5. IN LINE FUSE ADDED FOR STREETLIGHT CONNECTION.  
25 sq.mm SERVICE CABLE AND BOLT HEAD NOT SHOWN FOR CLARITY.  
ONLY 16 sq.mm STREETLIGHT CABLE AND BOLT SHOWN.
6. CENTRE STUD SHOWN ONLY.
7. INSULATING PANELS SHALL BE SEALED WITH WATER PROOF PAINT TO ALL EDGES AND DRILL HOLES
8. MINIMUM RESISTANCE READINGS BETWEEN INSULATING MATERIALS AND METAL PARTS OF THE PILLARS SHALL BE 50 MΩ



**DETAIL OF PANEL SHOWING CABLE INSTALLATION**

**SECTIONAL VIEW OF PILLAR SHOWING INSTALLED CABLES**

TAG No	QTY	DESCRIPTION	S/C	DRG REF
17	As REQ	CABLE (TAIL) - COPPER - 16 sq.mm - BLACK	1636	S2-1-1-23
16	As REQ	CABLE (TAIL) - COPPER - 16 sq.mm - RED	1644	S2-1-1-23
15	As REQ	LUG - COPPER - COMPRESSION - 16 sq.mm	5439	
14	As REQ	HOLDER - FUSE - SUBMERSIBLE	247742	
13	As REQ	EARTHING CONDUCTOR - COPPER 25 X 3	9837	S1-1-5-5
12	As REQ	SLEEVE - HEATSHRINK - BLACK	4473	S2-1-2-15
11	As REQ	SLEEVE - HEATSHRINK - BLACK	3210	S2-1-2-15
10	As REQ	TUBING - HEATSHRINK - BLUE	4218	S2-1-2-15
9	As REQ	TUBING - HEATSHRINK - WHITE	4192	S2-1-2-15
8	8	TUBING - HEATSHRINK - RED	4184	S2-1-2-15
7	As REQ	LUG - BI-METAL - COMPRESSION - 25 sq.mm	5215	
6	8	LUG - BI-METAL - COMPRESSION - 185 sq.mm	5280	
5	As REQ	CABLE - SERVICE XLPE (25 sq.mm)	9340	S2-1-1-19
4	As REQ	CABLE - MAIN XLPE (185 sq.mm)	9316	S2-1-1-19
3	1	PANEL - POLYESTER FILLED FIBREGLASS TO N.E.M.A. GPO-1	3517	S2-1-3-5
2	1	COVER-HEAVY WALLED FIRE RESISTANT FIBREGLASS	3582	S2-1-3-1
1	1	BASE-CONCRETE-FIBRE	3533	S2-1-3-1

**MATERIAL SCHEDULE**

NO	DESCRIPTION	DRN	DATE	CKD	APPD
6	SUPERSEDED BY S02-2-3-08	J.C.	JUN'09	A.T.	S.C.
5	NOTE 7 & 8 ADDED	J.C.	SEP 07	B.C.	
4	REDRAWN ON MICROSTATION. STREET LIGHT IN LINE FUSE ADDED. NOTE 6 ADDED	J.A.L	APR'01	F.R.R.	



DES	J.H
DRN	R.H.
CKD	...
APPD	...
SCALE	NTS
ISSUED	FEB'86
ALL DIM. IN	mm
DRAFTING STANDARD TO A.S.1100	

**DISTRIBUTION PILLARS  
RESIDENTAL  
SERVICE TYPE  
GENERAL ARRANGEMENT**

**A3** DRAWING NUMBER **S02-2-3-02**

DRAFTING STANDARD TO A.S.1100 CAD PRODUCT - DO NOT AMEND MANUALLY **AMDT**