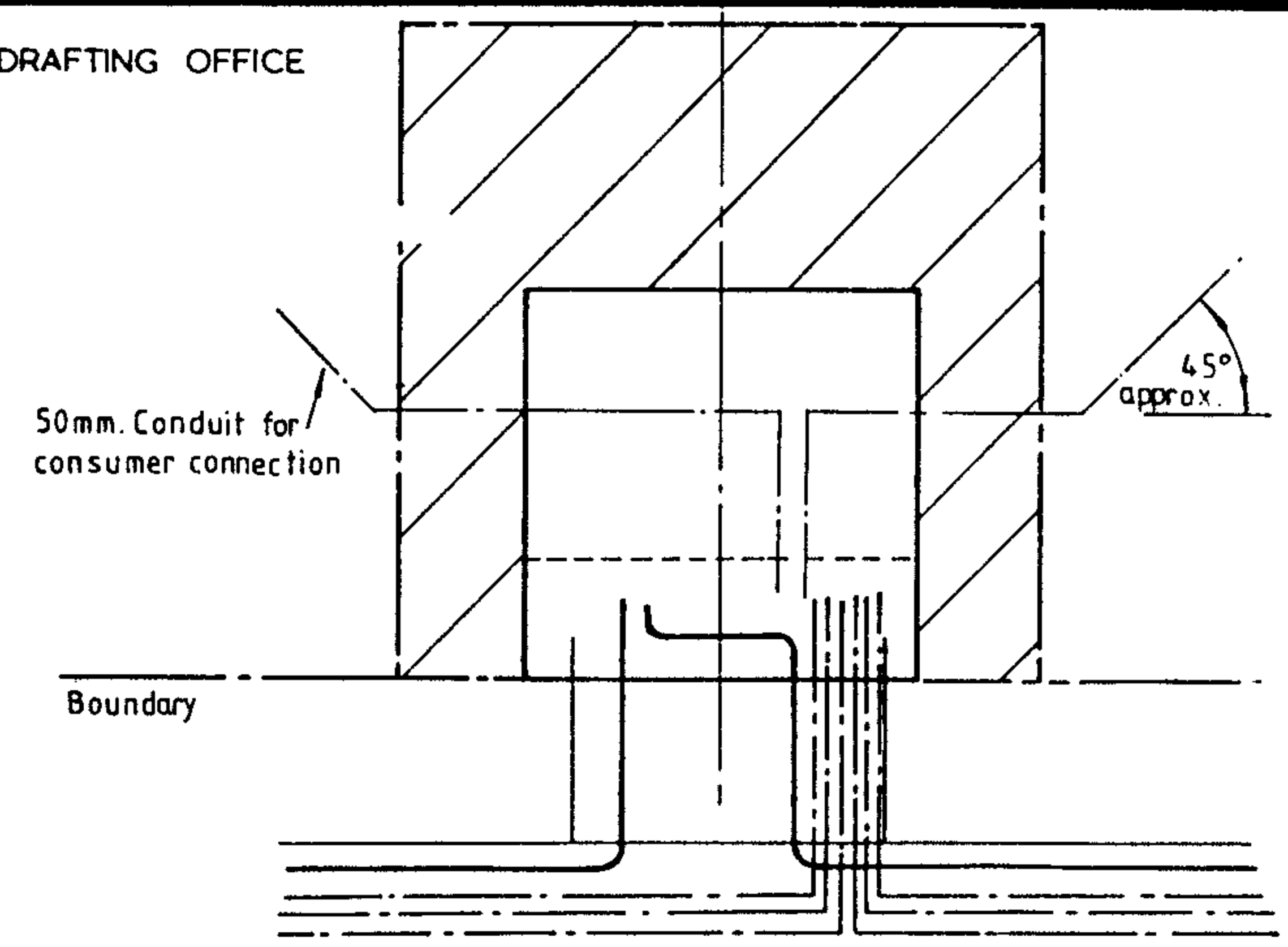
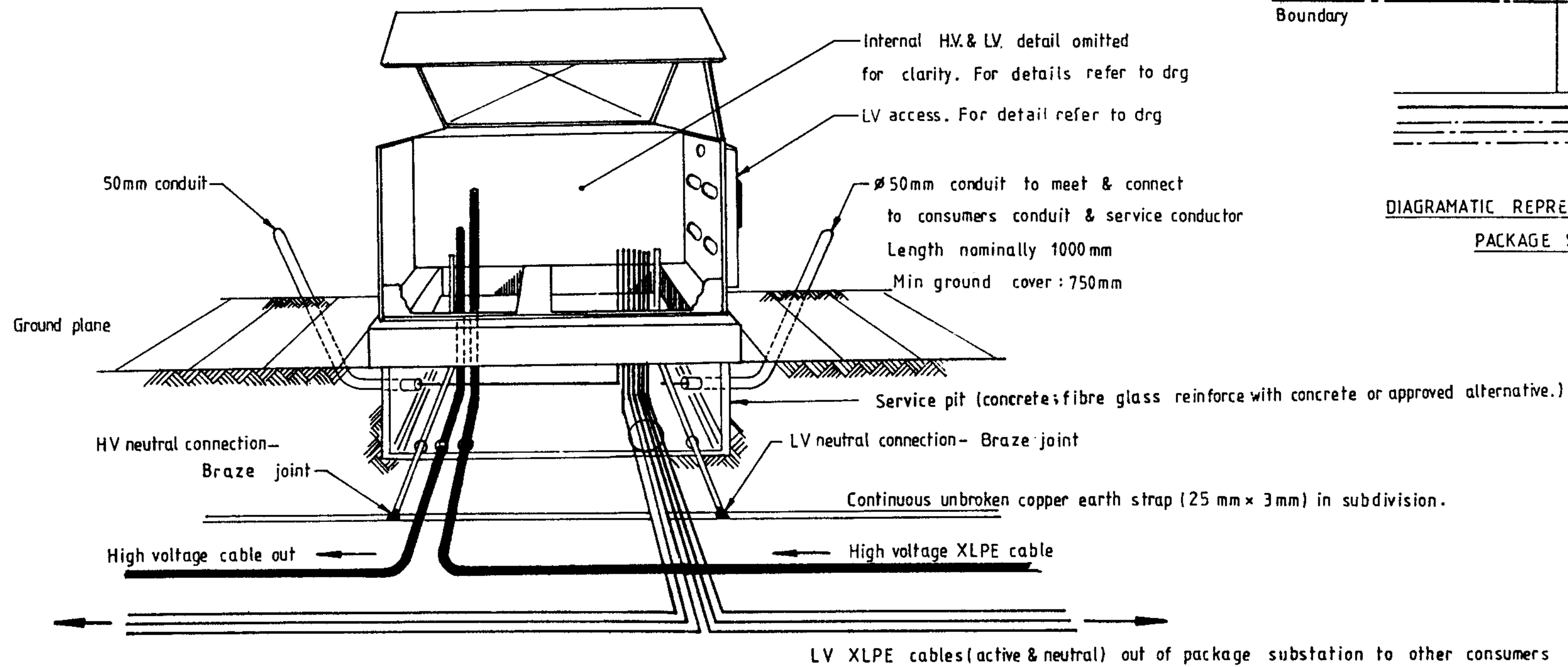


3RD ANGLE — DO NOT SCALE — REPORT ANY ERRORS, OMISSIONS TO DRAFTING OFFICE



DIAGRAMATIC REPRESENTATION OF RELATIONSHIP BETWEEN PACKAGE SUBSTATION & BLOCK BOUNDARIES

NOTES : 1. The transformer site is to be at finished ground level. It should be levelled drained and consolidated at least 4 weeks before electricity supply is required.
2. Fences must not be constructed to restrict access to transformer.

No.	AMENDMENT	DATE	INIT	APPD
7	TITLE & Drg NUMBER CHANGED	6/88	RLH	
6	GENERAL REVISION	1/85	T.R.	
5	MOVE THE CENTRE OF EQUIPMENT	9/3/84	P.W.S	

<p>POWER AND WATER AUTHORITY</p> <p>POWER DIRECTORATE</p>	DES D.M.BIRKETT	NT STANDARD DRAWING	
	DRN D.M.BIRKETT	TITLE CIVIL	
	CKD J. HASSANEN (SE)	PACKAGE SUBSTATION	
	APRD [Signature]	50 kVA-11kV SINGLE PHASE	
	ISSUED 11.3.80	CABLE & TRENCH ARRANGEMENT	
DRAFTING STANDARD TO A.S. 1100	A3	DRAWING NUMBER	S2-2-6-11
ALL DIM. IN mm	SCALE	SHEET	7

