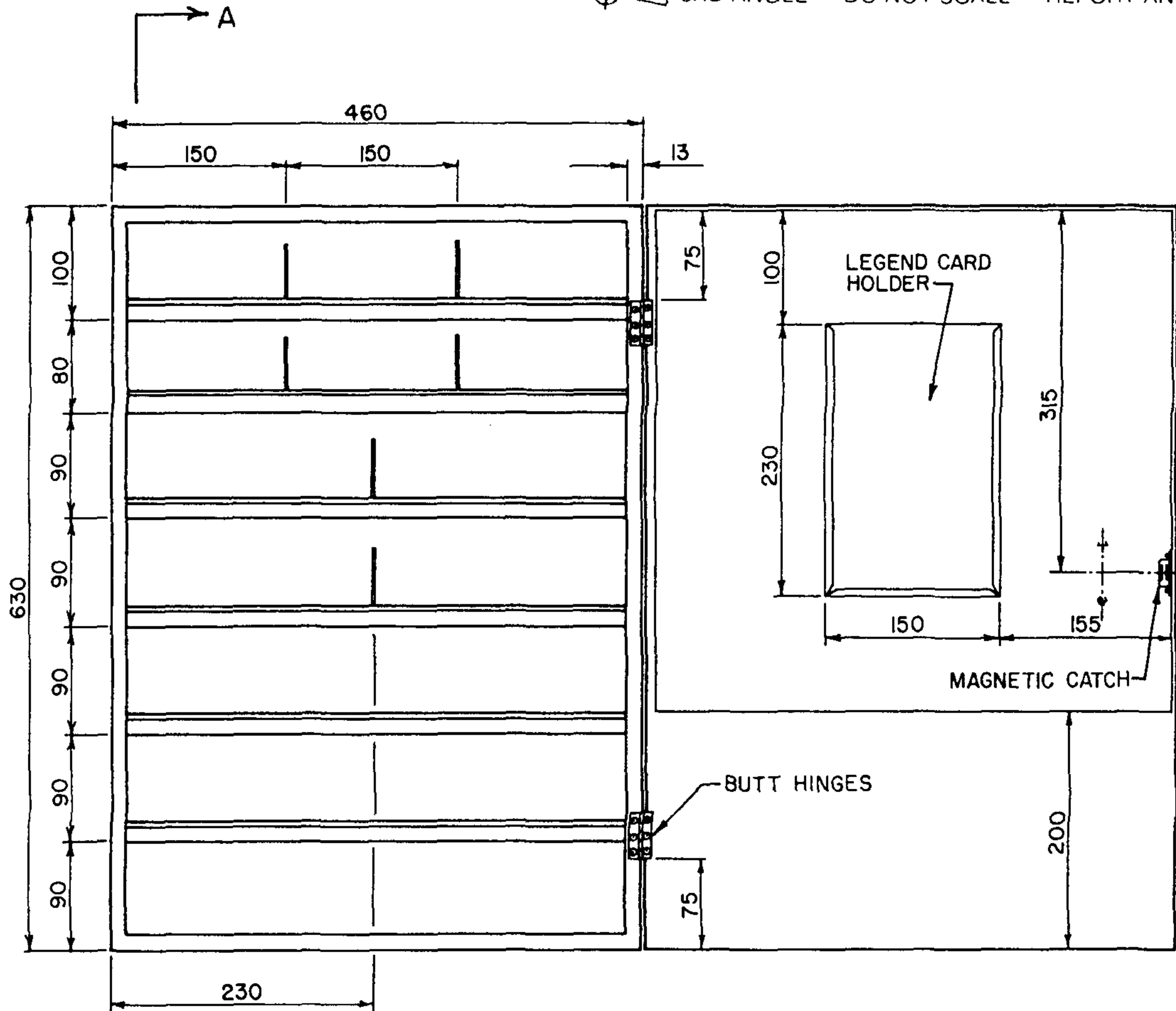
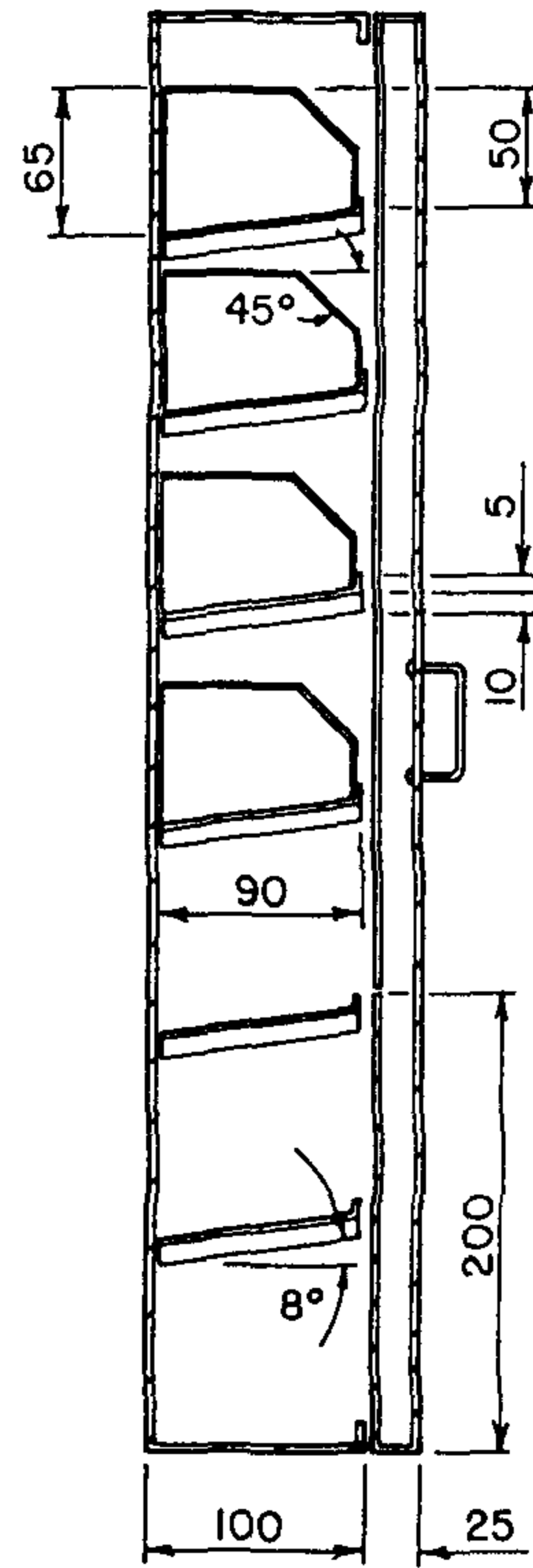


3RD ANGLE -- DO NOT SCALE -- REPORT ANY ERRORS OMISSIONS TO DRAFTING OFFICE

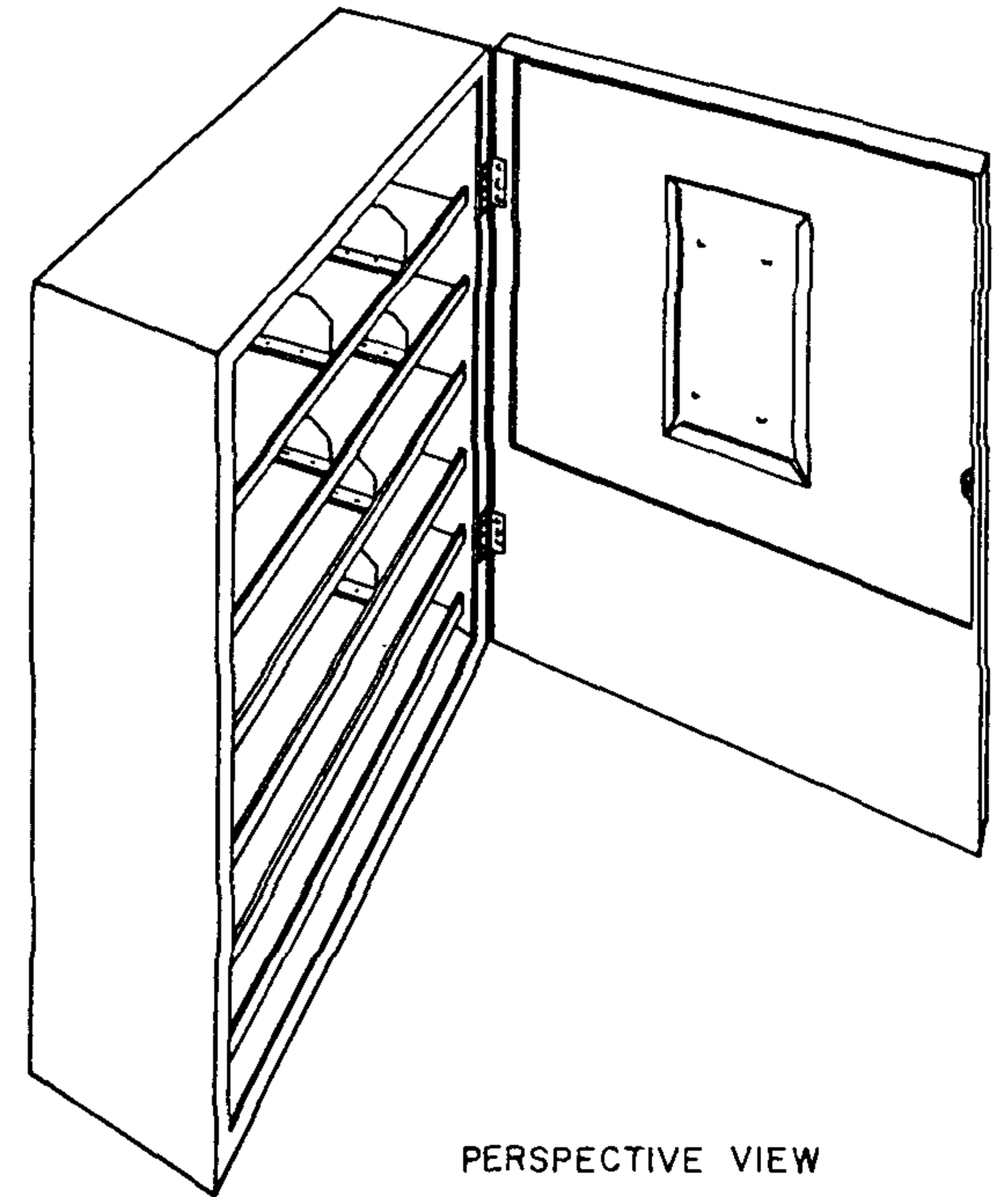


ELEVATION
(DOOR OPEN)

ITEM I. STOCK CODE I14819



SECTION A-A
(DOOR CLOSED)



PERSPECTIVE VIEW

NOTES

- 1-CABINET IS TO BE FABRICATED FROM 0.80mm (BG22) STEEL ALL EXTERNAL WELDS TO BE GROUND SMOOTH
- 2-SHELVES TO BE SPOT WELDED TO SIDES OF CABINET
- 3-PARTITIONS TO BE WELDED TO SHELVES AND TACK WELDED TO BACK OF CABINET
- 4-LEGEND CARD HOLDER TO BE SPOT WELDED TO INSIDE DOOR
- 5-HINGES MAY BE RIVETED OR WELDED TO CABINET & DOOR
- 6-PAINTING-1 PRIMING COAT FOLLOWED BY 2 COATS OF ENAMEL COLOUR MID GREY N52 TO AS2700-1985

					DES	N T STANDARD DRAWING		
					DRN W.TAYLOR,	TITLE	SUBSTATIONS	
					CKD <i>[Signature]</i>	INDOOR		
					APPD <i>[Signature]</i>	CABINET		
					ISSUED 12/5/87 <i>[Signature]</i>			
					DRAFTING STANDARD TO AS 1100	A3	DRAWING NUMBER	S2-1-7-7
					ALL DIM IN mm	SCALE 1:5	SHEET	
1	TITLE & Drg NUMBER CHANGED		Q11	5/88				
No	AMENDMENT		DRAWN	DATE	INIT			