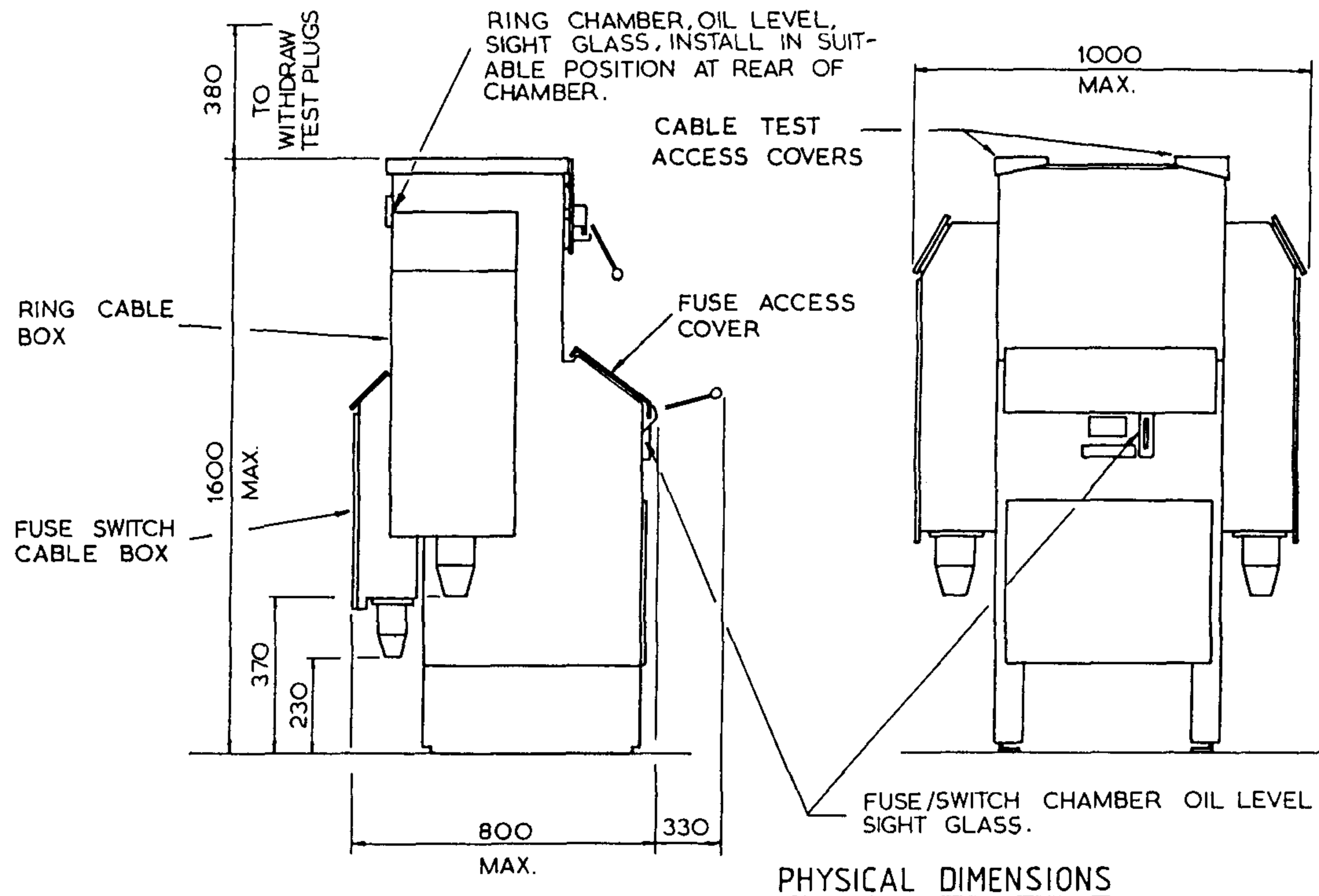


3RD ANGLE — DO NOT SCALE — REPORT ANY ERRORS, OMISSIONS TO DRAFTING OFFICE



PHYSICAL DIMENSIONS

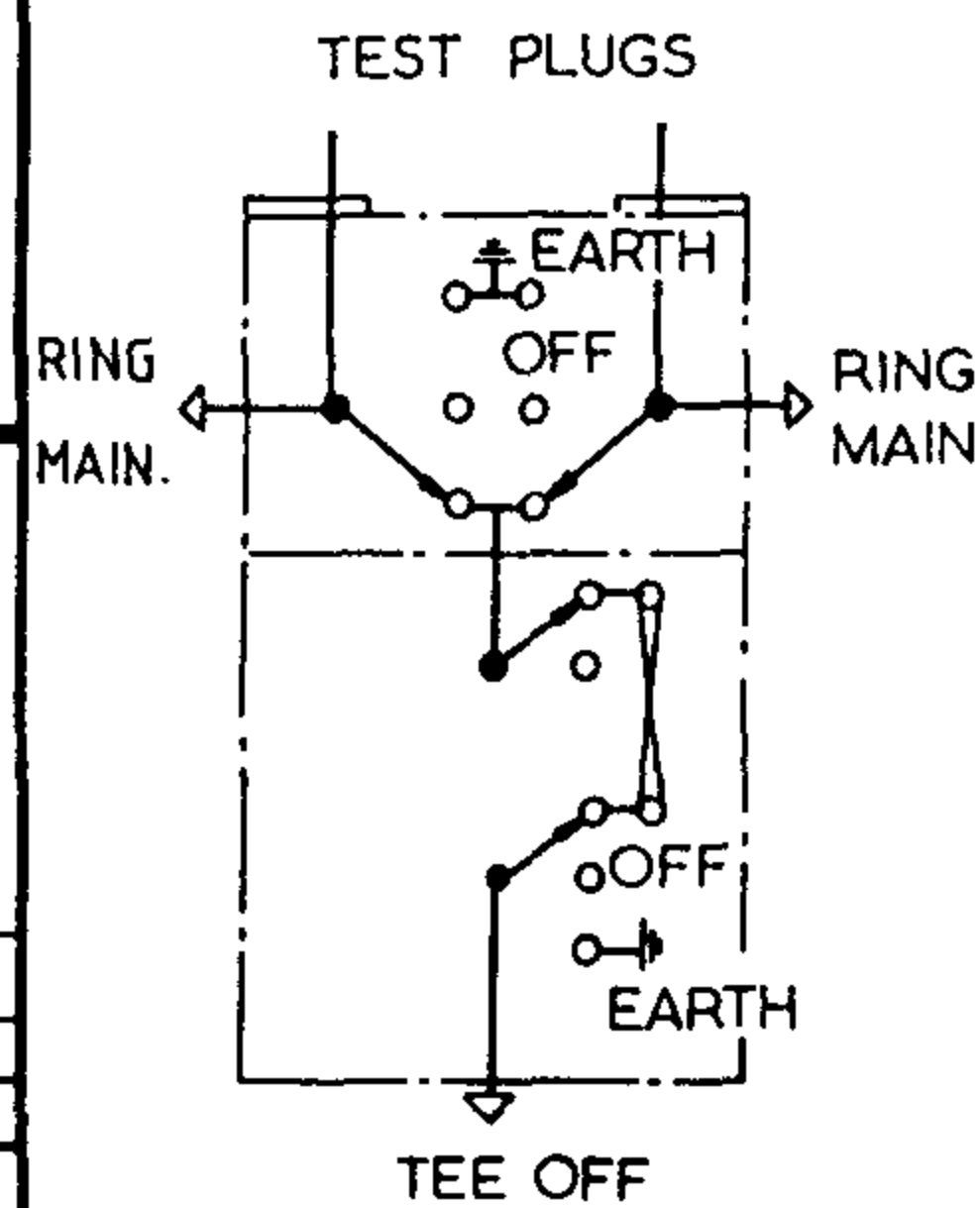
**NOTES**

- UNIT SHALL BE ... (1) AN INDOOR/OUTDOOR UNIT FOR USE IN TROPICAL CONDITIONS.  
 ... (2) TOTALLY ENCLOSED - VERMIN PROOF - METAL CLAD.  
 ... (3) FRONT OPERATED ONLY.  
 ... (4) NON EXTENSIBLE DESIGN.  
 ... (5) SUITABLE FOR MOUNTING OVER 450mm WIDE OPEN CABLE DUCTS.
- SUPPLY SYSTEM... THREE PHASE, 50 HERTZ, 11,000 VOLTS, EARTHED NEUTRAL SYSTEM.  
 RATING... 250 MVA AT 11KV.  
 IMPULSE LEVEL... 95 KV.
- UNIT CONSISTS OF... (1) TWO HAND OPERATED ISOLATING AND EARTHING SWITCHES.  
 ... (2) ONE SWITCH FUSE AND EARTHING UNIT. THE OPERATION FROM 'ON' TO 'OFF' POSITION IS CONTROLLED EITHER BY MANUAL TRIPPING OR THROUGH THE OPERATION OF ANY ONE OF THE FUSE STRIKER PINS.  
 THE FUSE HOLDER SHALL BE ABLE TO ACCOMODATE 255mm LONG HRC OIL FUSE LINK WITH 63mm DIA. BARREL.
- FITTINGS... (1) CABLE BOXES - TWO, RING CABLE BOXES SHALL BE SUITABLE FOR CABLES UP TO 400mm, 3 CORE, 11KV, AL. CABLE. THE FUSE SWITCH CABLE BOX SHALL BE SUITABLE FOR 95mm, 3 CORE, AL. CABLE, OR 3 SINGLE CORE 95mm XLPE CABLES.  
 ... (2) SIGHT GLASS OIL LEVEL INDICATORS FOR RING CHAMBER AND FUSE SWITCH CHAMBER.  
 ... (3) LIFTING LUGS.  
 ... (4) DRAIN VALVES "WITH LEAK PROOF CAPS" FOR DRAINING OF THE OIL FROM THE RING MAIN CHAMBER AND THE FUSE SWITCH CHAMBER.  
 ... (5) PADLOCKING - PROVISION SHALL BE MADE FOR PADLOCKING THE SWITCHES IN "ON", "OFF" OR "EARTH" POSITION USING A PADLOCK HAVING 10mm DIA. HOOP.  
 ... (6) INTERLOCKING MECHANISM.  
 ... (7) OPERATING HANDLE POSITION INDICATORS.  
 ... (8) EARTHING CONTINUITY BUSBAR, CROSS SECTIONAL AREA NOT LESS THAN 300mm<sup>2</sup>.
- TESTING... SHALL BE IN ACCORDANCE WITH A.S. 1025  
 A.S. 2086

ITEM 1. STOCK CODE 114934

F.R.M.U.	RING MAIN		TEE OFF	
	MAIN SWITCH	EARTH SWITCH	SWITCH FUSE	EARTH SWITCH
RATED CURRENT IN AMPS AT 11KV.	400	—	≥200	—
MAX. FUSE RATING AT 11KV.	—	—	100	—
MAKING CAPACITY KA PEAK AT 11KV.	33.4	33.4	33.4 prospective	64
BREAKING CAPACITY KA SYMMETRICAL 11KV.	—	—	13.1 prospective	—
SHORT TIME CURRENT KA - 3 SEC.	13.1	13.1	—	13.1

**SCHEMATIC DIAGRAM**



**UNDER REVIEW**

No.	AMENDMENT	DATE	INIT.	APP'D
2	STOCK CODE & ITEM NO. AMENDED	03/87	WT	Band
2	STOCK CODE CHANGED	01/87	WT	Band
1	INDEX N° ALTERED	9/85	LPP	

**POWER AND WATER AUTHORITY**



POWER DIRECTORATE

DES J. HASSANEN	N T STANDARD DRAWING	
DRN R. HAIGH	TITLE SUBSTATIONS	
CKD J. HASSANEN	RING MAIN UNIT	
APP'D [Signature]	LUCY	
ISSUED 28/11/79	A3	DRAWING NUMBER S2-1-7-4
DRAFTING STANDARD TO A.S. 1100		
ALL DIM. IN mm	SCALE N.T.S.	SHEET

