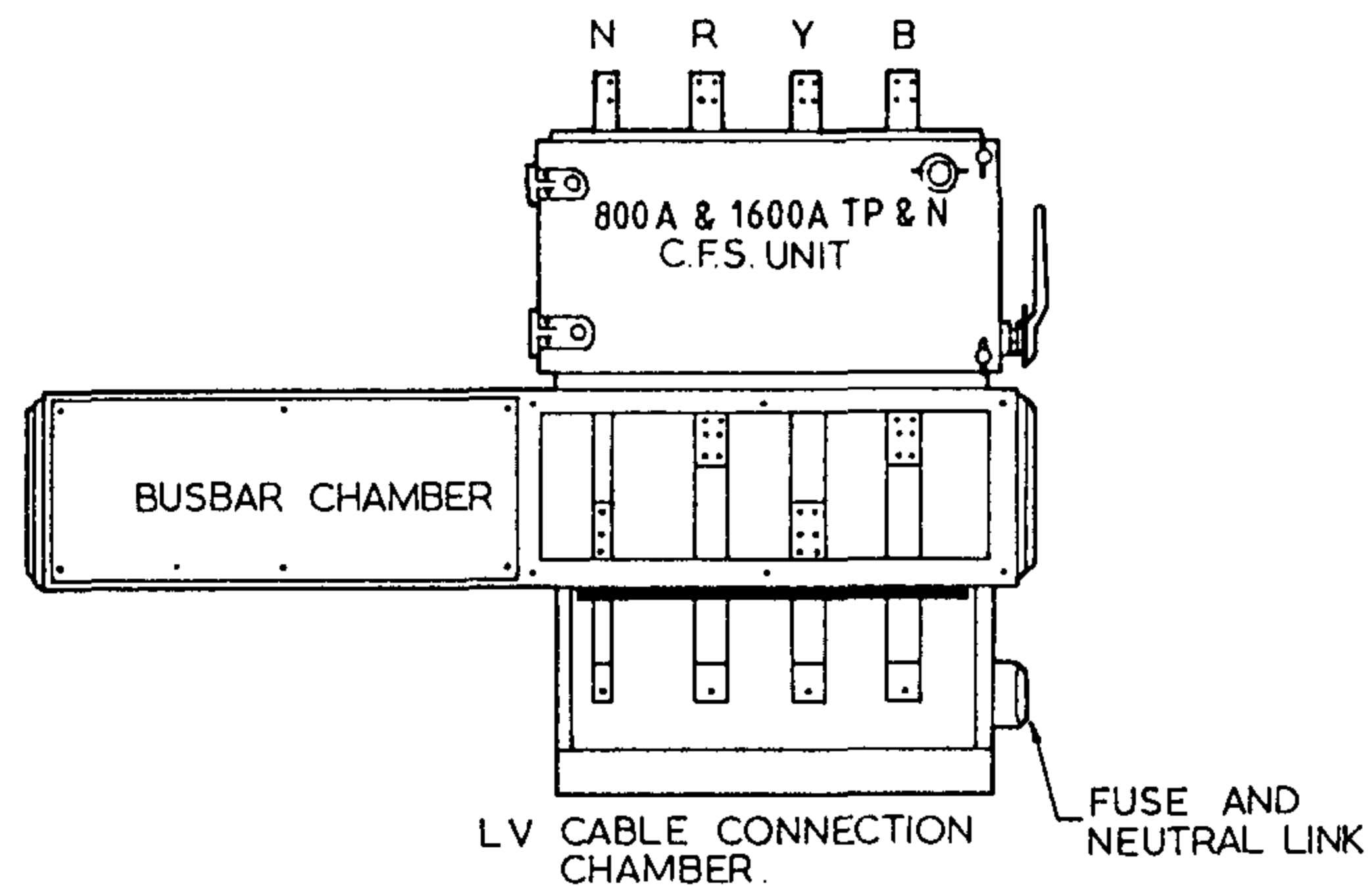
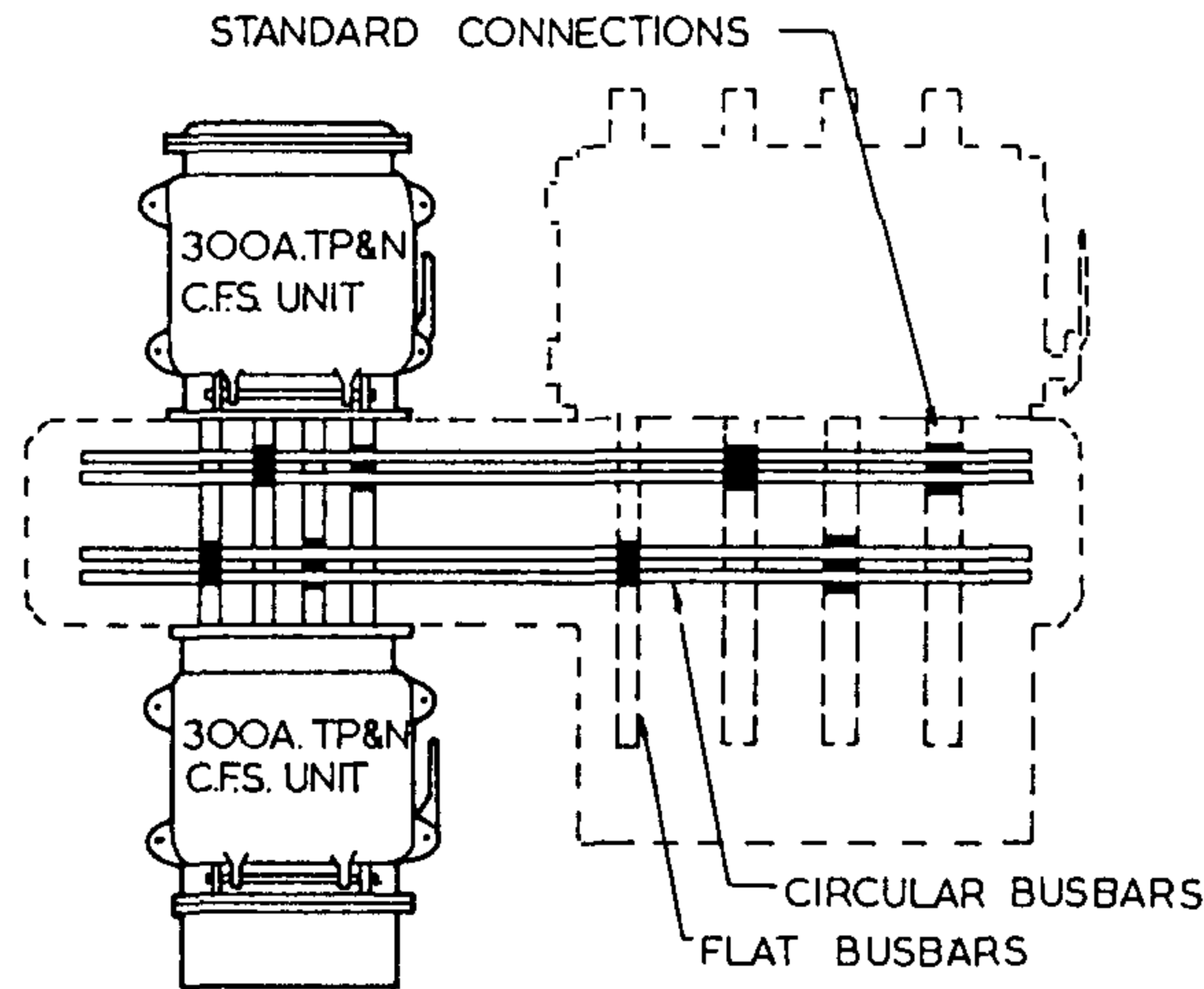


3RD ANGLE — DO NOT SCALE — REPORT ANY ERRORS, OMISSIONS TO DRAFTING OFFICE



STAGE 1



STAGE 2

TECHNICAL DATA

DIMENSIONS MARKED '+' ARE MANDATORY.
 FAULT LEVEL - 31 M.V.A. FOR 1 SEC.
 RATED CURRENT - C.F.S., 800A & 300A
 FINISH - ALL METAL TO BE SUITABLY PRIMED AND FINISHED WITH 2 COATS OF ENAMEL.
 MANUFACTURED & TESTED - IN ACCORDANCE WITH A.S. 1775 & A.S. 3133

GENERAL NOTES

- 1... PHASE SEQUENCE ON ALL EQUIPMENT MUST BE NEUTRAL - RED - YELLOW - BLUE, FROM LEFT TO RIGHT, WHEN VIEWED FROM THE FRONT.
- 2... ALL BUSBARS, BUSBAR DROPPERS AND CONNECTIONS MUST BE ADEQUATELY SUPPORTED BY CLEATS OF SUITABLE INSULATING MATERIAL.
- 3... A 55A NEUTRAL LINK AND A 30A H.R.C FUSE ARE TO BE MOUNTED EXTERNALLY ON THE LV CABLE CONNECTION CHAMBER AND ARE TO BE SUITABLY CONNECTED TO THE BUSBARS.
- 4... THE C.F.S. UNITS MUST HAVE AN ACTUATING LEVER THAT IS LOCKABLE IN BOTH ON & OFF POSITIONS. THE MOVING CONTACT MECHANISM MUST BE FULLY INTERLOCKED TO PREVENT CLOSURE OF THE SWITCH WHEN THE DOOR IS OPEN. ALSO OPENING OF THE DOOR WHEN THE SWITCH IS CLOSED.
- 5... THE LV SWITCHGEAR ARRANGEMENT MUST BE READILY CONVERTABLE IN THE FIELD FROM STAGE 1 TO STAGE 3 USING STANDARD FITTINGS AS SHOWN IN STAGE 2.

NOTE - THE ENGLISH ELECTRIC FUSE CARTRIDGES SUITABLE FOR USE IN THE 800A C.F.S. ARE - TM 350, TM 400, TTM 450, TTM 500, TLM 700, TLM 750 & TLM 800.

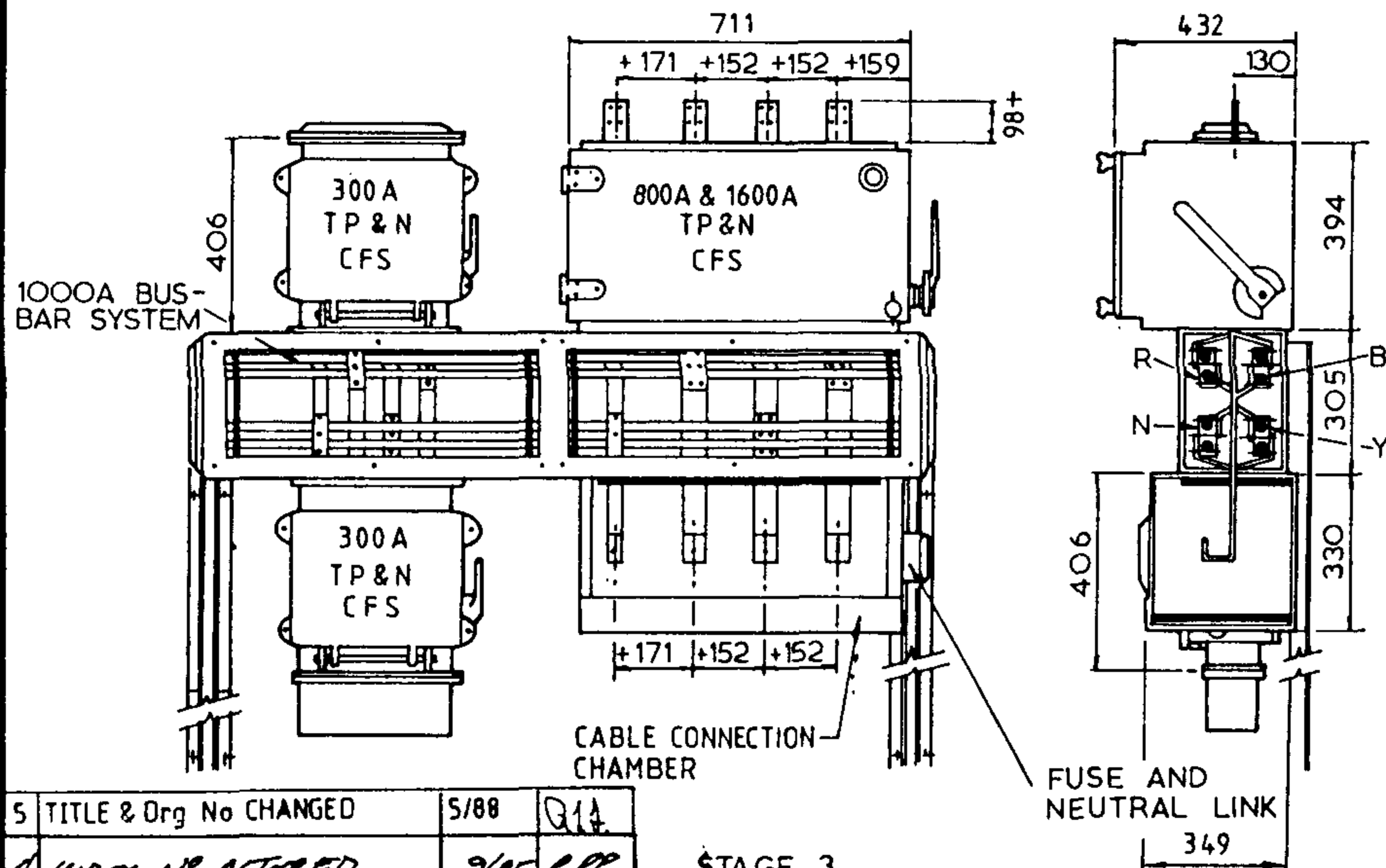
COMPONENTS

ONE (1) 1000A BUSBAR SYSTEM (CIRC. SECT.)
 TWO (2) 300A TP & N. C.F.S. UNITS.
 ONE C.F.S. UNIT TO BE SUPPLIED WITH A CABLE ADAPTOR BOX CAPABLE OF ACCOMMODATING A COMPRESSION GLAND, CABLE SIZE - 195mm².
 THE OTHER C.F.S. UNIT MUST BE PROVIDED WITH A BLANKING PLATE.

NOTES

- 1... THE 1000A BUSBAR SYSTEM MUST BE SUPPLIED WITH ALL FITTINGS FOR CONNECTIONS TO THE TWO 300A C.F.S. UNITS; THE 800A C.F.S. UNITS AND THE LV CABLE CONNECTION CHAMBER.
- 2... THE ENGLISH ELECTRIC H.R.C. FUSE CARTRIDGES SUITABLE FOR USE IN 300A C.F.S. UNITS ARE - CH 300 C.F.S., TC 100, TF 125, TF 160, TF 200, TKF 250 & TKF 300.

APPLICATION - REPLACEMENTS ONLY.



STAGE 3

AMENDMENTS	DATE	INITIAL
5 TITLE & Org No CHANGED	5/88	RJA
4 INDEX NO ALTERED	9/85	RPP
3 REDRAWN & REVISED	8.3.84	FVG

<p>POWER AND WATER AUTHORITY</p>	DES R.HAIGH	NT STANDARD DRAWING	
	DRN R.HAIGH	TITLE FUSES & SWITCHGEAR	
	CKD <i>[Signature]</i>	SWITCHGEAR	
	APPD <i>[Signature]</i>	LV METAL CLAD	
	ISSUED 4.2.86	STAGE 1, 2 & 3	
DRAFTING STANDARD TO A.S. 1100	A3	DRAWING NUMBER S2-1-4-16	
ALL DIM. IN mm	SCALE N.T.S.	SHEET	