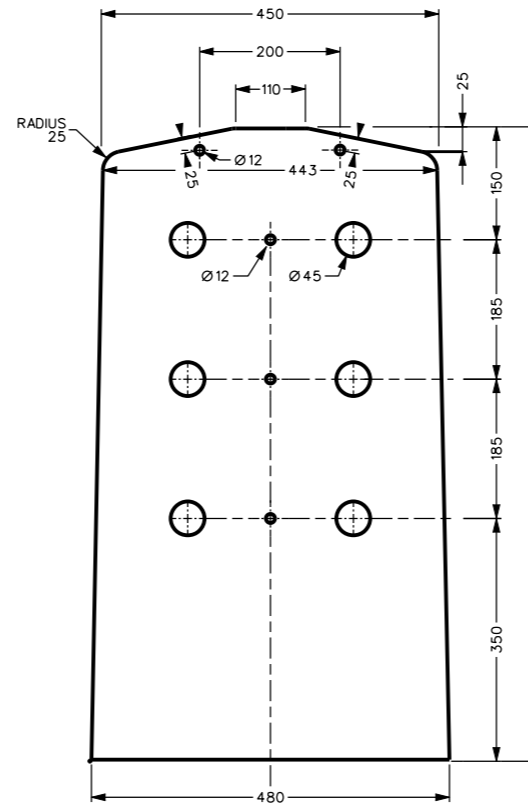
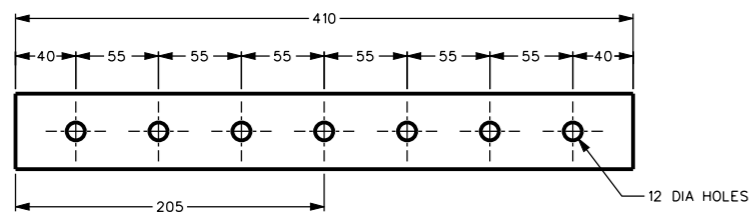


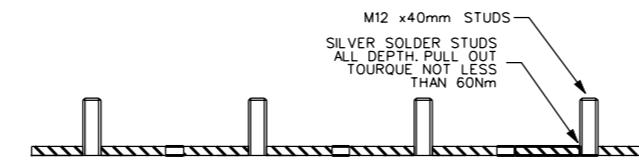
DETAIL 1
SCALE 1:5
PANEL ASSEMBLY



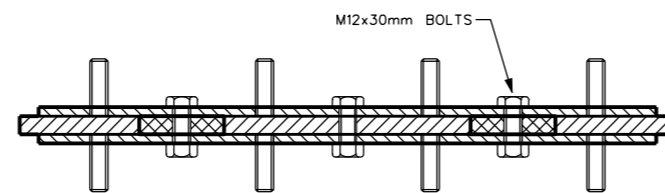
DETAIL 2
SCALE 1:5
PANEL
MATERIAL: 12mm CANVAS BAKELITE



DETAIL 3
SCALE 1:2.5
BUSBAR SECTION
410x50x6.3
COPPER BAR
6 OFF



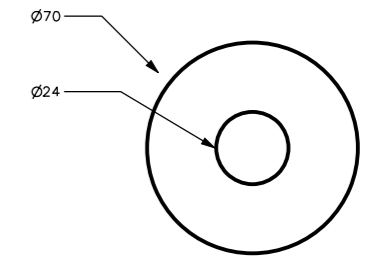
DETAIL 4
SCALE 1:2.5
STUD FIXINGS TO
BUSBAR



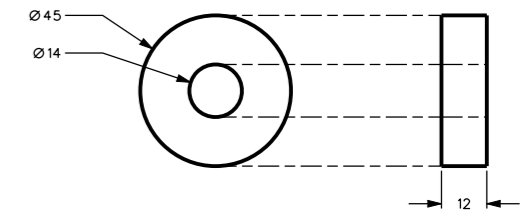
SECTION A-A
SCALE 1:2.5
BUSBAR & PANEL

NOTES

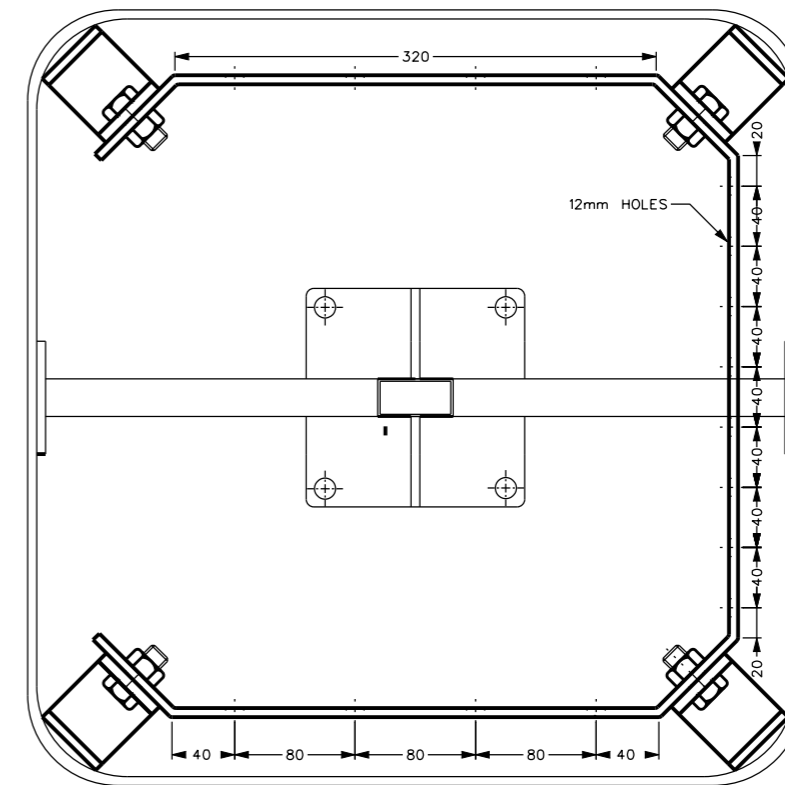
1. Fiberglass cover (stock code 31138) refer to Drg. S2-1-3-6. Note grommet for hole in cover not required.
2. All nuts, bolts, studs & washers to be zinc plated.



COVER SEALS
MATERIAL: INSERTION RUBBER
2mm THICK
2 OFF
SCALE 1:1



COPPER SPACERS
6 OFF
1:1



NEUTRAL BAR ASSEMBLY
SCALE 1:5

1	SUPERSEDED BY S02-2-3-08	J.C.	NOV'10	A.T.	S.C.
NO	DESCRIPTION	DRN	DATE	CKD	APPD
AMENDMENTS					

PowerWater
NORTHERN TERRITORY

DES A. WHYTE POWER STANDARD DRAWING

DRN N. HORDERN

CKD S. SAWYER

APPD F. ROBSON

SCALE AS SHOWN

ISSUED APR'01

ALL DIM. IN mm

DRAFTING STANDARD TO A.S.1100

**FUSED DISTRIBUTION PILLAR
PANEL LAYOUT AND DETAIL**

A3

DRAWING
NUMBER

S02-1-3-08

CAD PRODUCT - DO NOT AMEND MANUALLY

1

AMDT