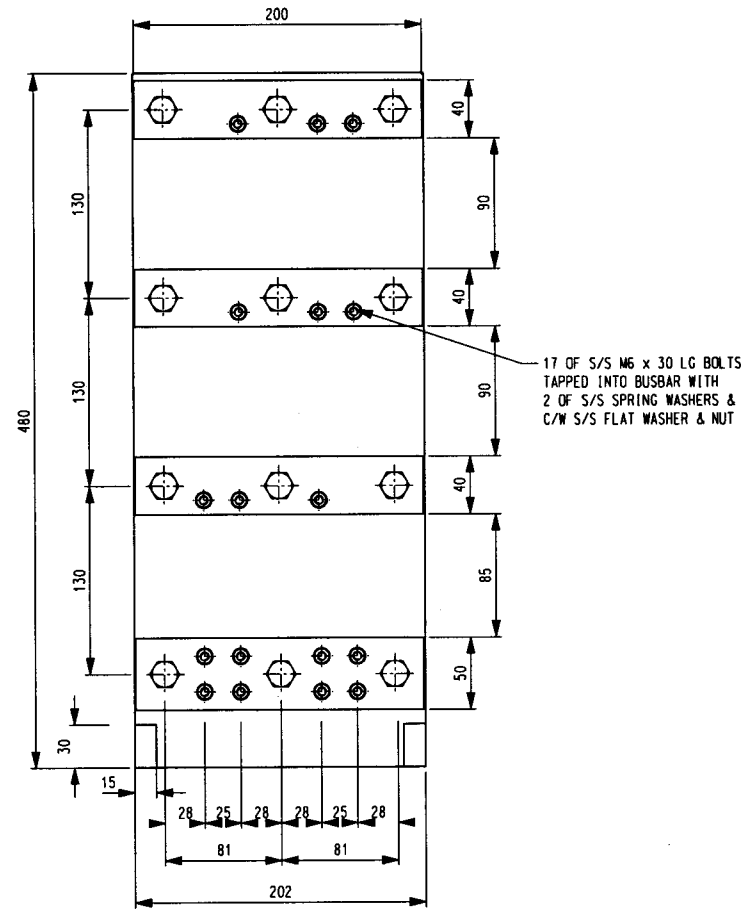


MAINS SIDE:



SERVICE SIDE:

**PANEL PILLAR
RESIDENTIAL DISTRIBUTION**

STOCK CODE 3517

NOTES:

1. FOR PANEL INSTALLATION DETAIL SEE DRG No. S2-2-3-2.
2. BIMETAL LUGS TO BE USED FOR TERMINATING ALUMINIUM CONDUCTOR.
3. PANEL TO BE 400A NOMINAL RATING.
FLAT WASHERS TO BE CAD PLATED STEEL, EXTRA LARGE AS PER AS1237 TABLE 1.

NO	DESCRIPTION	DRN	DATE	CKD	APPD
12	BAKELITE CHANGED TO BRAMITE	K.I.	MAR '05	C.C.	C.C.
11	CENTER PHASE SPACERS NOW TIN/CU	G.M.	JUL '93		
10	TITLE & DRG NUMBER CHANGED	A.F.	MAY '88		
9	ITEM No. 8 STOCK CODE AMENDED	W.T.	MAR '87		
8	STOCK CODE AMENDED	W.T.	JAN '87		
7	BELLVILLE WASHER REMOVED	R.P.	OCT '86		
6	BUSBARS CHANGED TO TINNED COPPER	T.R.	FEB '86		
AMENDMENTS					



DES		POWER STANDARD DRAWING		
DES	J.HASSANEH			
DRN	R.HAIGH			
CKD	G.McSHANAG	DISTRIBUTION PILLARS RESIDENTIAL TYPE PANEL		
APPD	..			
SCALE	NTS			
ISSUED	4.2.86	A3	DRAWING NUMBER	S02-1-3-05
ALL DIM.	IN mm			
DRAFTING STANDARD TO A.S.1100		CAD PRODUCT - DO NOT AMEND MANUALLY		

