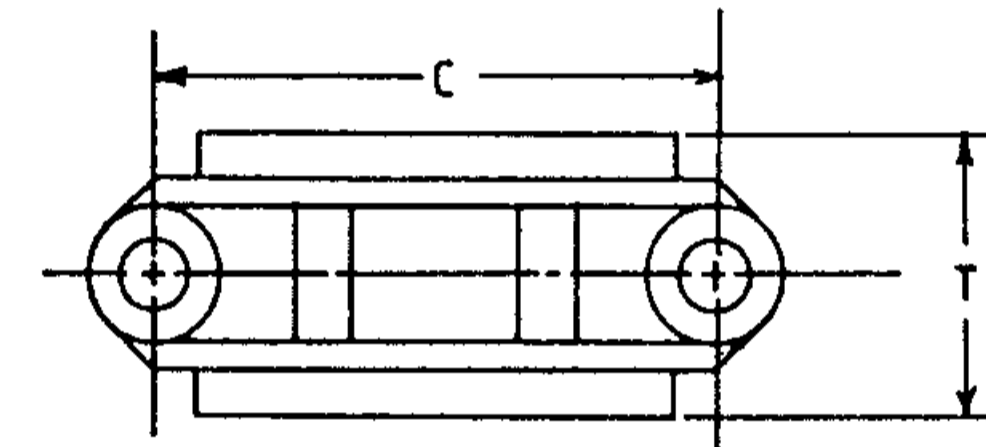
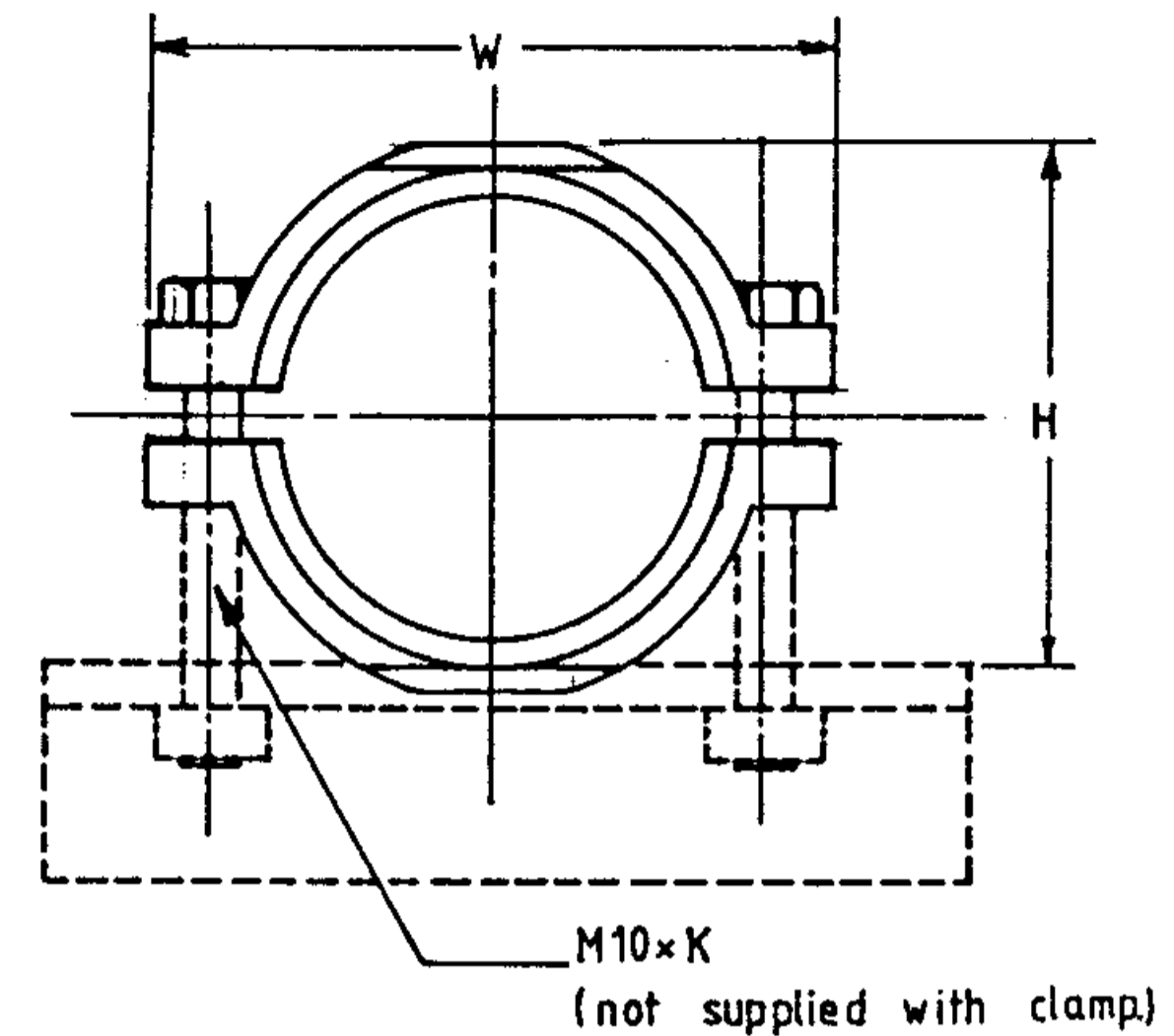
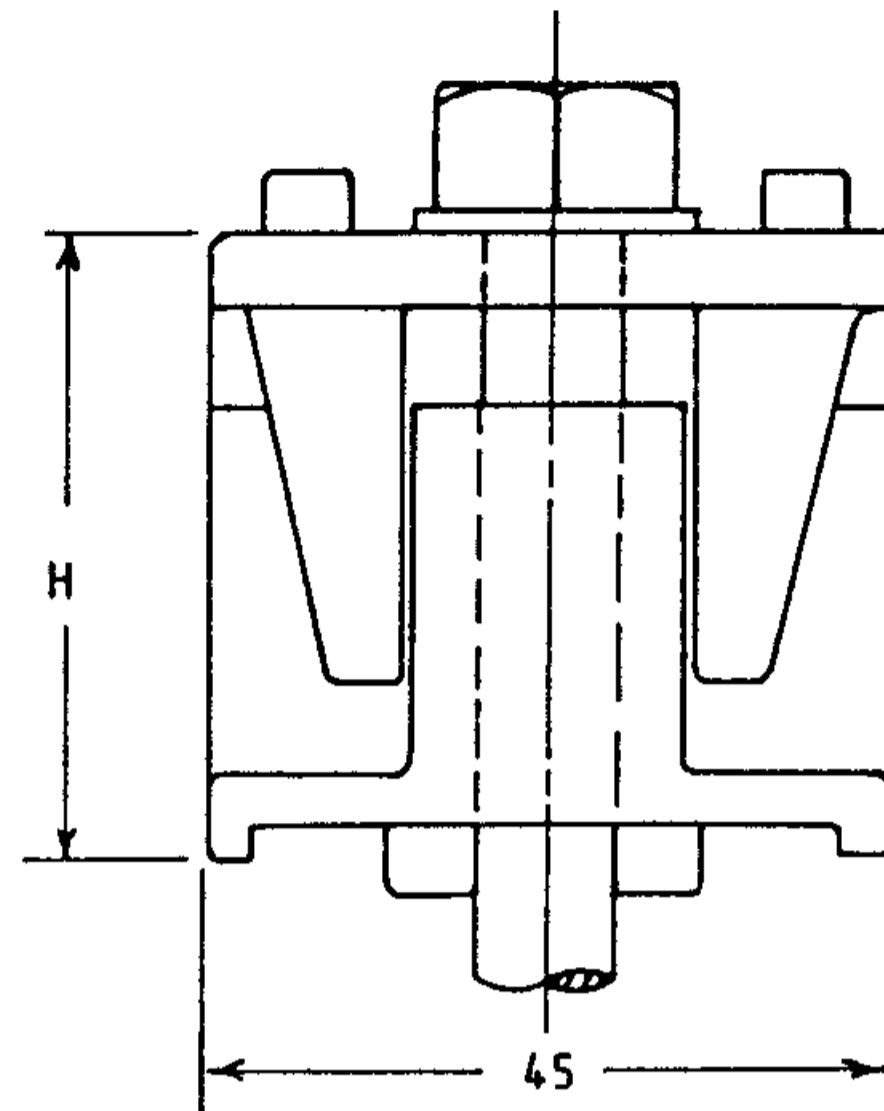
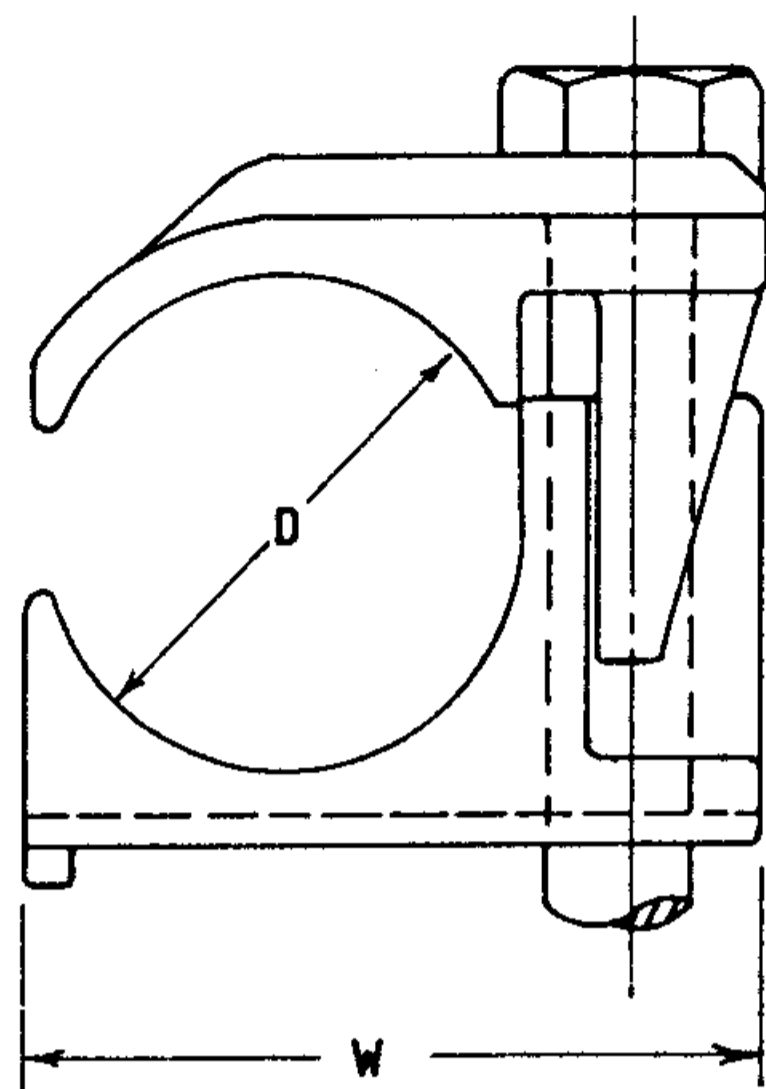


3RD ANGLE — DO NOT SCALE — REPORT ANY ERRORS, OMISSIONS TO DRAFTING OFFICE



ITEM	STOCK CODE	CABUS LIST N°	CABLE DIAMETER D		HEIGHT H.	WIDTH W.	BOLT DIAM.
			MIN.	MAX.			
1	8623	5147	40 mm	47 mm	54 mm	64 mm	3/8"
2	8649	5154	46 mm	54 mm	61 mm	71 mm	3/8"

ITEM	STOCK CODE	LIST N° CABUS	CABLE SIZE M/M	BOLT CENTRE C	WIDTH W	THICKNESS T	MAX. HEIGHT H	BOLT LENGTH K
3	8656	5864	56-64	84	106	45	76	70

ADDITIONAL PARTS LIST		QTY. PER CLEAT UNIT
	DESCRIPTION	
1	NUT M10 HEX HD. CAD PLATED	2
2	WASHER FLAT ROUND M10 CAD PLATE	2
3	SPRING NUT P1008-M10	1
4	ROD M10x3mlg. CAD PLATE.	AS REQ
5	SUPPORT CHANNEL-UNISTRUT STEEL*	AS REQ

NOTE: CABLE CLEATS TO BE COMPATIBLE WITH MILLSTRUT P1000 CHANNEL

SHAPE OF ITEM SIMILAR TO:
CLEATS - CABUS ENGINEERING
ADDITIONAL PARTS - MILLSTRUT

MATERIAL
CLEAT - ALUMINIUM ALLOY - LM-6
ROD - MILD STEEL - CAD PLATED

N°	DESCRIPTION	DATE	INIT.
8	TITLE & Drg NUMBER CHANGED	5/88	Q.H.
7	STOCK CODES AND ITEM NUMBERS ADDED	02/87	Blent
6	INDEX N° ALTERED	8-85	R.P.P.
5	REDRAWN & REVISED	1-85	TR.
AMENDMENTS			

<p>POWER AND WATER AUTHORITY</p> <p>POWER DIRECTORATE</p>	DES R. HAIGH	N.T. STANDARD DRAWING	
	DRN R. SKUZA	TITLE CABLE JOINTING & TERMINATIONS	
	CKD <i>Abelha/27/85</i>	CLEAT - ALUMINIUM	
	APPD <i>wh</i>		
ISSUED 7/11/85	DRAFTING STANDARD TO A.S. 1100	A3	DRAWING NUMBER S2-1-2-8
ALL DIM. IN mm	SCALE N.T.S.	SHEET	AMDT. 8