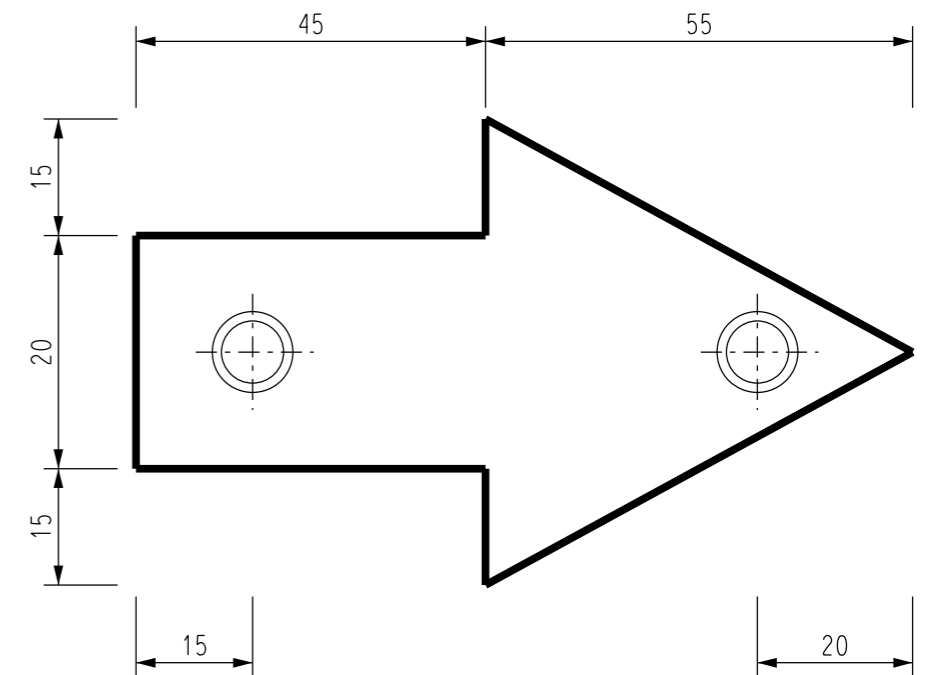


NOTES:

1. HOLES TO SUIT M6 COUNTERSUNK SCREWS.
2. MATERIAL TO BE 6mm ALUMINIUM.
3. LETTERING TO BE CONCAVE TO A DEPTH OF 2mm FILLED TO FLUSH WITH RED EPOXY.
4. 2 ARROWS TO BE SUPPLIED WITH EACH PLATE, POSITIONED TO SHOW CABLE DIRECTION.
5. CABLE ROUTE MARKER AND DIRECTIONAL ARROWS TO BE MOUNTED IN CONCRETE SLAB DIRECTLY OVER CABLES.
6. ARROWS TO INDICATE DIRECTION OF CABLES.

ITEM NUMBER 5066
 ITEM 1 PLATE - (1 OFF)
 ITEM 2 ARROWS - (2 OFF)



12	TITLEBLOCK & DRAWING NUMBER FORMATTED	K.T.	FEB'19	C.C.	C.C.
11	REDRAWN ON CAD AND "POWER and WATER" INSTEAD OF "PAWA"	A.S.	11/02		
10	TITLE AND DRAWING No. CHANGED	Q.L.J.	05/88		
9	REDRAWN AND REDESIGNED	W.T.	06/87		

NO	DESCRIPTION	DRN	DATE	CKD	APPD
AMENDMENTS					



DES	-	POWER STANDARD DRAWING	
DRN	W. TAYLOR	SIGNS DANGER MARKER - CABLE ROUTE	
CKD	-		
APPD	B. KENT		
SCALE	1 : 1.		

ISSUED	11.6.87	A3	DRAWING NUMBER	S02-01-08-04
ALL DIM. IN mm				
DRAFTING STANDARD TO A.S.1100			CAD PRODUCT - DO NOT AMEND MANUALLY	

