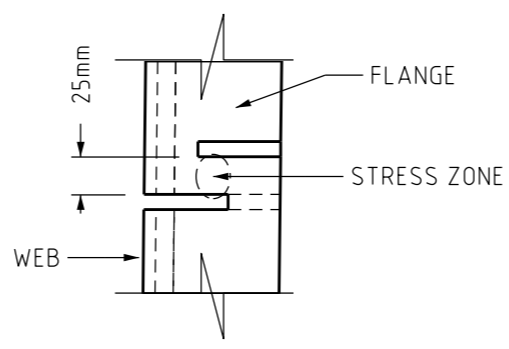
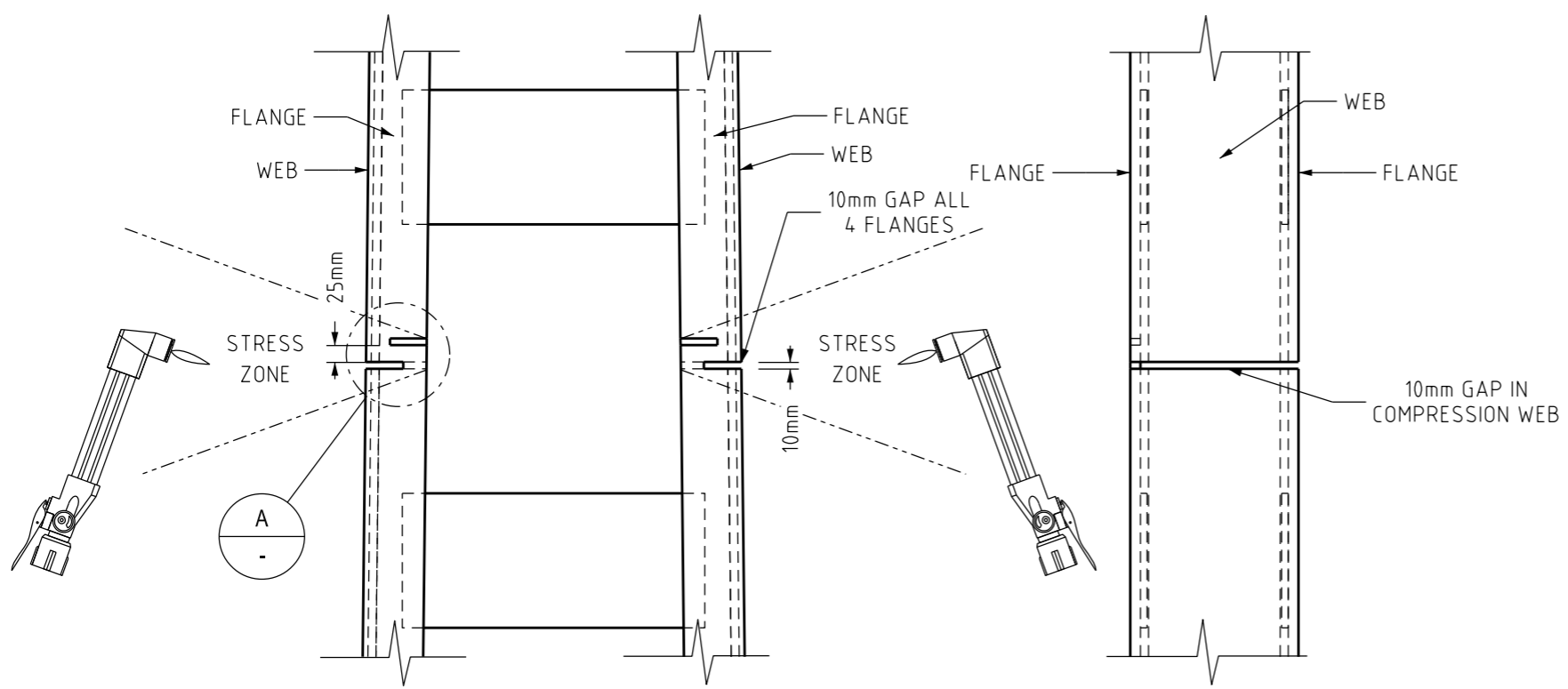


TOP VIEW
1:10

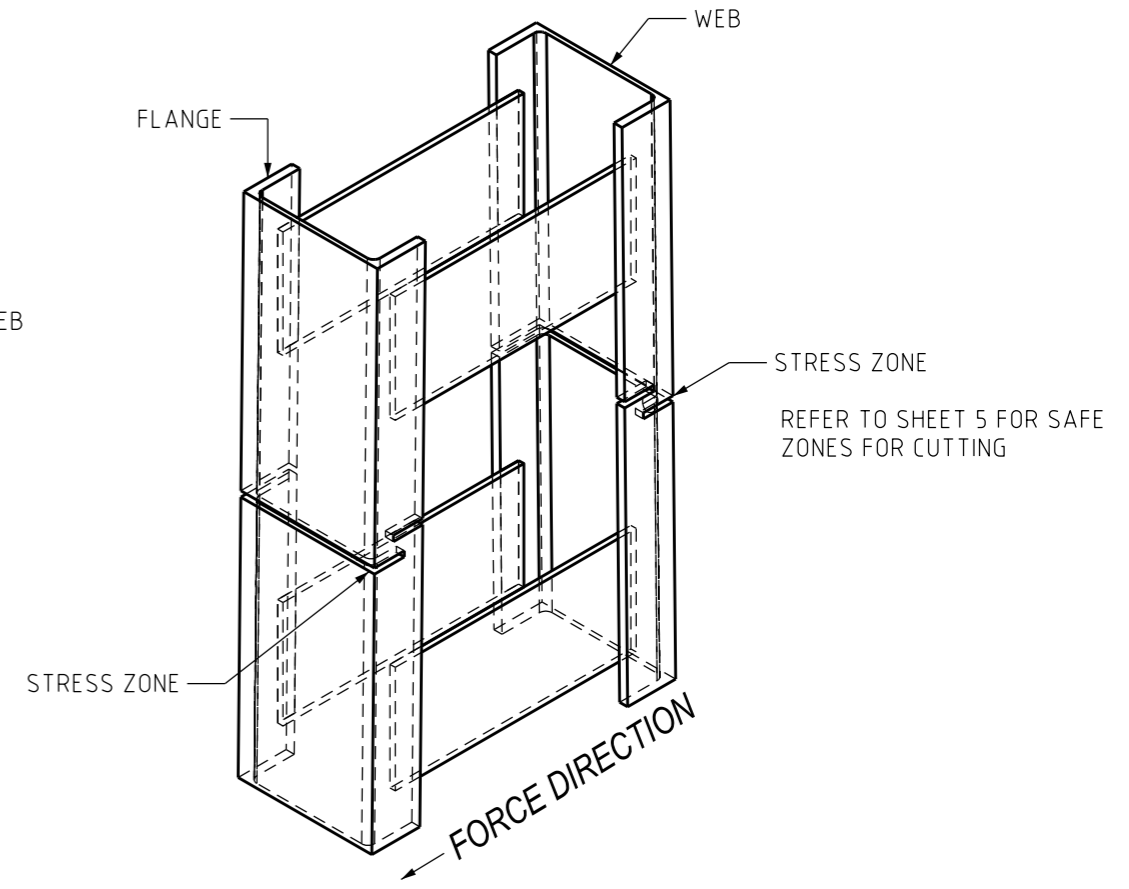


DETAIL A
1:5



FRONT VIEW
1:10

SIDE VIEW
1:10



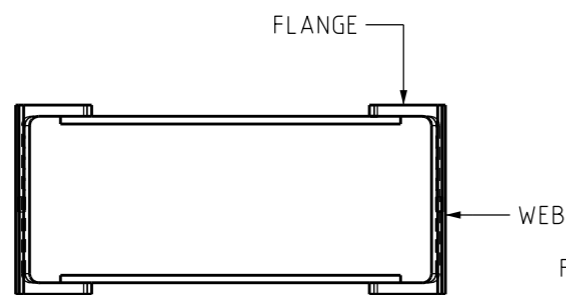
ISOMETRIC WELDED ('A' FRAME) POLE TYPE - A
1:10

- ### A-FRAME - A
1. ENSURE THE POLE IS SAFELY SECURED WITH THE SUPPORT FIXTURE AFTER ALL NECESSARY PROCESSES HAVE BEEN COMPLETED. COMPLETE ALL NECESSARY EXCAVATIONS AS REQUIRED.
 2. MAKE A 10MM WIDE BY 25MM LONG HORIZONTAL CUT INTO THE OUTER EDGES OF THE TWO PFC "C" SECTION FLANGES.
 3. ON A LINE 25MM LOWER MAKE A 10MM WIDE CUT THROUGH THE WEB OF THE PFC (C-SECTION) FOR ITS COMPLETE WIDTH AND CONTINUE FOR 35MM INTO THE TWO FLANGES. THE NEW CUT AND THE EXISTING CUT SHOULD OVERLAP BY APPROXIMATELY 25MM.
 4. REPEAT THIS WORK ON THE OTHER PFC.
 5. WHILST STANDING IN THE SAFE ZONE (REFER TO SHEET 5) USE THE OXY ACETYLENE TORCH TO HEAT THE STRESS ZONE FOR AT LEAST 60 SECONDS, TO A BRIGHT RED TO RELIEVE THE STRESS IN THE POLE.
 6. REPEAT THE PROCESS ON THE OTHER SIDE WHICH SHOULD RELEASE ALL OF THE TENSION IN THE POLE AND ALLOW THE BASE TO BE SAFELY & COMPLETELY CUT FREE.

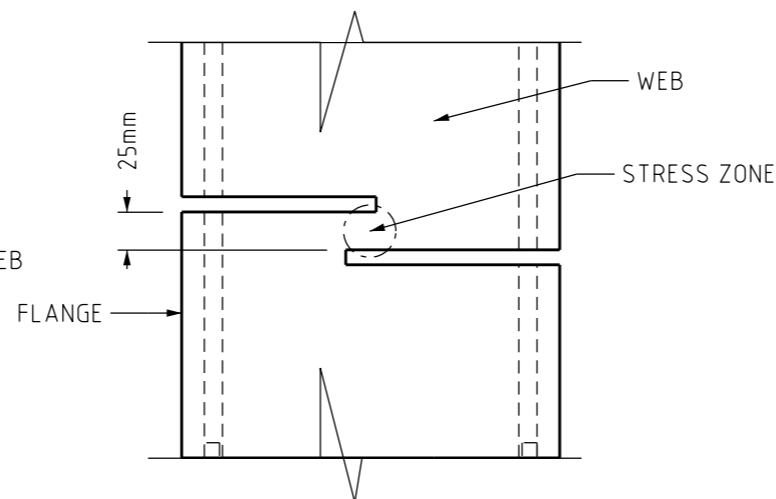
0	ISSUED FOR CONSTRUCTION	C.C.	SEP'21	B.V.	A.N.
NO	DESCRIPTION	DRN	DATE	CKD	APPD
AMENDMENTS					



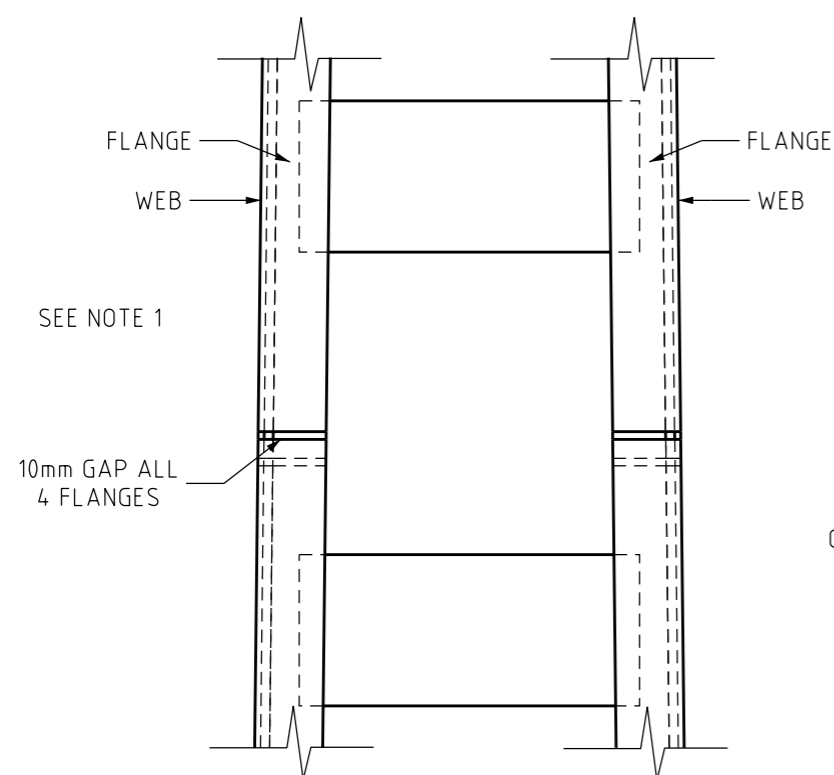
DES	S.CHAOMAN	POWER STANDARD DRAWING			
DRN	C.COPPINS	POWER POLE REHABILITATION			
CKD	B.VANDERSTELT	POLE STRESS RELIEF			
APPD	A.NATHAN	CUTTING SEQUENCE			
SCALE	AS SHOWN	WELDED ('A' FRAME) POLE TYPE - A			
ISSUED	SEPTEMBER 2021	SHEET (1 OF 5)			
ALL DIM. IN mm	A3	DRAWING NUMBER	S01-02-10-35_1		
DRAFTING STANDARD TO A.S.1100		CAD PRODUCT - DO NOT AMEND MANUALLY			AMDT



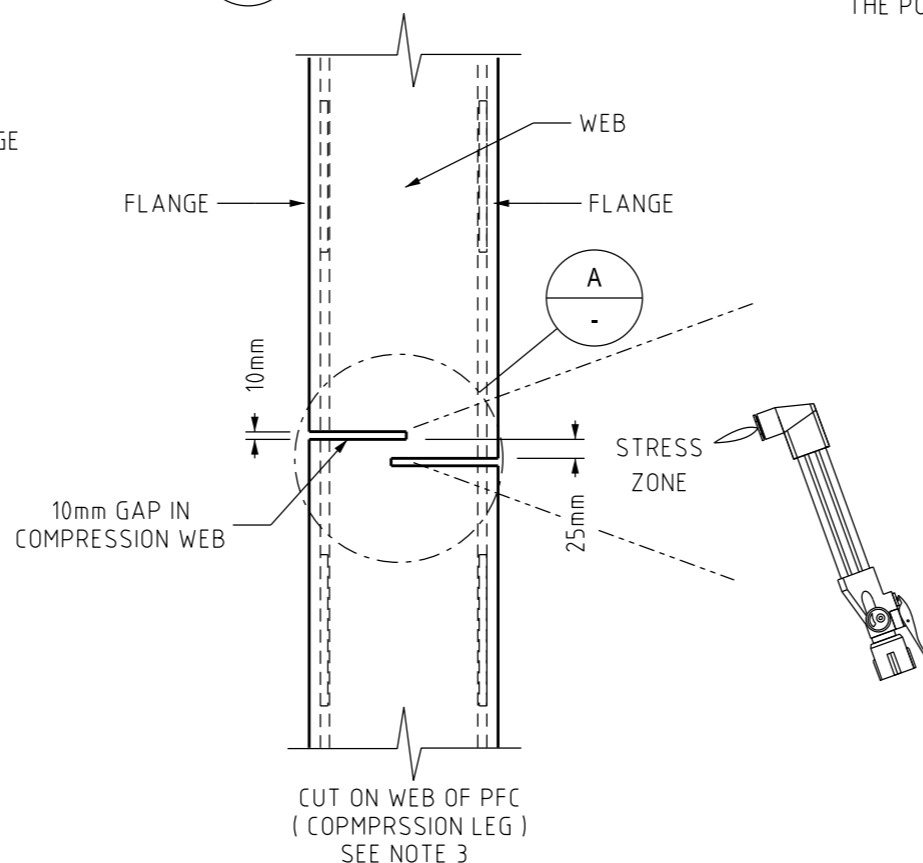
TOP VIEW
1:10



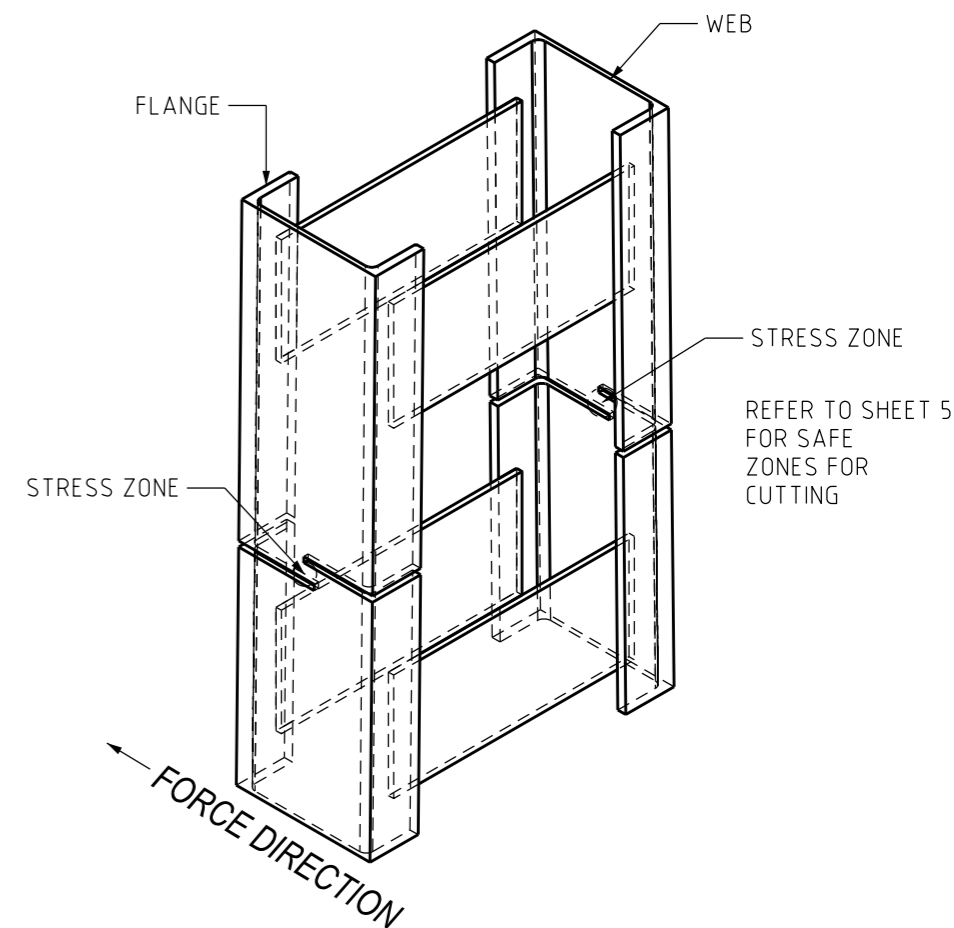
DETAIL A
1:5



FRONT VIEW
1:10



SIDE VIEW
1:10



ISOMETRIC WELDED ('A' FRAME) POLE TYPE - B
1:10

A-FRAME - B

1. ENSURE THE POLE IS SAFELY SECURED WITH THE SUPPORT FIXTURE AFTER ALL NECESSARY PROCESSES HAVE BEEN COMPLETED. COMPLETE ALL NECESSARY EXCAVATIONS AS REQUIRED.
2. MAKE A 10MM WIDE CUT THROUGH ONE OF THE FLANGES ON ONE SIDE OF THE PFC (C-SECTION) AND THEN CONTINUE HALF WAY ACROSS THE WEB.
3. ON THE OTHER SIDE OF THE PFC ON A LINE 25MM LOWER, CUT A 2ND LINE FROM THE EDGE OF THE FLANGE AND THEN AGAIN CONTINUE ACROSS THE WEB TO APPROXIMATELY 25MM PAST THE FIRST CUT.
4. NOW REPEAT THESE CUTS ON THE OTHER PFC.
5. ON THE SIDE OF THE POLE WITH THE TENSION FORCE PUSHING AWAY FROM YOU WHERE THE TWO WEB CUTS OVERLAP, USE THE OXY ACETYLENE TORCH TO HEAT THE STRESS ZONE FOR AT LEAST 60 SECONDS, TO A BRIGHT RED TO RELIEVE THE STRESS IN THE POLE.
6. REPEAT THE PROCESS ON THE OTHER SIDE WHICH SHOULD RELEASE ALL OF THE TENSION IN THE POLE AND ALLOW THE BASE TO BE COMPLETELY CUT FREE.

SEE NOTE 1

10mm GAP ALL 4 FLANGES

10mm GAP IN COMPRESSION WEB

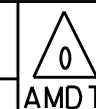
CUT ON WEB OF PFC (COMPRESSION LEG) SEE NOTE 3

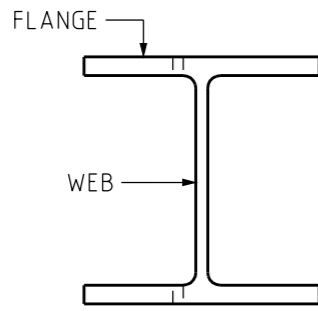
REFER TO SHEET 5 FOR SAFE ZONES FOR CUTTING

0	ISSUED FOR CONSTRUCTION	C.C.	SEP'21	B.V.	A.N.
NO	DESCRIPTION	DRN	DATE	CKD	APPD
AMENDMENTS					

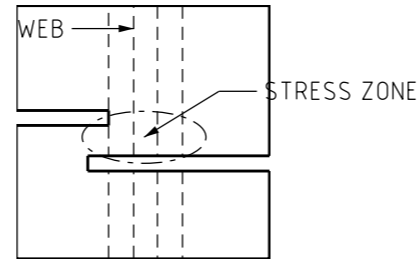


DES	S. CHAOMAN	POWER POLE REHABILITATION			
DRN	C. COPPINS	POLE STRESS RELIEF			
CKD	B. VANDERSTELT	CUTTING SEQUENCE			
APPD	A. NATHAN	WELDED ('A' FRAME) POLE TYPE - B			
SCALE	AS SHOWN	SHEET (2 OF 5)			
ISSUED	SEPTEMBER 2021	A3	DRAWING NUMBER	S01-02-10-35_2	
ALL DIM. IN mm		DRAFTING STANDARD TO A S 1100		CAD PRODUCT - DO NOT AMEND MANUALLY	





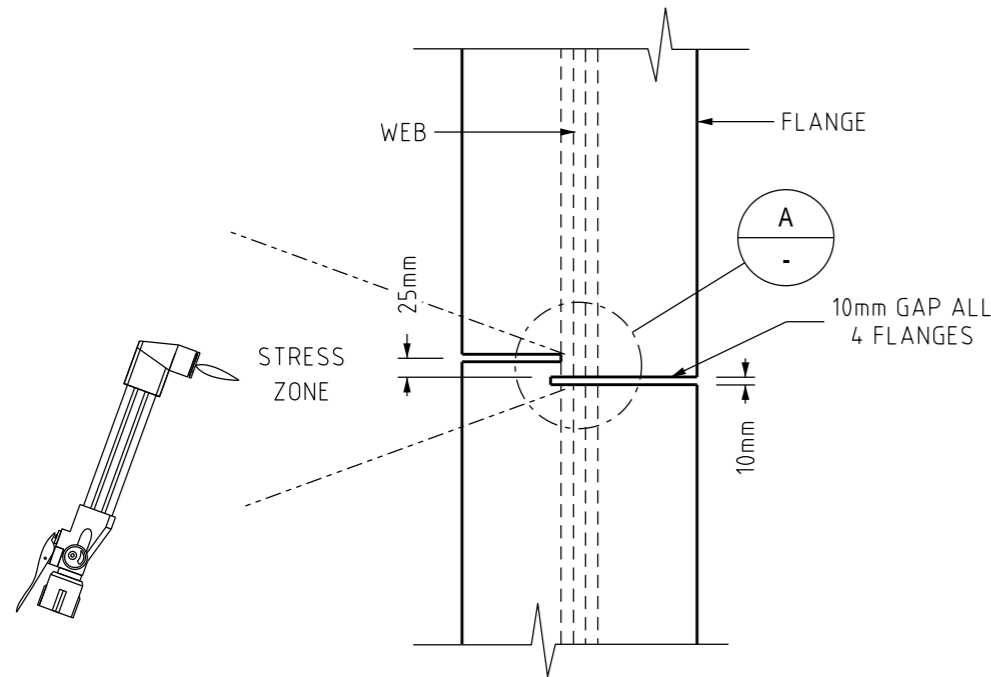
TOP VIEW
1:10



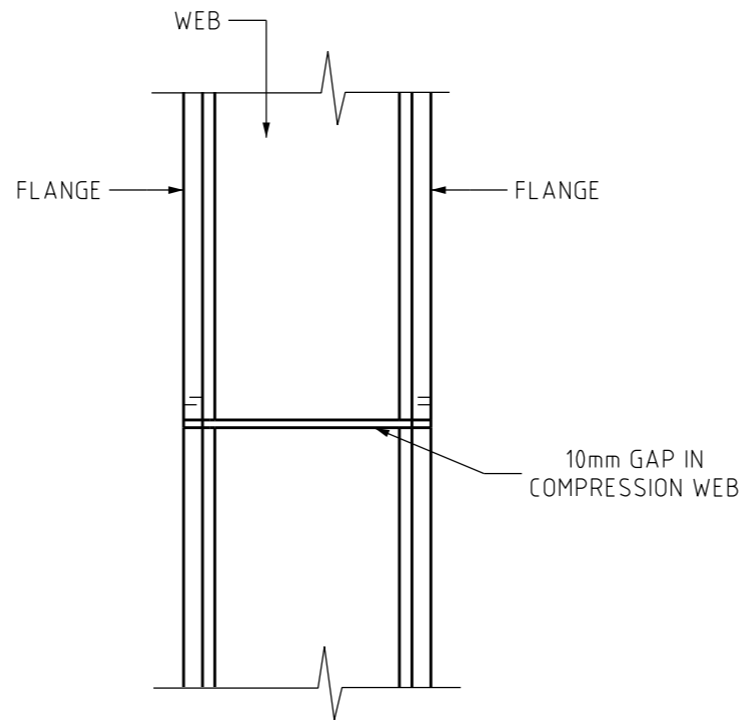
DETAIL A
1:5

IBEAM - A

1. ENSURE THE POLE IS SAFELY SECURED WITH THE SUPPORT FIXTURE AFTER ALL NECESSARY PROCESSES HAVE BEEN COMPLETED. COMPLETE ALL NECESSARY EXCAVATIONS AS REQUIRED.
2. MAKE A 10MM WIDE CUT THROUGH THE WEB OF THE IBEAM FOR ITS COMPLETE WIDTH.
3. MAKE A 10MM WIDE CUT INTO THE L/H HALF OF THE FLANGE 25MM PAST THE INTERSECTING WEB.
4. ON A LINE 25MM LOWER ON THE SAME FLANGE MAKE A 2ND 10MM WIDE CUT IN THE FLANGE TO 25MM PAST THE WEB. NOW REPEAT THESE CUTS ON THE FLANGE ON THE OTHER SIDE OF THE WEB.
5. WHILST STANDING IN THE SAFE ZONE (REFER TO SHEET 5) USE THE OXY ACETYLENE TORCH TO HEAT THE STRESS ZONE TO A BRIGHT RED FOR AT LEAST 60 SECONDS, TO RELIEVE THE STRESS IN THE POLE.
6. REPEAT THE PROCESS ON THE OTHER SIDE WHICH SHOULD RELEASE ALL OF THE TENSION IN THE POLE AND ALLOW THE BASE TO BE SAFELY & COMPLETELY CUT FREE.

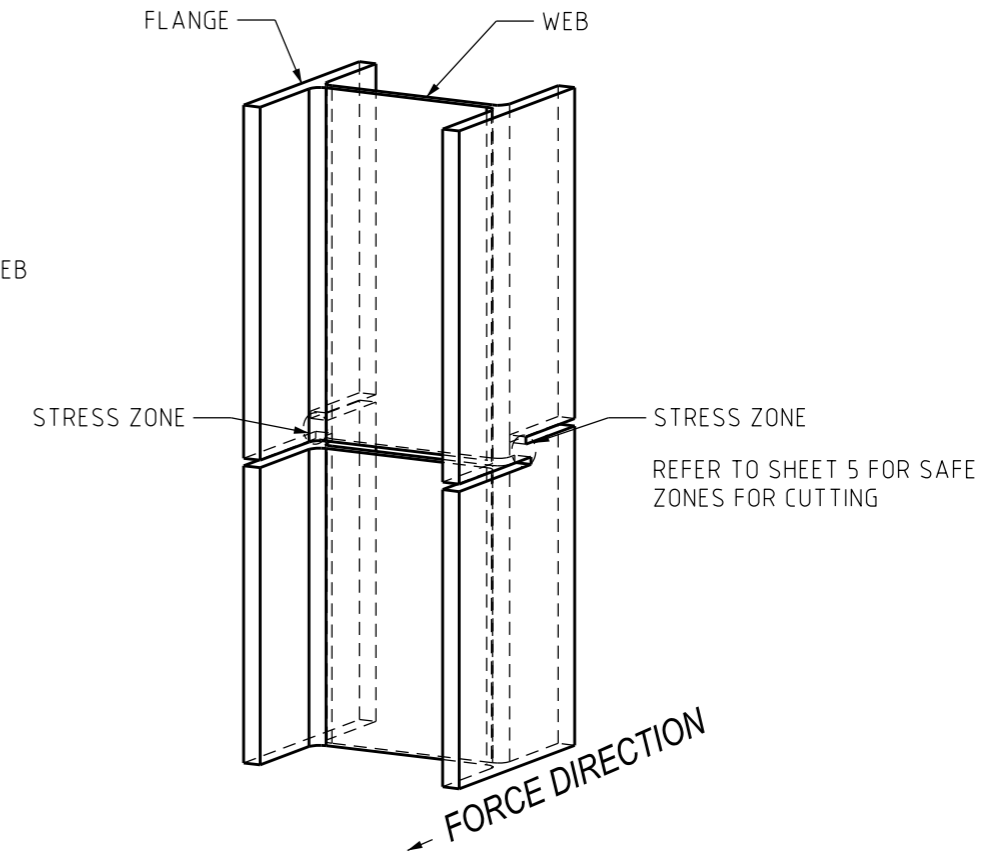


FRONT VIEW
1:10



CUT ON WEB OF PFC (COMPRESSION LEG) SEE NOTE 3

SIDE VIEW
1:10



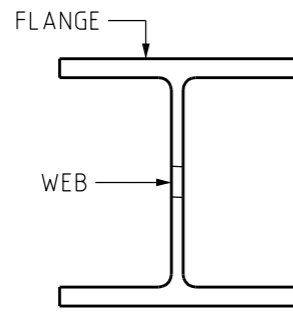
ISOMETRIC IBEAM POLE TYPE - A
1:10

0	ISSUED FOR CONSTRUCTION	C.C.	SEP'21	B.V.	A.N.
NO	DESCRIPTION	DRN	DATE	CKD	APPD
AMENDMENTS					

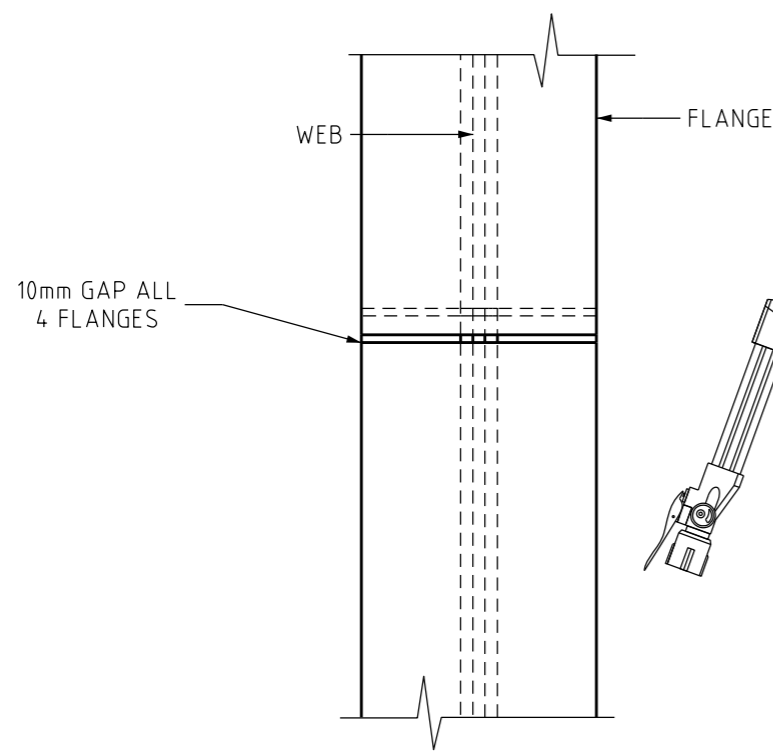
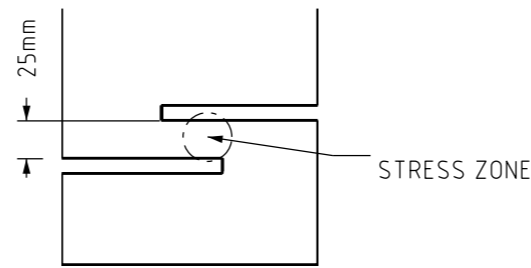


DES	S.CHAOMAN	POWER POLE REHABILITATION			
DRN	C.COPPINS	POLE STRESS RELIEF			
CKD	B.VANDERSTELT	CUTTING SEQUENCE			
APPD	A.NATHAN	IBEAM POLE TYPE - A			
SCALE	AS SHOWN	SHEET (3 OF 5)			
ISSUED	SEPTEMBER 2021	A3	DRAWING NUMBER	S01-02-10-35_3	
ALL DIM.	IN mm	DRAFTING STANDARD TO A S 1100		CAD PRODUCT - DO NOT AMEND MANUALLY	

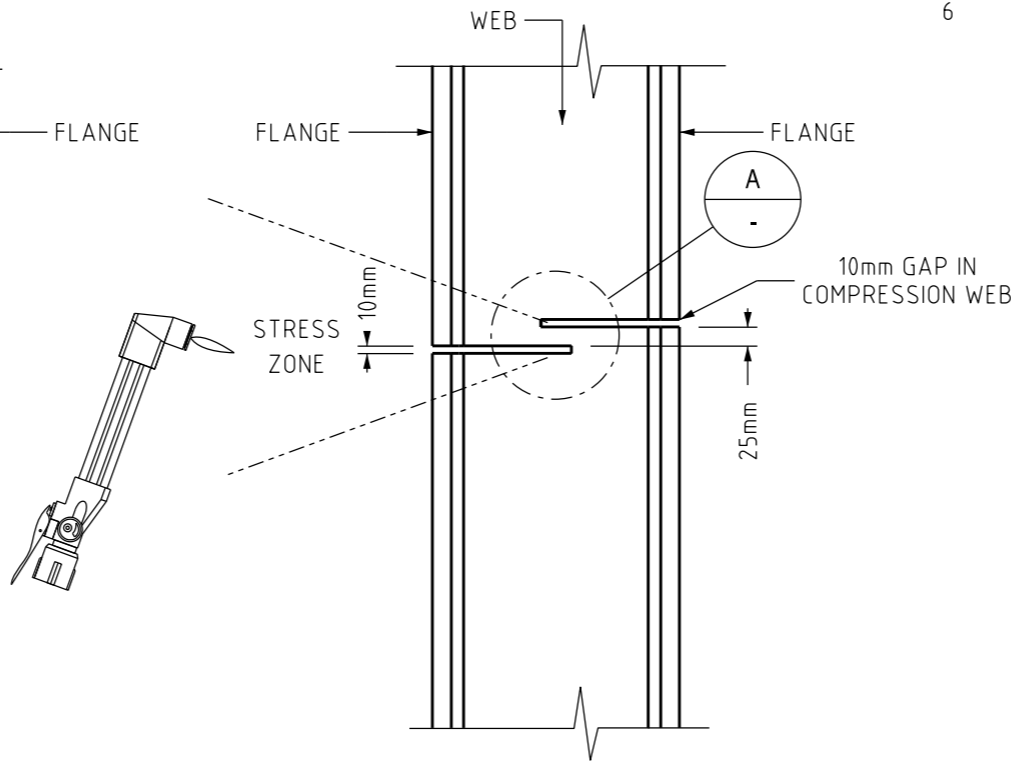




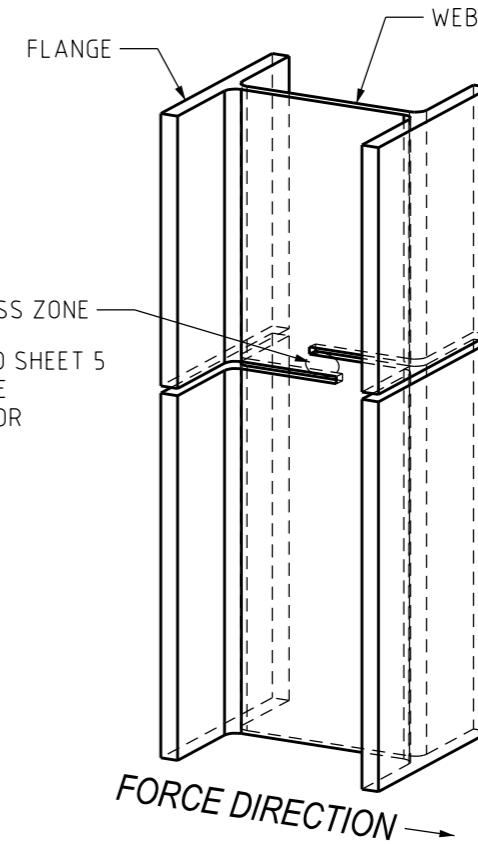
TOP VIEW
1:10



FRONT VIEW
1:10



SIDE VIEW
1:10



ISOMETRIC IBEAM POLE TYPE - B
1:10

IBeam - A

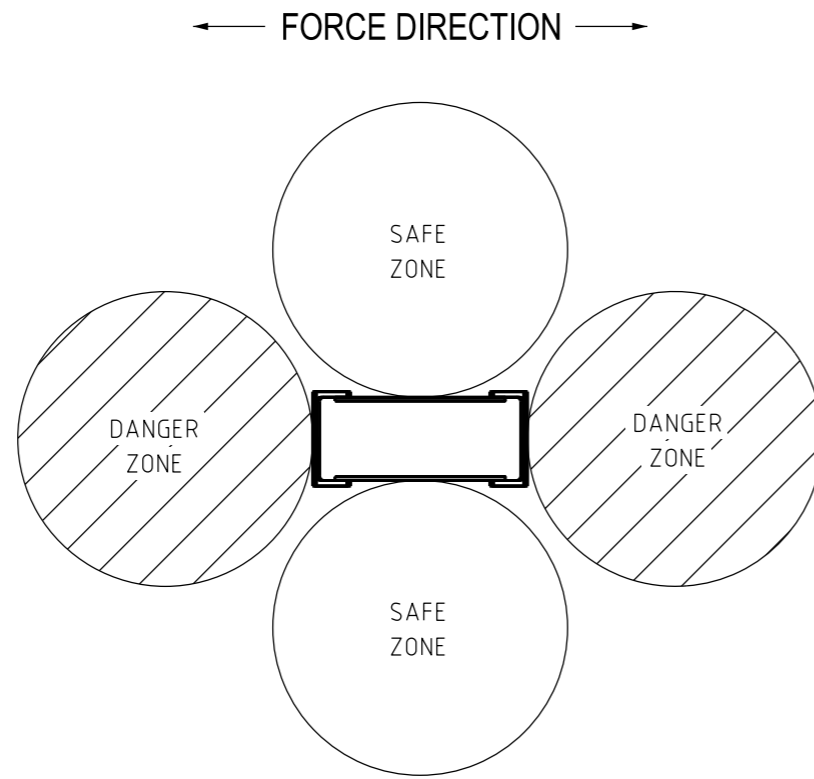
1. ENSURE THE POLE IS SAFELY SECURED WITH THE SUPPORT FIXTURE AFTER ALL NECESSARY PROCESSES HAVE BEEN COMPLETED. COMPLETE ALL NECESSARY EXCAVATIONS AS REQUIRED.
2. MAKE A 10MM WIDE CUT THROUGH A FLANGE OF THE I-BEAM FOR ITS COMPLETE WIDTH. THEN ON A LINE 25MM LOWER ON THE OPPOSITE FLANGE MAKE THE SAME CUT.
3. FROM THE 1ST FLANGE CUT POSITION MAKE A 10MM WIDE CUT INTO THE WEB 25MM TO PAST THE CENTRE OF THE WEB.
4. FROM THE OPPOSITE FLANGE CUT MAKE A 2ND 10MM WIDE CUT IN THE WEB THAT FINISHES 25MM PAST THE END OF THE FIRST WEB CUT SO THEY OVERLAP WITH A 25MM UNCUT SECTION BETWEEN.
5. ON THE SIDE OF THE FLANGE WITH THE TENSION FORCE PUSHING AWAY FROM YOU, USE THE OXY ACETYLENE TORCH TO HEAT THE STRESS ZONE TO A BRIGHT RED, FOR AT LEAST 60 SECONDS, TO RELIEVE THE STRESS IN THE POLE.
6. ONCE THE POLE HAS STRETCHED AND RELEASED THE TENSION YOU CAN CUT THE REMAINING SECTION ALLOW THE BASE TO BE REMOVED.

0	ISSUED FOR CONSTRUCTION	C.C.	SEP'21	B.V.	A.N.
NO	DESCRIPTION	DRN	DATE	CKD	APPD
AMENDMENTS					

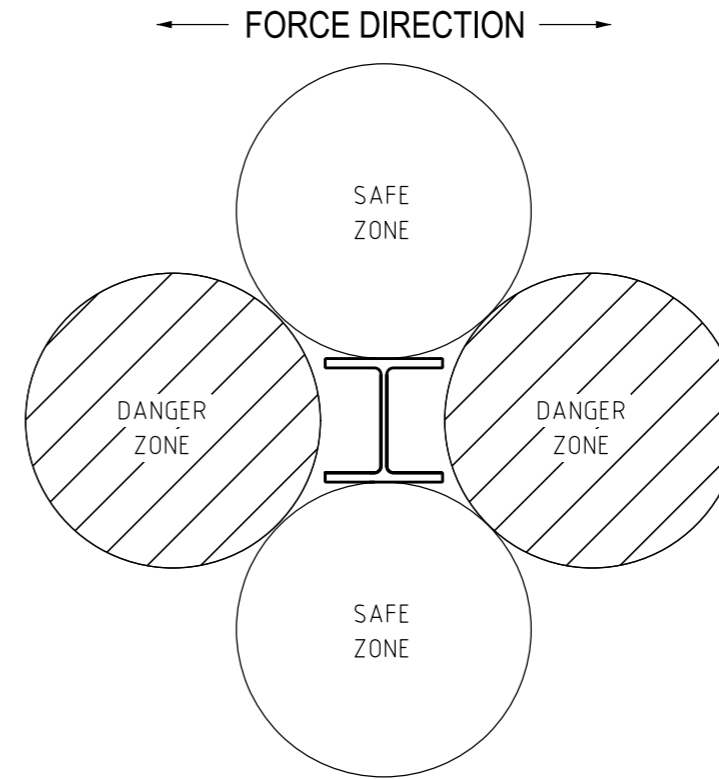


DES	S.CHAOMAN	POWER POLE REHABILITATION			
DRN	C.COPPINS	POLE STRESS RELIEF			
CKD	B.VANDERSTELT	CUTTING SEQUENCE			
APPD	A.NATHAN	IBEAM POLE TYPE - B			
SCALE	AS SHOWN	SHEET (4 OF 5)			
ISSUED	SEPTEMBER 2021	A3	DRAWING NUMBER	S01-02-10-30_4	
ALL DIM. IN mm		DRAFTING STANDARD TO A S 1100		CAD PRODUCT - DO NOT AMEND MANUALLY	

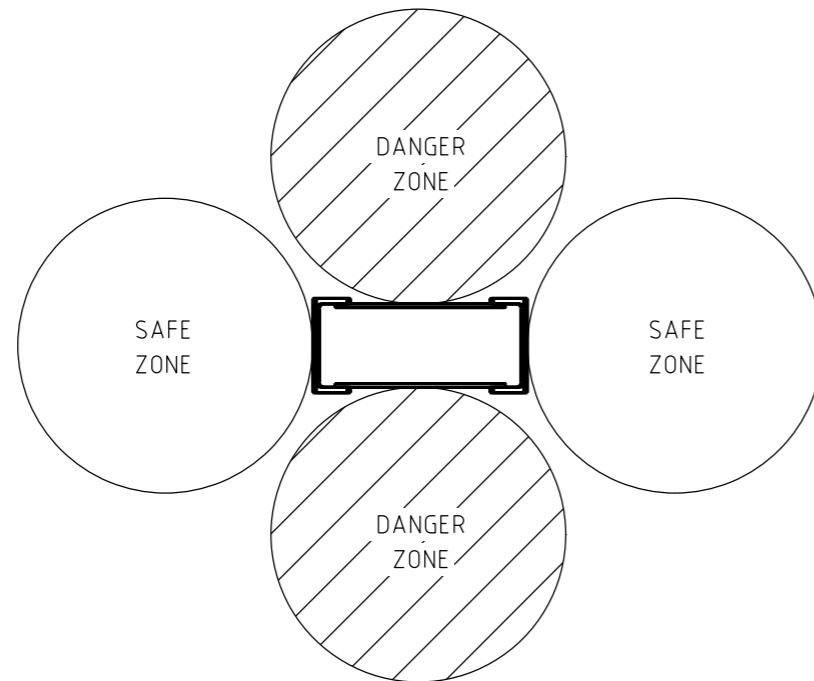




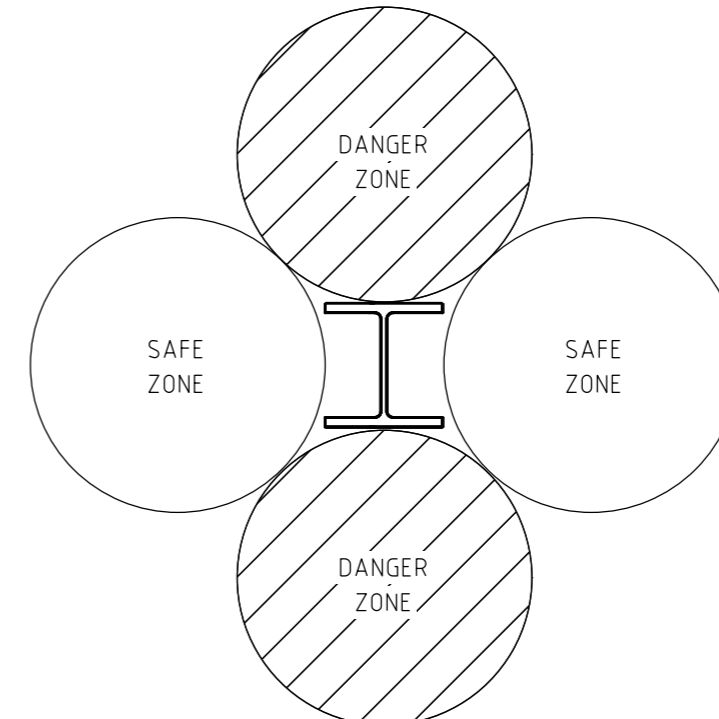
WELDED (A-FRAME) POLE TYPE - A
N.T.S.



IBEAM POLE TYPE - A
N.T.S.



WELDED (A-FRAME) POLE TYPE - B
N.T.S.



IBEAM POLE TYPE - B
N.T.S.

0	ISSUED FOR CONSTRUCTION	C.C.	SEP'21	B.V.	A.N.
NO	DESCRIPTION	DRN	DATE	CKD	APPD
AMENDMENTS					



DES	S.CHAQMAN
DRN	C.COPPINS
CKD	B.VANDERSTELT
APPD	A.NATHAN
SCALE	AS SHOWN
ISSUED	SEPTEMBER 2021
ALL DIM. IN	mm
DRAFTING STANDARD TO A S 1100	

POWER POLE REHABILITATION
POLE STRESS RELIEF
CUTTING SEQUENCE
SAFE & DANGER ZONES
SHEET (5 OF 5)

A3 DRAWING NUMBER S01-02-10-35_5

CAD PRODUCT - DO NOT AMEND MANUALLY

