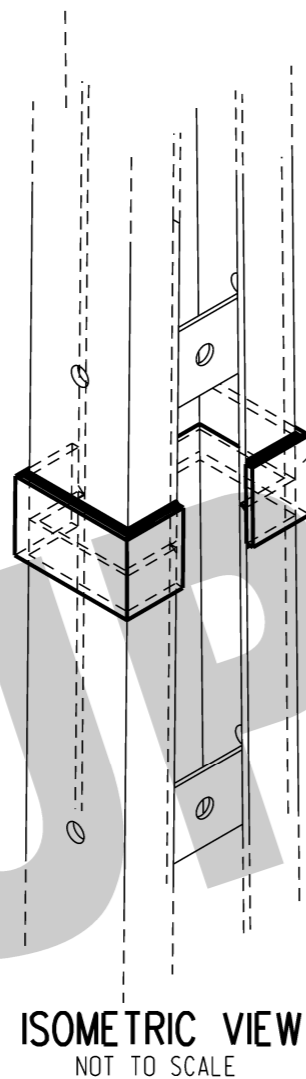


LINE POLE 16.5D - ITEM NUMBER : 298505

SCALE 1:48

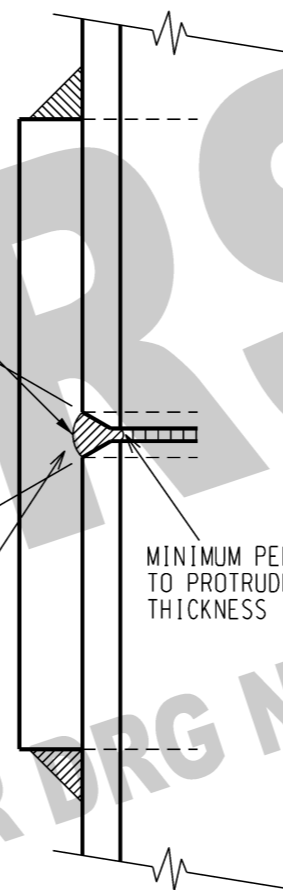
NOTES

1. ALL WELDS TO 6mm CONTINUOUS AND TO COMPLY WITH AS 1554.
2. STEEL TO BE GRADE 300 PLUS.
3. THIS DRAWING IS TO BE READ IN CONJUNCTION WITH S01-01-01-14 FOR FURTHER NOTES AND CONSTRUCTION DETAILS.
4. THE WELDED AREA IS TO HAVE APPLIED A KILL RUST SUPERIOR PROTECTION, EPOXY ENAMEL OR SIMILAR CORROSION PREVENTATIVE PRODUCT.
5. ALL WELDED EXTENSIONS ARE TO BE IN THE TOP 1/3 OF THE POLE AND ARE TO BE LOCATED BETWEEN POLE BRACES.



100 x 10 PLATE

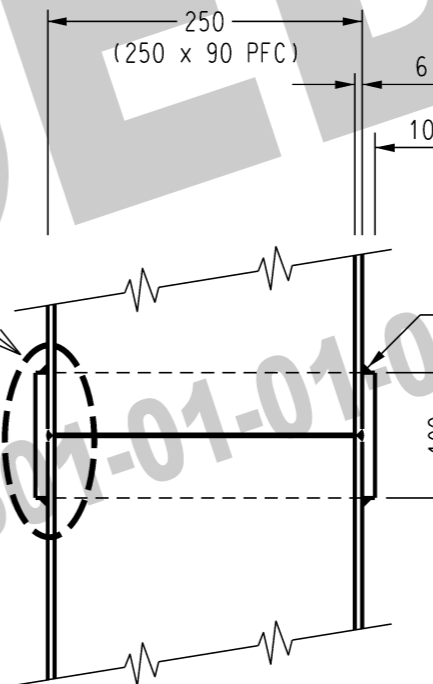
BUTT WELD TO BE GROUND LEVEL WITH 250 x 90 PFC



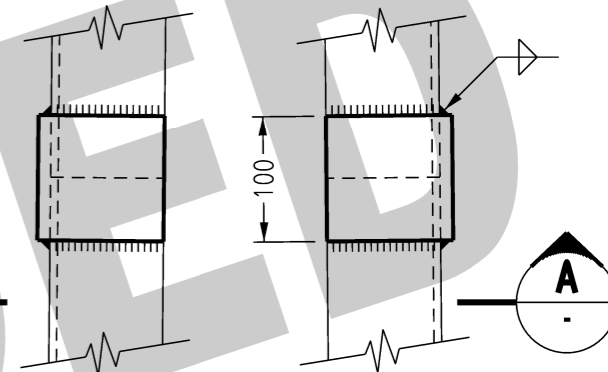
DETAIL '2'
SCALE 1:1

MINIMUM PENETRATION TO PROTRUDE PAST WEB THICKNESS

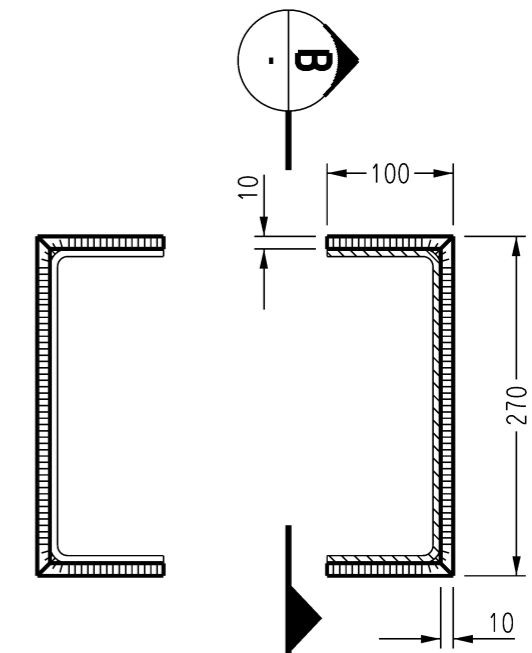
DETAIL '2'



VIEW B
SCALE 1:5



DETAIL '1'
SCALE 1:5



VIEW A
SCALE 1:5

| NO | DESCRIPTION | DRN | DATE | CKD | APPD |
|------------|---------------------------------------|------|---------|------|------|
| 3 | SUPERSEDED | C.C. | MAY'20 | B.V. | B.V. |
| 2 | TITLEBLOCK & DRAWING NUMBER FORMATTED | K.T. | DEC'18 | C.C. | C.C. |
| 1 | 13ø HOLES FOR PADLOCK ADDED | K.I. | OCT'05 | C.C. | C.C. |
| 0 | ISSUED FOR CONSTRUCTION | A.S. | 20.2.02 | M.B. | M.B. |
| AMENDMENTS | | | | | |

PowerWater
NORTHERN TERRITORY

| | |
|-------------------------------|------------|
| DES | M. BOCK |
| DRN | R. INNES |
| CKD | R. CLEOPAS |
| APPD | M. BOCK |
| SCALE | 1:48 |
| ISSUED | JULY '00 |
| ALL DIM. | IN mm |
| DRAFTING STANDARD TO A.S.1100 | |

**POLES
LINE 16.5D JOINTED
BOLTED CONNECTIONS TYPE**

A3 DRAWING NUMBER **S01-01-01-17**

CAD PRODUCT - DO NOT AMEND MANUALLY

