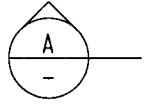


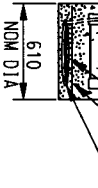
Scale 1:40

ELEVATION



Scale 1:40

SECTION

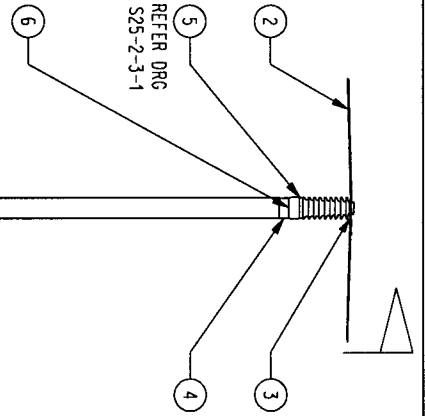


INSTALL DAMP PROOF COURSE OVER COIL. COIL 2m OF CU 19/2.14 70 sq.mm BARE AND JOIN WITH COMPRESSION CONNECTOR PROFILE 'C' STOCK NO. 255786.

REFER EARTHING ATTACHMENT AS PER STD DRG S1-2-3-2

**NOTES:**

1. ALL CROSSARMS AND BRACKETS FIXED TO THE POLE. USE A 6mm FILLET WELD ALL ROUND WITH E41XX ELECTRODES UNO.
2. POLE AND ABS WELD POINTS TO BE GROUND TO CLEAN STEEL PRIOR TO WELDING. WELDS TO BE COLD GALVANISED WITH ZINC RICH PAINT.
3. ALL WELDING IS TO COMPLY WITH AS 1554.
4. FOR POLE LOADINGS REFER VOLUME 1 DESIGN DATA.



12	1	DAMP PROOF MEMBRANE		NEW
11	1	CLIP HALF SADDLE		81711
10	1	CONDUIT FLEXIBLE 20mm		3996
9	1	Cu CONDUCTOR, 19/2.14, 70sq.mm	S1-1-5-5	9803
8	1	LUG COPPER COMPRESSION 70sq.mm 19/2.14	S1-2-3-11	5512
7	1	M12 BOLT, WASHER AND NUT (welded to inside of pole channel)		114462
6	1	M24 BOLT X 50 LONG (cw nuts, spring & flat washers)		114629
5	1	LINE POST INSULATOR, 33kv (refer Morlynn drg no H11461)		NEW
4	1	INSULATOR MOUNTING BRACKET (150 PFC welded to pole)	S25-2-3-1	NEW
3	1	TIE WIRE	S1-2-1-2	8839
2	-	CONDUCTOR 3/2.75 SC/AC OR 3/4/2.50ACSR/GZ		8748/1610
1	1	13.5B POLE, 13.5m LONG	S1-1-1-2	11114

2	ITEM 8 Q/LUG CHANGED TO COMPRESSION. APPROVED FOR CONSTRUCTION.	K.I. RGI	FEB'05 SEP'99	C.C MWB	C.C FRR
NO	DESCRIPTION	DRN	DATE	CKD	APPD
AMENDMENTS					



DES	M. BOCK	<b>POWER STANDARD DRAWING</b>			
DRN	R. INNES	SINGLE WIRE EARTH RETURN LINE POLE 13.5B CONSTRUCTION			
CKD	S. SAWYER				
APPD	F. ROBSON				
SCALE	1:40				
ISSUED	21/10/97	A3	DRAWING NUMBER	S25-1-1-05	2 AMD
ALL DIM. IN mm					
DRAFTING STANDARD TO A.S.1100			CAD PRODUCT - DO NOT AMMEND MANUALLY		