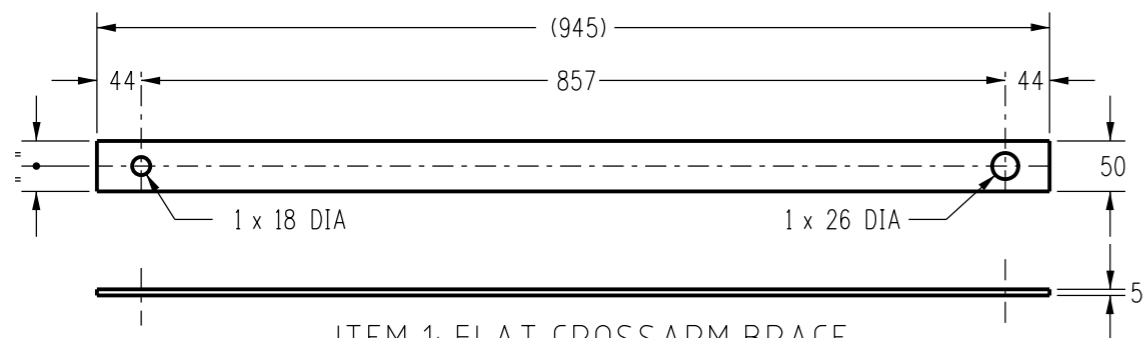
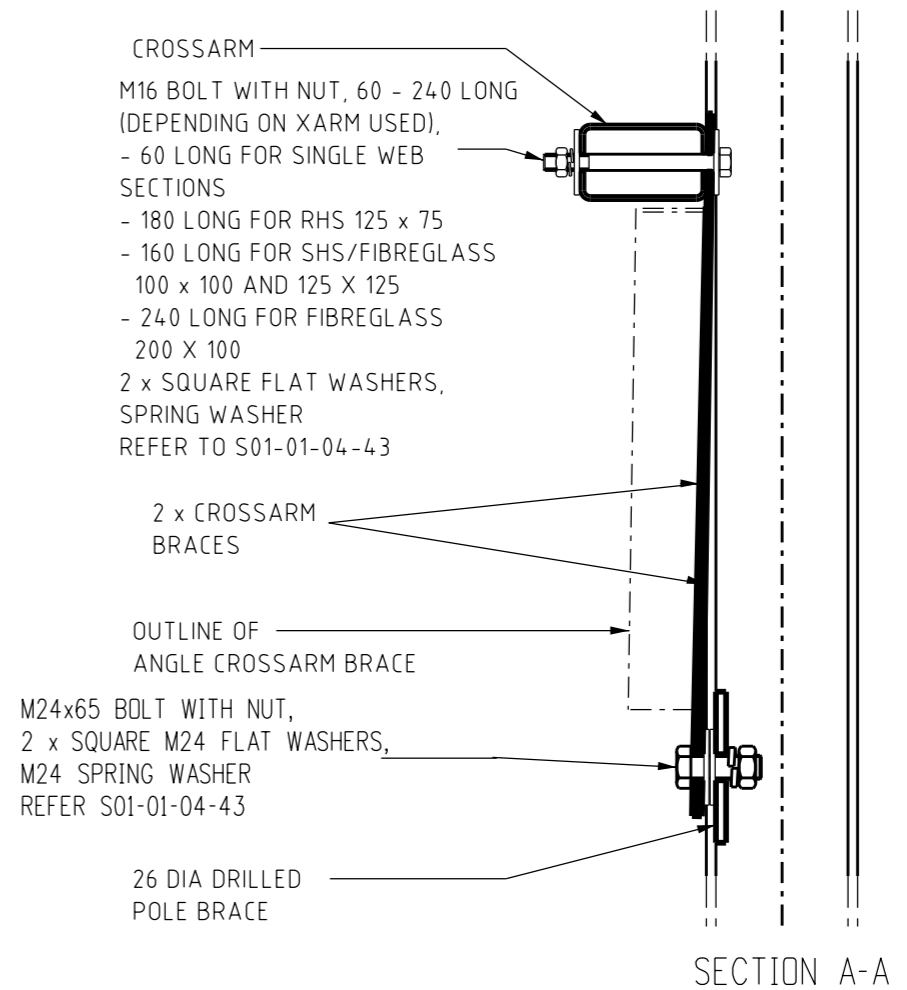
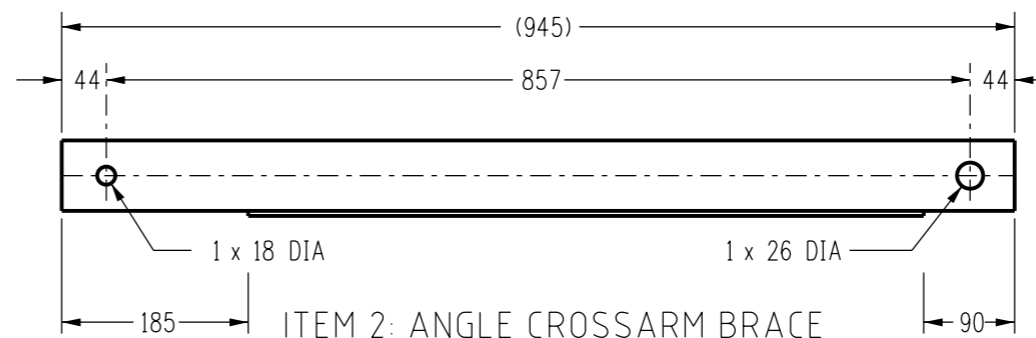


BRACE CONNECTION DETAIL



MATERIAL: 50 x 5 CF
DURAGAL ITEM NUMBER : 298687
HOT DIPPED GALVANIZED ITEM NUMBER: 411554



MATERIAL: 75 x 75 x 5 CA
DURAGAL ITEM NUMBER : 400815
HOT DIPPED GALVANIZED ITEM NUMBER: 411547

ITEM 3: LARGE FLAT WASHER

MATERIAL: 5 PLATE GALVANISED STEEL
M16 65x65mm ITEM NUMBER : 298695
M24 75X75mm ITEM NUMBER : 298828
REFER TO S01-01-04-43

M24 GALV. STEEL SPRING WASHER	114330
M24x65 GALV. STEEL BOLT C/W NUT	400800
M16 GALV. STEEL SPRING WASHER	114322
M16x240 GALV. STEEL BOLT C/W NUT	500857
M16x180 GALV. STEEL BOLT C/W NUT	114561
M16x160 GALV. STEEL BOLT C/W NUT	400805
M16x60 GALV. STEEL BOLT C/W NUT	500875
ITEM DESCRIPTION	ITEM NUMBER

HARDWARE LIST

NO	DESCRIPTION	DRN	DATE	CKD	APPD
8	REFORMATTED NOTES, UPDATED DRAWING REFERENCES. ADDED M24 SQUARE WASHER & HARDWARE TABLE.	A.N.	JUL'21	A.N.	B.C.
7	TITLEBLOCK & DRAWING NUMBERS FORMATTED	K.T.	JAN'19	C.C.	C.C.
6	ADDITIONAL USAGES OF ANGLE CROSSARM BRACE	A.T.	APR'13	B.C.	B.C.
5	HOT DIPPED GALVANIZED ITEMS, M16 BOLT LENGTHS ADDED	A.T.	NOV'11	B.C.	S.C.
4	DWG. No. CHANGED FROM S01-01-04-38 TO S01-02-01-38 AND TITLE CHANGED FROM LINE HARDWARE TO ASSEMBLIES	A.S.	JAN'04	R.C.	M.B.
3	WEB CUT-BACK ON ANGLE BRACE CHANGED FROM 150 TO 185	A.S.	JAN'04	M.B.	M.B.
AMENDMENTS					

PowerWater
NORTHERN TERRITORY

DES	M. BOCK
DRN	R. INNES
CKD	M. BOCK
APPD	F. ROBSON
SCALE	JULY'00
ISSUED	1 : 7.5
ALL DIM. IN mm	
DRAFTING STANDARD TO A.S.1100	

POWER STANDARD DRAWING

ASSEMBLIES
CROSSARM BRACES AND DETAILS
FOR UNIVERSAL POLE CONSTRUCTION

A3 DRAWING NUMBER S01-02-01-49

CAD PRODUCT - DO NOT AMEND MANUALLY

