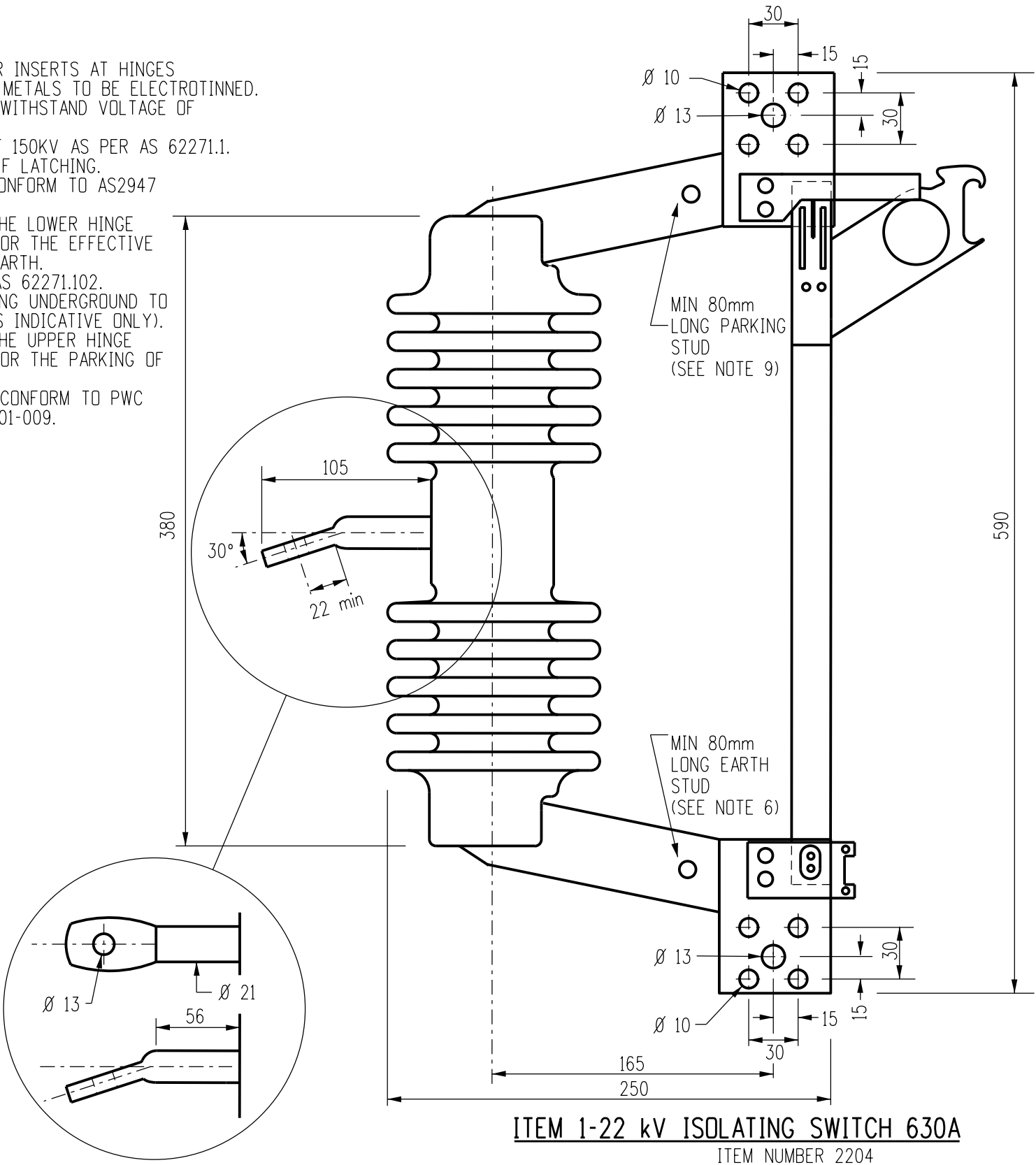
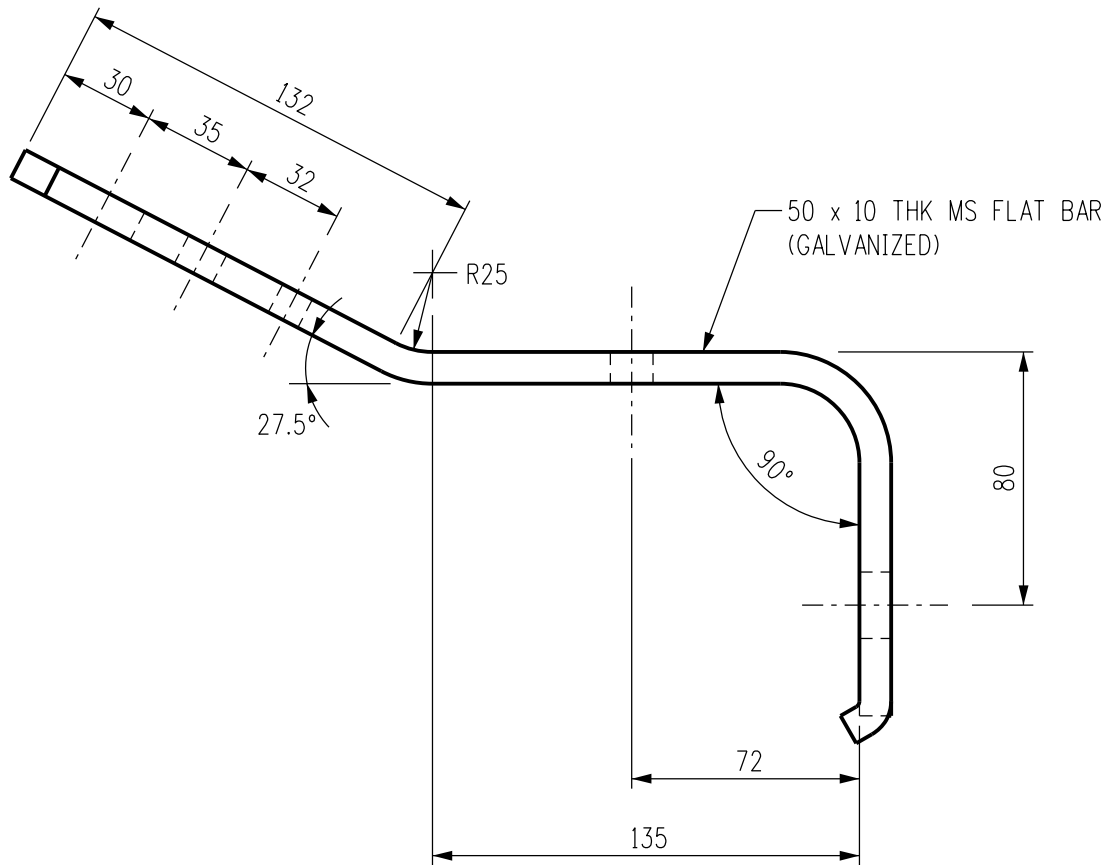


NOTES :

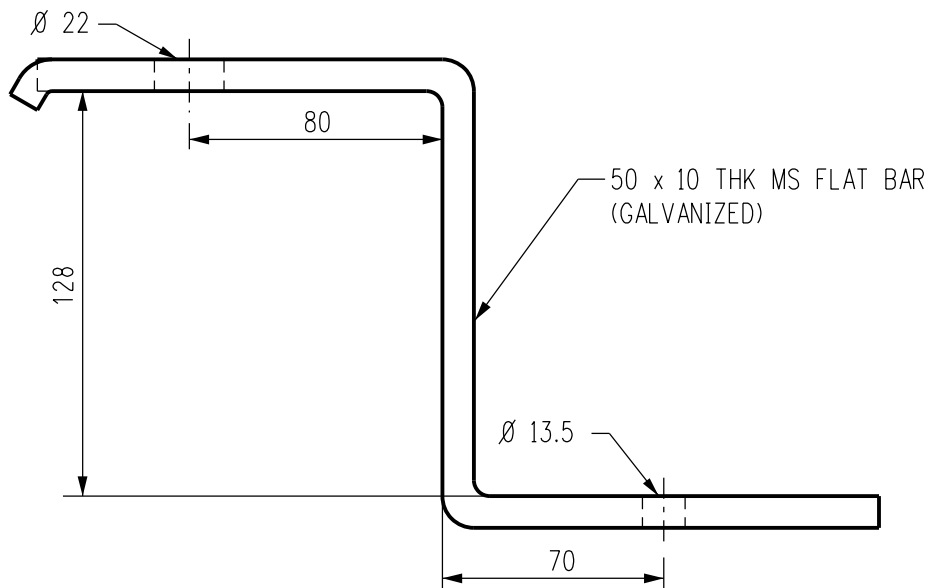
1. MATERIALS: BLADES - COPPER
CONTACTS - SILVER INSERTS AT HINGES
ALL NON- FERROUS METALS TO BE ELECTROTINNED.
2. ONE MINUTE POWER FREQUENCY WITHSTAND VOLTAGE OF 50KV AS PER AS 62271.1
3. IMPULSE WITHSTAND VOLTAGE OF 150KV AS PER AS 62271.1.
4. SWITCH TO BE SUPPLIED AS SELF LATCHING.
5. PORCELAIN INSULATORS SHALL CONFORM TO AS2947 PARTS 1 AND 2.
6. PROVISION IS TO BE MADE ON THE LOWER HINGE MOUNTING BRACKET TO ALLOW FOR THE EFFECTIVE ATTACHMENT OF A TEMPORARY EARTH.
7. SWITCHES MUST COMPLY WITH AS 62271.102.
8. ITEM 2 REQUIRED WHEN ISOLATING UNDERGROUND TO OVERHEAD SUPPLIES (DIMENSIONS INDICATIVE ONLY).
9. PROVISION IS TO BE MADE ON THE UPPER HINGE MOUNTING BRACKET TO ALLOW FOR THE PARKING OF LIVE LINE CLAMPS.
10. M.V. ISOLATING SWITCHES MUST CONFORM TO PWC STANDARD SPECIFICATION STSP 01-009.



ITEM 1-22 kV ISOLATING SWITCH 630A
ITEM NUMBER 2204


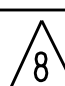


ITEM 2 - HORIZONTAL MOUNTING BRACKET (SEE NOTE 8)
ITEM NUMBER 291062



ITEM 3 - CROSSARM MOUNTING BRACKET

8	UPDATED NOTES 2 & 3, ADDED NOTE 10 & UPDATED TITLE	A.N.	SEP'20	C.C.C.	B.C.
7	TITLEBLOCK & DRAWING NUMBER FORMATTED	K.T.	DEC'18	C.C.	C.C.
6	NOTE 9 ADDED	C.C.	NOV'12	A.T.	B.C.
5	EARTH STUD POINTS ADDED	K.I.	SEP'05	C.C.	C.C.
4	REDRAWN ON MICROSTATION.	JL/SB	JUN'98	-	F.R.R.
3	SWITCH CHANGED TO 630 A. NOTES AMENDED.	N.S.	MAY'91	-	B.K.
2	NOTE 2 ALTERED TO REFER TO NEW CODE.	PMC	APR'91	-	-
1	STOCK CODE ADDED.	R.T.F.	SEP'89	-	-
NO	DESCRIPTION	DRN	DATE	CKD	APPD
AMENDMENTS					

<div> NORTHERN TERRITORY</div>	DES	...	POWER STANDARD DRAWING			
	DRN	R.L.F.	SWITCHGEAR ISOLATING SWITCH M.V.			
	CKD	-				
	APPD	B.T.KENT				
	SCALE	N.T.S.				
	ISSUED	APR'89	A3	DRAWING NUMBER	S01-01-06-07	
	ALL DIM. IN mm					
	DRAFTING STANDARD TO A.S.1100			CAD PRODUCT - DO NOT AMEND MANUALLY		AMD