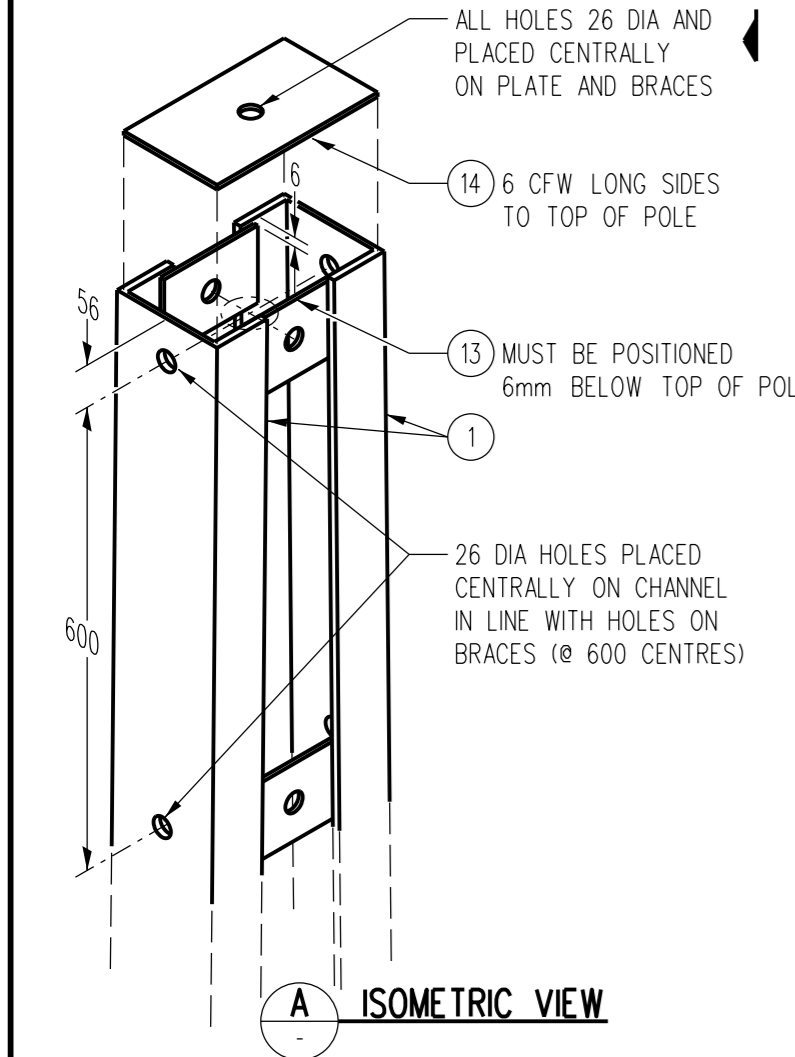


LINE POLE 18.5D - ITEM NUMBER : 299396
LINE POLE 18.5D HD GALVANISED - ITEM NUMBER : 501247

SCALE 1:50

SECTION B
1 : 10



ALL HOLES 26 DIA AND PLACED CENTRALLY ON PLATE AND BRACES

14 6 CFW LONG SIDES TO TOP OF POLE

13 MUST BE POSITIONED 6mm BELOW TOP OF POLE

26 DIA HOLES PLACED CENTRALLY ON CHANNEL IN LINE WITH HOLES ON BRACES (@ 600 CENTRES)

A ISOMETRIC VIEW

NOTES:

1. TOP PLATE AND BASE PLATE DO NOT FORM PART OF THE OVERALL DIMENSION.
2. BRACES AND GROUND PLATE TO BE WELDED ON INSIDE OF POLE AND TO HAVE 17mm MIN OVERLAP. ANTI-CLIMBING PLATE TO BE WELDED ON OUTSIDE OF POLE.
3. ALL WELDS TO BE 6mm FILLET CONTINUOUS WELD EXCEPT ANTI-CLIMBING PLATE WHICH IS TO HAVE 6mm FILLET 150mm LONG AT BOTH ENDS AND CENTRE.
4. ALL ROUGH OR BURRED EDGES ARE TO BE DRESSED CLEAN.
5. STEEL TO BE GRADE 300 PLUS, REFER TO BHP 1999 HOT ROLLED STRUCTURAL STEEL PRODUCTS.
6. PFC DIMENSIONS ARE TO AS 3679.
7. WELDING TO COMPLY WITH AS 1554.
8. TOLERANCES TO DIMENSIONS OVER 5m IS +/- 5mm.
9. EACH POLE IS TO BE ENGRAVED WITH THE SIZE, TARE WEIGHT, FABRICATORS NAME, AND MONTH AND YEAR OF FABRICATION.
10. ENGRAVING SHALL BE IN LETTERS NO LESS THAN 10mm HIGH AND 0.05mm DEEP AND POSITIONED ON THE FIRST GUSSET PLATE ABOVE GROUND LEVEL.

ITEM	QTY	DESCRIPTION	ITEM NUMBER
15	3	M12 x 40 GALVANISED BOLT
14	2	268 x 238 x 10 FMS, TOP PLATE
13	2	220 x 100 x 10 FMS, BRACES, 26 DIA HOLE
12	6	220 x 200 x 10 FMS, BRACES, 26 DIA HOLE
11	8	330 x 200 x 10 FMS, BRACES, 26 DIA HOLE
10	2	330 x 200 x 10 FMS, MID BRACES
9	10	430 x 200 x 10 FMS, MID BRACES
8	8	540 x 200 x 10 FMS, MID BRACES
7	2	650 x 1400 x 6 FMS, ANTI-CLIMBING PLATE
6	6	700 x 200 x 10 FMS, BRACES UNDER A/CL PLATE
5	2	750 x 500 x 10 FMS, GROUND PLATE
4	6	770 x 200 x 10 FMS, FOOTING BRACES
3	4	850 x 200 x 10 FMS, FOOTING BRACES
2	1	938 x 238 x 10 FMS, BASE PLATE
1	2	250 x 90 PFC, 18500 LONG

					DES M. BOCK DRN A. SCHMID CKD R. CLEOPAS APPD M. BOCK SCALE 1:50 ISSUED FEB '01 ALL DIM. IN mm DRAFTING STANDARD TO A.S.1100	POWER STANDARD DRAWING POLES LINE 18.5D BOLTED CONNECTIONS TYPE			A3 DRAWING NUMBER S01-01-01-15 CAD PRODUCT - DO NOT AMEND MANUALLY	 AMDT
NO	DESCRIPTION	DRN	DATE	CKD	APPD					
AMENDMENTS										
4	TITLEBLOCK & DRAWING NUMBER FORMATTED, GALVANISED ITEM ADDED	K.T.	DEC'18	C.C.	C.C.					
3	13Ø HOLES FOR PADLOCK ADDED	K.I.	OCT'05	C.C.	C.C.					
2	M12 x 40 LONG GALV. BOLTS ITEM 15 ADDED, ITEM 6 RAISED	A.S.	29.5.03	R.C.	M.B.					
1	STOCK CODE ADDED	A.S.	27.9.01	M.B.	F.R.R.					
0	ISSUED FOR CONSTRUCTION	A.S.	MAY'01	M.B.	F.R.R.					