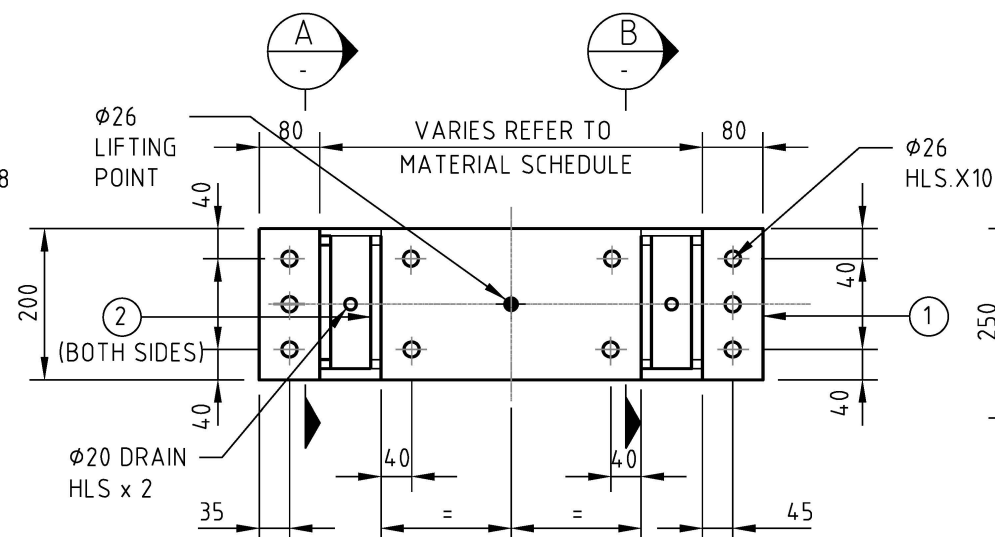


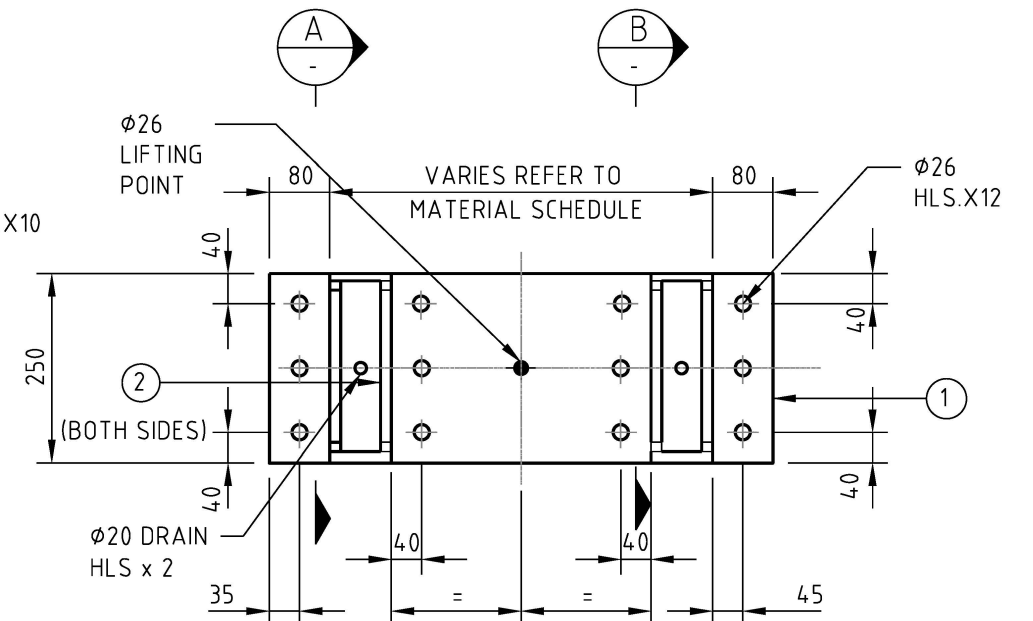
**TYPICAL SPLICE DETAIL - TOP SECTION ONLY FOR "B" POLES**

SCALE 1:10



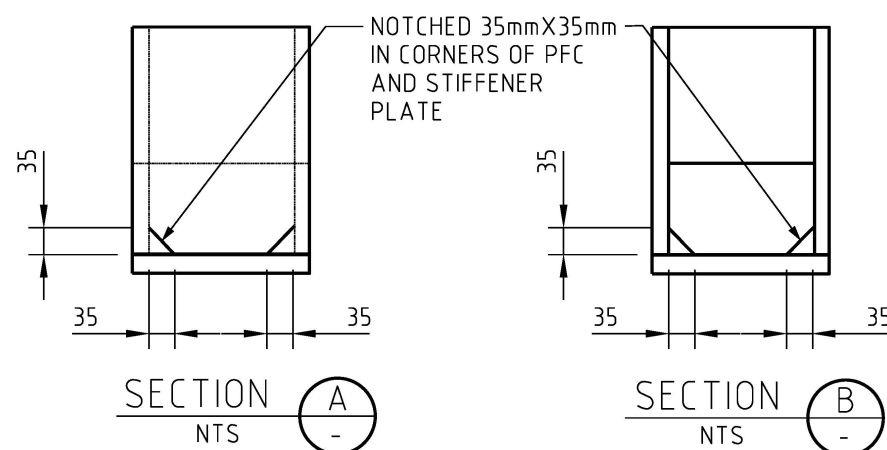
**TYPICAL SPLICE DETAIL - TOP SECTION ONLY FOR "C" POLES**

SCALE 1:10



**TYPICAL SPLICE DETAIL - TOP SECTION ONLY FOR "D" POLES**

SCALE 1:10




# NOTES

- REFER TO S01-02-01-69 FOR INSTALLATION DETAILS
- ALL WELDS TO BE 6mm FILLET CONTINUOUS.
- STEEL TO BE GRADE 300 PLUS
- WELDING TO COMPLY WITH AS 1554
- TOLERANCES TO DIMENSIONS OVER SM IS +/- 5mm
- POLES TO COMPLY WITH STSP 01-002
- FOR ALL THE POLES DETAIL REFER TO DRAWINGS S01-01-01-31 TO S01-01-01-36

ITEM REF.	QTY. 10.5 B	QTY. 10.5 C	QTY. 10.5 D	QTY. 12 B	QTY. 12 C	QTY. 12 D	QTY. 13.5 B	QTY. 13.5 C	QTY. 13.5 D	MATERIAL DESCRIPTION
1	2									602 x 150 x 25 FMS FLANGE PLATE
		2								602 x 200 x 25 FMS FLANGE PLATE
			2							624 x 250 x 25 FMS FLANGE PLATE
				2						609 x 150 x 25 FMS FLANGE PLATE
					2					609 x 200 x 25 FMS FLANGE PLATE
						2				637 x 250 x 25 FMS FLANGE PLATE
							2			617 x 150 x 25 FMS FLANGE PLATE
								2		617 x 200 x 25 FMS FLANGE PLATE
2	4			4			4			128 x 200 x 8 FMS STIFFENER PLATE
			4			4			4	218 x 200 x 8 FMS STIFFENER PLATE
		4			4			4		174 x 200 x 8 FMS STIFFENER PLATE

1	DIMENSIONS OF HOLE SPACINGS AMENDED.	J.R.	DEC'23	B.C.	B.V.
0	ISSUED FOR CONSTRUCTION	P.G.	FEB'23	S.M.	A.G.
NO	DESCRIPTION	DRN	DATE	CKD	APPD
AMENDMENTS					

**PowerWater**  
NORTHERN TERRITORY

DES	S.MACFARLANE	POWER STANDARD DRAWING			
DRN	E.MACARAIG	TWO PIECE SPLICED POLE SPLICE CONNECTION DETAIL BOLTED CONNECTIONS TYPE			
CKD	A.GOUVEIA				
APPD	-				
SCALE	AS NOTED				
ISSUED	DEC'22	A3	DRAWING NUMBER	S01-01-01-40	
ALL DIM. IN mm					
DRAFTING STANDARD TO A.S.1100			CAD PRODUCT - DO NOT AMEND MANUALLY		AMDT