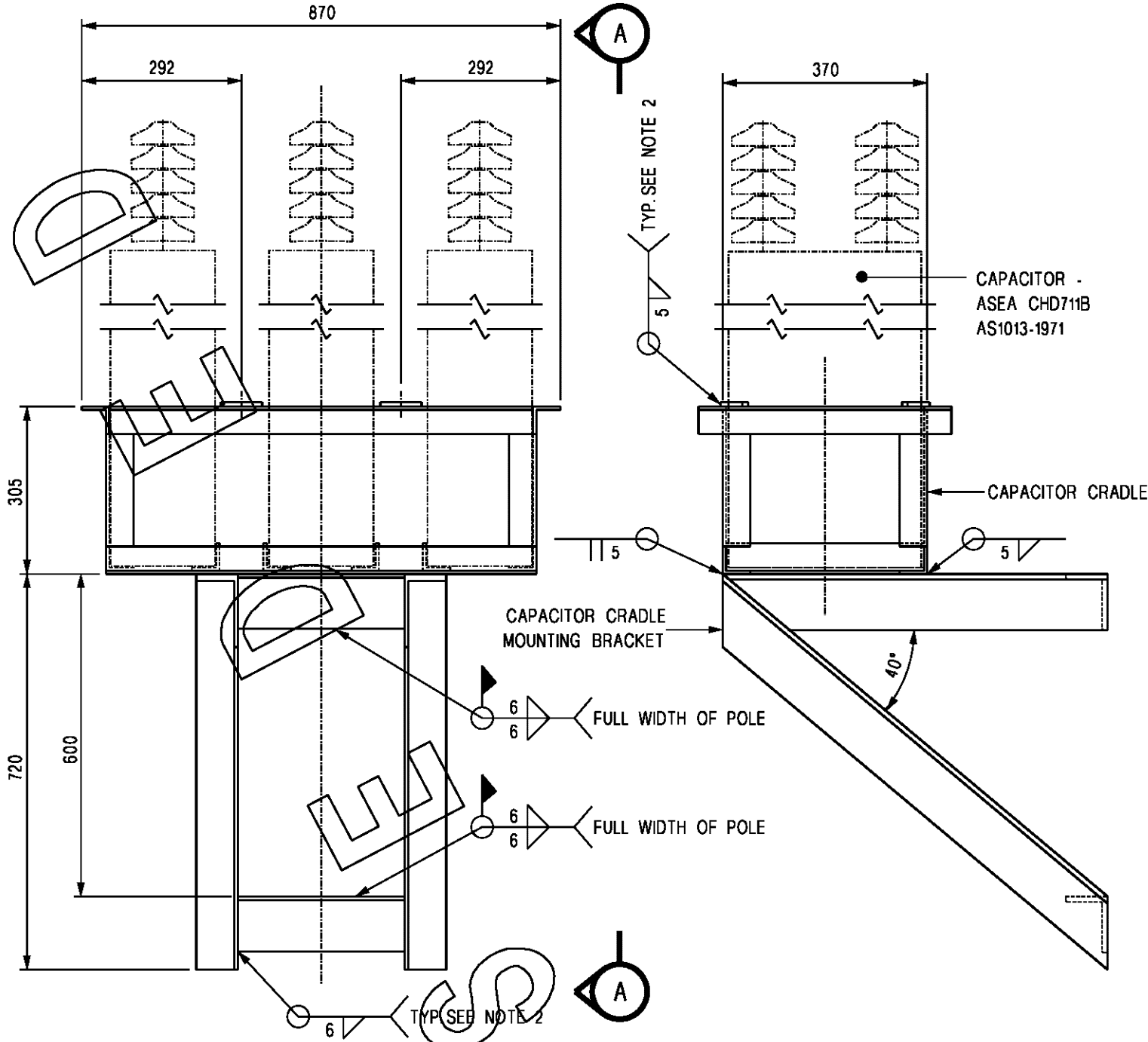


3RD ANGLE - DO NOT SCALE - REPORT ANY ERRORS, OMISSIONS TO DRAFTING OFFICE



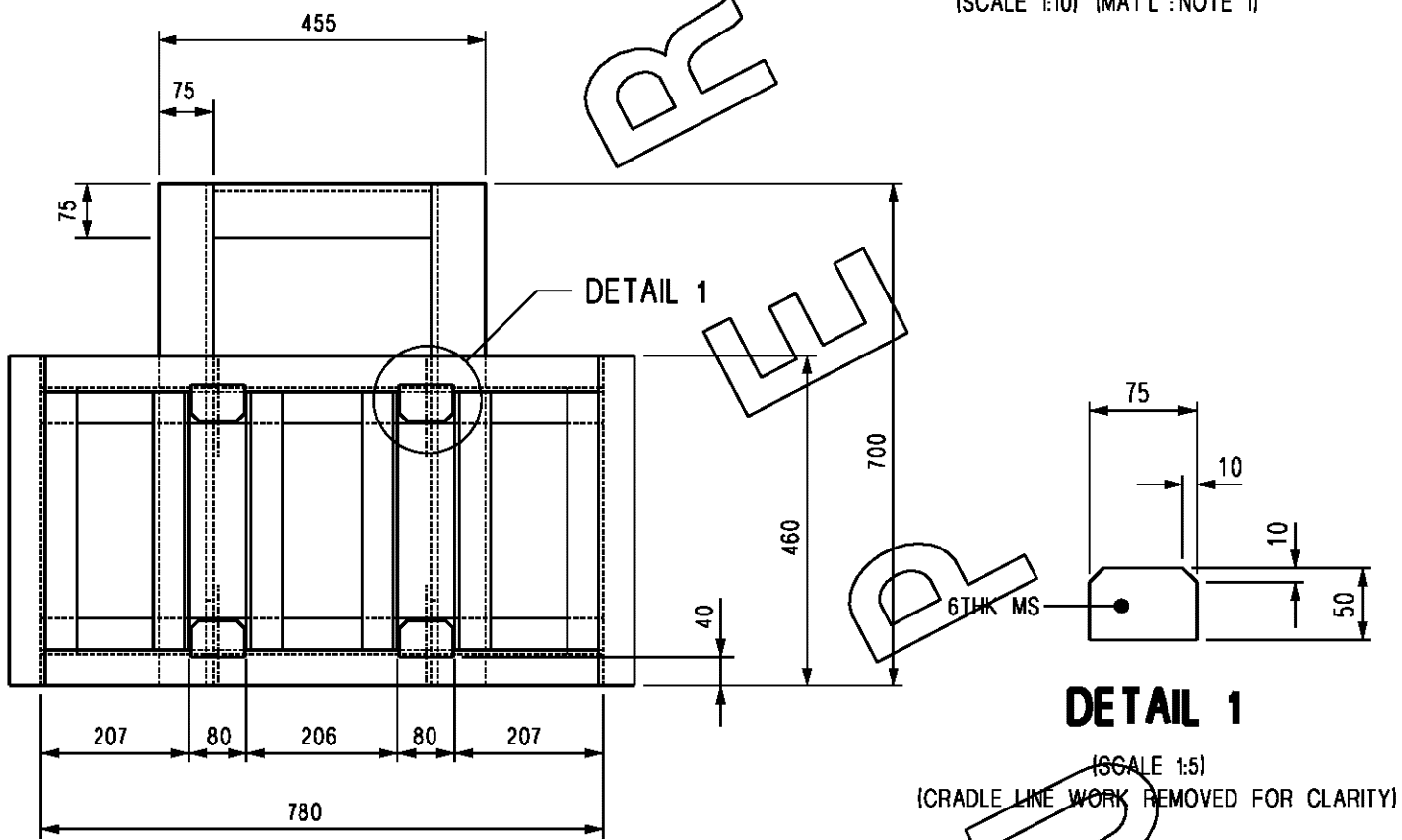
**ELEVATION**

(SCALE 1:10) (MAT'L : NOTE 1)

**VIEW**



(SCALE 1:10) (MAT'L : NOTE 1)



**PLAN**

(SCALE 1:10)  
(MAT'L : NOTE 1)

**GENERAL NOTES**

1. MATERIALS :-  
CAPACITOR CRADLE - TO BE MANUFACTURED FROM 50x50x5 EA AS3679.1-250  
MOUNTING BRACKET - TO BE MANUFACTURED FROM 100x75x6 UA AS3679.1-250
2. WELDING :- IN ACCORDANCE WITH AS1554  
CAPACITOR CRADLE - 5mm ALL ROUND CONTINUOUS FILLET OR BUTT WELDS  
MOUNTING BRACKET - 6mm ALL ROUND CONTINUOUS FILLET OR BUTT WELDS
3. REMOVE ALL BURRS AND SHARP EDGES.
4. ON COMPLETION OF FABRICATION, WHOLE CRADLE/MOUNTING BRACKET ASSEMBLY TO BE HOT DIP GALVANIZED IN ACCORDANCE WITH PAWA STANDARD SPECIFICATION STS029. FIELD WELDS TO BE POWER CLEANED TO AS1627.2, CLASS 2\* AND COATED WITH COLD GALVANIZING PAINT IN ACCORDANCE WITH MANUFACTURERS RECOMMENDATIONS.

POWER STANDARD DRAWING		DRAWING NUMBER S01-02-09-04	A3	ISSUED 08/96	ALL DIM. IN mm	DRAWING NUMBER S01-02-09-04	CAD PRODUCT - DO NOT AMEND MANUALLY
DES	...						
DRN	S. BONSER	11KV CAPACITORS 333KVAR POLE MOUNTED CRADLE STRUCTURE					
CKD	M. BOCK						
APPD	P. DEWAR						
SCALE	AS SHOWN						
DRAFTING STANDARD TO A.S. 1100							

**PowerWater**  
NORTHERN TERRITORY

AMENDMENTS		DRN	DATE	CKD	APPD
NO	DESCRIPTION	A.T.	DEC'12	B.C.	B.C.
1	SUPERSEDED				

