

BOLTED GUY DETAILS

REFER STD DWG. S01-01-04-40

TRANSFORMER HANGING ARM DETAIL

REFER STD DWG. S01-02-05-24

LV AND SERVICE ARM DETAIL

REFER STD DWG. S01-02-01-19

**EYE BOLT TO POLE
FOR CMEN**

REFER DWG. S01-02-01-27

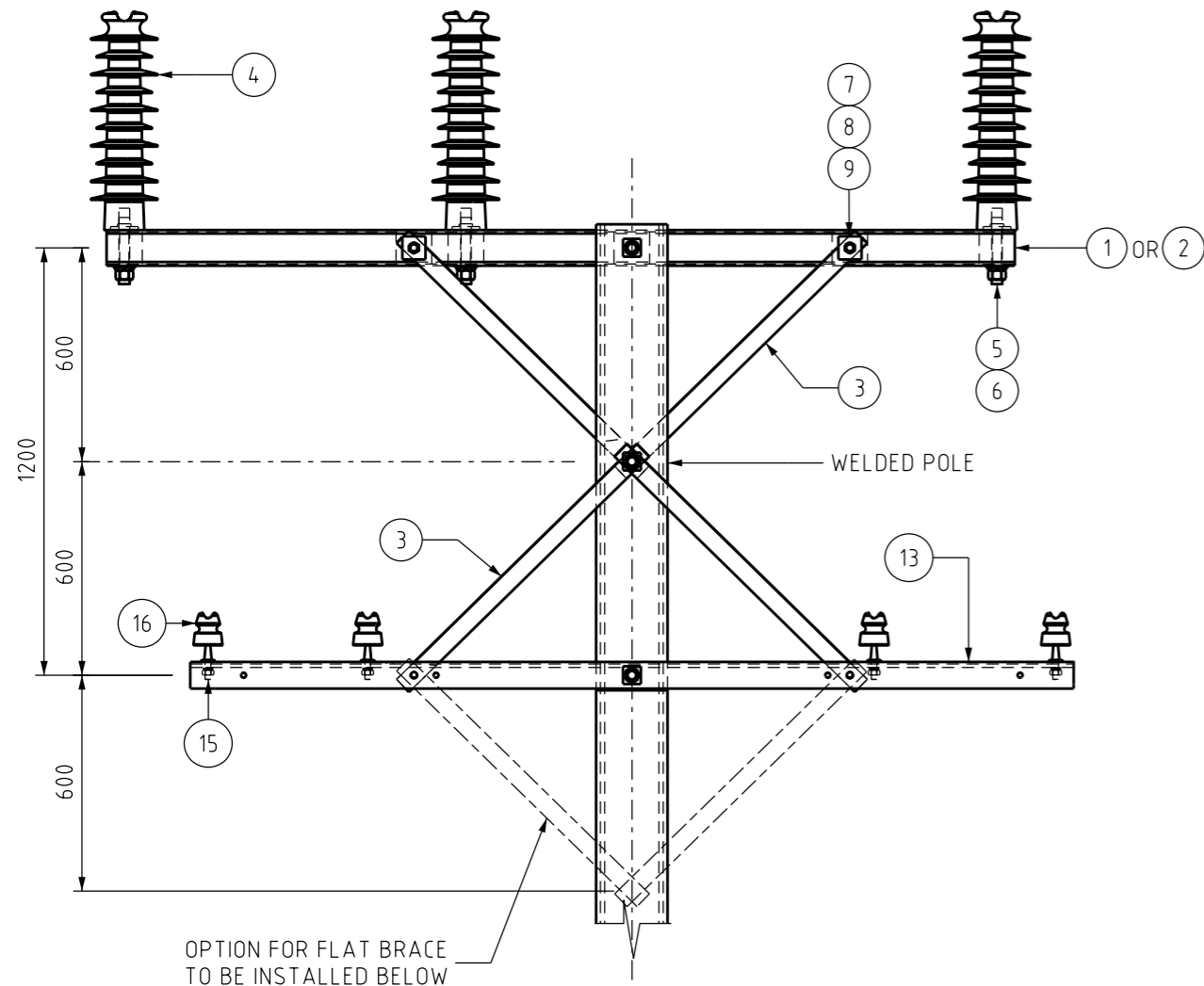
NOTES :

1. CONNECTIONS OF CROSSARMS AND FIXTURES TO EXISTING WELDED FABRICATED POLES ARE TO BE BOLTED UNLESS NOTED OTHERWISE.
2. DRILLED HOLES AND DIMENSIONS ARE TO SUIT BOLTED ITEMS AND CLEARANCES.
3. BOLT SIZES USED FOR BOLTING CROSSARMS AND FIXTURES TO POLES ARE TO BE M24 FOR CROSSARM TO POLE, M24 FOR BRACE TO POLE AND M16 FOR BRACE TO CROSSARM. ALL BOLTS AND NUTS ARE TO BE GALVANISED GRADE 4 EXCEPT FOR GUY ARRANGEMENTS, THESE ARE TO BE GRADE 8 HIGH TENSILE.
4. SPECIAL BOLTED ARRANGEMENTS WILL BE DETAILED AS REQUIRED, CONTACT STANDARDS.
5. EXISTING POLE BUTT WELDS TO BE GROUND FLAT BEFORE DRILLING AND MOUNTING CROSSARMS AND FIXTURES.
6. 26mm DIA. HOLES FOR CROSSARM TO POLE CONNECTIONS TO BE DRILLED INTO EXISTING WELDED POLES WITH MAGNETIC DRILL.
7. FOR INSTANCES WHERE THERE IS NO ACCESSIBLE DRILLING HOLE, WELDING OF A CROSS ARM MOUNTING BRACKET SHALL BE REQUIRED. REFER TO S01-01-04-06 ITEM 2.

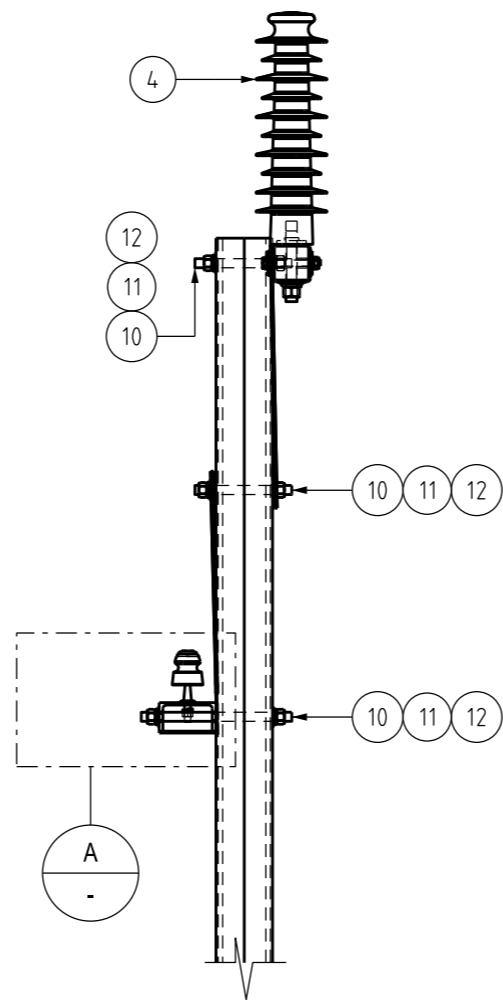
| NO | DESCRIPTION | DRN | DATE | CKD | APPD |
|-------------------|---|------|----------|------|------|
| 7 | ADD SHEET 2 & UPDATE LV & SERVICE ARM DESCRIPTION. UPDATE NOTE 7. | C.C. | APRIL'21 | B.V. | B.C. |
| 6 | REINSTATE DRAWING. ADD NOTE 7 AND ITEM NUMBERS. UPDATE DRAWING TITLE AND NOTE 1. FORMATTED DRAWING. | H.E. | JAN'21 | B.C. | H.E. |
| 5 | SUPERSEDED | A.T. | DEC'12 | B.C. | B.C. |
| AMENDMENTS | | | | | |



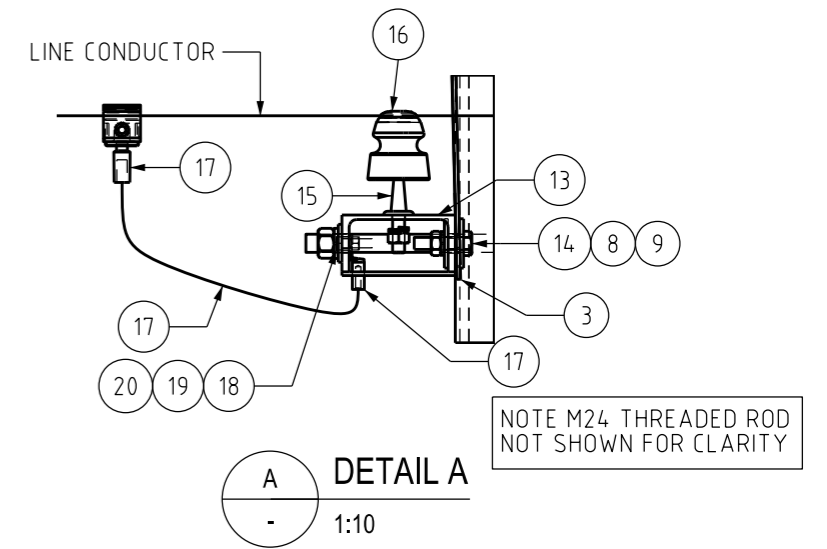
| DES | | POWER STANDARD DRAWING | |
|-------------------------------|--------------|-------------------------------------|----------------|
| DES | M. BOCK | ASSEMBLIES | |
| DRN | A. SCHMID | TYPICAL BOLTED ARRANGEMENTS | |
| CKD | J. GOLDSMITH | FOR CONNECTING TO WELDED POLES | |
| APPD | M. BOCK | MISCELLANEOUS SHEET 1 OF 2 | |
| SCALE | 1:20 | A3 | DRAWING NUMBER |
| ISSUED | OCT '2002 | | |
| ALL DIM. IN mm | | CAD PRODUCT - DO NOT AMEND MANUALLY | |
| DRAFTING STANDARD TO A.S.1100 | | AMDT | |



FRONT VIEW
1:20



SIDE VIEW
1:20



DETAIL A
1:10

NOTES:

- EXISTING POLE BUTT WELDS TO BE GROUND FLAT BEFORE DRILLING AND MOUNTING CROSSARMS AND FIXTURES.
- 26mm DIA. HOLES FOR CROSSARM TO POLE CONNECTIONS TO BE DRILLED INTO EXISTING WELDED POLES WITH MAGNETIC DRILL.
- POLE TOP CAN BE CONSTRUCTED IN ALL ARRANGEMENTS EXCEPT IF EXISTING POLE RISER HAS BEEN INSTALLED. LARGE FLAT WASHER ITEM 12 TO BE USED
- IF LV LINE ARM ITEM NUMBER :298562 IS USED BRACE MUST BE INSTALLED BELOW LV ARM.

| | | | | |
|------|-----|---|-------------|--------------|
| 1 | 1 | HV TERMINATION ARM 125X125X2580mm F/GLASS HV-T 26KN | 414398 | S01-01-02-10 |
| 2 | 1 | L/T OHR-B 100X100X2576MM OFFSET 9.7KN USE WITH EARTH RISERS | 501656 | |
| 3 | 4 | FLAT BRACE 50X5X945mm GAL. | 298687 | S01-01-04-38 |
| 4 | 3 | HV POLYMER POST TOP INSULATOR 22KV. | 300467 | S01-01-03-10 |
| 5 | 3 | HV INSULATOR STUD LONG 100mm LINE ARM 24mm DIA. | 300483 | S01-01-04-44 |
| 6 | 3 | HV STUD FOR TERMINATION ARM. 160/30MM 24mm DIA. | 500500 | S01-01-04-44 |
| 7 | 2 | M16 X 180mm BOLT AND NUT GAL | 114561 | S01-01-04-43 |
| 8 | 8 | 16mm FLAT WASHER GAL | 407060 | S01-01-04-43 |
| 9 | 4 | 16mm SPRING WASHER GAL | 114322 | S01-01-04-43 |
| 10 | 2 | 24mm THREADED ROD 1M LENGTH HIGH TENSILE GRADE 8.8. | 401393 | S01-01-04-43 |
| 11 | 3 | 24mm SPRING WASHER GAL | 114330 | S01-01-04-43 |
| 12 | 6 | M24 FLAT WASHER 50X50X 5mm GAL. SQUARE | 298828 | S01-02-02-43 |
| 13 | 1 | LV TERM 4 WIRE 150x75x2080mm | 500498 | S01-01-02-12 |
| 14 | 2 | M16 x 65mm BOLT AND NUT GAL | 114512 | S01-02-02-43 |
| 15 | 4 | LV INSULATOR PIN | 3251 | S01-01-04-01 |
| 16 | 4 | LV INSULATOR | 3277 | S01-01-03-01 |
| 17 | 1 | LV NEUTRAL BOND 500mm | 2147 | S01-01-04-17 |
| 18 | 1 | M12 X 50mm BOLT AND NUT GAL. | 502676 | S01-02-02-43 |
| 19 | 2 | 12mm flat washer | 400832 | S01-01-04-43 |
| 20 | 1 | 12mm SPRING WASHER | 239616 | S01-01-04-43 |
| ITEM | QTY | DESCRIPTION. | ITEM NUMBER | DWG NUMBER |

MATERIAL SCHEDULE

| NO | DESCRIPTION | DRN | DATE | CKD | APPD |
|------------|-------------------------|------|--------|------|------|
| 0 | ISSUED FOR CONSTRUCTION | C.C. | APR'21 | B.V. | B.C. |
| AMENDMENTS | | | | | |



| DES | | POWER STANDARD DRAWING | |
|-------------------------------|---------------|-------------------------------------|----------------|
| DES | A.BAKER | ASSEMBLIES | |
| DRN | C.COPPINS | TYPICAL BOLTED ARRANGEMENTS | |
| CKD | B.VANDERSTELT | FOR CONNECTING TO WELDED POLES | |
| APPD | B.CHEUNG | LV & HV CROSSARMS SHEET 2 OF 2 | |
| SCALE | AS SHOWN | A3 | DRAWING NUMBER |
| ISSUED | APRIL 2021 | | |
| ALL DIM. | IN mm | CAD PRODUCT - DO NOT AMEND MANUALLY | |
| DRAFTING STANDARD TO A.S.1100 | | AMDT | |