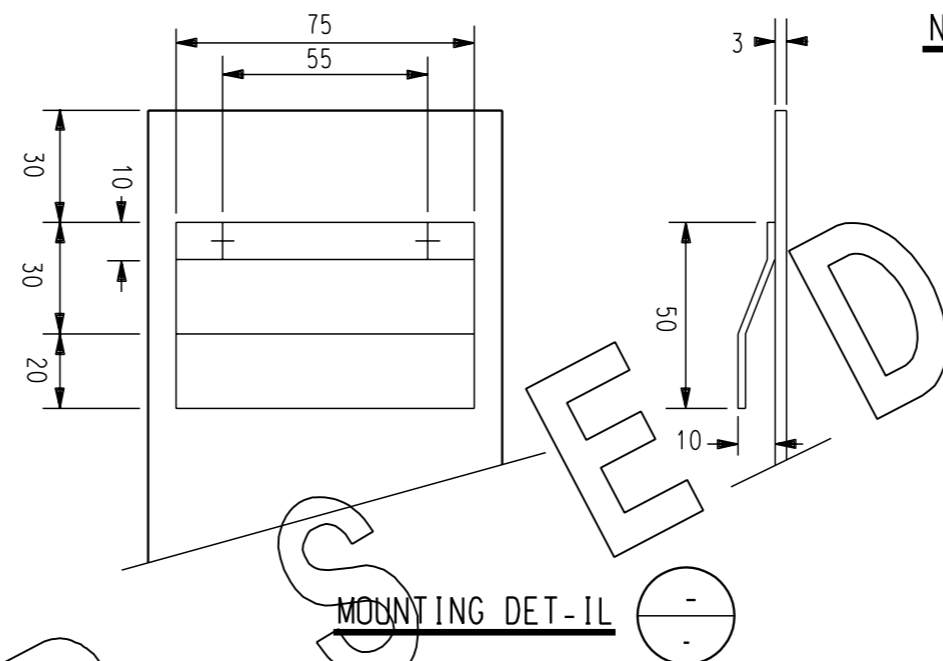
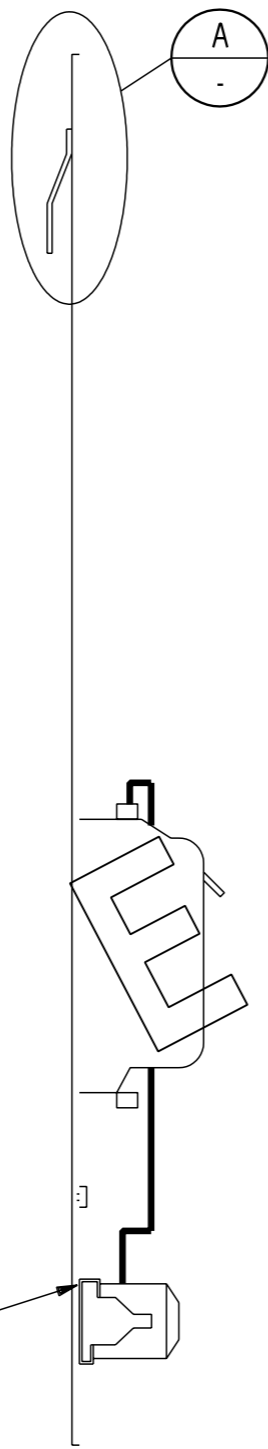


P



NOTES :

R


MOUNTING DET-IL


TO BE RE-D IN CONJUNCTION WITH S3-1-5-7 WIRING DI-GR-M

15	1 m	CABLE Cu 2.5 sq.mm PVC RED	19943	-
14	1	MOUNTING BRACKET	-	-
13	1	UTILUX RAIL	6536	-
12	2	UTILUX END CLAMP	7278	-
11	2	UTILUX BRIDGE BAR	-	-
10	1	UTILUX PHASE BARRIER	7393	-
9	6	UTILUX TERMINAL BLOCK	7229	-
8	1	UTILUX END PLATE	7252	-
7	1	HEINEMANN C/BREAKER CF TYPE 10A(SEE NOTE 2)	8482	-
6	2	STAINLESS STEEL 5 mm NUTS	-	-
5	1	STAINLESS STEEL 5 mm BOLT	-	-
4	1	STAINLESS STEEL 5 mm SPLIT WASHER	-	-
3	1	STAINLESS STEEL 5 mm WASHER	-	-
2	1	STAINLESS STEEL 5 mm 'STANKO' LUG	-	-
1	1	ALUMINIUM BASE PLATE 560mm X 85mm X 3mm	-	-
TAG No	QTY	DESCRIPTION	STOCK CODE	DRG REF

MATERIAL SCHEDULE

ITEM 1 - SWITCH P-CK LIGHTING COLUMN (INTEGR-L) (S/C 6890)

1	REDRAWN ON C.A.D. DIMENSIONS AND PARTS LIST AMENDED. WARNING NOTICE ADDED.	J.A.L.	S.C.M.	P.J.D.	MAY'95	 <p>POWER AND WATER AUTHORITY</p> <p>NORTHERN TERRITORY</p>
No.	AMENDMENT	DRN	CKD	-PPD	D-TE	

DES	G.S.	N.T. STANDARD DRAWING			
DRN	H.T.				
CKD	G.S./gmck	CONTROL D-T-SWITCH P-CK LIGHTING COLUMNS INTEGR-L - SINGLE PH-SE			
APPD	B.KENT				
SCALE	N.T.S.				
ISSUED	NOV'88	A3	DRAWING NUMBER	S03-01-05-06	
ALL DIM. IN	mm				
DRAFTING STANDARD TO AS 1100		CAD PRODUCT - DO NOT AMEND MANUALLY		AMDT	