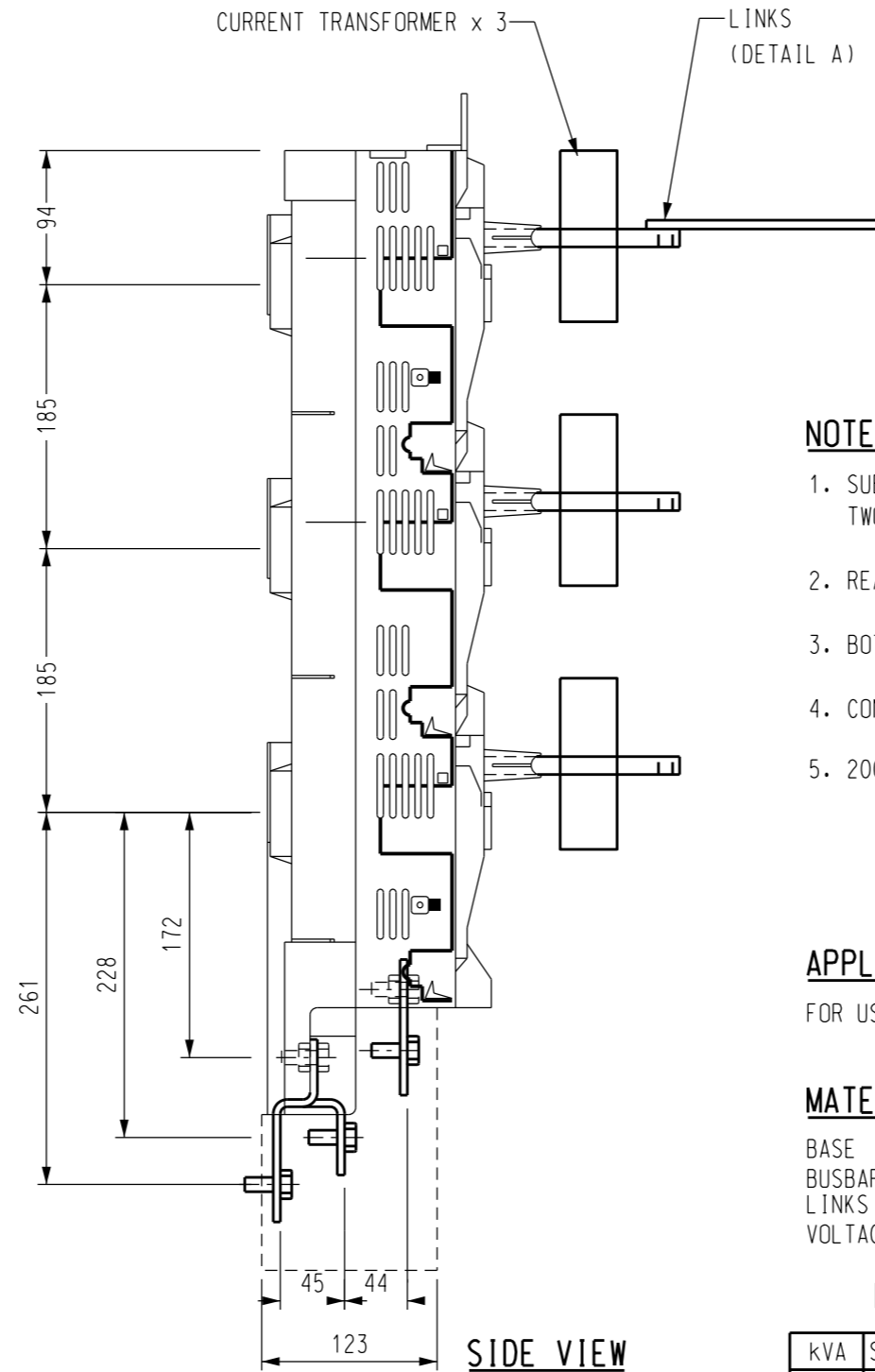


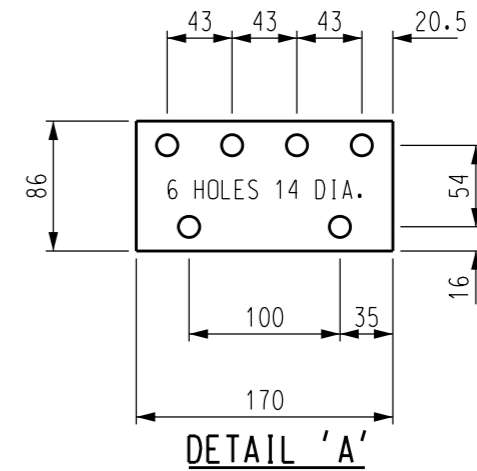
FRONT VIEW

2000A DISCONNECTOR

ITEM NO. 406811



SIDE VIEW



DETAIL 'A'

NOTES

1. SUBSTATIONS WITH CAPACITY 750kVA AND ABOVE SHALL BE PRE FITTED WITH TWO LINKS INSTEAD OF ONE (DETAIL A).
2. REAR CONNECTIONS SHOULD BE BRIDGED ON 2000A UNIT.
3. BOTTOM GENERATOR CONNECTOR MUST BE COVERED AND PROVIDED WITH A WARNING 'LIVE BUSBARS'.
4. CONTACT COVER BENEATH HANDLES TO BE RED INSTEAD OF NORMAL YELLOW COLOUR.
5. 2000A DISCONNECTOR TO BE USED IN SUBSTATIONS RATED 750kVA OR LARGER

APPLICATION

FOR USE IN PACKAGE AND KIOSK SUBSTATIONS

MATERIAL

BASE : MOULDED PLASTIC
 BUSBAR : TINNED COPPER
 LINKS : TINNED COPPER
 VOLTAGE : 500V

LV CABLE FLEXIBLE

kVA	SIZE (mm ²)	MIN. RUNS PER PHASE
750	300	3
1000	400	3

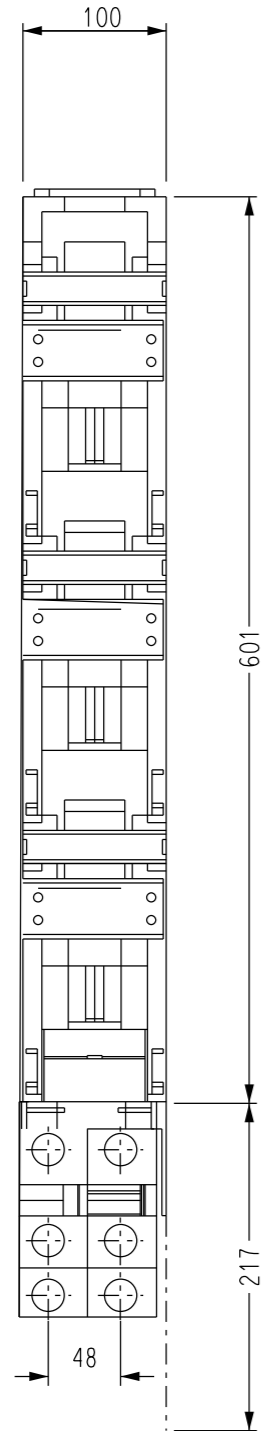
**DISCONNECTOR
ITEM NUMBER**

2000A	406811
-------	--------

NO	DESCRIPTION	DRN	DATE	CKD	APPD
7	FRONT AND SIDE VIEW LABEL ADDED, TITLE CENTRED, MATERIAL AND NOTES	R. A.	NOV'20	B. V.	B. C.
6	TITLEBLOCK & DRAWING NUMBER FORMATTED	K. T.	FEB'19	C. C.	C. C.
5	1000 A UNIT ADDED (SHEET2)	J. C.	NOV'07	B. C.	B. C.
4	NOTES 2-4 ADDED. DETAIL A AMENDED.	A. S.	APR'07	R. S.	S. C.
3	NEW DETAIL ADDED	K. I.	JAN'07	R. S.	B. C.
2	STCK CODES ADDED	K. I.	SEP'06	R. S.	B. C.
1	CABLE SIZE AMENDED	Raj	Aug'06	Raj	B. C.

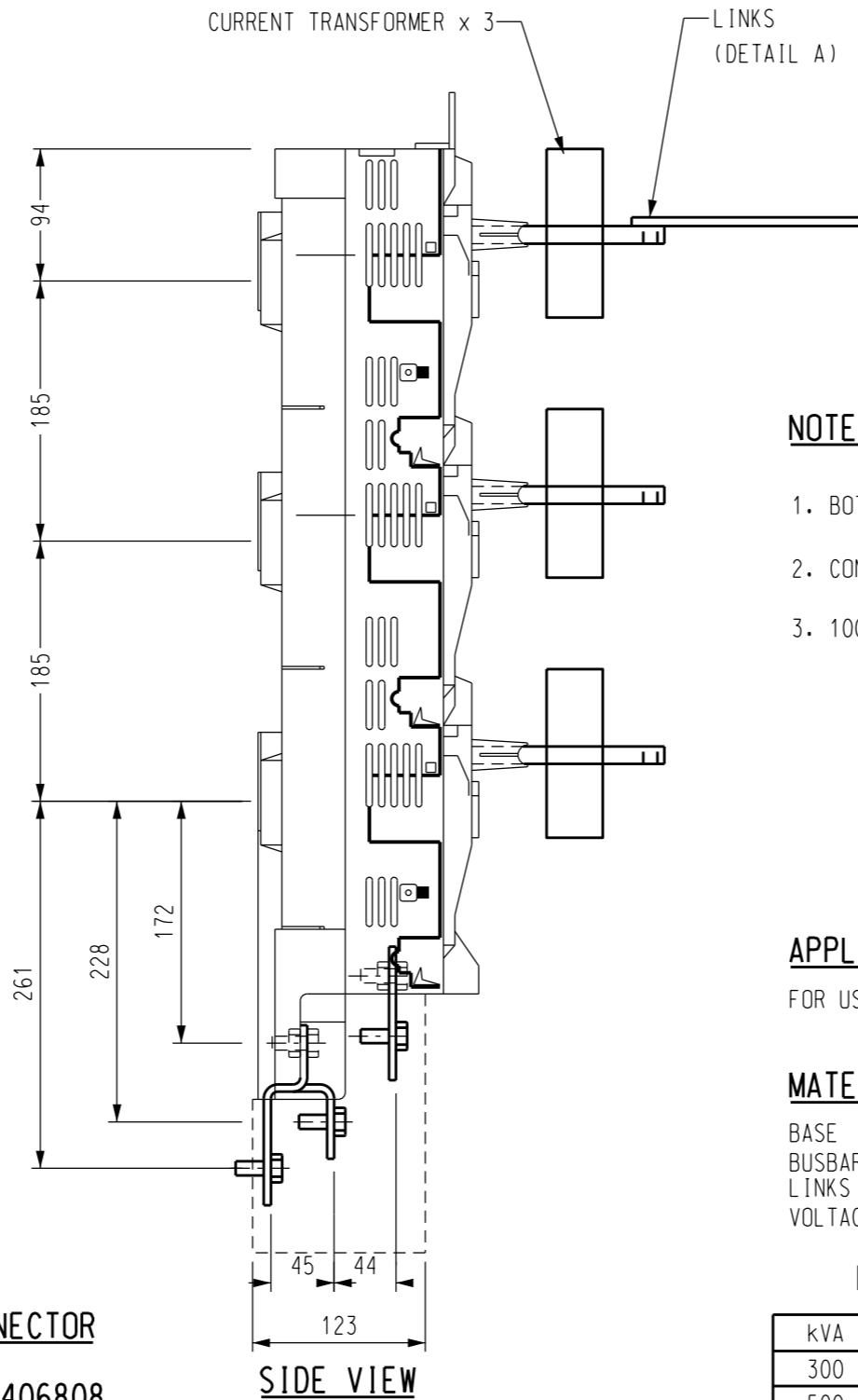


DES	C. CAMILLERI	POWER STANDARD DRAWING	
DRN	A. SCHMID	DISCONNECTOR BASE 500V, 1000 - 2000A DISCONNECTOR SHEET 1 OF 2	
CKD	C. CAMILLERI		
APPD	.	A3	DRAWING NUMBER S02-01-04-17_1
SCALE	1 : 5		
ISSUED	JAN'06	DRAFTING STANDARD TO A.S.1100	
ALL DIM. IN mm			
CAD PRODUCT - DO NOT AMEND MANUALLY		AMDT	

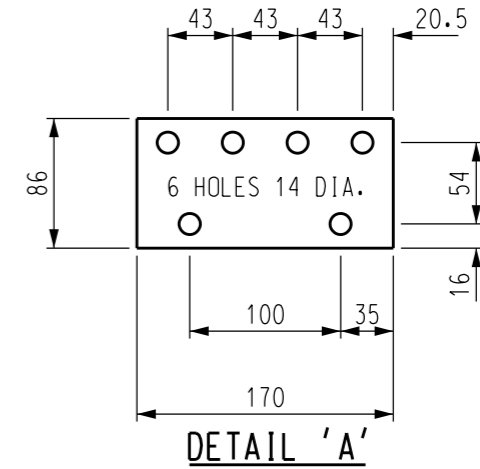


FRONT VIEW

1000A DISCONNECTOR
ITEM NUMBER 406808



SIDE VIEW



DETAIL 'A'

NOTES

1. BOTTOM GENERATOR CONNECTOR MUST BE COVERED ALONG WITH A WARNING SIGN.
2. CONTACT COVER BENEATH HANDLES TO BE RED INSTEAD OF NORMAL YELLOW COLOUR.
3. 1000A DISCONNECTOR TO BE USED IN SUBSTATIONS RATED 500KVA AND LOWER

APPLICATION

FOR USE IN PACKAGE AND KIOSK SUBSTATIONS

MATERIAL

BASE : MOULDED PLASTIC
 BUSBAR : TINNED COPPER
 LINKS : TINNED COPPER
 VOLTAGE : 500V

LV CABLE FLEXIBLE

kVA	SIZE (mm ²)	MIN. RUNS PER PHASE
300	120	2
500	300	2

STOCK CODE

1000A	406808
-------	--------

NO	DESCRIPTION	DRN	DATE	CKD	APPD
7	FRONT AND SIDE VIEW LABEL ADDED, TITLE CENTRED, MATERIAL AND NOTES	R.A.	NOV'20	B.V.	B.C.
6	TITLEBLOCK & DRAWING NUMBER FORMATTED	C.C.C.	OCT'19	M.Sc.	C.C.C.
5	1000 A UNIT ADDED (SHEET2)	J.C.	NOV'07	B.C.	B.C.
4	NOTES 2-4 ADDED. DETAIL A AMENDED.	A.S.	APR'07	R.S.	s.c.
3	NEW DETAIL ADDED	K.I.	JAN'07	R.S.	B.C.
2	STCK CODES ADDED	K.I.	SEP'06	R.S.	B.C.
1	CABLE SIZE AMENDED	Raj	Aug'06	Raj	B.C.



DES	C. CAMILLERI	POWER STANDARD DRAWING	
DRN	A. SCHMID	DISCONNECTOR BASE 500V, 1000 - 2000A DISCONNECTOR SHEET 2 OF 2	
CKD	C. CAMILLERI		
APPD	.	A3	DRAWING NUMBER S02-01-04-17_2
SCALE	1 : 5		
ISSUED	JAN'06	DRAFTING STANDARD TO A.S.1100	
ALL DIM. IN mm			
CAD PRODUCT - DO NOT AMEND MANUALLY		AMDT	